

REFERENCE PLAN TO ACCOMPANY RESOLUTION OF THE COUNCIL OF CITY OF VANCOUVER ESTABLISHING FOR HIGHWAY PURPOSES A PORTION OF LOT A, EXCEPT THE SOUTH 32.8 FEET NOW ROAD, BLOCK 82, DISTRICT LOT 264A, PLAN 9614, GROUP ONE, NEW WESTMINSTER DISTRICT.

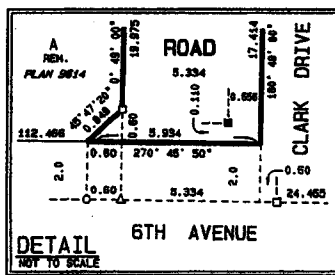
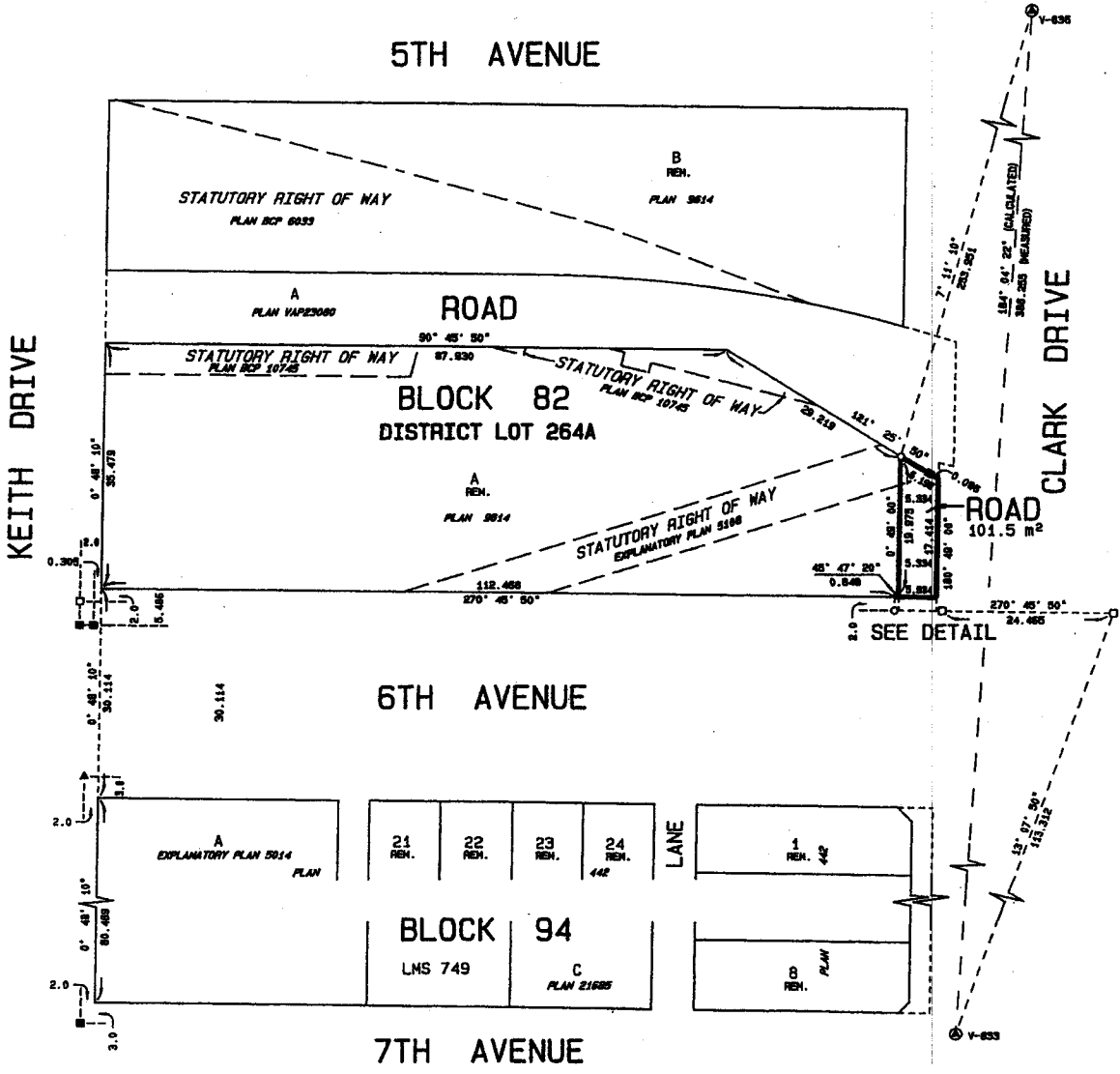
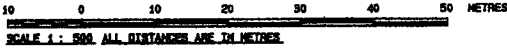
PLAN BCP

DEPOSITED IN THE LAND TITLE OFFICE AT NEW WESTMINSTER, BRITISH COLUMBIA, THIS DAY OF 2004.

REGISTRAR.

REFERENCE NO.

PURSUANT TO SECTION 99(1) (f), LAND TITLE ACT B.C.S. 929.025



- LEGEND: THIS PLAN SHOWS HORIZONTAL GROUND-LEVEL DISTANCES EXCEPT WHERE OTHERWISE NOTED. TO COMPUTE GRID DISTANCES, MULTIPLY GROUND-LEVEL DISTANCES BY COMBINED FACTOR 0.9999002. GRID BEARINGS ARE DERIVED FROM OBSERVATIONS BETWEEN GEODETIC CONTROL MONUMENTS V-836 AND V-833, INTEGRATED SURVEY AREA No. 31, CITY OF VANCOUVER, MAGDS (C396).

I, FRED L. WONG, A BRITISH COLUMBIA LAND SURVEYOR, OF THE CITY OF VANCOUVER, IN BRITISH COLUMBIA, CERTIFY THAT I WAS PRESENT AT AND PERSONALLY SUPERINTENDED THE SURVEY REPRESENTED BY THIS PLAN, AND THAT THE SURVEY AND PLAN ARE CORRECT. THE FIELD SURVEY WAS COMPLETED ON THE 18th DAY OF NOVEMBER, 2004. THE PLAN WAS COMPLETED AND CHECKED, AND THE CHECKLIST FILED UNDER No. 24044, ON THE 19th DAY OF NOVEMBER, 2004.

Signature of Fred Wong and B. C. L. S.