

REFERENCE PLAN TO ACCOMPANY RESOLUTION OF THE COUNCIL OF CITY OF VANCOUVER ESTABLISHING FOR HIGHWAY PURPOSES A PORTION OF LOTS 1 AND 2, EXCEPT: THE WEST 10 FEET NOW LANE, AND PART IN PLAN 4094; ALL OF BLOCK 94, DISTRICT LOT 264A, PLANS 442 AND 1771, GROUP ONE, NEW WESTMINSTER DISTRICT.

PLAN BCP

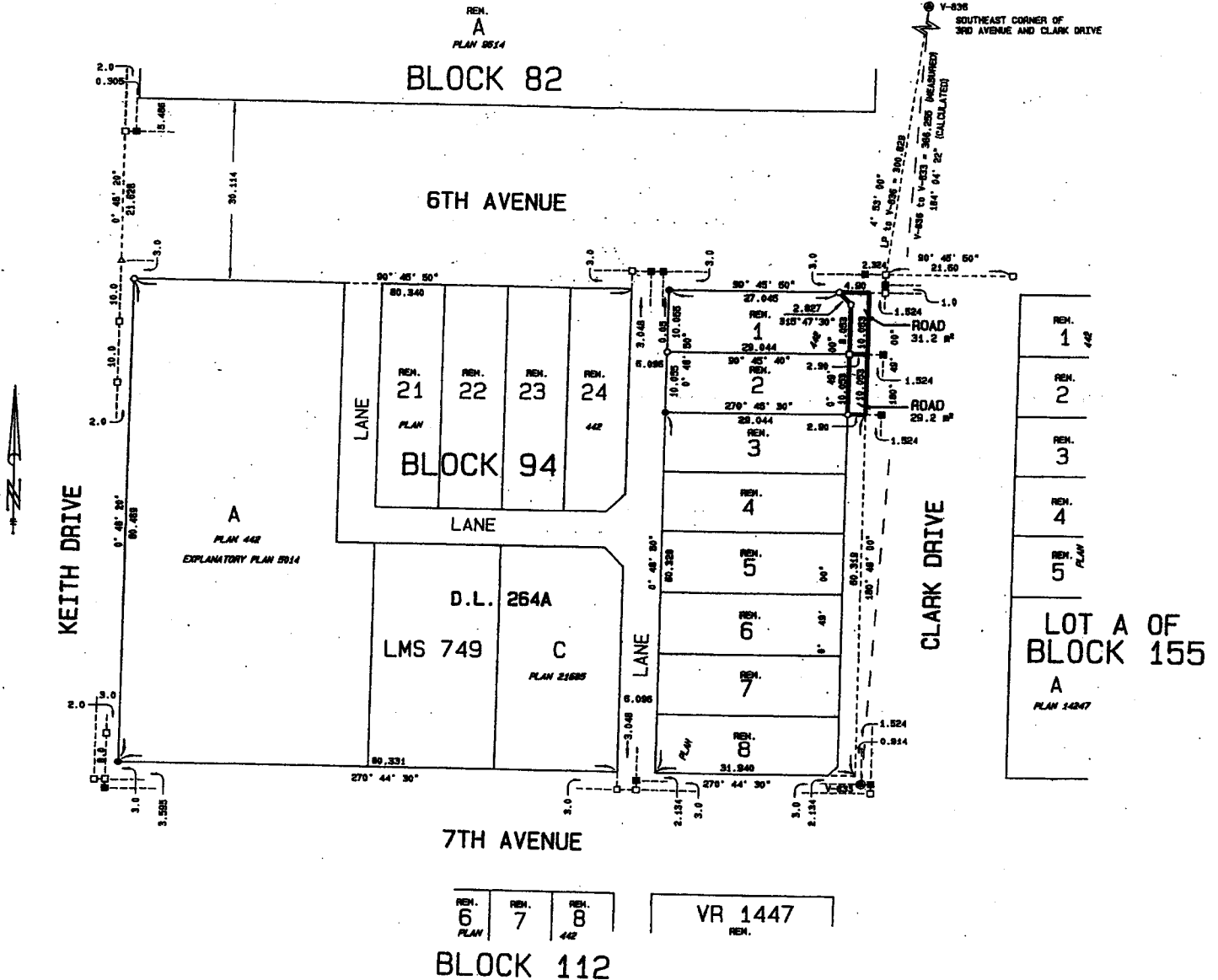
DEPOSITED IN THE LAND TITLE OFFICE AT NEW WESTMINSTER, BRITISH COLUMBIA, THIS DAY OF 2004.

REGISTRAR.

REFERENCE NO.

PURSUANT TO SECTION 99(1) (f), LAND TITLE ACT B.C.S.S. 926.025

10 0 10 20 30 40 50 METRES SCALE 1 : 500. ALL DISTANCES ARE IN METRES.



LEGEND:

- THIS PLAN SHOWS HORIZONTAL GROUND-LEVEL DISTANCES EXCEPT WHERE OTHERWISE NOTED. TO COMPUTE GRID DISTANCES, MULTIPLY GROUND-LEVEL DISTANCES BY CORRECTION FACTOR 0.9999008. GRID BEARINGS ARE DERIVED FROM OBSERVATIONS BETWEEN MAGNETIC CONTROL MONUMENTS Y-835 AND Y-833, INTEGRATED SURVEY AREA NO. 31, CITY OF VANCOUVER, NADES (CORS).
● INDICATES CONTROL MONUMENT FOUND
■ INDICATES LEAD PLUS FOUND
□ INDICATES LEAD PLUS PLACED
○ INDICATES STANDARD IRON POST FOUND
◊ INDICATES STANDARD IRON POST PLACED
△ INDICATES TRAVERSE HUB PLACED
m² INDICATES SQUARE METRES

I, FRED L. MORG, A BRITISH COLUMBIA LAND SURVEYOR, OF THE CITY OF VANCOUVER, IN BRITISH COLUMBIA, CERTIFY THAT I WAS PRESENT AT AND PERSONALLY SUPERINTENDED THE SURVEY REPRESENTED BY THIS PLAN, AND THAT THE SURVEY AND PLAN ARE CORRECT. THE FIELD SURVEY WAS COMPLETED ON THE 17th DAY OF SEPTEMBER, 2004. THE PLAN WAS COMPLETED AND CHECKED, AND THE CHECKLIST FILED UNDER NO. 21151, ON THE 17th DAY OF SEPTEMBER, 2004.

Fred Morg

B. C. L. S. 12 418

CITY OF VANCOUVER 894-873-7331

THIS PLAN LIES WITHIN THE GREATER VANCOUVER REGIONAL DISTRICT.