

REFERENCE PLAN TO ACCOMPANY RESOLUTION OF THE COUNCIL OF CITY OF VANCOUVER ESTABLISHING FOR HIGHWAY PURPOSES A PORTION OF LOT 13; EXCEPT THE WEST 10 FEET NOW LANE, AND PART IN PLAN 4094; BLOCK 112, DISTRICT LOT 264A, PLANS 442 AND 1771, GROUP ONE, NEW WESTMINSTER DISTRICT.

PLAN BCP

DEPOSITED IN THE LAND TITLE OFFICE AT NEW WESTMINSTER, BRITISH COLUMBIA, THIS DAY OF SEPTEMBER, 2004.

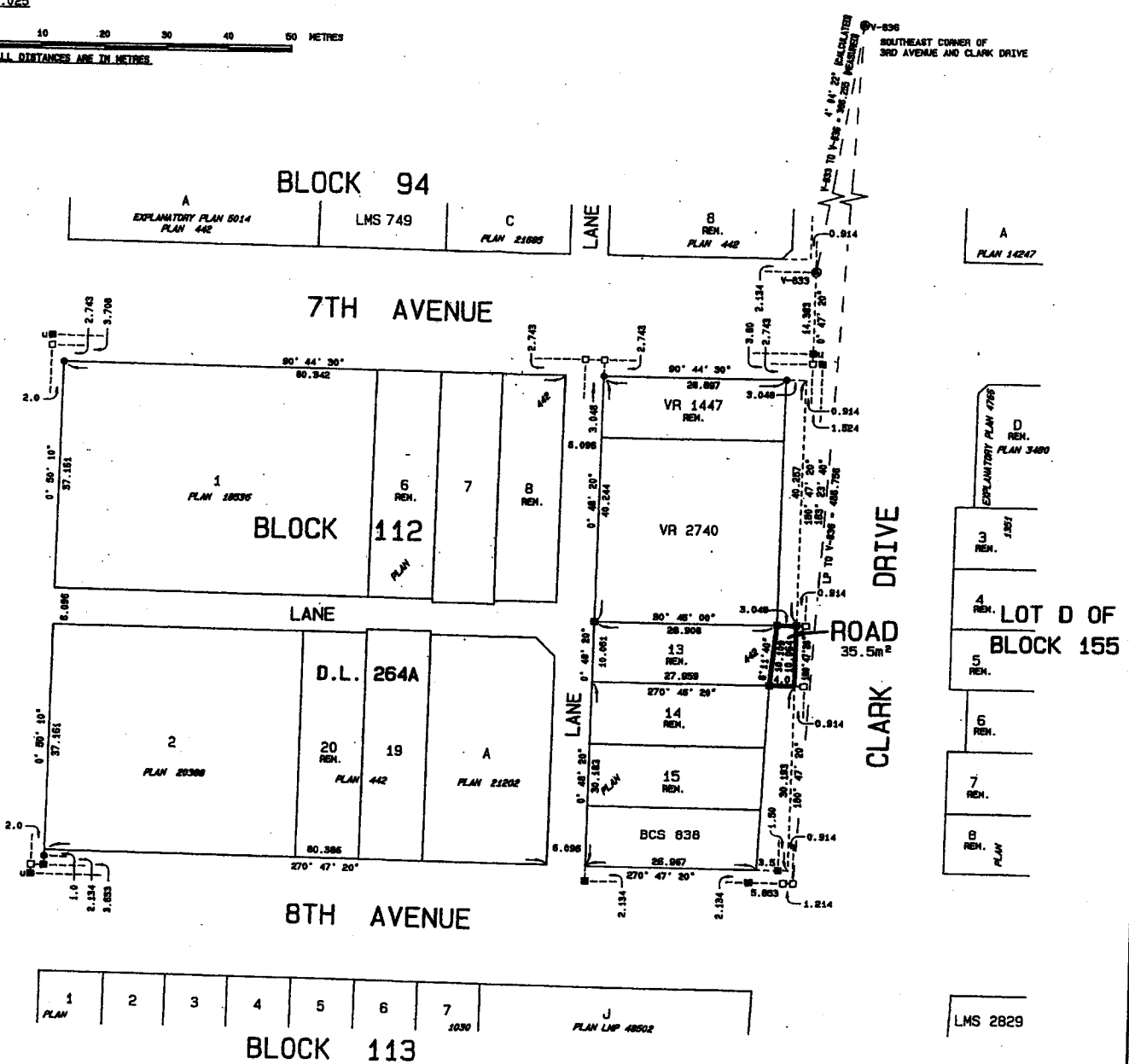
REGISTRAR.

REFERENCE NO.

PURSUANT TO SECTION 99(4) (f), LAND TITLE ACT B.C.S.S. 928.025



KEITH DRIVE



- LEGEND: THIS PLAN SHOWS HORIZONTAL GROUND-LEVEL DISTANCES EXCEPT WHERE OTHERWISE NOTED. TO COMPUTE GRID DISTANCES, MULTIPLY GROUND-LEVEL DISTANCES BY CORRECTION FACTOR 0.9999992. GRID BEARINGS ARE DERIVED FROM OBSERVATIONS BETWEEN GEODETIC CONTROL MONUMENTS V-833 AND V-836. INTEGRATED SURVEY AREA NO. 31, CITY OF VANCOUVER, NADES (CSRR).
- (circle with dot) INDICATES CONTROL MONUMENT FOUND
- (square with dot) INDICATES LEAD PLUM FOUND
- (square) INDICATES LEAD PLUM PLACED
- (circle with cross) INDICATES STANDARD IRON POST FOUND
- (circle) INDICATES STANDARD IRON POST PLACED
- (u) INDICATES UNREGISTERED
- (m^2) INDICATES SQUARE METRES

I, FRED L. HONG, A BRITISH COLUMBIA LAND SURVEYOR, OF THE CITY OF VANCOUVER, IN BRITISH COLUMBIA, CERTIFY THAT I WAS PRESENT AT AND PERSONALLY SUPERINTENDED THE SURVEY REPRESENTED BY THIS PLAN, AND THAT THE SURVEY AND PLAN ARE CORRECT. THE FIELD SURVEY WAS COMPLETED ON THE 27th DAY OF SEPTEMBER, 2004. THE PLAN WAS COMPLETED AND CHECKED, AND THE CHECKLIST FILED UNDER NO. 21575, ON THE 27th DAY OF SEPTEMBER, 2004.

Fred Hong

THIS PLAN LIES WITHIN THE GREATER VANCOUVER REGIONAL DISTRICT.

CITY OF VANCOUVER 604-673-7339

B. C. L. S. 154150