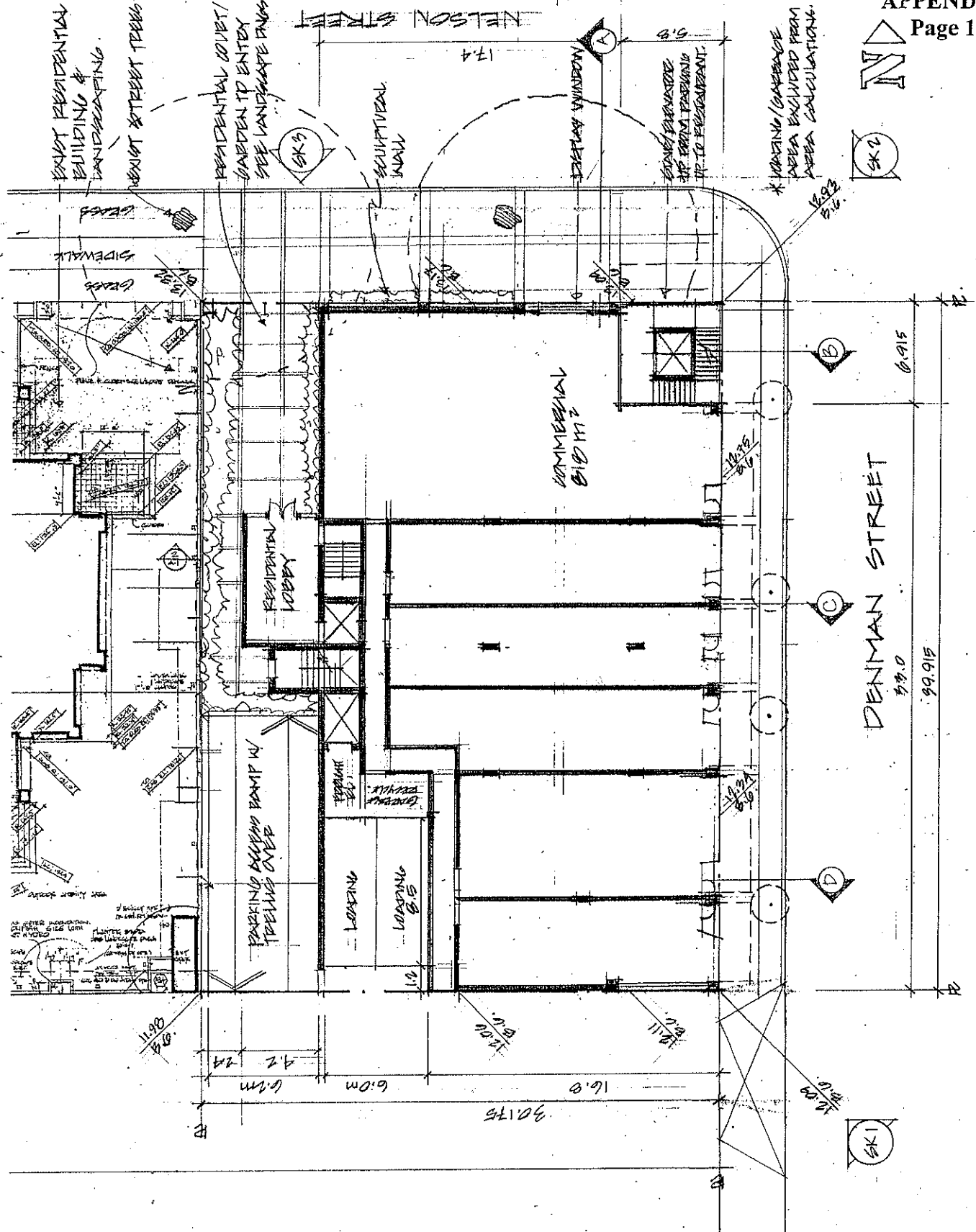


APPENDIX E  
 Page 1 of 11





Project:  
 1001-1015  
 Denman Street  
 Vancouver, B.C.

Drawing Title:  
 Second Floor  
 Plan

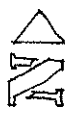
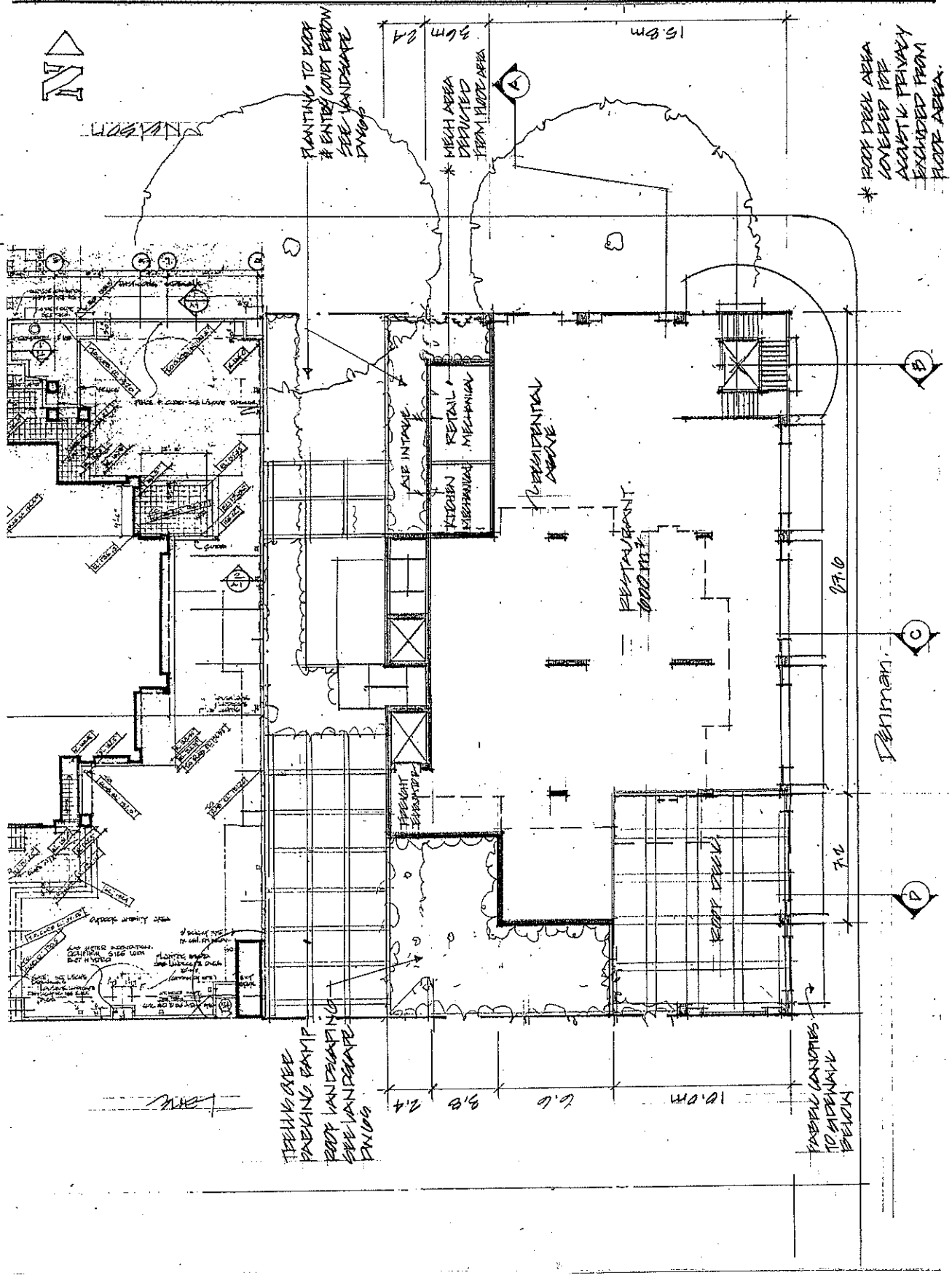
Drawing Number:  
 A33

Scale:  
 1:200

Drawn By:  
 RM

Checked:

0817



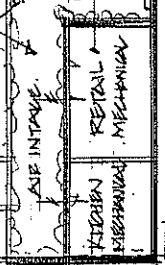
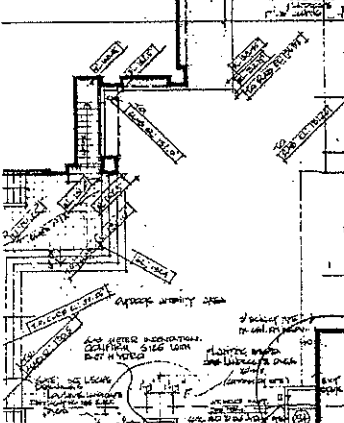
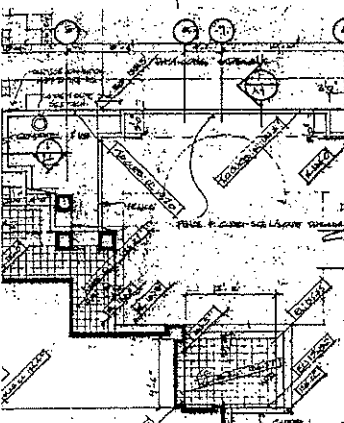
PLANTING TO ROOF  
 # ENTRY COURT BEYOND  
 SEE LANDSCAPE  
 DWG 08

\* MECH AREA  
 DEDUCTED  
 FROM FLOOR AREA

\* ROOF DECK AREA  
 COVERED FOR  
 ACUSTIC PRIVACY  
 EXCLUDED FROM  
 FLOOR AREA.

THINK OVER  
 PARKING RAMP  
 ROOF HANDICAPING  
 SEE LANDSCAPE  
 DWG 08

PARKING CANOPIES  
 TO BE INSTALLED  
 BELOW



RESTAURANT ROOM

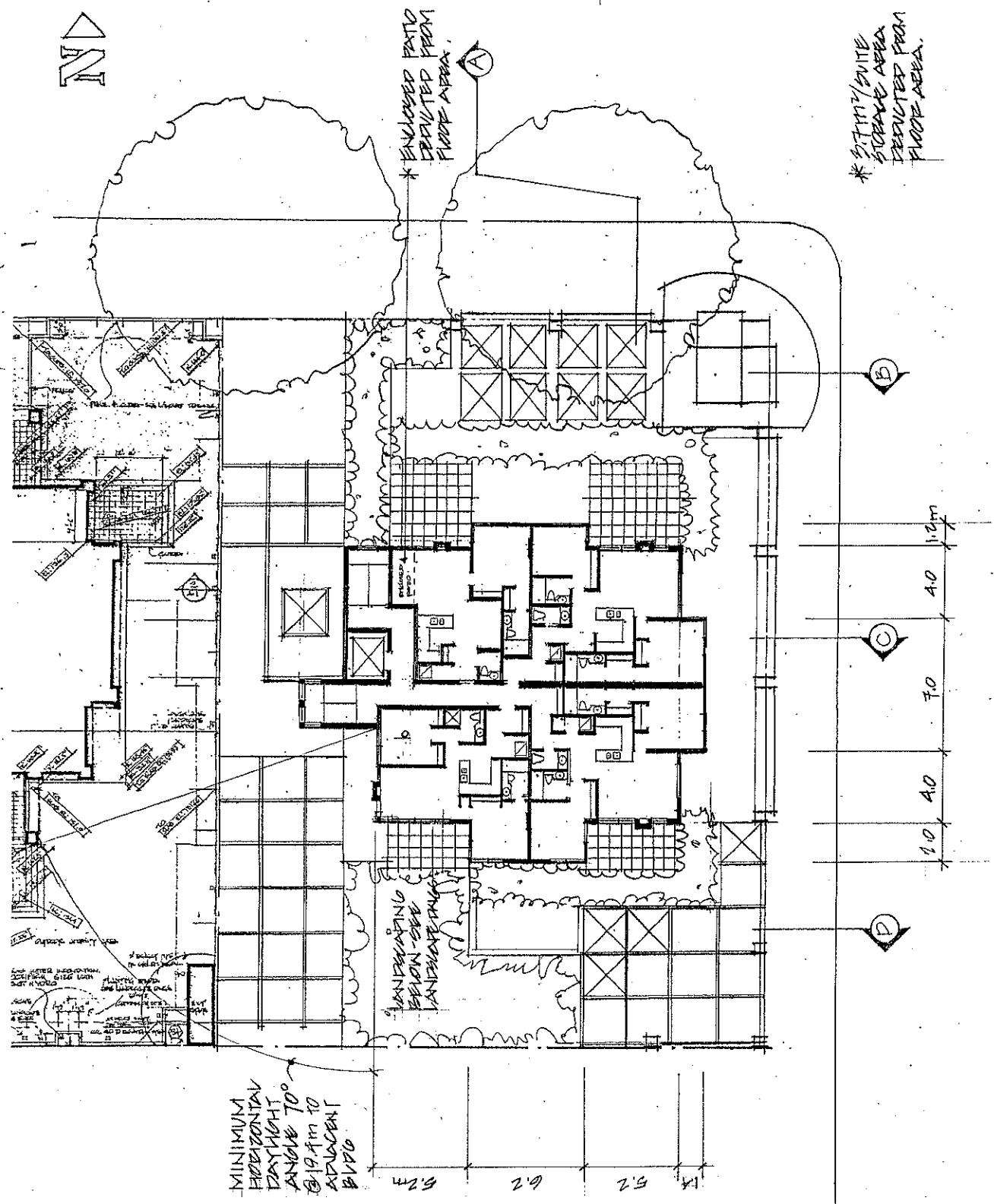
RESTAURANT  
 AREA

TRUCK

ROOF DECK

Denman

NOTES:  
 1. SEE DWG 08 FOR  
 LANDSCAPE PLAN  
 2. SEE DWG 09 FOR  
 MECHANICAL PLAN  
 3. SEE DWG 10 FOR  
 ELECTRICAL PLAN  
 4. SEE DWG 11 FOR  
 PLUMBING PLAN  
 5. SEE DWG 12 FOR  
 STRUCTURAL PLAN  
 6. SEE DWG 13 FOR  
 FINISHES PLAN  
 7. SEE DWG 14 FOR  
 SCHEDULES  
 8. SEE DWG 15 FOR  
 SPECIFICATIONS  
 9. SEE DWG 16 FOR  
 CONTRACT DOCUMENTS  
 10. SEE DWG 17 FOR  
 GENERAL NOTES



MINIMUM  
 HORIZONTAL  
 DAYLIGHT  
 HEIGHT  
 ABOVE TO  
 ANGLE TO  
 @19.4m TO  
 ADJACENT  
 ABOVE

5.27  
 6.2  
 5.2  
 1.4

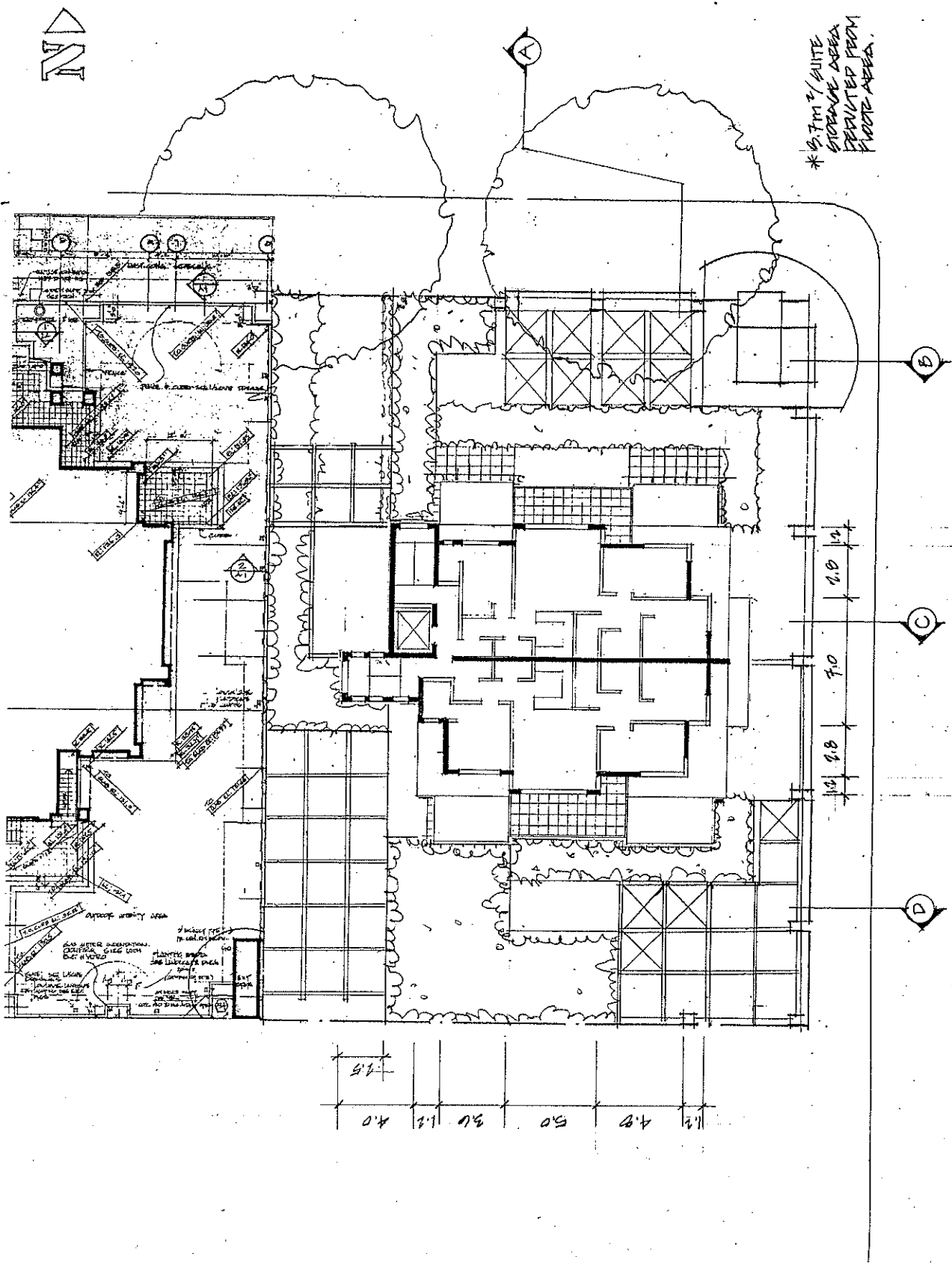
1.0  
 4.0  
 7.0  
 4.0  
 1.2m

\* ENCLOSED PATIO  
 DERIVED FROM  
 FLOOR AREA

\* STAFF/SUITE  
 STORAGE AREA  
 DERIVED FROM  
 FLOOR AREA

HANDICAPPING  
 BEYOND SEE  
 HANDICAPPING



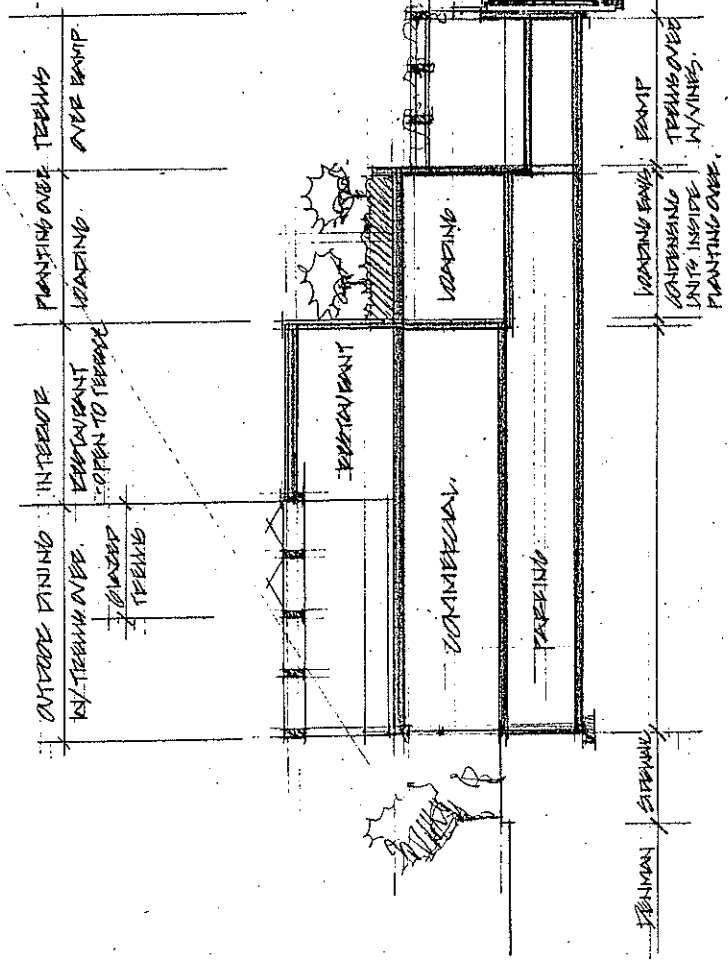
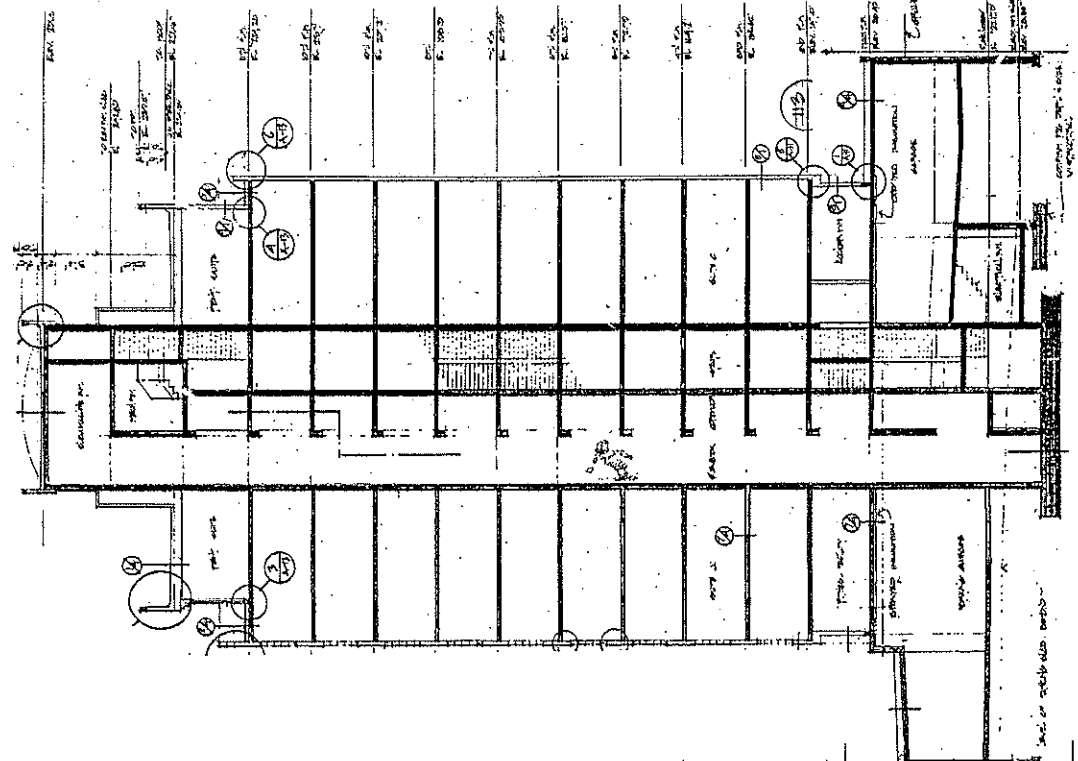






Project: **1111 - 1015**  
**27th Street**  
**VANCOUVER, B.C.**  
 Drawing Title: **SECTION D**

Drawing Number: **A10**  
 Scale: **1/100**  
 Drawn By: **EM**  
 Checked:



PLANTING OVER TERRACE  
 OVER RAMP

INTERIOR  
 RESTAURANT  
 OPEN TO TERRACE  
 PLANTING OVER TERRACE

INTERIOR  
 DINING  
 PLANTING OVER  
 TERRACE

RESTAURANT

COMMERCIAL

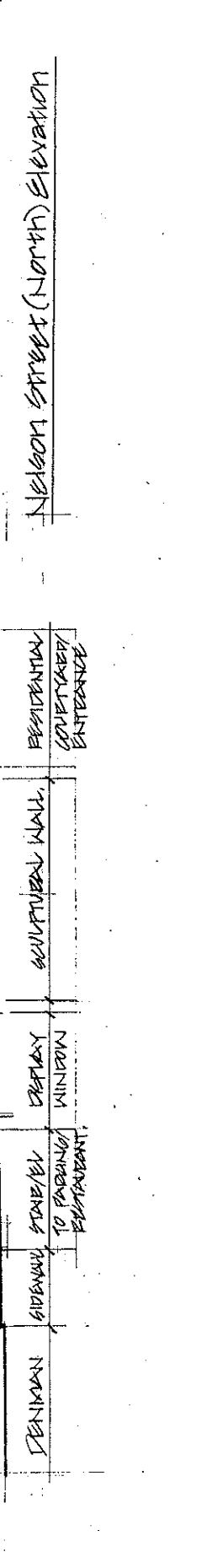
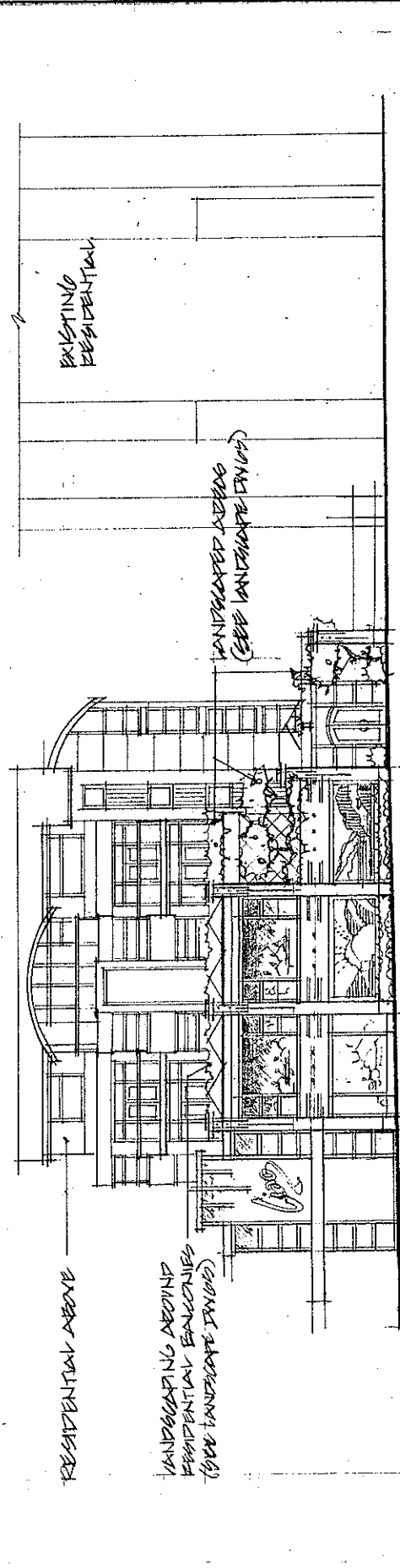
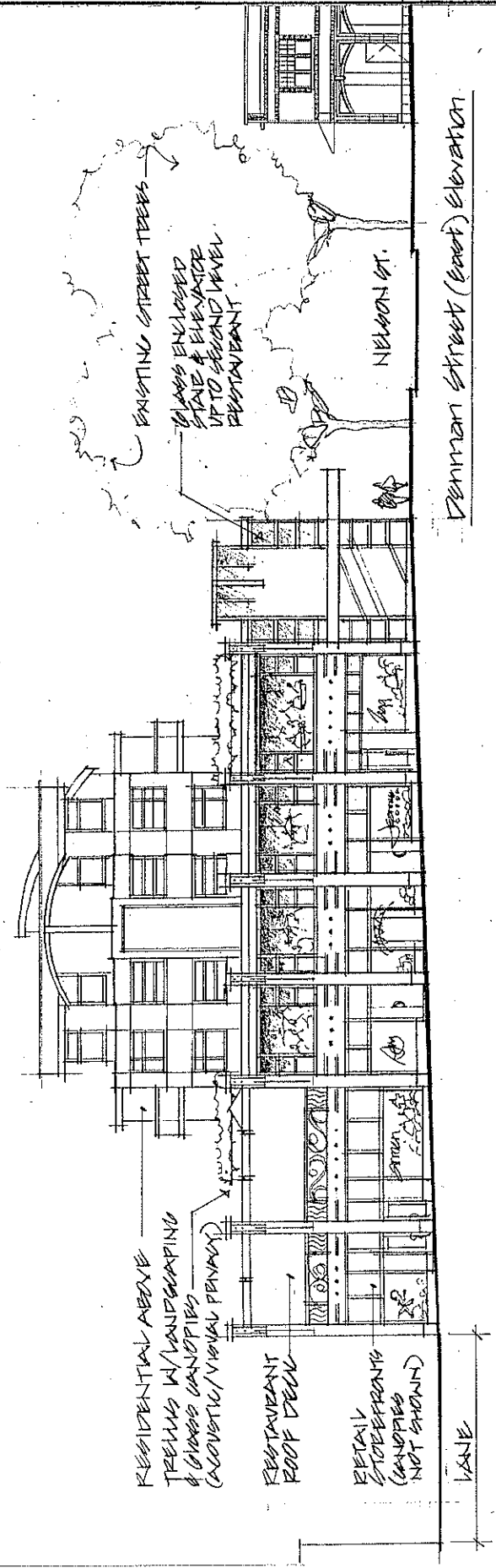
PARKING

LOADING

PLANTING OVER  
 TERRACE  
 OVER  
 RAMP

RESTAURANT







MILLENNIA  
architecture corp  
1090 West Kootenay Road  
North Vancouver BC  
Canada V7P 1Y5  
tel. 604. 990.0280  
fax 604. 992.2316  
cell 604. 628.1844  
millenia@shaw.ca

SEP 11 BEGINNING  
2004 APPLICATION

Project:  
1001-1015  
DENMAN STREET  
VANCOUVER, B.C.

Drawing Title:  
ELEVATIONS  
WEST  
SOUTH (LANE)

Drawing Number:

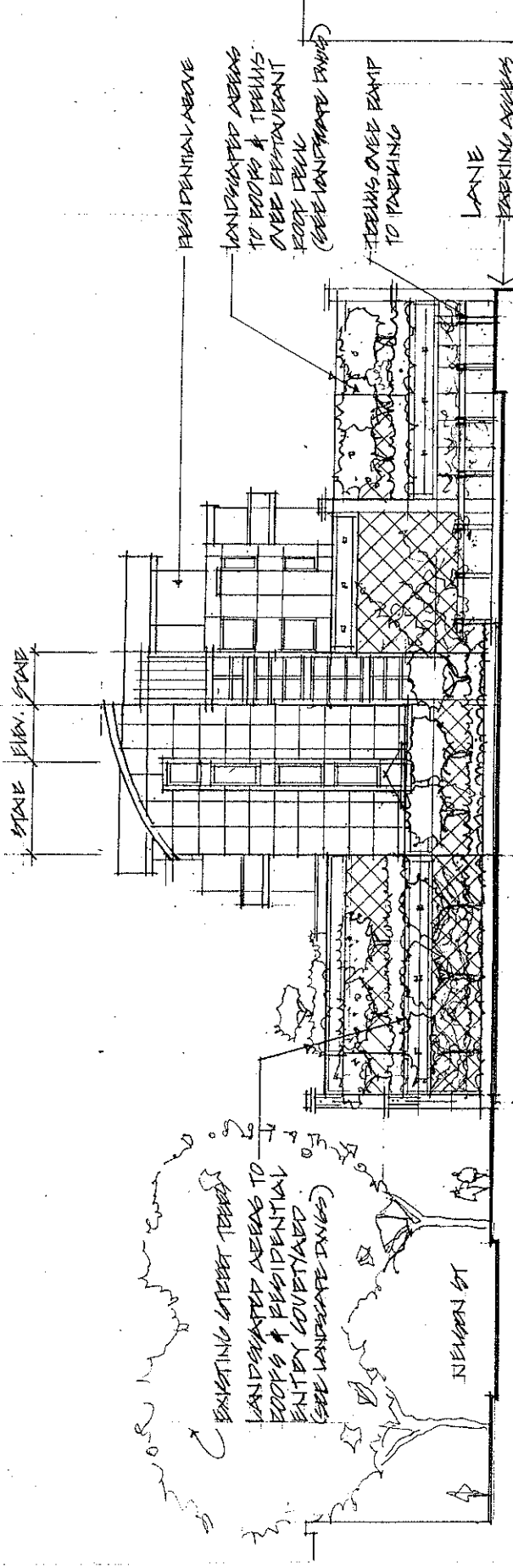
A 12

Scale: 1:100

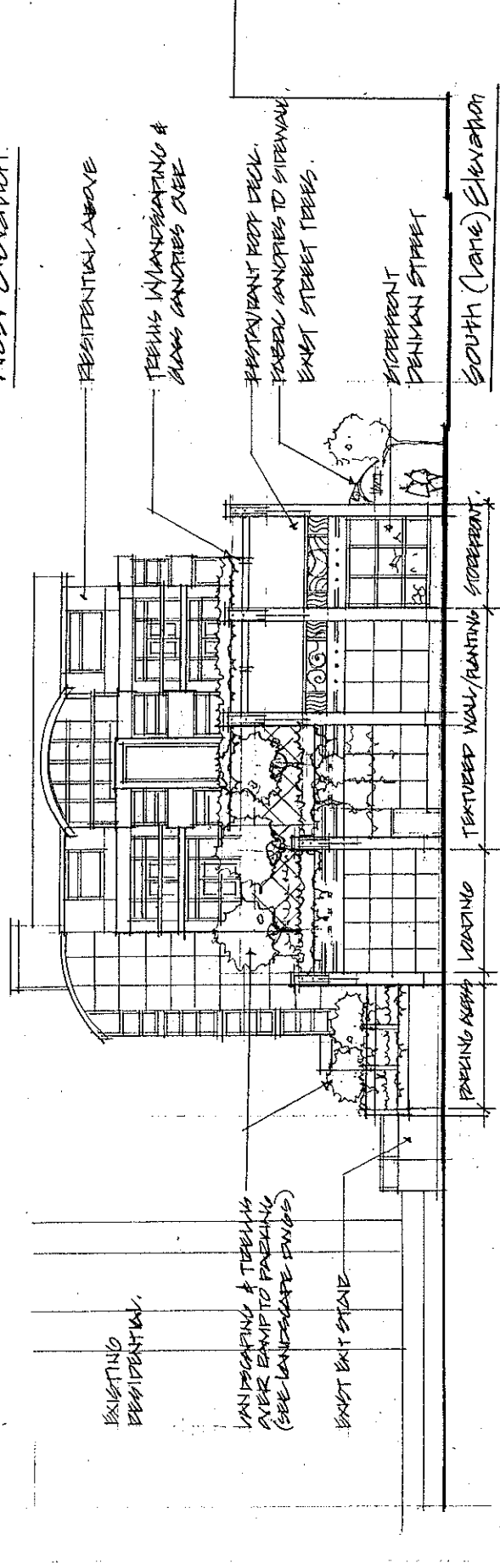
Drawn By: JRM

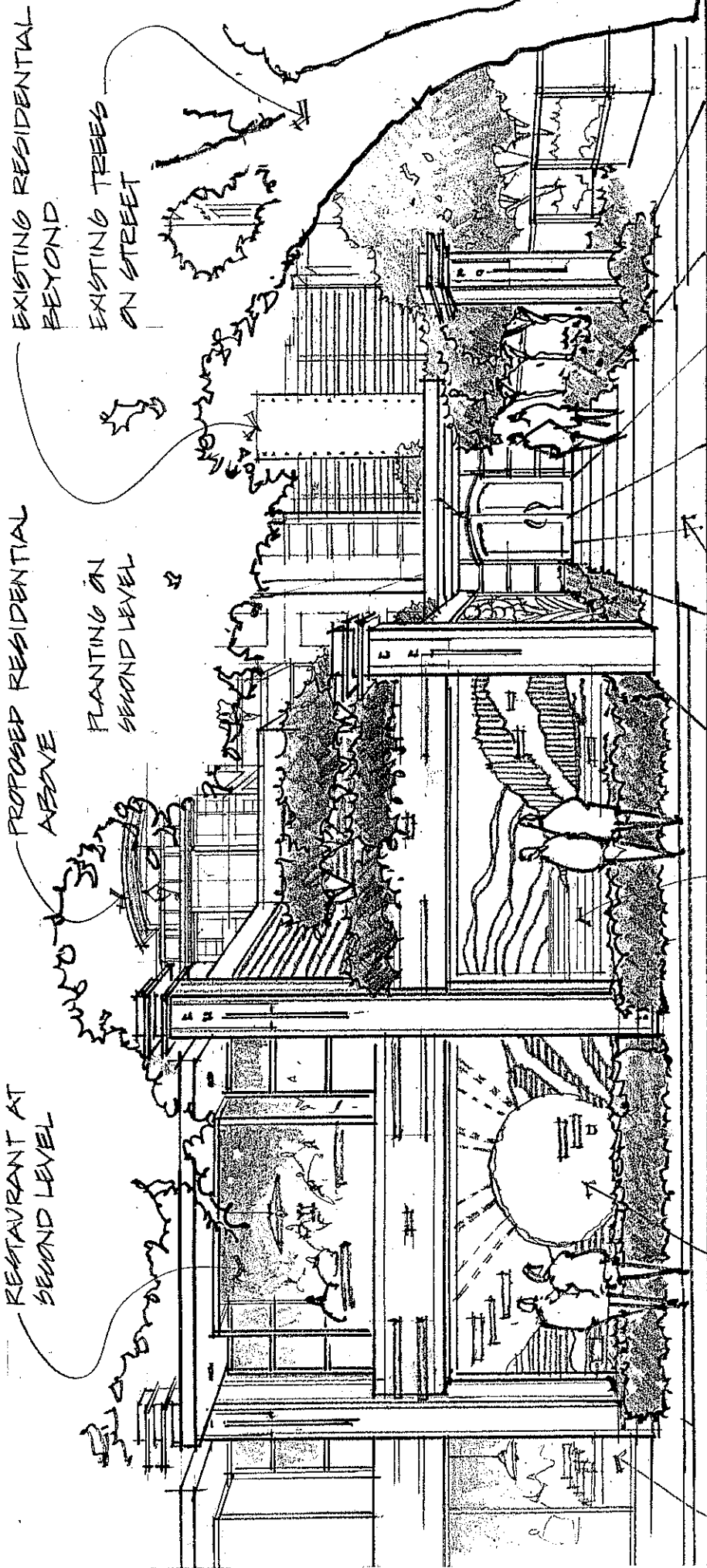
Checked:

Date: 0317



West Elevation





RESTAURANT AT SECOND LEVEL

PROPOSED RESIDENTIAL ABOVE

PLANTING ON SECOND LEVEL

EXISTING RESIDENTIAL BEYOND

EXISTING TREES ON STREET

COMMERCIAL WINDOW

SCULPTURAL WALL PLANTING BELOW

RESIDENTIAL ENTRY COURTYARD

NELSON STREET: RESIDENTIAL ENTRY

SJK 3