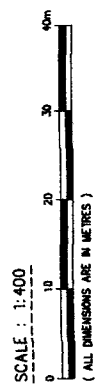


PLAN BCP

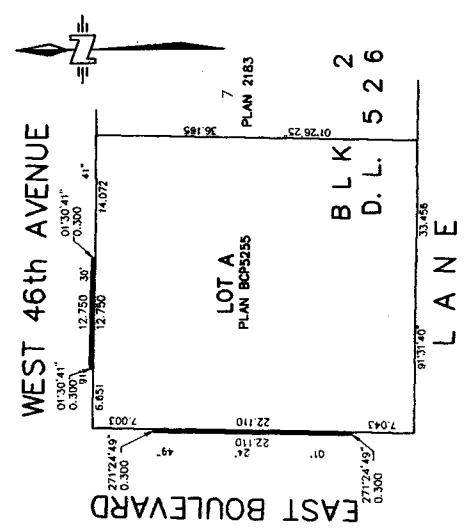
DEPOSITED IN THE LAND TITLE OFFICE
AT NEW WESTMINSTER, B.C.
THIS _____ DAY OF _____
REGISTRAR

EXPLANATORY PLAN OF VOLUMETRIC EASEMENT OVER FIRSTLY: THAT PORTION OF ROAD INCLUDED IN REFERENCE PLAN BCP _____ DEDICATED BY THE DEPOSIT OF PLAN 2183, ABUTTING THE NORTH BOUNDARY OF LOT A, BLOCK 2, DL. 526, GP. 1, N.W.D., PLAN BCP5255; SECONDLY: THAT PORTION OF ROAD INCLUDED IN REFERENCE PLAN BCP _____ DEDICATED BY THE DEPOSIT OF PLAN 1173, ABUTTING THE WEST BOUNDARY OF LOT A, BLOCK 2, DL. 526, GP. 1, N.W.D., PLAN BCP5255
CITY OF VANCOUVER
B.C.G.S. 92G.025

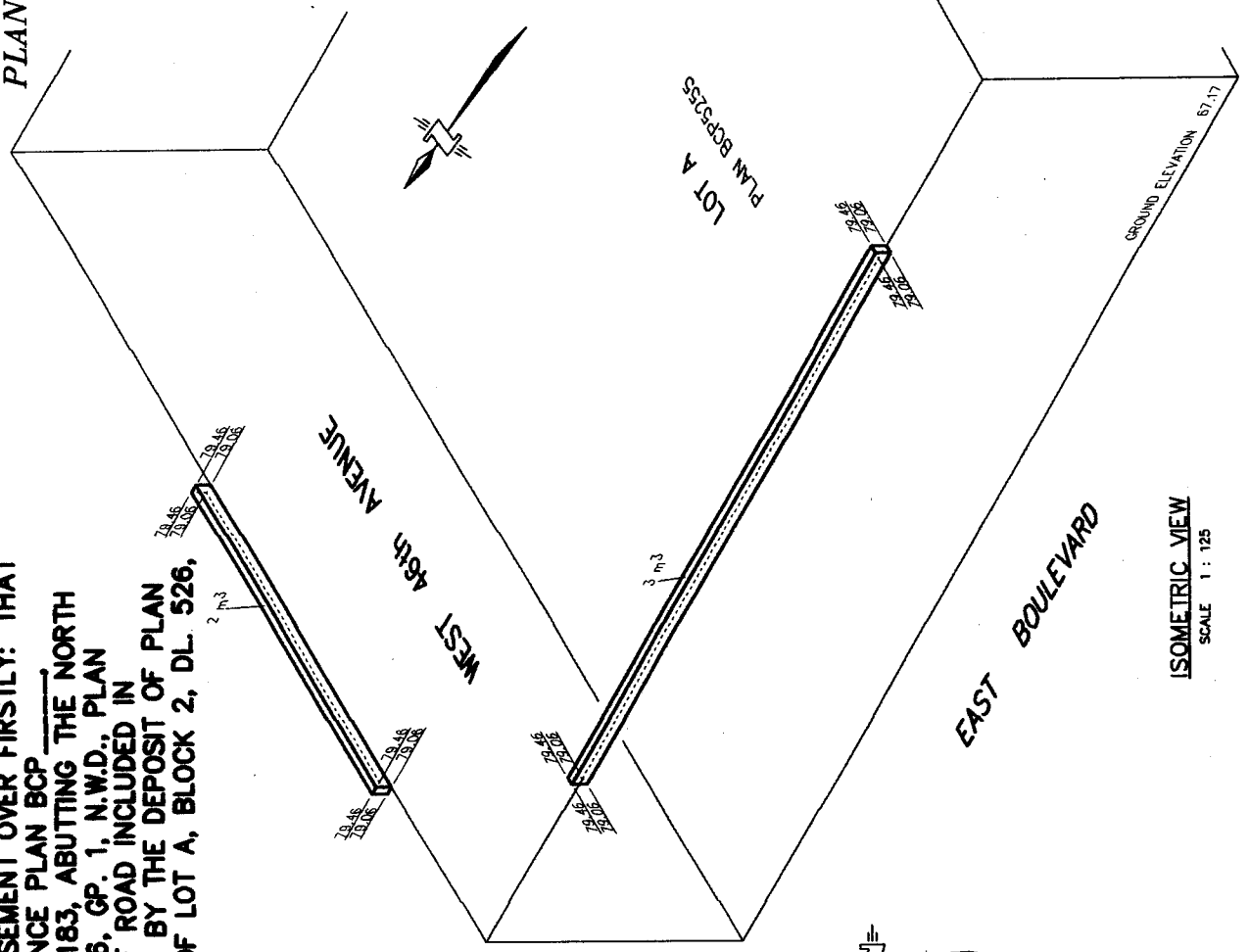


LEGEND
ELEVATIONS ARE GEOMETRIC AND ARE DERIVED FROM CHANDELIER MONUMENT 14-128A. ELEVATION IS IN METRES.
ALL DISTANCES AND ELEVATIONS ARE IN METRES UNLESS OTHERWISE NOTED.
GRID BEARINGS HAD 83 (CGRS) ARE DERIVED FROM PLAN BCP _____

| BOOK OF REFERENCE | LEGAL DESCRIPTION | AREA | VOLUME |
|--|-------------------|------------------|------------------|
| ROAD INCLUDED IN REFERENCE PLAN BCP _____ DEDICATED BY THE DEPOSIT OF PLAN 2183, ABUTTING THE NORTH BOUNDARY OF LOT A, BLOCK 2, DL. 526, GP. 1, N.W.D. | | 4 m ² | 2 m ³ |
| ROAD INCLUDED IN REFERENCE PLAN BCP _____ DEDICATED BY THE DEPOSIT OF PLAN 1173, ABUTTING THE WEST BOUNDARY OF LOT A, BLOCK 2, DL. 526, GP. 1, N.W.D. | | 7 m ² | 3 m ³ |



PLAN VIEW
SCALE 1 : 400



ISOMETRIC VIEW
SCALE 1 : 125

CERTIFIED CORRECT ACCORDING TO LAND TITLE OFFICE RECORDS THIS 30TH DAY OF JUNE, 2004.

[Signature]
ESP/7503 B.C.L.S.

M
McGIBBON
REGISTRY ASSOCIATES
PROFESSIONAL LAND SURVEYORS
1100 780 REALTY STREET
VANCOUVER, B.C. V6B 2M1
TEL 212-8892-1

THIS PLAN LIES WITHIN THE GREATER VANCOUVER REGIONAL DISTRICT