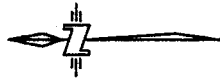


REFERENCE PLAN TO ACCOMPANY
 RESOLUTION OF THE COUNCIL OF THE CITY
 OF VANCOUVER STOPPING UP PORTION OF
 LANE DEDICATED BY THE DEPOSIT OF PLAN
 5251, ADJACENT TO LOT D, BLOCK 34, D. L.
 185, GP. 1, N.W.D., PLAN 5251.

B.C.G.S. 926.025

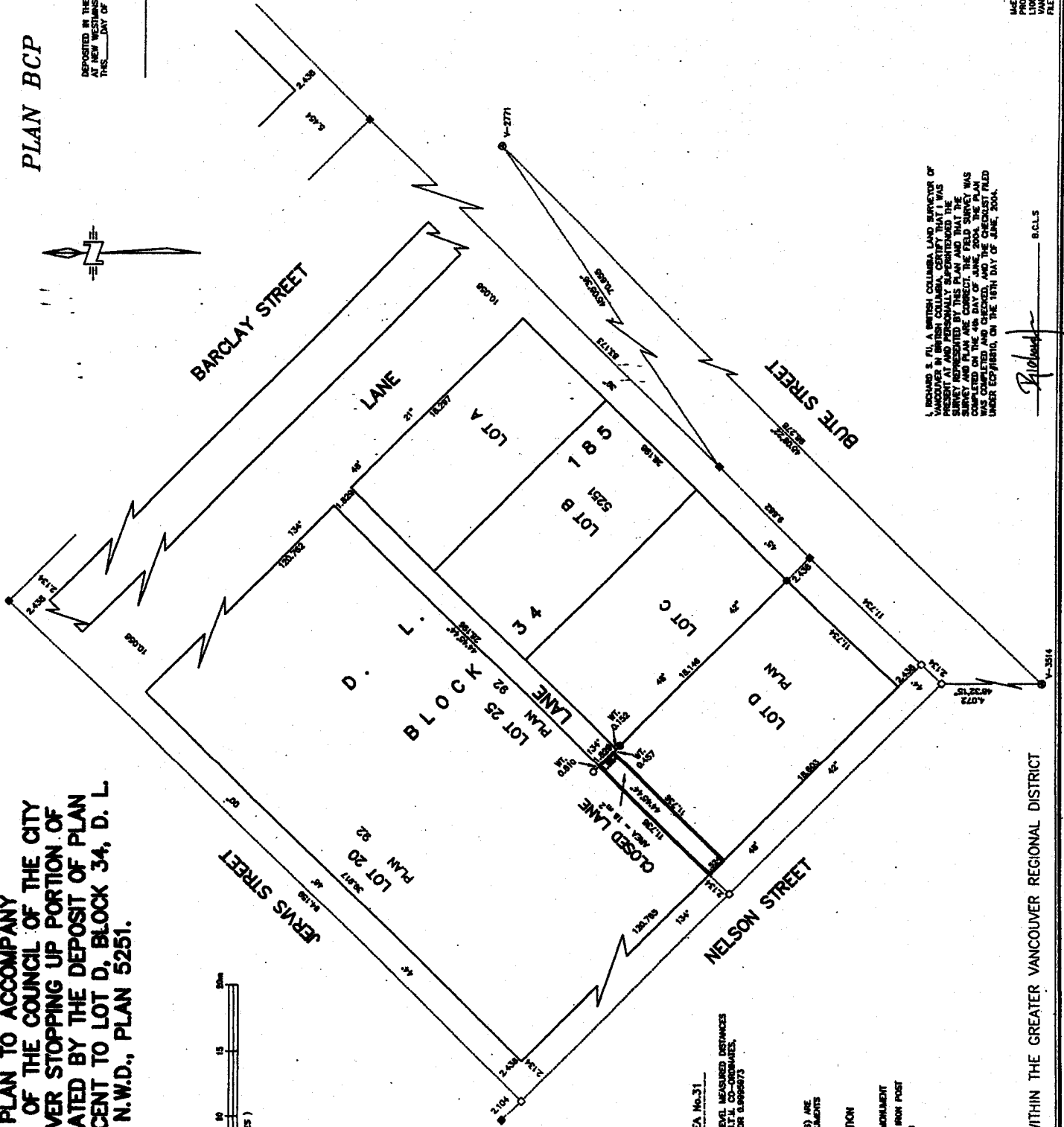
SCALE : 1:200



PLAN BCP

DEPOSITED IN THE LAND TITLE OFFICE
 AT NEW WESTMINSTER, B.C.
 THIS _____ DAY OF _____

REGISTRAR



INTEGRATED SURVEY AREA No. 31

THIS PLAN SHOWS GROUND LEVEL MEASURED DISTANCES
 PRIOR TO COMPUTATION OF UTIL CO-ORDINATES.
 MULTIPLY BY CORRECTION FACTOR 0.999973

LEGEND

ORD BEARINGS AND DISTANCES ARE
 DERIVED FROM CONTROL MONUMENTS
 V-5514 AND V-2771

SYMBOLS DESCRIPTION

FOUND PLACED

- ⊙ CONTROL MONUMENT
- STANDARD IRON POST
- LEAD PLUG

I, RICHARD S. PILL, A BRITISH COLUMBIA LAND SURVEYOR OF
 VANCOUVER IN BRITISH COLUMBIA, CERTIFY THAT I WAS
 PRESENT AT AND PERSONALLY SUPERINTENDED THE
 SURVEY AND MONUMENTS SHOWN IN THIS PLAN AND THAT THE
 SURVEY WAS COMPLETED BY THIS PLAN AND THAT THE
 PLAN WAS COMPLETED ON THE 16TH DAY OF JUNE, 2004. THE PLAN
 WAS COMPLETED AND CHECKED, AND THE CHECKLIST FILED
 UNDER COPYRIGHT, ON THE 16TH DAY OF JUNE, 2004.

Richard S. Pill
 R.S.P.
 B.C.L.S.

McEwen
 McEwen Associates
 PROFESSIONAL LAND SURVEYORS
 1100 780 BEATTY STREET
 VANCOUVER, B.C. V6B 2M1
 TEL: 213-0339-9

THIS PLAN LIES WITHIN THE GREATER VANCOUVER REGIONAL DISTRICT