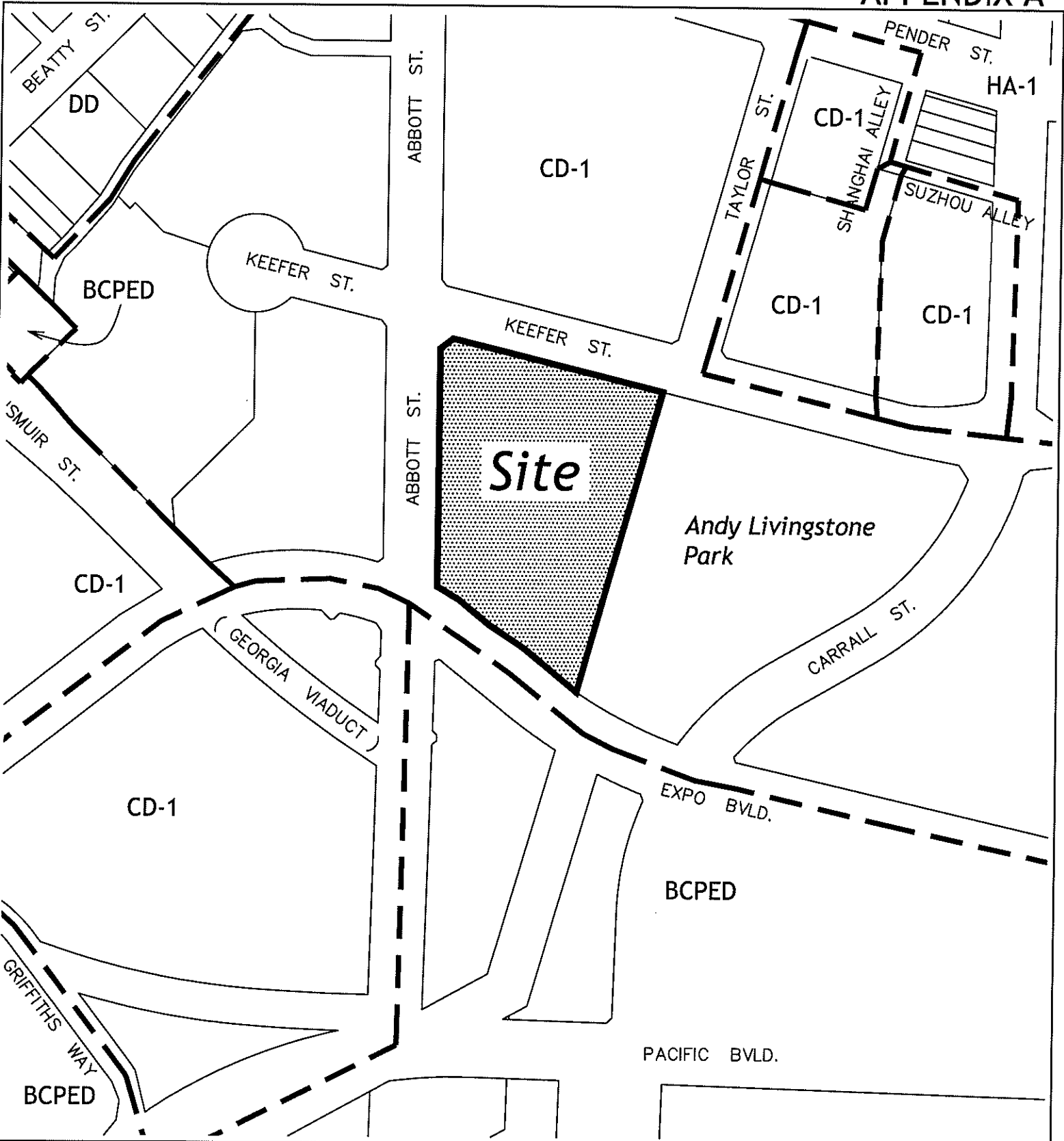


APPENDIX A



--- ZONING BOUNDARY



Site: 600 Abbott St DE 408032

Date: 2004 June 30

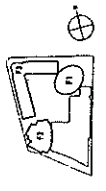
City of Vancouver Planning Department

Drawn: TM

Scale: 1:2000

DATE: **REVISIONS BY**
 OCT 20, 01 ISSUED FOR COMPLETE
 MAY 14, 01 REISSUED FOR PHASE 1

- LOCUS:**
- 1.0000 - 100% COMPLETE
 - 1.0001 - 90% COMPLETE
 - 1.0002 - 80% COMPLETE
 - 1.0003 - 70% COMPLETE
 - 1.0004 - 60% COMPLETE
 - 1.0005 - 50% COMPLETE
 - 1.0006 - 40% COMPLETE
 - 1.0007 - 30% COMPLETE
 - 1.0008 - 20% COMPLETE
 - 1.0009 - 10% COMPLETE
 - 1.0010 - NOT STARTED
- LEGEND:**
- 1.0000 - 100% COMPLETE
 - 1.0001 - 90% COMPLETE
 - 1.0002 - 80% COMPLETE
 - 1.0003 - 70% COMPLETE
 - 1.0004 - 60% COMPLETE
 - 1.0005 - 50% COMPLETE
 - 1.0006 - 40% COMPLETE
 - 1.0007 - 30% COMPLETE
 - 1.0008 - 20% COMPLETE
 - 1.0009 - 10% COMPLETE
 - 1.0010 - NOT STARTED

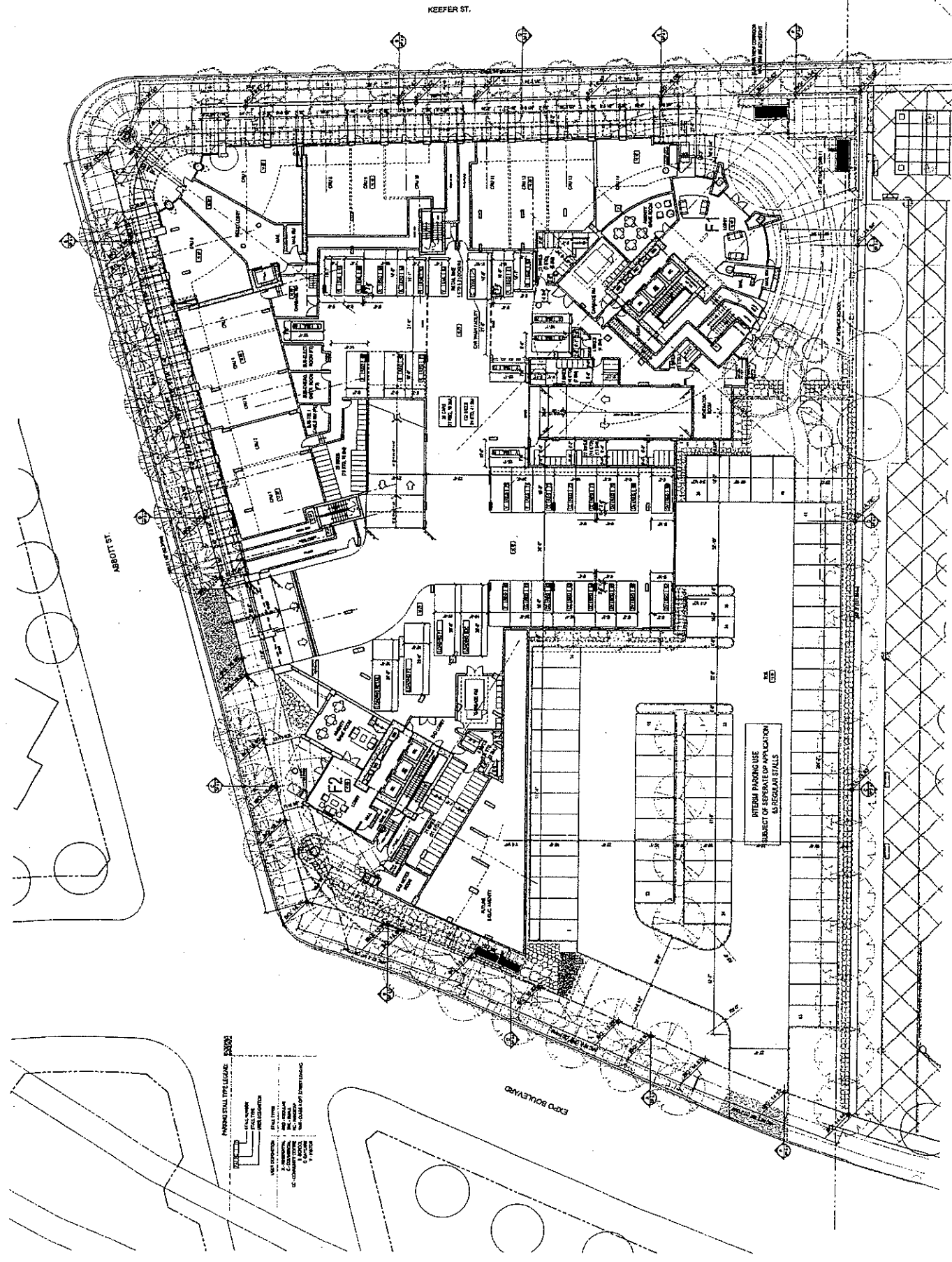


**Hendrick
 Brinkner
 Eng + Wright
 ARCHITECTS**
 200 JAMES STREET, VANCOUVER, B.C. V6C 2T5
 Phone: (604) 681-3171 Fax: (604) 681-1278

PROJECT TITLE:
 FIRENZE (I & II)

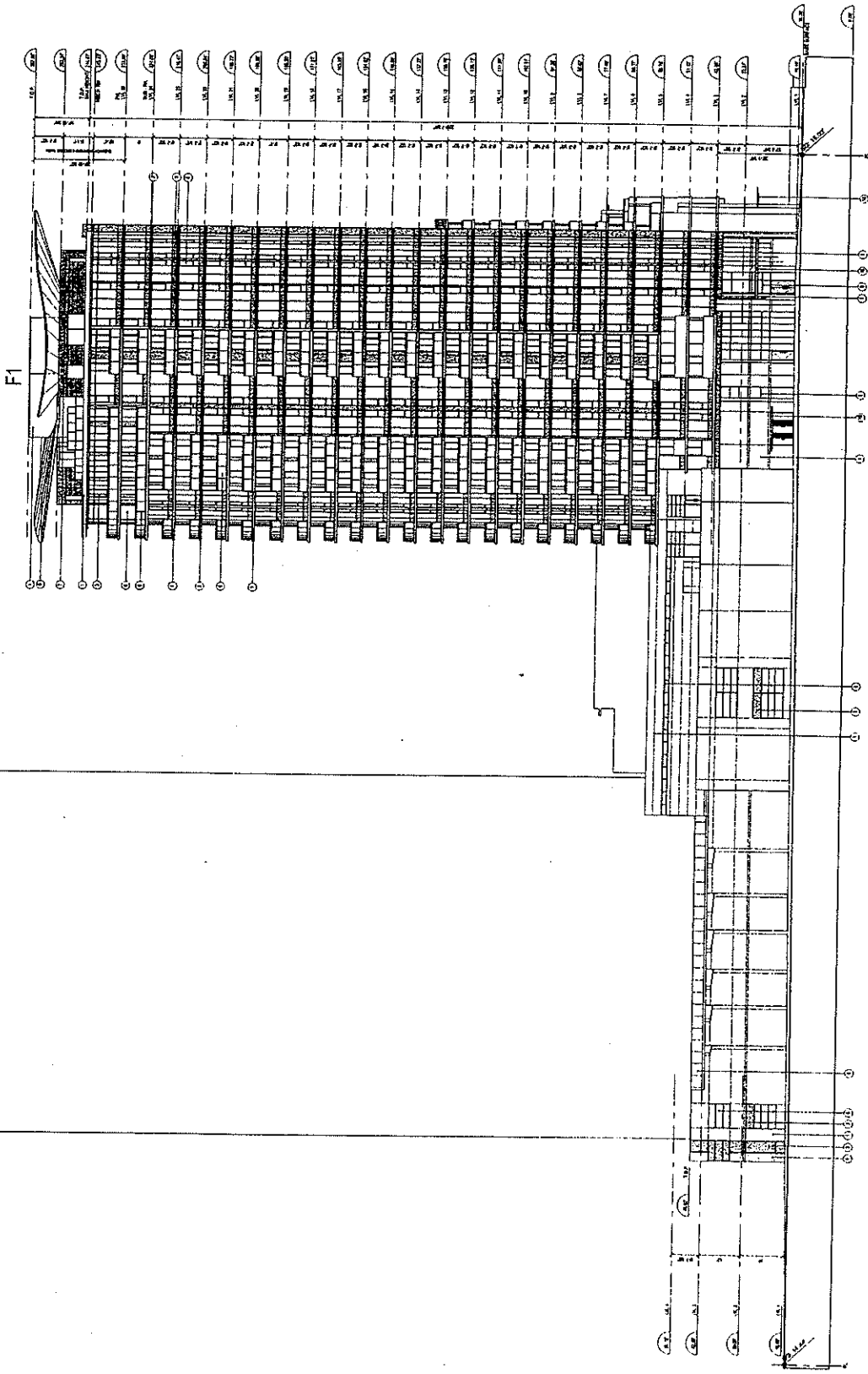
**600 ABBOTT STREET
 VANCOUVER**

SHEET TITLE:
 OVERALL SITE PLAN
 LEVEL 1



- MATERIAL LEGEND**
- 1 PAINTED ARCHITECTURAL CONCRETE
 - 2 POLYURETHANE GLASS
 - 3 SPANISH SLATE
 - 4 STAINLESS
 - 5 BRASS
 - 6 BRASS
 - 7 BRASS
 - 8 BRASS
 - 9 BRASS
 - 10 BRASS
 - 11 BRASS
 - 12 BRASS
 - 13 BRASS
 - 14 BRASS
 - 15 BRASS
 - 16 BRASS
 - 17 BRASS
 - 18 BRASS
 - 19 BRASS
 - 20 BRASS
 - 21 BRASS
 - 22 BRASS
 - 23 BRASS
 - 24 BRASS
 - 25 BRASS
 - 26 BRASS
 - 27 BRASS
 - 28 BRASS
 - 29 BRASS
 - 30 BRASS
 - 31 BRASS
 - 32 BRASS
 - 33 BRASS
 - 34 BRASS
 - 35 BRASS
 - 36 BRASS
 - 37 BRASS
 - 38 BRASS
 - 39 BRASS
 - 40 BRASS
 - 41 BRASS
 - 42 BRASS
 - 43 BRASS
 - 44 BRASS
 - 45 BRASS
 - 46 BRASS
 - 47 BRASS
 - 48 BRASS
 - 49 BRASS
 - 50 BRASS
 - 51 BRASS
 - 52 BRASS
 - 53 BRASS
 - 54 BRASS
 - 55 BRASS
 - 56 BRASS
 - 57 BRASS
 - 58 BRASS
 - 59 BRASS
 - 60 BRASS
 - 61 BRASS
 - 62 BRASS
 - 63 BRASS
 - 64 BRASS
 - 65 BRASS
 - 66 BRASS
 - 67 BRASS
 - 68 BRASS
 - 69 BRASS
 - 70 BRASS
 - 71 BRASS
 - 72 BRASS
 - 73 BRASS
 - 74 BRASS
 - 75 BRASS
 - 76 BRASS
 - 77 BRASS
 - 78 BRASS
 - 79 BRASS
 - 80 BRASS
 - 81 BRASS
 - 82 BRASS
 - 83 BRASS
 - 84 BRASS
 - 85 BRASS
 - 86 BRASS
 - 87 BRASS
 - 88 BRASS
 - 89 BRASS
 - 90 BRASS
 - 91 BRASS
 - 92 BRASS
 - 93 BRASS
 - 94 BRASS
 - 95 BRASS
 - 96 BRASS
 - 97 BRASS
 - 98 BRASS
 - 99 BRASS
 - 100 BRASS

F2



SEAL:

PROFESSIONAL ARCHITECT
 1000 WEST 10TH AVENUE, SUITE 1000
 VANCOUVER, BRITISH COLUMBIA V6H 1A1
 TEL: (604) 681-1111
 FAX: (604) 681-1112
 WWW: WWW.HENNINGSON-ROCKWELL.COM

DATE: 01/10/08
 DRAWING NO.: 08-001
 SHEET NO.: 08-001-01
 PROJECT NO.: 08-001

DATE ISSUED FOR CONSTRUCTION: 01/10/08
 DATE ISSUED FOR PERMIT: 01/10/08

HENNINGSON
 ROCKWELL
 Eng + Arch
 ARCHITECTS
 1000 WEST 10TH AVENUE, SUITE 1000
 VANCOUVER, BRITISH COLUMBIA V6H 1A1

PROJECT TITLE:
 FIRENZE

600 ABBOTT STREET
 VANCOUVER

SHEET TITLE:
 EAST ELEVATION
 PARK

MATERIAL LEGEND

- 1 FINISHED ARCHITECTURAL CONCRETE
- 2 WHITE SPANISH MARBLE
- 3 POLISHED BRASS
- 4 BRASS
- 5 BRASS
- 6 BRASS
- 7 POLISHED BRASS PANEL
- 8 BRASS
- 9 BRASS
- 10 BRASS
- 11 BRASS
- 12 BRASS
- 13 BRASS
- 14 BRASS
- 15 BRASS

REVISIONS

DATE	REVISIONS	BY
OCT 24 00	ISSUED FOR COMPLETE DP	
MAY 24 04	RESUBMITTED FOR DP PRIOR TO	

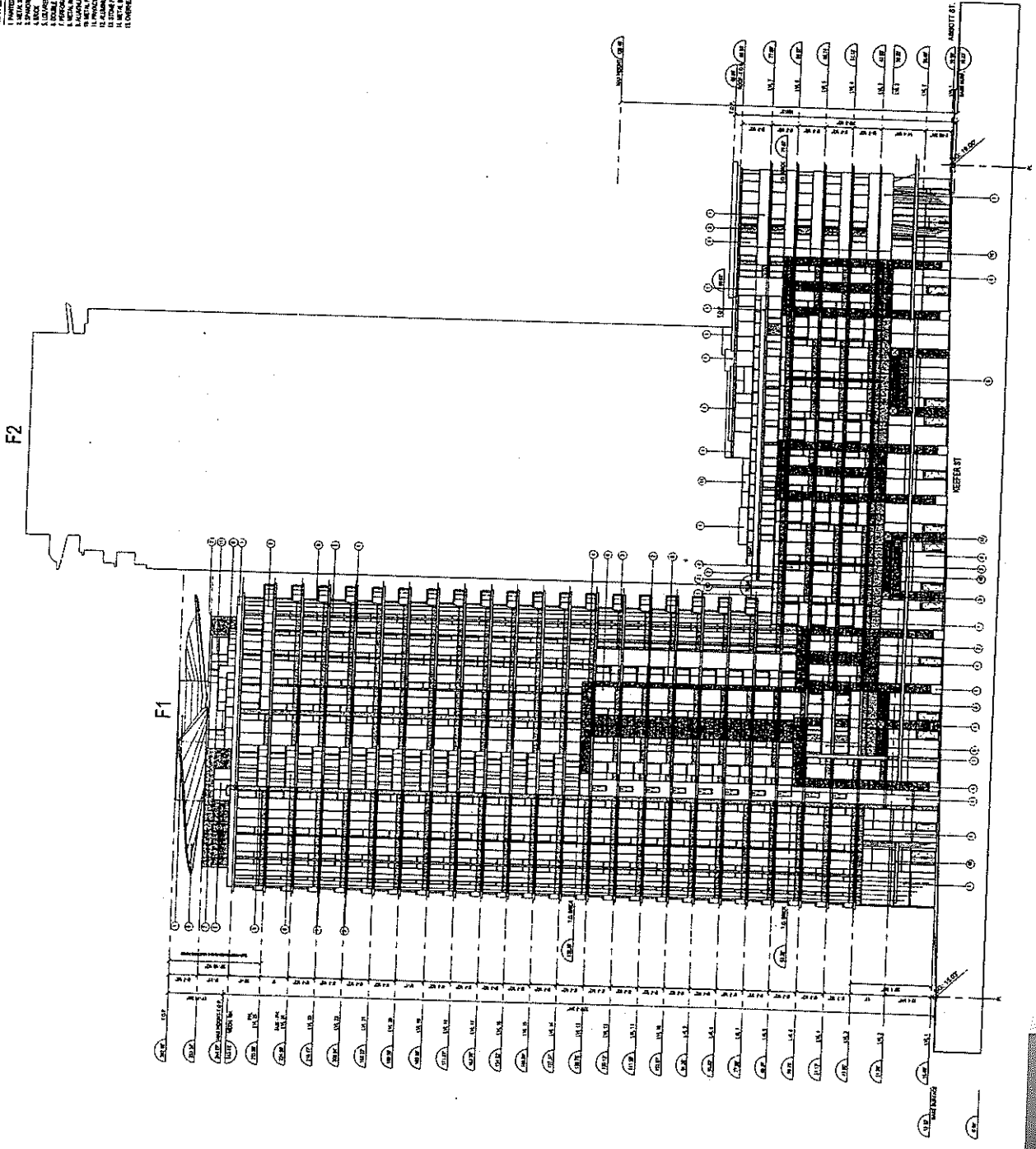
HARCOCK
BRIDGEMAN
ENG + ARCHT
ARCHITECTS

2001 West Georgia St. Vancouver, B.C. V6B 4Y1
Phone: (604) 681-7777 Fax: (604) 681-7770

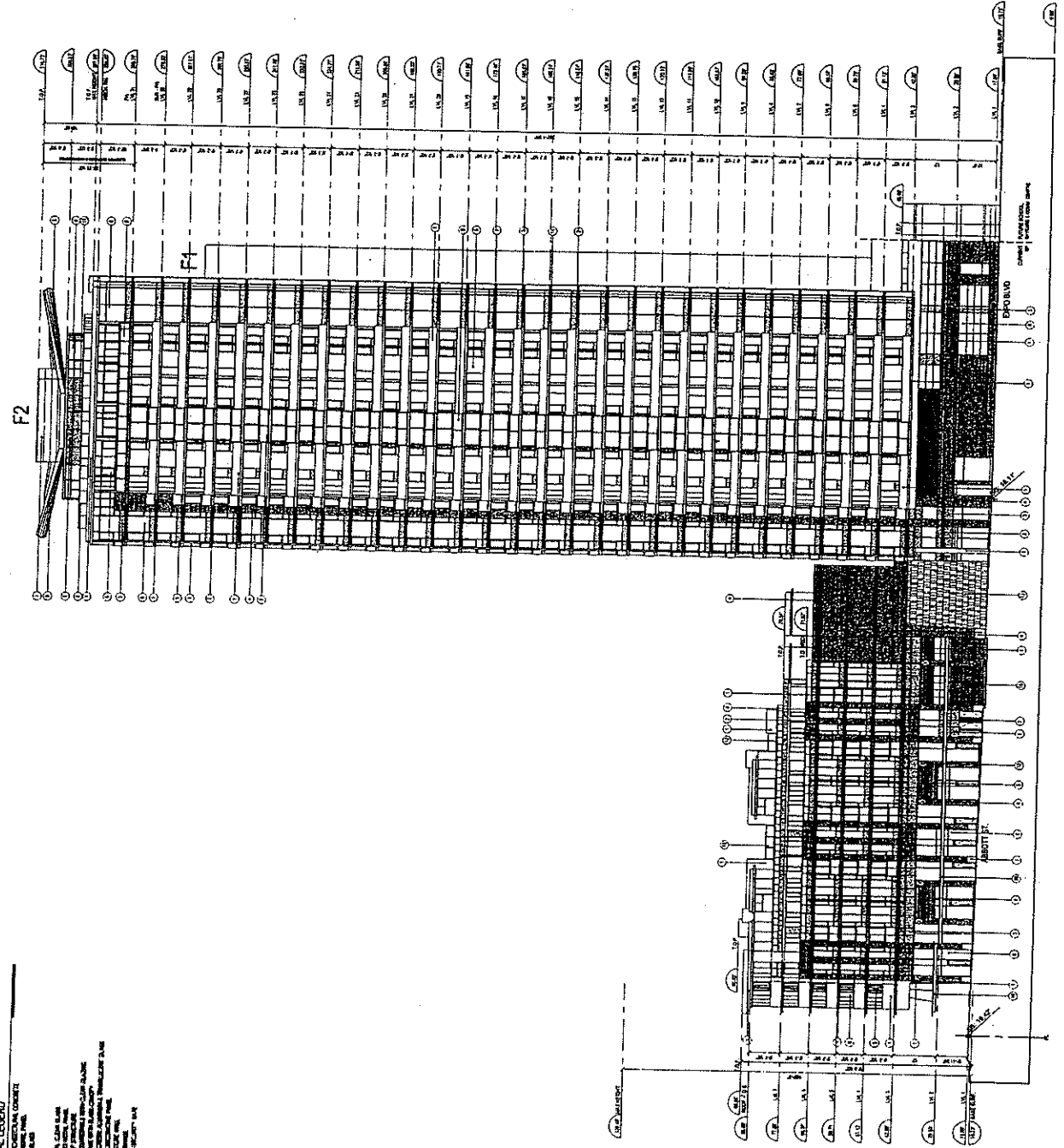
PROJECT TITLE:
FIRENZE

600 ABBOTT STREET
VANCOUVER

SHEET TITLE:
NORTH ELEVATION
KEEPER STREET



- MATERIAL LEGEND**
- 1. 100% POLYMER CONCRETE
 - 2. 100% POLYMER CONCRETE
 - 3. 100% POLYMER CONCRETE
 - 4. 100% POLYMER CONCRETE
 - 5. 100% POLYMER CONCRETE
 - 6. 100% POLYMER CONCRETE
 - 7. 100% POLYMER CONCRETE
 - 8. 100% POLYMER CONCRETE
 - 9. 100% POLYMER CONCRETE
 - 10. 100% POLYMER CONCRETE
 - 11. 100% POLYMER CONCRETE
 - 12. 100% POLYMER CONCRETE
 - 13. 100% POLYMER CONCRETE
 - 14. 100% POLYMER CONCRETE
 - 15. 100% POLYMER CONCRETE
 - 16. 100% POLYMER CONCRETE
 - 17. 100% POLYMER CONCRETE
 - 18. 100% POLYMER CONCRETE
 - 19. 100% POLYMER CONCRETE
 - 20. 100% POLYMER CONCRETE
 - 21. 100% POLYMER CONCRETE
 - 22. 100% POLYMER CONCRETE
 - 23. 100% POLYMER CONCRETE
 - 24. 100% POLYMER CONCRETE
 - 25. 100% POLYMER CONCRETE
 - 26. 100% POLYMER CONCRETE
 - 27. 100% POLYMER CONCRETE
 - 28. 100% POLYMER CONCRETE
 - 29. 100% POLYMER CONCRETE
 - 30. 100% POLYMER CONCRETE
 - 31. 100% POLYMER CONCRETE
 - 32. 100% POLYMER CONCRETE
 - 33. 100% POLYMER CONCRETE
 - 34. 100% POLYMER CONCRETE
 - 35. 100% POLYMER CONCRETE
 - 36. 100% POLYMER CONCRETE
 - 37. 100% POLYMER CONCRETE
 - 38. 100% POLYMER CONCRETE
 - 39. 100% POLYMER CONCRETE
 - 40. 100% POLYMER CONCRETE
 - 41. 100% POLYMER CONCRETE
 - 42. 100% POLYMER CONCRETE
 - 43. 100% POLYMER CONCRETE
 - 44. 100% POLYMER CONCRETE
 - 45. 100% POLYMER CONCRETE
 - 46. 100% POLYMER CONCRETE
 - 47. 100% POLYMER CONCRETE
 - 48. 100% POLYMER CONCRETE
 - 49. 100% POLYMER CONCRETE
 - 50. 100% POLYMER CONCRETE
 - 51. 100% POLYMER CONCRETE
 - 52. 100% POLYMER CONCRETE
 - 53. 100% POLYMER CONCRETE
 - 54. 100% POLYMER CONCRETE
 - 55. 100% POLYMER CONCRETE
 - 56. 100% POLYMER CONCRETE
 - 57. 100% POLYMER CONCRETE
 - 58. 100% POLYMER CONCRETE
 - 59. 100% POLYMER CONCRETE
 - 60. 100% POLYMER CONCRETE
 - 61. 100% POLYMER CONCRETE
 - 62. 100% POLYMER CONCRETE
 - 63. 100% POLYMER CONCRETE
 - 64. 100% POLYMER CONCRETE
 - 65. 100% POLYMER CONCRETE
 - 66. 100% POLYMER CONCRETE
 - 67. 100% POLYMER CONCRETE
 - 68. 100% POLYMER CONCRETE
 - 69. 100% POLYMER CONCRETE
 - 70. 100% POLYMER CONCRETE
 - 71. 100% POLYMER CONCRETE
 - 72. 100% POLYMER CONCRETE
 - 73. 100% POLYMER CONCRETE
 - 74. 100% POLYMER CONCRETE
 - 75. 100% POLYMER CONCRETE
 - 76. 100% POLYMER CONCRETE
 - 77. 100% POLYMER CONCRETE
 - 78. 100% POLYMER CONCRETE
 - 79. 100% POLYMER CONCRETE
 - 80. 100% POLYMER CONCRETE
 - 81. 100% POLYMER CONCRETE
 - 82. 100% POLYMER CONCRETE
 - 83. 100% POLYMER CONCRETE
 - 84. 100% POLYMER CONCRETE
 - 85. 100% POLYMER CONCRETE
 - 86. 100% POLYMER CONCRETE
 - 87. 100% POLYMER CONCRETE
 - 88. 100% POLYMER CONCRETE
 - 89. 100% POLYMER CONCRETE
 - 90. 100% POLYMER CONCRETE
 - 91. 100% POLYMER CONCRETE
 - 92. 100% POLYMER CONCRETE
 - 93. 100% POLYMER CONCRETE
 - 94. 100% POLYMER CONCRETE
 - 95. 100% POLYMER CONCRETE
 - 96. 100% POLYMER CONCRETE
 - 97. 100% POLYMER CONCRETE
 - 98. 100% POLYMER CONCRETE
 - 99. 100% POLYMER CONCRETE
 - 100. 100% POLYMER CONCRETE



SEAL:

DATE: 10/10/2017

BY: [Signature]

PROJECT: 600 ABBOTT STREET VANCOUVER

DATE REVISION BY:

DATE: 10/10/2017

BY: [Signature]

PROJECT: 600 ABBOTT STREET VANCOUVER

DATE REVISION BY:

DATE: 10/10/2017

BY: [Signature]

PROJECT: 600 ABBOTT STREET VANCOUVER

Vanocock
 Blockley
 Eng + Wright
 ARCHITECTS

200 West 4th Street, Vancouver, B.C. V6B 2T3
 Tel: 604 681 4444 Fax: 604 681 4478

PROJECT TITLE:
 FIRENZE

600 ABBOTT STREET
 VANCOUVER

SHEET TITLE:
 SOUTH ELEVATION
 EXPO BOULEVARD