

— — — — — ZONING BOUNDARY



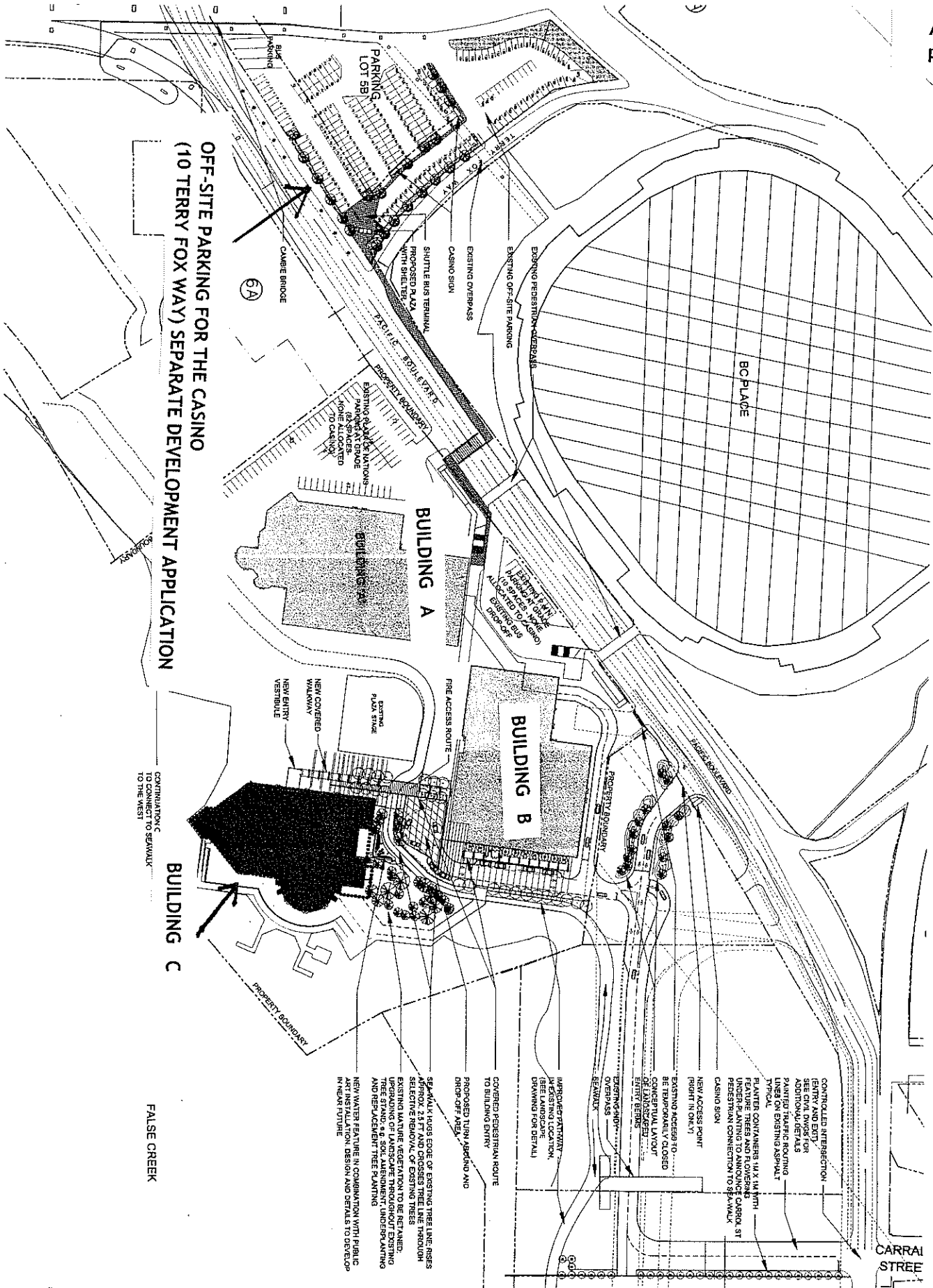
Site: 750 Pacific Blvd. DE 408507

Date: 2004 July 06

City of Vancouver Planning Department

Drawn: TM

Scale: 1:5000



**OFF-SITE PARKING FOR THE CASINO
(10 TERRY FOX WAY) SEPARATE DEVELOPMENT APPLICATION**

CONTRIBUTION C
TO CONNECT TO SEWAGE
TO THE WEST

FALSE CREEK

NOTES



- CONTROLLED INTERSECTION ENTRY AND EXIT SEE CIVIL DRAWING FOR DETAILS. PAINTED CURBING AND LINES ON EXISTING ASPHALT TYPICAL.
- PLANTER CONTAINERS 14 X 14 WITH FEATURE TREES AND FLOWERING PERENNIALS TO ADVANCE CARBON SIT PRESERVATION CONNECTION TO SEWAGE.
- CASINO SIGN
- NEW ACCESS POINT (FRONT IN ONLY)
- EXISTING ACCESS TO BE TEMPORARILY CLOSED CONCEPTUAL LAYOUT OF LANDSCAPED ENTRY DECKS
- EXISTING SIDEWALK REMAIN
- IMPROVEMENTS TO LEVEL LANDSCAPE, (DRAWING FOR DETAIL)
- CONVERTED PERCEPTUAL ROUTE TO BUILDING ENTRY
- PROPOSED TURN APRADING AND DROP-OFF AREA
- SEPARATELY MARK EDGE OF EXISTING TREE LINE. GIZES APPROX. 2.5 FT AND CROSSES TREE LINE THROUGH SELECTIVE REMOVAL OF EXISTING TREES.
- EXISTING NATIVE VEGETATION TO BE RETAINED.
- UPGRADING OF LANDSCAPE THROUGHOUT EXISTING AND NEW DEVELOPMENT UNDERPLANTING AND RE-DESIGN TREE PLANTING.
- NEW WATER FEATURE IN COMBINATION WITH PUBLIC ART INSTALLATION. DESIGN AND DETAILS TO DEVELOP IN NEXT PHASE.

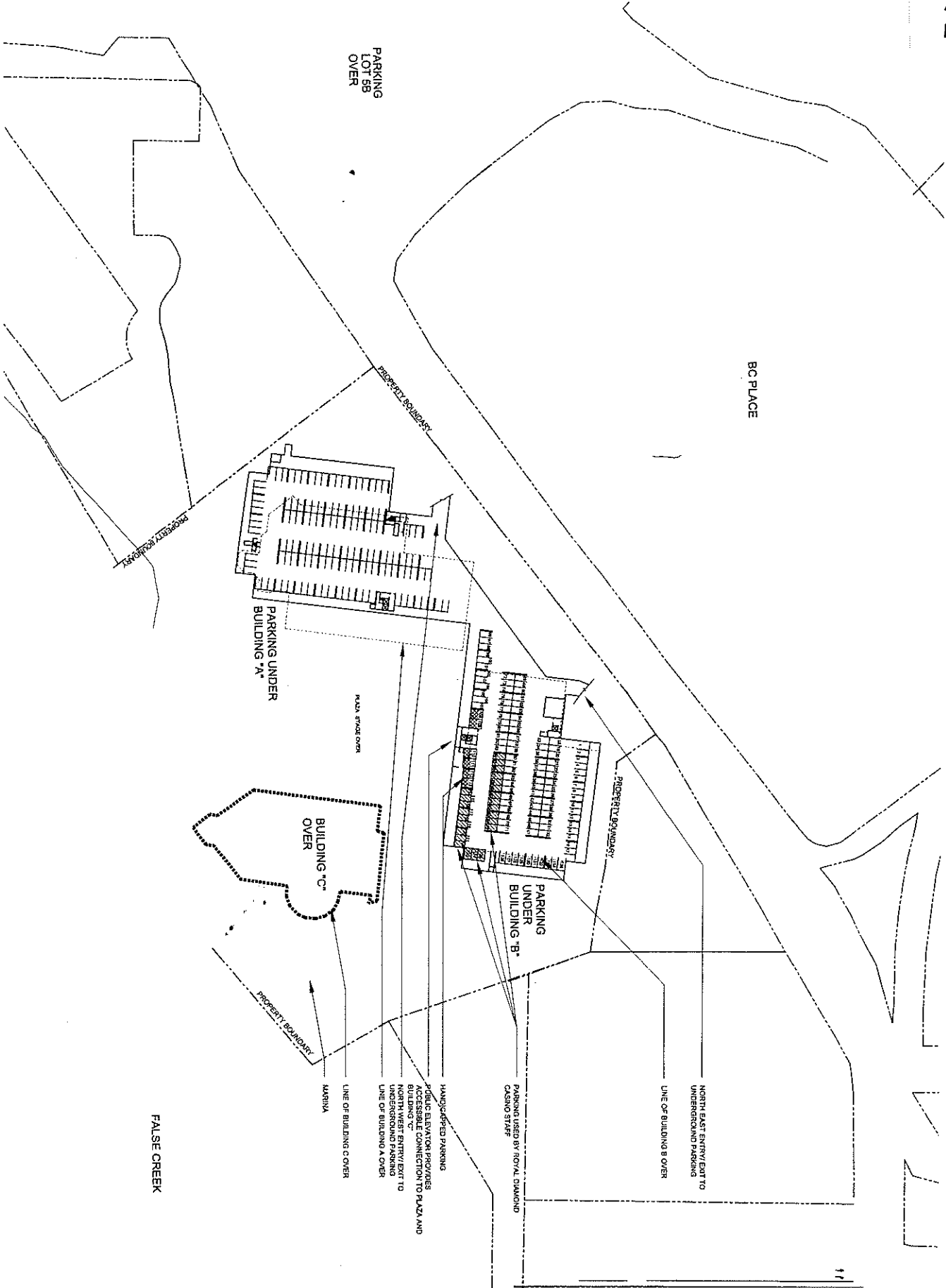
PROJECT
**INTERIOR CASINO FACILITY
 PLAZA OF NATIONS
 VANCOUVER, BC**

CLIENT
**PATRICK COTTER
 ARCHITECT INC.**

1278 BORG ST. (S.E.), VANCOUVER, B.C. V6A 2M4
 TEL: (604) 683-1152
 FAX: (604) 683-1152
 WWW.PATRICKCOTTER.COM

DATE: 15.09.2018
 DRAWN BY: [Name]
 CHECKED BY: [Name]
 SCALE: 1:500 (GENERAL)
 SHEET NO.: 001
 OF SHEETS: 001

DATE: 15.09.2018
 DRAWN BY: [Name]
 CHECKED BY: [Name]
 SCALE: 1:500 (GENERAL)
 SHEET NO.: 001
 OF SHEETS: 001



NOTES



- PARKING USED BY CASINO STAFF IN BLDG "B" (24 SPACES)
- HANDICAPPED PARKING (8 SPACES)
- TOTAL PARKING UNDER BLDG "B" = 132 SPACES, COMPENSING 50
- TOTAL PARKING ALLOCATED TO BLDG "B" CASINO STAFF = 24 SPACES
- TOTAL PARKING UNDER BLDG "B" "C" CASINO = 108 SPACES
- TOTAL PARKING UNDER BLDG "B" ALLOCATED TO OTHER BLDG "B" TENANTS = 53 SPACES
- TOTAL PARKING = 133 SPACES
- TOTAL HANDICAPPED PARKING REQUIRED FOR BLDG "C" (CASINO) = 4 SPACES
- TOTAL HANDICAPPED PARKING PROVIDED = 4 SPACES

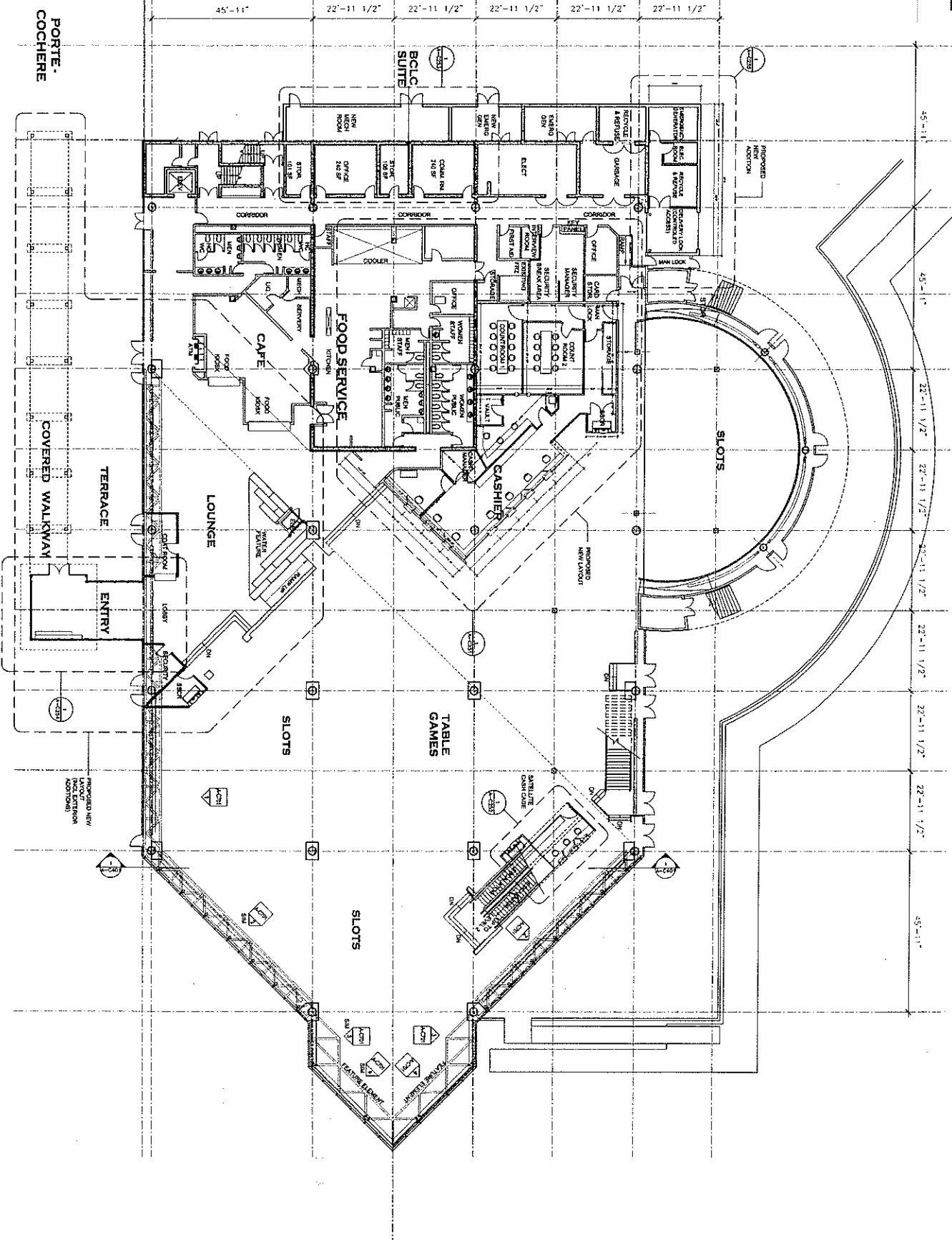
NO.	DESCRIPTION	AMOUNT	UNIT
1	TOTAL HANDICAPPED PARKING PROVIDED	4	SPACES
2	TOTAL HANDICAPPED PARKING REQUIRED FOR BLDG "C" (CASINO)	4	SPACES
3	TOTAL HANDICAPPED PARKING PROVIDED	4	SPACES
4	TOTAL HANDICAPPED PARKING REQUIRED FOR BLDG "C" (CASINO)	4	SPACES
5	TOTAL HANDICAPPED PARKING PROVIDED	4	SPACES
6	TOTAL HANDICAPPED PARKING REQUIRED FOR BLDG "C" (CASINO)	4	SPACES
7	TOTAL HANDICAPPED PARKING PROVIDED	4	SPACES
8	TOTAL HANDICAPPED PARKING REQUIRED FOR BLDG "C" (CASINO)	4	SPACES
9	TOTAL HANDICAPPED PARKING PROVIDED	4	SPACES
10	TOTAL HANDICAPPED PARKING REQUIRED FOR BLDG "C" (CASINO)	4	SPACES

PATRICK COTTER ARCHITECT INC.
 1000 WEST 10TH AVENUE
 VANCOUVER, BC V6H 1A4
 TEL: 604-681-1111
 FAX: 604-681-1112
 E-MAIL: pcotter@pcotter.com

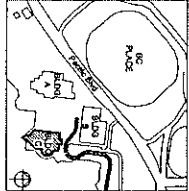
PROJECT:
**INTERIM CASINO FACILITY
 PLAZA OF NATIONS
 VANCOUVER, BC**

DATE: 10/10/10
 SCALE: 1/8" = 1'-0"
 SHEET NO.: A102
 SHEET TITLE: UNDERGROUND PARKING

DATE: 10/10/10
 SCALE: 1/8" = 1'-0"
 SHEET NO.: A102
 SHEET TITLE: UNDERGROUND PARKING



NOTES



NO.	DESCRIPTION
1	SEE PLAN FOR DIMENSIONS
2	SEE PLAN FOR DIMENSIONS
3	SEE PLAN FOR DIMENSIONS
4	SEE PLAN FOR DIMENSIONS
5	SEE PLAN FOR DIMENSIONS
6	SEE PLAN FOR DIMENSIONS
7	SEE PLAN FOR DIMENSIONS
8	SEE PLAN FOR DIMENSIONS
9	SEE PLAN FOR DIMENSIONS
10	SEE PLAN FOR DIMENSIONS

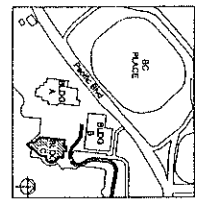
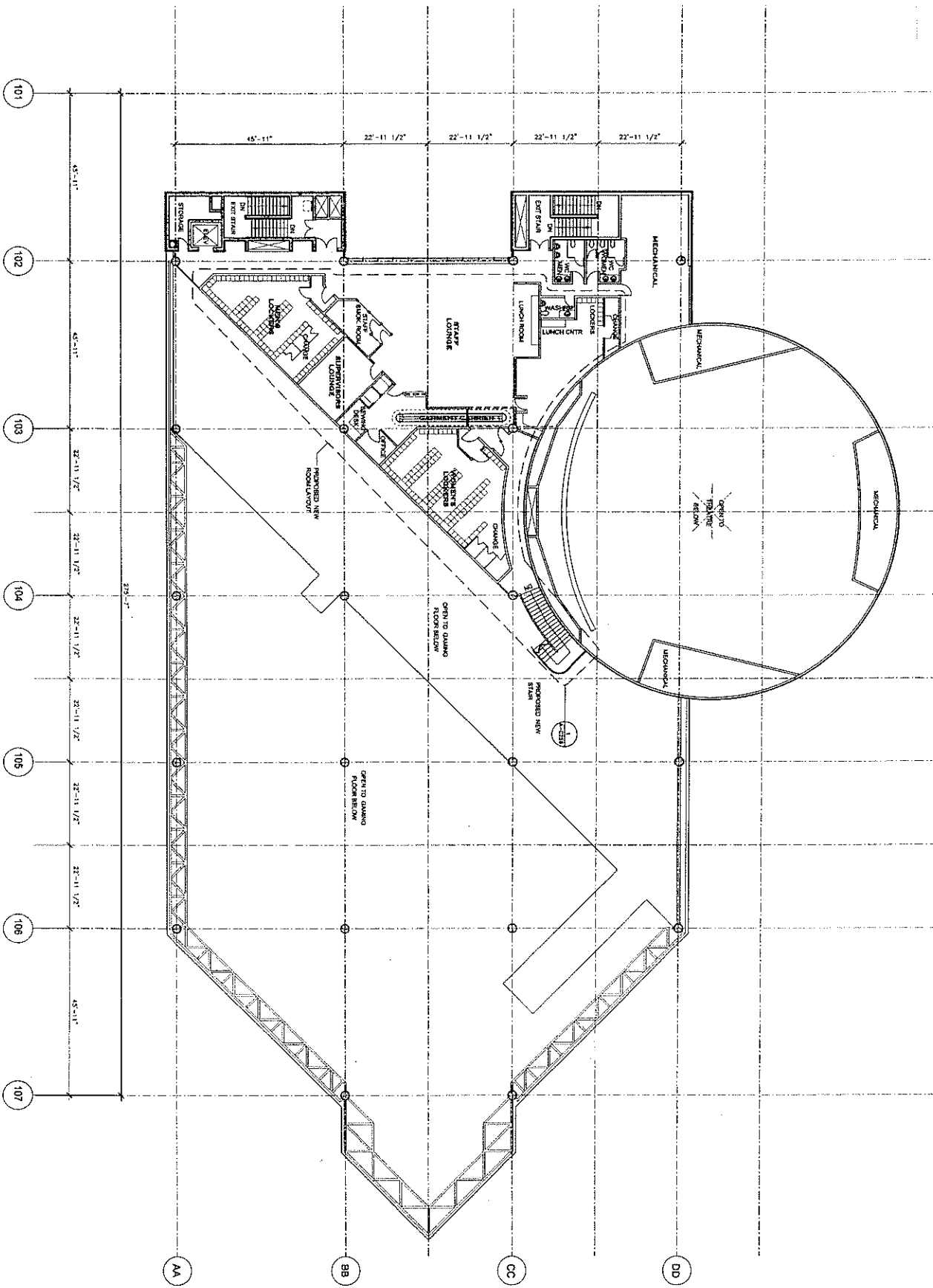
123 - 986 STREET, DELTA, BRITISH COLUMBIA
PATRICK COTTER ARCHITECT INC.
 ARCHITECTS
 TEL: 250-426-1155
 FAX: 250-426-1155
 123 - 986 STREET, DELTA, BRITISH COLUMBIA
 V4C 1A8
 CANADA

INTERIM CASINO FACILITY
 PLAZA OF NATIONS
 VANCOUVER, B.C.

DATE: 11/11/11
 DRAWN BY: [Name]
 CHECKED BY: [Name]
 SCALE: 1/8" = 1'-0"

GROUND FLOOR PLAN

PROJECT NO: A-C201
 SHEET NO: A



NOTES:

NO.	DATE	DESCRIPTION
1		
2		
3		
4		
5		
6		
7		
8		
9		
10		

PATRICK COTTEF ARCHITECT INC.
 1240 BURNHAMTHORPE RD. UNIT 101
 VANCOUVER, B.C. V6E 1A1
 TEL: (604) 271-1111
 FAX: (604) 271-1112
 E-MAIL: p.cottef@patrickcottef.com

**INTERIM CASINO FACILITY
 PLAZA OF NATIONS
 VANCOUVER, B.C.**

DATE: _____

SCALE: _____

DESIGNER: _____

CHECKED BY: _____

DATE: _____

BY: _____

PROJECT TITLE:
**THIRD FLOOR PLAN
 BUILDING 'C'**

DATE: _____

NO. _____

SCALE: _____

DESIGNER: _____

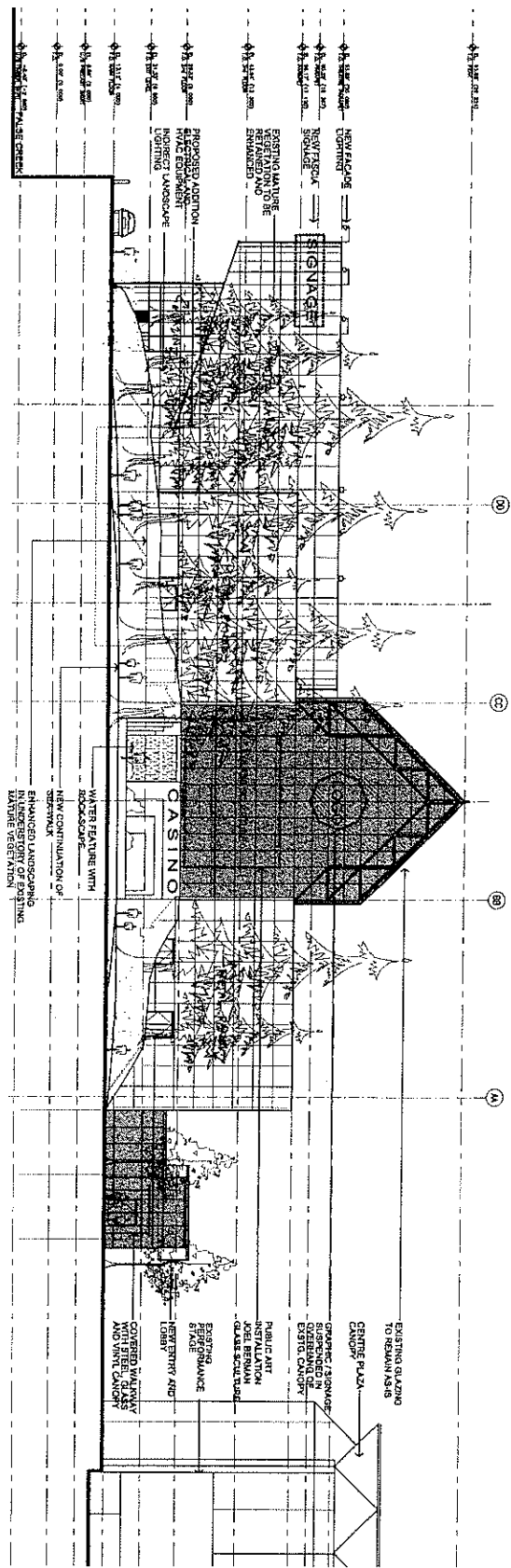
CHECKED BY: _____

DATE: _____

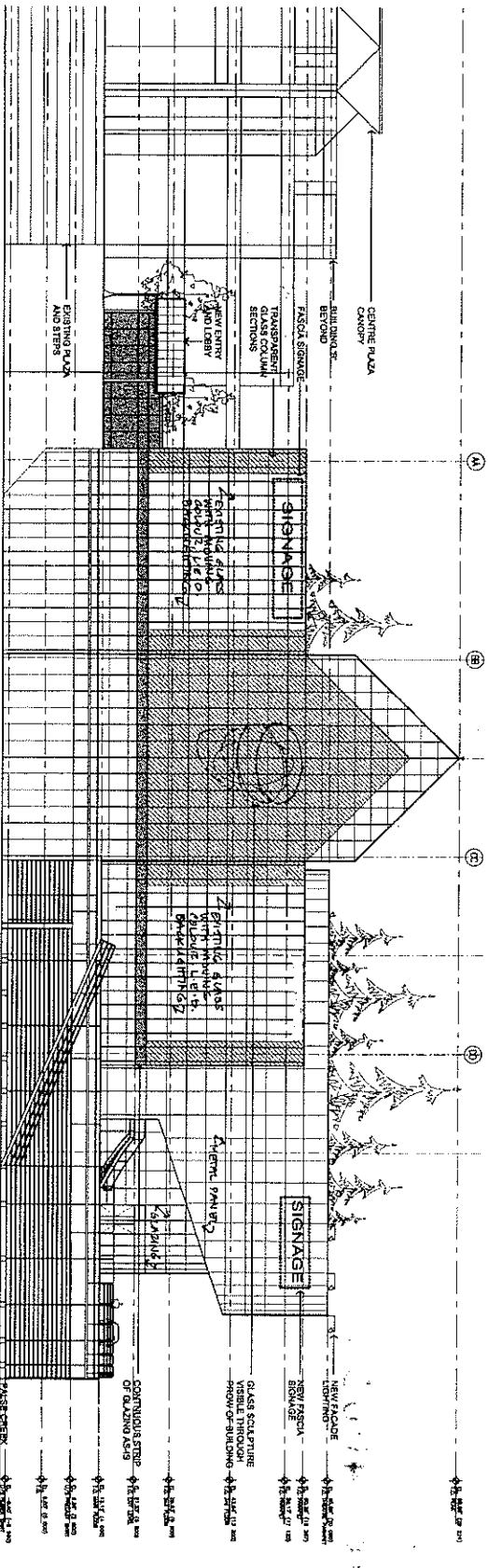
BY: _____

PROJECT NO.: **AC203**

REV: **A**

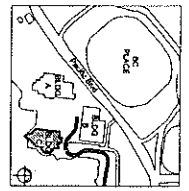


1 NORTH ELEVATION
SCALE 1"=1'-0"



2 SOUTH ELEVATION
SCALE 1"=1'-0"

NOTES



GLAZING LEGEND

- GLAZING TO REMAIN TRANSPARENT GLASS
- GLAZING WITH RETRACTABLE GLITTER TRANSPARENT IN LOW VISION CONDITIONS
- GLAZING ASS. WITH INDIRECT BACKLIGHTING

NO.	REVISION	DATE	BY	CHKD.
1				
2				
3				
4				
5				
6				
7				
8				
9				
10				

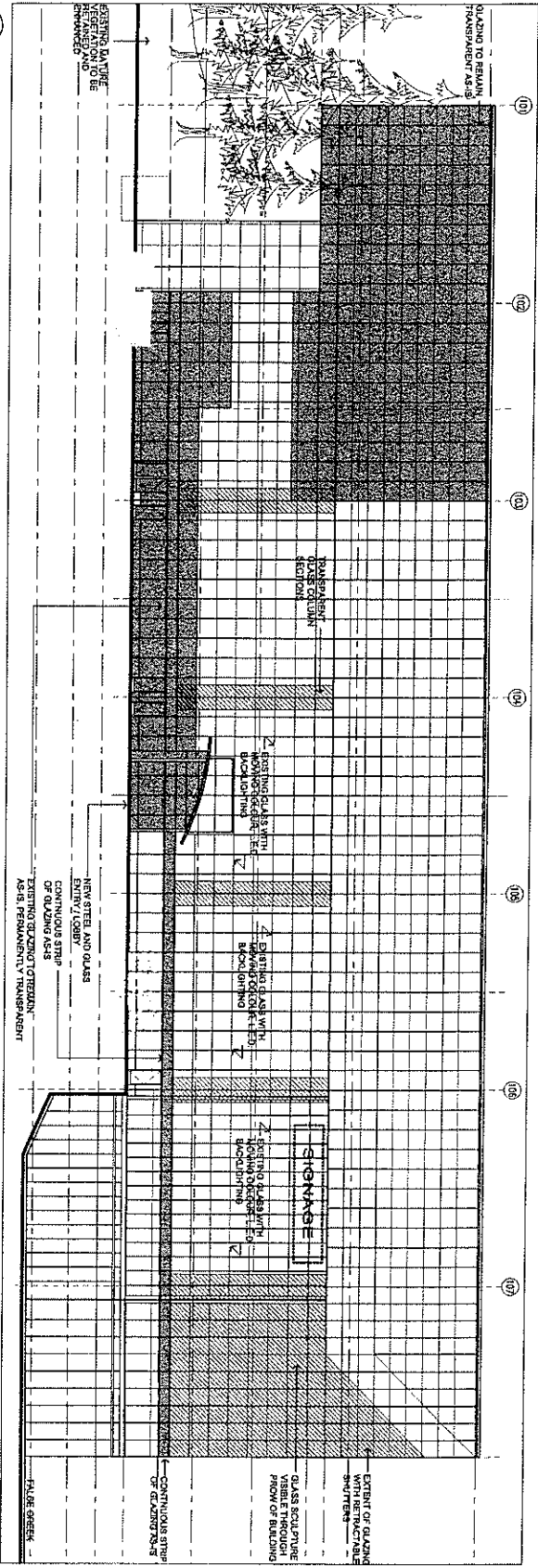
PATRICK COTTER ARCHITECT INC.
1225 - 606 STREET OFFICE, VANCOUVER, B.C.
TEL: 604-271-1111
FAX: 604-271-1112
E-MAIL: info@patrickcarter.com

INTERIM CASINO FACILITY
PLAZA OF NATIONS
VANCOUVER, B.C.

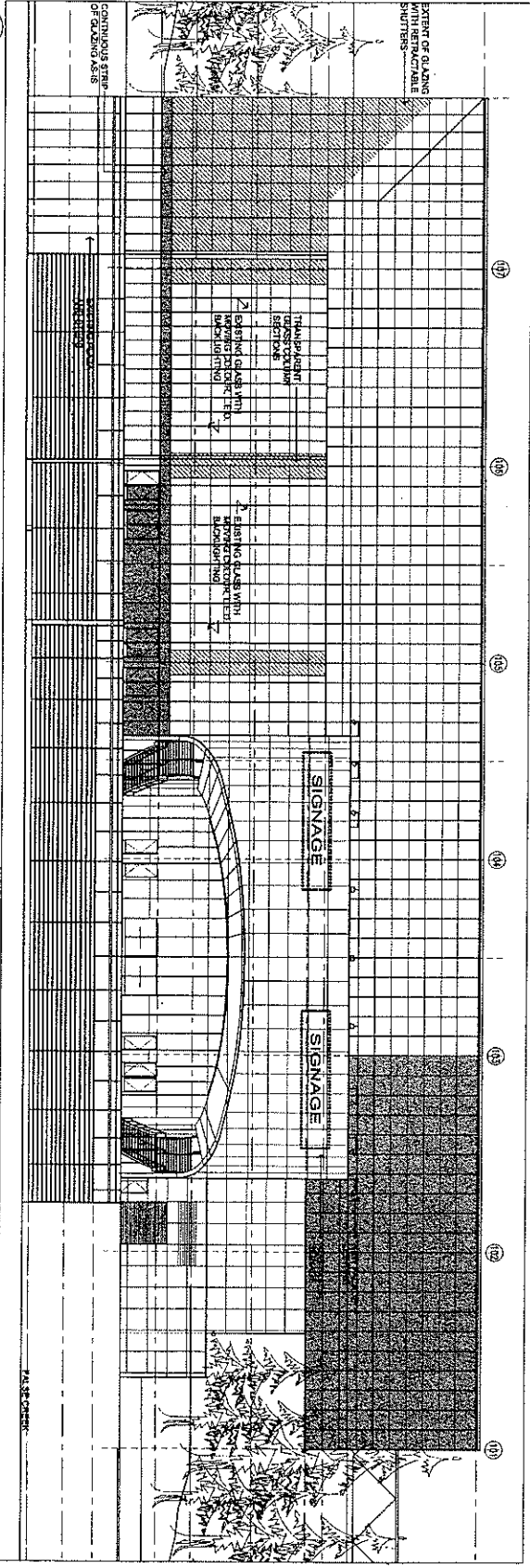
NO.	REVISION	DATE	BY	CHKD.
1				
2				
3				
4				
5				
6				
7				
8				
9				
10				

BUILDING C
NORTH AND SOUTH
EXTERIOR ELEVATIONS

A-C301 A



1 WEST ELEVATION
SCALE 1" = 12'-0"



1 WEST ELEVATION
SCALE 1" = 12'-0"

NOTES

GLAZING LEGEND

- GLAZING TO REMAIN TRANSPARENT AS-IS
- GLAZING WITH RETRACTABLE SHUTTERS IN LOW LIGHT CONDITIONS
- GLAZING AS-IS WITH INDIRECT, BROADCASTING

PATRICK COTTER ARCHITECT INC.
1234 8000 PARKWAY, SUITE 100, GASTOWN, VANCOUVER, BC V6Z 1A1
TEL: (604) 681-1111
FAX: (604) 681-1112
WWW.PATRICKCOTTERARCHITECT.COM

**ANTENNA CASINO FACILITY
PLAN OF THE
VANCOUVER, B.C.**

DATE: _____

SCALE: _____

PROJECT NO.: _____

DATE: _____

DESIGNED BY: _____

DATE: _____

DR. BY: _____

DATE: _____

REVISIONS:

1			
2			
3			
4			
5			
6			
7			
8			
9			
10			
11			
12			

A-C302 A

**BUILDING C
EAST AND WEST
EXTERIOR ELEVATIONS**