



CITY OF VANCOUVER

ADMINISTRATIVE REPORT

Date: July 06, 2004
Author: Carol Ann Young
Phone No.: 604-871-6042
RTS No.: 3986
CC File No.: 2402
Meeting Date: July 20, 2004

TO: Vancouver City Council
FROM: Director of Social Planning
SUBJECT: 2004 Childcare Grants Allocation 2 of 3

RECOMMENDATION

- A. THAT Council approve 31 Childcare Program Enhancement Grants totalling \$126,150 as listed in Appendix A, with conditions as noted; source of funds: 2004 Childcare Grants Budget, 2004 Operating Budget;
- B. THAT Council approve 31 Inner-City Childcare Sustaining Grants totalling \$232,025 as listed in Appendix A, with conditions as noted; source of funds: 2004 Childcare Grants Budgets, 2004 Operating Budget;
- C. THAT Council approve 41 Inner-City Childcare Bursary Grants totalling \$161,084 as listed in Appendix A, with conditions as noted; source of funds: 2004 Childcare Grants Budgets, 2004 Operating Budget.;
- D. THAT Council approve one Stabilization Grant totalling \$5,000 to Shannon Day Care; source of funds: 2004 Child Care Grants Budget, 2004 Operating Budget;
- E. THAT Council direct staff to review grant categories and processes and report back to Council in late 2004 with options for streamlining the administration of the Childcare Grants program.

GENERAL MANAGER'S COMMENTS

The General Manager of Community Services RECOMMENDS approval of A, B, C, D and E.

COUNCIL POLICY

Council established the annual Civic Childcare Grants Program on October 23, 1990, as part of the Civic Childcare Strategy. The overall objectives of this grant program are:

- to support the viability, accessibility and quality of existing childcare services;
- to assist childcare initiatives in high need areas;
- to encourage and support efficient, coordinated administrative services required for a childcare system in Vancouver;
- to lever other sources of childcare funding whenever possible.

Council approved "Moving Forward" - Childcare: A Cornerstone of Childhood Development in April, 2002, which set out a strategic plan for childcare and child development services for the City.

In April, 2004, Council approved the 2004 Operating Budget, which included an adjustment that limited the inflationary increase for the City grants programs to 2%. It also approved the continuation of the Childcare Bursary (Subsidy) Grant of \$165,000. Consequently, the 2004 budget for Civic Childcare Grants is \$886,400.

Approval of grant recommendations requires eight affirmative votes.

SUMMARY

This report recommends the allocations for the Civic Childcare Grants, specifically the Inner City Sustaining Grant, Bursary Grant, Program Enhancement Grant and Program Stabilization Grant. These operating grants assist programs in inner city that serve a population of high need children and/or low income families. Funding is provided on an annual basis to offset the cost of fees, extra staff ration, quality enhancement, co-ordinated administration and food programs

The report also recommends a review of the existing Civic Childcare Grant programs with a view to streamlining the administration requirements of programs for the grant application and reporting purposes.

PURPOSE

This report makes recommendations for the following Childcare Grant categories:

- Childcare Program Enhancement
- Inner-City Childcare Sustaining
- Inner City Bursary Grant
- Stabilization Grant

This is the second of three reports regarding the 2004 Childcare Grants Program.

The report also recommends a review of existing grant categories and processes and requests that staff report back in late 2004 with a strategy for a direct operating grant.

BACKGROUND

Last year, Council approved an allocation for the 2003 Childcare Grants as follows:

- Program Enhancement grants - \$123,077;
- Inner-City Childcare Sustaining grants - \$258,035;
- Inner-City Bursary grants - \$162,500.

DISCUSSION

The focus of this report is on the Childcare Grants Program - Program Enhancement, Inner-City Sustaining and Bursary grant categories. Demand for all grants funding continues to exceed budget allocations. This year, a total of \$256,580 was requested in the Enhancement Grant category, \$374,261 in the Inner City Grant and \$178,948 in the Inner City Bursary category. The maximum eligible amounts are: Program Enhancement Grant - \$10,500, Inner City Grant \$12,750 and Bursary Grant \$28 per child for 11 months based on the difference between enrolment and capacity plus 20% of the licensed capacity. Grant funding will support an estimated 2,000 spaces in 51 childcare programs. The growing demand for funding is clearly a result of Provincial funding and policy changes and the historic shortfall of adequate funding for affordable childcare.

Successful applications came from organizations serving high need families and/or providing high need services such as infant/toddler care. As in previous years, Social Planning has chosen to make recommendations which stretch the City dollars for the benefit of as many families and children as possible. However, this year, three Inner City, three Bursary and one Program Enhancement grant applications were deemed ineligible as they did not meet the grant criteria. Some applicants were eligible for all grant categories funding.

GRANT REVIEW PROCESS:

The grant review process this year included a review of all applications for completeness, and site visits/interviews, which were conducted by the Childcare Co-ordinator and a Social Planner. A grant review team, comprised of a licensing officer, a nutritionist from the Vancouver Regional Health Authority and Social Planning staff, was established. All menu plans for food programs were reviewed by the Vancouver Regional Health Authority nutritionists for nutritional value and improvement from last year's menus, prior to the review team meeting. The review team established weighting based on size and type of programs, financial reporting, wages, administration costs, fees in relation to city average, profiles and completion of previous year's conditions. The three grant categories are described below.

1. Program Enhancement Grants

The purpose of these grants (maximum \$10,500 per organization) is to provide non-profit, licensed childcare programs with funds to enhance the quality of care offered. This initiative

is related to assisting infant and toddler programs, serving low/modest income families, strengthening coordinated administration and quality initiatives.

In total, 32 Enhancement grant applications were received. All applications, except one, were determined to be eligible for funding. The one deemed ineligible did not meet the funding criteria. Social Planning is recommending approval of 31 Program Enhancement Grants for a total of \$126,150 (see Appendix A).

2. Inner-City Childcare Sustaining Grants

The purpose of these grants is to provide non-profit organizations with up to \$12,750 to offset costs related to food supplement programs, maintaining child/staff ratios and keeping parent fees below City average. The majority of grant applications for Inner-City funding were for keeping fees low and for food supplement programs.

Programs eligible for Inner-City funding, are considered to have met the Program Enhancement Grant criteria and, in addition, operate a childcare program located in or immediately adjacent to an Inner-City school project, or clearly stand out as serving high need, low income families and are working closely with neighbourhood agencies to meet the needs of Inner-City families. A significant number of the children attending these programs have been designated as "at risk" by the Ministry for Children and Family Development or require extra family support and/or are considered to be living in high need environment.

Thirty-four childcare programs applied for funding under the Inner-City Grant category. Three applicants were deemed ineligible for Inner-City Grant funding, as they did not meet the grant criteria.

Social Planning recommends approval of 31 Inner-City Childcare Sustaining grants for a total of 232,025 (see Appendix A).

1. Inner City Bursary Grants

The purpose of these grants is to provide fee assistance to low income families to retain and increase enrolment and bring back families that have left programs due to affordability. The grant is calculated using the difference between enrolment and licensed capacity plus 20% of the licensed spaces multiplied by \$28 per space for eleven months. Programs are required to have an internal subsidy policy for administering this grant.

Forty-four programs applied for Bursary Grants. Three were deemed ineligible, as they did not meet the grant criteria. A number of programs indicated that this grant program made a big difference to families' ability to afford care and/or organization's ability to retain childcare spaces. Social Planning recommends approval of 41 Inner-City Childcare Bursary Grants for a total of \$161,084 (see Appendix A)

GRANT VISITS

The Child Development Coordinator and a Social Planner visited all of the organizations that applied for Inner City grants. As part of the visits, staff and board members from the respective organizations were asked to share any trends, themes, issues or challenges they have experienced over the past year. Program operators articulated a number of challenges;

these included issues with subsidy, food and financial viability. Each issue is summarized below.

Subsidy

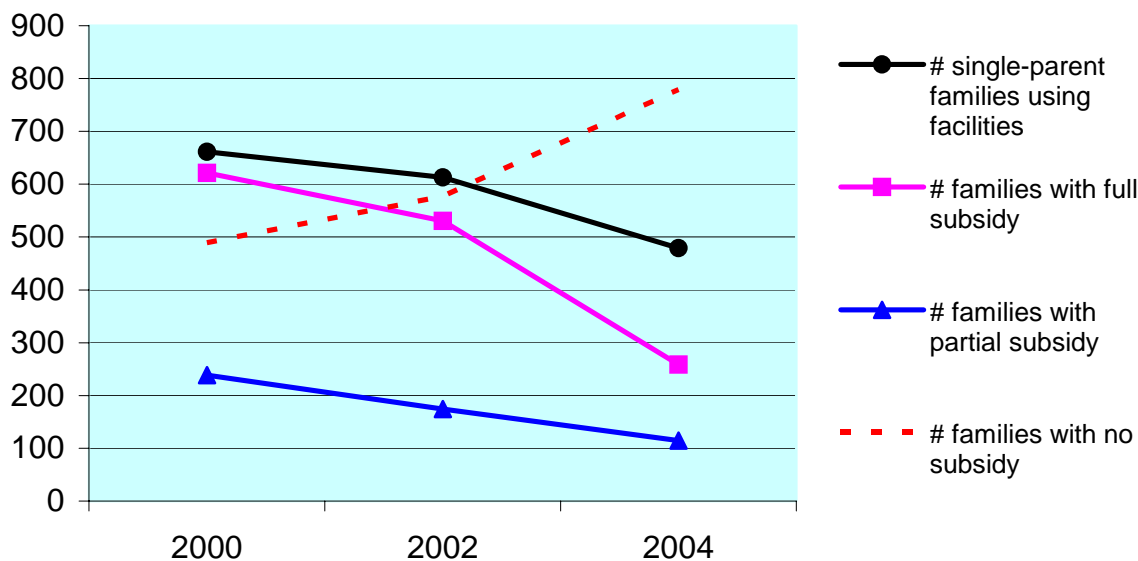
A number of programs spoke of long delays by the Ministry of Human Resources employment assistance workers in receiving authorization for subsidy payments on behalf of families. This meant that programs were serving families for three and four months without confirmation of payment from the Province, often to find out a family was deemed ineligible, thus leaving the program to cover the bad debt. Many families had to reapply for subsidy every three months, some monthly, finding out that case workers had changed, were poorly informed about files or had lost files, requiring families to begin the application process all over again. A number of programs indicated that families found the subsidy offices inaccessible, either geographically or linguistically, and noted a significant loss since the elimination of the One-Stop Access workers (staff at Westcoast Child Care Resource Centre worked in community hubs to assist families with applications and seeking subsidy).

As one program illustrated, a mom with two young children would come to the neighbourhood house to complete her subsidy application, in her native language, with the One-Stop Access worker. She could use the clothing exchange and find out about other support programs. Now she has to take the children on the bus to the "welfare office" and line up to see a worker who is unable to support her in her first language.

Programs indicated that the subsidy situation has worsened and noted that there is a growing turnover in children within the programs. They also reported that they are getting an increased number of calls from parents with three year olds who are required to return to work and are seeking quality affordable childcare. This is extremely challenging for a single parent returning to work when the city-wide average fee for a three to five year old is \$570 per month and the maximum subsidy is \$368 (1997 rate), a difference of \$202.

Social Planning has been tracking the subsidy impacts and profiles in a number of Inner City programs (since April, 2002). The line graph on the following page clearly demonstrates a significant change in the profile of families able to access licensed childcare as a result of affordability. The number of families with no subsidy has increased, while the number of families with partial or full subsidies has decreased. This is exacerbated by the decrease in the number of single parent families accessing childcare. As the percentage of families on subsidy has typically been used as a measure of inner city standing, such a change has required staff to revisit profiling for grant purposes.

SUBSIDY TRENDS IN CHILD CARE 25 Vancouver facilities - 2000 to 2004



Food

Inner City Childcare programs often provide the main daily nutritious meal for children in their care. Hot lunch programs, snacks and, in some cases, breakfast is provided. City grants funding helps offset the costs of food and/or cook wages. For the first time this year, programs reported having to use the food bank as a source of food for the hot lunch and snack program. This has been problematic as the quality of food, in some cases, has been questionable (e.g. expired products, spoiled produce).

Financial Viability

A number of programs indicated a growing fragility in their financial stability. The new Provincial operating grant is tied to enrolment, not licensed capacity and, as such, under enrolled programs are receiving less Provincial funding. Combined with the subsidy reductions, this has increased the financial instability of programs. In addition, programs expressed concern that the operating grant is not available for statutory holidays; however, programs are still required to pay staffing costs.

It is interesting to note that three grant applications were received from programs not in the inner city but who were experiencing some of the same challenges as those in the inner city (e.g., low income families ineligible for subsidy or able to pay fees, loss of Provincial income).

Administration

Finally, programs indicated that the administrative detail required to report daily enrolment for Provincial funding was onerous and that there was no funding for staff time to do reporting.

Programs also emphasize the challenges and time required to provide monthly reporting for the Inner City Bursary Grant and requested more flexibility in the administration of the grant. Overall, programs suggested that while the financial and profile reporting was helpful, a move to a direct operating grant would be preferable.

Social Planning staff would like to review the grant process over the next six months, host a series of focus groups with grant recipients and report back to Council in late 2004 with a strategy for streamlining childcare grants. This could improve administrative time requirements, increase accountability, and create greater equity and consistency from year to year. Staff are recommending a report back to Council in the late 2004 on the feasibility and options for streamlining the childcare grants.

4. Stabilization Grant

The Stabilization Grant is allocated to programs that have experienced significant hardship and may need one-time assistance to increase viability. During the grant visits, staff met with Board and program staff at Shannon Day Care, a 25-space program for toddlers and children 3 to 5 years, located in a City amenity space in Marpole. Shannon Day Care was particularly impacted by subsidy changes over the last year and lost, at one point, 50% of its enrolment. It has been building enrolment over the past year; however, it has experienced a significant loss of revenue from parent fees and the Provincial operating grants.

Staff are recommending that Shannon Day Care receive the \$5,000 stabilization grant this year.

FINANCIAL IMPLICATIONS

The 2004 Operating Budget for Civic Childcare Grants is \$886,400, with \$523,600 proposed to be allocated for Inner-City Sustaining, Program Enhancement Grants and Inner City Bursary Grants. The proposed operating budget also includes \$5,000 for a Program Stabilization grant. This report recommends the disbursement of \$126,150 for the Program Enhancement Grants, \$232,025 for the Inner-City Sustaining Grants, \$161,084 for the Inner City Bursary Grants (as listed in Appenndix A) and \$5,000 for a Stabilization Grant.

Program	2004 Proposed	2004 Recommendations
Program Enhancement	\$128,150*	\$126,150
Inner City Sustaining	\$230,450**	\$232,025
Inner City Bursary	\$165,000	\$161,084
Program Stabilization	\$ 5,000	\$ 5,000
Program Development	\$ 5,000	\$ 0
Research & Innovation	\$ 14,500	\$ 0
City-Wide/Administration of City-Owned	\$338,300	\$338,300
Total Allocations	\$886,400	\$862,559
Remaining Funds		\$ 23,841

* Earlier report suggested that food supplement programs be moved to the Program Enhancement Grant category; however, staff retained food funding in the Inner City Grant category, and as such, the Program Enhancement category was reduced.

** Inner City grant retained food category and funding was increased.

CONCLUSION

This is the second of three reports related to the allocation of the 2004 Childcare Grants. Social Planning is recommending Council approval for:

- Program Enhancement grants - \$126,150
- Inner-City Childcare Sustaining grants - \$232,025
- Inner-City Bursary Grant - \$161,084
- Stabilization Grant - \$5,000.

This grant funding will support over 2,000 childcare spaces in 51 childcare programs. This leaves a balance of \$23,841 in the Childcare Grants budget for allocation later this year.

In addition, staff recommend a review of the Childcare Grants program, with a report back to Council in late 2004, with recommendations for streamlining the administration of the Childcare Grants program.

- - - - -

Recommendations for the 2004 Childcare Program Enhancement, Inner-city Sustaining Grants and Inner-city Bursary Grants								
Licensee/Childcare Centre	Enhance Grant Request	Enhance Grant Recom	Inner-city Grant Request	Inner-city Grant Recom	Bursary Grant Request	Bursary Grant Recom	Initiative	Childcare Centre Profile/ / Comments & Conditions
<p>Brant Villa Day Care Society - Learning Tree Day Care</p> <p>Group Care for 3 - 5 year olds Licensed Capacity: 25 spaces Enrolment: 25 children</p>	0	0	\$12,750	\$6,375	\$1,540	\$1,540	<p><i>Inner-City Sustaining Grant:</i> to keep parent fees below city-wide average and provide a food supplement program</p> <p><i>Inner-City Bursary Grant:</i> for 5 spaces</p>	<p>Serves: East Vancouver Significant % of single parent families and children with extra support needs; high % of families receiving MCFD child care subsidy; and operated by a parent-run Board</p> <p>CONDITION: Menu Improvements - ensure two food groups for snack and less use of juice, fruit leather and marshmallows</p>
<p>Britannia Community Services Centre Society/Boat Day Care Society - Boat Day Care Centre</p> <p>Group Care for 3 - 5 year olds Licensed Capacity: 25 spaces Enrolment: 25 children</p>	\$7,000	\$5,250	0	0	0	0	<p><i>Program Enhancement Grant:</i> to strengthening administration through the community hub model</p>	<p>Serves: East Vancouver High % of single parent families and families receiving MCFD child care subsidy; and operated by a parent-run Board & multi-service agency Board (management contract for administration services with Britannia Community Services Society)</p>
<p>Britannia Community Services Centre Society - Britannia Child Care Centre Nursery School - Preschool</p> <p>Preschool Licensed Capacity: 25 spaces (x 2 classes - a.m. & p.m.) Enrolment: 65 children</p>	0	0	0	0	\$1,540	\$3,080	<p>Inner-City Bursary Grant: for 10 spaces</p>	<p>Serves: Grandview-Woodlands neighbourhood; operated by a multi-service agency</p>
<p>Britannia Community Service Centre Society - Britannia Child Care Centre Out of School</p> <p>School-aged Care for 6 to 12 year olds School-aged Care Licensed Spaces: 70 spaces Enrolment: 48 children</p>	\$10,500	\$5,250	\$12,750	\$9,565	\$11,088	\$11,088	<p><i>Program Enhancement Grant:</i> To strengthen coordinated administration through the community hub model</p> <p><i>Inner-City Sustaining Grant:</i> for food supplement program</p> <p><i>Inner-City Bursary Grant:</i> 36 spaces</p>	<p>Serves: Grandview-Woodlands neighbourhood High % of single parent families, aboriginal children and families receiving MCFD childcare subsidy; significant % of children with extra support needs; and operated by a multi-service agency</p> <p>Comment: Good menu plan</p>

Recommendations for the 2004 Childcare Program Enhancement, Inner-city Sustaining Grants and Inner-city Bursary Grants								
Licensee/Childcare Centre	Enhance Grant Request	Enhance Grant Recom	Inner-city Grant Request	Inner-city Grant Recom	Bursary Grant Request	Bursary Grant Recom	Initiative	Childcare Centre Profile/ / Comments & Conditions
<p>Britannia Community Services Centre Society/ Eagles in The Sky Association - Eaglets Part-Time Daycare</p> <p>Half Day Group Care for 3 - 5 year olds Licensed Capacity: 25 spaces Enrolment: 11 children</p>	0	0	\$12,750	\$9,565	\$4,312	\$5,852	<p><i>Inner-City Sustaining Grant:</i> for food supplement program</p> <p><i>Inner-City Bursary Grant:</i> 19 spaces</p>	<p>Serves: Grandview-Woodlands and Hastings-Sunrise neighbourhoods (MacDonald Elementary School Catchment area)</p> <p>Significant % of single parent families, children who speak English as an additional language, children from refugee or immigrant families, aboriginal children and children with extra support needs; High % of families receiving MCFD child care subsidy; and operated by parent-run Board & multi-service agency Board (management contract for administration services with Britannia Community Services Society)</p> <p>Comment: Good snack menu</p>
<p>Britannia Community Services Centre Society/ Eagles In The Sky Association - Eagles in the Sky - Kidzone Out of School Care</p> <p>School-aged Care for 6 to 12 year olds Licensed Capacity: 45 spaces Enrolment: 33 children</p>	\$8,000	\$4,200	0	0	\$8,008	\$6,468	<p><i>Program Enhancement Grant:</i> To strengthen coordinated administration through the community hub model</p> <p><i>Inner-city Bursary Grant:</i> 21 spaces</p>	<p>Serves: Grandview-Woodlands and Hastings-Sunrise (MacDonald Elementary Catchment area)</p> <p>Significant % of single parent families and children with extra support needs; High % of aboriginal children and families receiving MCFD child care subsidy; and operated by a parent-run Board & multi-service agency Board (management contract for administration services with Britannia Community Services Society)</p>
<p>Britannia Community Services Centre Society/ Grandview Terrace Childcare Society - Grandview Terrace Child Care Centre</p> <p>Group Care for 3 - 5 year olds Licensed Capacity: 25 spaces Enrolment: 28 children</p>	\$10,500	\$5,250	\$12,750	\$6,375	\$1,540	\$1,540	<p><i>Program Enhancement Grant:</i> To strengthen coordinated administration through the community hub model</p> <p><i>Inner-city Sustaining Grant:</i> for food supplement program</p> <p><i>Inner-city Bursary Grant:</i> 5 spaces</p>	<p>Serves Grandview-Woodlands area (Grandview/?uuqinak' uuh Elementary School catchment area)</p> <p>High % of single parent families, aboriginal children, children with extra support needs and families receiving MCFD child care subsidy; and operate by a parent-run Board & multi-service agency Board (management contract for administration services with Britannia Community Services Society)</p> <p>CONDITION: Menu improvements - serve more milk and protein</p>
<p>Britannia Community Services Centre Society/ Grandview Terrace Childcare Society - Grandview Terrace Out of School Care</p> <p>School-aged Care for 6 to 12 year olds Licensed Capacity: 50 spaces Enrolment: 51 children</p>	0	0	0	0	\$3,080	\$3,080	<p><i>Inner-city Bursary Grant:</i> 10 spaces</p>	<p>Serves Grandview-Woodlands area (Grandview/?uuqinak' uuh Elementary School catchment area)</p> <p>High % of single parent families, aboriginal children, children with extra support needs and families receiving MCFD child care subsidy; and operated by a parent-run Board & multi-service agency Board (management contract for administration services with Britannia Community Services Society)</p>

Recommendations for the 2004 Childcare Program Enhancement, Inner-city Sustaining Grants and Inner-city Bursary Grants								
Licensee/Childcare Centre	Enhance Grant Request	Enhance Grant Recom	Inner-city Grant Request	Inner-city Grant Recom	Bursary Grant Request	Bursary Grant Recom	Initiative	Childcare Centre Profile/ / Comments & Conditions
<p>Britannia Community Services Centre Society / Lord Nelson School Child Care Society - Lord Nelson Out of School Care School-aged Care for 6 to 12 year olds Licensed Capacity: 30 spaces Enrolment: 34 children</p>	\$3,770	\$3,770	0	0	0	0	<p><i>Program Enhancement Grant:</i> To strengthen coordinated administration through the community hub model</p>	<p>Serves Grandview-Woodlands area (Lord Nelson Elementary School catchment area) Significant % of single parent families, children who speak English as an additional language, children from refugee and immigrant families and children with extra support needs, and families who receive MCFD child care subsidy; and operated by a parent-run Board & multi-service agency Board (management contract for administration services with Britannia Community Services Society)</p>
<p>Britannia Community Services Centre Society/ Mount Pleasant Child Care Society - Mount Pleasant Child Care Centre Group Care for 3 - 5 year olds Licensed Capacity: 37 spaces including 12 toddler & 25 (3 to 5 year olds) Enrolment: 32 children</p>	\$10,500	\$5,250	\$12,750	\$6,375	\$3,696	\$3,696	<p><i>Program Enhancement Grant:</i> to strengthen coordinated administration through the community hub model</p> <p><i>Inner-city Sustaining Grant:</i> for a food supplement program</p> <p><i>Inner-city Bursary Grant:</i> 12 spaces</p>	<p>Serves: Mount Pleasant area Significant % of single parent families, children with extra support needs and High % of families receiving childcare subsidy; and operate by a multi-service agency Board</p> <p>CONDITION: Menu improvements - provide more protein in menu plan and serve 3 food groups at snack</p>
<p>Cedar Cottage Neighbourhood Services - Cedar Cottage Out of School Care School-aged Care for 6 to 12 year olds Licensed Capacity: 185 spaces Enrolment: 193 children</p>	\$10,500	\$5,250	\$12,750	\$3,190	0	0	<p><i>Program Enhancement Grant:</i> To strengthen coordinated administration through the community hub model</p> <p><i>Inner-city Sustaining Grant:</i> for food supplement program</p>	<p>Serves: Kensington/Cedar-Cottage area (Charles Dickens, Lord Beaconsfield, Queen Alexandra, Lord Selkirk and Laura Secord Elementary Schools) Depending on location of the out of school care program childcare centre profiles vary from serving High to Significant percentages of single parent families, children who speak English as a second language, children who speak no English, children from refugee and immigrant families, aboriginal children and families in receiving MCFD child care subsidy and operated by a multi-service agency</p> <p>Comment: Good menu plan</p>
<p>Cedar Cottage Neighbourhood Services - Cedar Cottage Preschool Preschool Licensed Capacity: 20 spaces x5 classes=100 spaces Enrolment: 98 children</p>	0	0	0	0	\$6,776	\$6,776	<p><i>Inner-city Bursary Program:</i> 22 spaces</p>	<p>Serves: Kensington/Cedar-Cottage area High % of children who speak English as a second language, children who speak no English, and children from refugee and immigrant families; and operated by a multi-service agency</p>

Recommendations for the 2004 Childcare Program Enhancement, Inner-city Sustaining Grants and Inner-city Bursary Grants								
Licensee/Childcare Centre	Enhance Grant Request	Enhance Grant Recom	Inner-city Grant Request	Inner-city Grant Recom	Bursary Grant Request	Bursary Grant Recom	Initiative	Childcare Centre Profile/ / Comments & Conditions
Collingwood Neighbourhood House Society - Duke Street Preschool Preschool Licensed Capacity: 40 spaces Enrolment: 40 children	0	0	0	0	\$1,232	\$2,464	<i>Inner-city Bursary Grant: 8 spaces</i>	Serves: Renfrew-Collingwood area High % of children who speak English as an additional language and children from refugee and immigrant families; and operated by a multi-service agency
Collingwood Neighbourhood House Society - Duke Street Child Care Centre Group Care Group Care for 3 - 5 year olds Licensed Capacity: 25 spaces Enrolment: 25 children	0	0	0	0	\$1,540	\$1,540	<i>Inner-city Bursary Grant: 5 spaces</i>	Serves: Renfrew-Collingwood area High % of children who speak English as a second language and Significant % of families who receive MCFD child care subsidy; and operated by a multi-service agency
Collingwood Neighbourhood House Society - Sarah House Child Care Centre Group Care for 3 - 5 year olds Licensed Capacity: 25 spaces Enrolment: 24 children	0	0	0	0	\$1,848	\$1,848	<i>Inner-city Bursary Grant: 6 spaces</i>	Serves Renfrew-Collingwood area High % of children who speak English as an additional language and children from refugee and immigrant families; and Significant % of families receiving child care subsidy; and operated by a multi-service agency
Collingwood Neighbourhood House Society - Duke Street Child Care Centre - School Age School-aged Care for 6 to 12 year olds Licensed Capacity: 20 spaces Enrolment: 20 children	\$1,114	\$1,114	\$1,285	\$1,285	\$1,232	\$1,232	<i>Program Enhancement Grant: To strengthen coordinated administration through the community hub model + CQI</i> <i>Inner-city Sustaining Grant: to keep parent fees below the city-wide average and for a food supplement program</i> <i>Inner-city Bursary Grant: 4 spaces</i>	Serves: Renfrew-Collingwood area High % of children who speak English as an additional language and children from refugee and immigrant families; and operated by a multi-service agency Comment: Good menu plan CONDITION: CQI*
Collingwood Neighbourhood House Society - Collingwood-Carleton Out of School Care School-aged Care for 6 to 12 year olds Licensed Capacity: 30 spaces Enrolment: 30 children	\$1,114	\$1,114	\$1,285	\$1,285	\$1,848	\$1,848	<i>Program Enhancement Grant: To strengthen coordinated administration through the community hub model + CQI</i> <i>Inner-city Sustaining Grant: to keep parent fees below the city-wide average and for a food supplement program</i> <i>Inner-city Bursary Grant: 6 spaces</i>	Serves: Renfrew-Collingwood area Significant % of children from single parent families, children who speak English as an additional language and children from refugee and immigrant families, with extra support needs; and operated by a multi-service agency Comment: Good menu plan CONDITION: CQI*

Recommendations for the 2004 Childcare Program Enhancement, Inner-city Sustaining Grants and Inner-city Bursary Grants								
Licensee/Childcare Centre	Enhance Grant Request	Enhance Grant Recom	Inner-city Grant Request	Inner-city Grant Recom	Bursary Grant Request	Bursary Grant Recom	Initiative	Childcare Centre Profile/ / Comments & Conditions
Collingwood Neighbourhood House Society - Collingwood Kindercare School-aged Care for 5 year olds Licensed Capacity: 16 spaces Enrolment: 16 children	\$1,114	\$1,114	\$1,285	\$1,285	\$924	\$924	<p><i>Program Enhancement Grant:</i> To strengthen coordinated administration through the community hub model + CQI</p> <p><i>Inner-city Sustaining Grant:</i> to keep parent fees below the city-wide average and for a food supplement program</p> <p><i>Inner-city Bursary Grant:</i> 3 spaces</p>	<p>Serves: Serves: Renfrew-Collingwood area Significant % of children from single parent families, and families receiving MCFD child care subsidy; and operated by a multi-service agency</p> <p>Comment: Good menu plan</p> <p>CONDITION: CQI*</p>
Collingwood Neighbourhood House Society - Collingwood Grenfell School Aged Child Care School-aged Care for 6 to 12 year olds Licensed Capacity: 30 spaces Enrolment: 30 children	\$1,114	\$1,114	\$1,285	\$1,285	\$1,848	\$1,848	CQI	<p>Serves: Serves: Renfrew-Collingwood area Significant % of children from single parent families, children from refugee and immigrant families and families receiving MCFD child care subsidy; High % of children who speak English as an additional language; and operated by a multi-service agency</p> <p>Comment: Good menu plan</p> <p>CONDITION: CQI*</p>
Collingwood Neighbourhood House Society - Collingwood-Graham Bruce School Age Program School-aged Care for 6 to 12 year olds Licensed Capacity: 30 spaces Enrolment: 30 children	\$1,114	\$1,114	\$1,285	\$1,285	\$1,848	\$1,848	<p><i>Program Enhancement Grant:</i> To strengthen coordinated administration through the community hub model + CQI</p> <p><i>Inner-city Sustaining Grant:</i> to keep parent fees below the city-wide average and for a food supplement program</p> <p><i>Inner-city Bursary Grant:</i> 6 spaces</p>	<p>Serves: Serves: Renfrew-Collingwood area Significant % of children from single parent families, children who speak English as an additional language, and families receiving MCFD child care subsidy; and operated by a multi-service agency</p> <p>Program Enhancement Grant: To strengthen coordinated administration through the community hub model</p> <p>Inner-city Sustaining Grant: to keep parent fees below the city-wide average and for a food supplement program</p> <p>Inner-city Bursary Grant: 6 spaces</p> <p>Comment: Good menu plan</p> <p>CONDITION: CQI*</p>

Recommendations for the 2004 Childcare Program Enhancement, Inner-city Sustaining Grants and Inner-city Bursary Grants								
Licensee/Childcare Centre	Enhance Grant Request	Enhance Grant Recom	Inner-city Grant Request	Inner-city Grant Recom	Bursary Grant Request	Bursary Grant Recom	Initiative	Childcare Centre Profile/ / Comments & Conditions
<p>Developmental Disabilities Association - Waterside Childcare Centre Toddler Care for under 36 months & Group Care for 3 - 5 year olds</p> <p>Licensed Capacity: 20 spaces including 12 toddler & 8 (3 - 5 year olds) Enrolment: 20 children</p>	\$10,500	\$5,250	\$12,750	\$9,565	\$1,540	\$1,232	<p><i>Program Enhancement Grant:</i> To assist infant and toddler programs which are serving low and modest income families in maintaining lower than average fees</p> <p><i>Inner-city Sustaining Grant:</i> To keep parent fees below the city-wide average and for a food supplement program</p> <p><i>Inner-city Bursary Grant:</i> 4 spaces</p>	<p>Serves: Downtown Eastside Significant single parent families, High % of children who speak English as an additional language, aboriginal children, children with extra support needs and families receiving MCFD subsidy</p> <p>CONDITION: Serve protein at lunch, mixed vegetables instead of corn, rice instead of fries and serve fries once a month</p>
<p>Eastside Family Place Society - Eastside Family Place</p> <p>Licensed Capacity: 15 spaces</p> <p>Enrolment: varies</p>	0	0	\$11,752	\$3,190	0	0	<p><i>Inner-city Sustaining Grant:</i> for enhancing staff ratios to better serve high-need children and to keep parent fees below city-wide average</p>	<p>Serves: Grandview-Woodlands High % of single parent families, and Significant % of children who speak English as an additional language</p>
<p>Frog Hollow Neighbourhood House (ANH) - Frog Hollow Neighbourhood House's Satellite Daycare</p> <p>Group Care for 3 - 5 year olds Licensed Capacity: 37 spaces including 12 infant/toddler and 25 (3-5 years olds). Enrolment: 37 children</p>	\$10,500	\$5,250	\$12,750	\$6,375	\$2,464	\$2,464	<p><i>Program Enhancement Grant:</i> To assist infant and toddler programs which are serving low and modest income families in maintaining lower than average fees, to strengthen coordinated administration through the community hub model; and to develop and implement a quality improvement plan</p> <p><i>Inner-city Sustaining Grant:</i> To keep parent fees below the city-wide average and for a food supplement program</p> <p><i>Inner-city Bursary Grant:</i> 8 spaces</p>	<p>Serves: Hastings-Sunrise area High % of children from refugee and new immigrant families, and Significant % of children with extra support needs</p> <p>CONDITION: Inner-city Sustaining grant to be used for fees and food program not strengthening coordinated administration. Menu improvements - consult VCHA nutritionist re: menu planning; increase use of 2 food groups for lunches and reduce fat in afternoon snacks</p> <p>CONDITION: CQI*</p>
<p>Kitsilano Neighbourhood House - Kitsilano Neighbourhood House Out of School Care School-aged Care for 6 to 12 year olds Licensed Capacity: 38 spaces Enrolment: 50 children</p>	0	0	\$12,750	0	0	0	<p><i>Inner-city Sustaining Grant:</i> requested support to keep parent fees below the city-wide average and to enhance staff ratios to meet needs of children in high risk situations</p>	<p>Serves: Kitsilano area and the childcare service is provided by a multi-service agency</p> <p>Comment: Not eligible for a grant at this time due to the childcare center profile</p>

Recommendations for the 2004 Childcare Program Enhancement, Inner-city Sustaining Grants and Inner-city Bursary Grants								
Licensee/Childcare Centre	Enhance Grant Request	Enhance Grant Recom	Inner-city Grant Request	Inner-city Grant Recom	Bursary Grant Request	Bursary Grant Recom	Initiative	Childcare Centre Profile/ / Comments & Conditions
Kiwassa Neighbourhood Services Association/ Franklin Community School Association - Franklin Community Preschool Licensed Capacity: 20 spaces x 3 classes Enrolment: 40 children	\$10,500	\$4,200	0	0	\$9,856	\$9,856	<i>Program Enhancement Grant:</i> strengthen coordinated administration through the community hub model + CQI <i>Inner-city Bursary Grant:</i> 32 spaces	Serves Hastings-Sunrise area High % of children who speak English as a second language, children from refugee and immigrant families and Significant % of children who speak little or not English; and operated by a multi-service agency CONDITION: CQI*
Kiwassa Neighbourhood Services Association/ Hastings Townsite Child Care Society - Harbourview Daycare Group Care for 3 - 5 year olds Licensed Capacity: 25 spaces Enrolment: 26 children	\$10,500	\$4,200	\$12,750	\$3,190	\$1,540	\$1,540	<i>Program Enhancement Grant:</i> to strengthen coordinated administration through the community hub model + CQI <i>Inner-city Sustaining Grant:</i> To keep parent fees below the city-wide average and for a food supplement program <i>Inner-city Bursary Grant:</i> 5 spaces	Serves: Hastings-Sunrise area Significant % of single parent families and operated by a parent-run Board & multi-service agency Board (management contract for administration services with Kiwassa Neighbourhood Services Society) Comment: Good menu plan CONDITION: CQI*
Kiwassa Neighbourhood Services Association/ St. David's Preschool Society - St. David's Preschool Preschool Licensed Capacity: 20 spaces x 3 classes Enrolment: 55 children	\$10,500	\$4,200	\$12,750	\$9,565	\$8,008	\$8,008	<i>Program Enhancement Grant:</i> to strengthen coordinated administration through the community hub model and to develop and implement a quality improvement plan <i>Inner-city Sustaining Grant:</i> To keep parent fees below the city-wide average and for a food supplement program <i>Inner-city Bursary Grant:</i> 26 spaces	Serves: Hastings-Sunrise area High % of children with English as an additional language, children who speak little or no English, children from refugee and immigrant families; and operated by a parent-run Board & multi-service agency Board (management contract for administration services with Kiwassa Neighbourhood Services Society) CONDITION: Menu improvements - improve afternoon snack, no cream cheese and no pretzels CONDITION: CQI*
Kiwassa Neighbourhood Services Association - Kiwassa Variety Club Day Care Group Care for 3 - 5 year olds Licensed Capacity: 25 spaces Enrolment: 26 children	\$10,500	\$3,730	\$12,750	\$12,750	0	0	<i>Program Enhancement Grant:</i> to develop and implement a quality improvement plan <i>Inner-city Sustaining Grant:</i> To keep parent fees below the city-wide average and for a food supplement program	Serves: Hastings-Sunrise area Significant % of single parent families, aboriginal children, and children with extra support needs; High % of children with English as an additional language, children who speak little or no English, children from refugee and immigrant families and families receiving MCFD childcare subsidy; and operated by multi-service agency Board CONDITION: Menu improvements - serve dairy at breakfast and include more sources of protein servings in menu plan CONDITION: CQI*

Recommendations for the 2004 Childcare Program Enhancement, Inner-city Sustaining Grants and Inner-city Bursary Grants								
Licensee/Childcare Centre	Enhance Grant Request	Enhance Grant Recom	Inner-city Grant Request	Inner-city Grant Recom	Bursary Grant Request	Bursary Grant Recom	Initiative	Childcare Centre Profile/ / Comments & Conditions
Kiwassa Neighbourhood Services Association - Kiwassa Longhouse Out of School Care School-aged Care for 6 to 12 year olds Licensed Capacity: 33 spaces Enrolment: 33 children	0	0	0	0	\$2,156	\$0	<i>Inner-city Bursary Grant: requested support for 7 spaces</i>	Serves: Hastings-Sunrise Significant % of single parent families and High % of families receiving MCFD childcare subsidy; and operated by a parent-run Board & multi-service agency Board (management contract for administration services with Kiwassa Neighbourhood Services Society) Comment: not eligible due to fees being higher than city-wide average
Little Mountain Neighbourhood House - Sunset Child Care Society - Sunset Day Care Centre Group Care for 3 - 5 year olds Licensed Capacity: 25 spaces Enrolment: 25 children	0	0	\$12,750	\$6,375	\$4,620	\$1,540	<i>Inner-city Sustaining Grant: to provide a food supplement program</i> <i>Inner-city Bursary Grant: 5 spaces</i>	Serves: South Vancouver area (including Sunset neighbourhood) High % of children who speak English as a second language, and Significant % of children with extra support needs and families receiving MCFD childcare subsidy; and operated by a parent-run Board (management contract for administration services with Little Mountain Neighbourhood House) CONDITION: Menu improvement - add more protein and vegetables to meals
Little Mountain Neighbourhood House Society - Little Mountain Out of School Care School-aged Care for 6 to 12 year olds Licensed Capacity: 20 spaces Enrolment: 20 children	\$4,000	\$4,000	0	0	\$1,232	\$1,232	<i>Program Enhancement Grant: to develop and implement a quality improvement plan</i> <i>Inner-city Bursary Grant: 4 spaces</i>	Serves: Riley Park & Kensington Cedar Cottage areas (McBride Elementary School Catchment area) High % of single parent families, children who speak English as an additional language, and families receiving MCFD childcare subsidy, and Significant % of aboriginal children and children with extra support needs and operated by a multi-service agency Board CONDITION: CQI*
Little Mountain Neighbourhood House Society - Little Mountain Neighbourhood House Child Development Centre Group Care for 3 - 5 year olds Licensed Capacity: 15 spaces Enrolment: 12 children	\$6,500	\$4,200	\$12,750	\$9,565	\$2,772	\$2,772	<i>Program Enhancement Grant: to develop and implement a quality improvement plan</i> <i>Inner-city Sustaining Grant: for a food supplement program</i> <i>Inner-city Bursary Grant: 9 spaces</i>	Serves Riley Park area Significant % of children who speak English as an additional language, High % of children from refugee/immigrant families, children with extra support needs and families receiving MCFD childcare subsidy; and operated by a multi-service agency Board Comment: grant for food program also applies to Little Mountain Out of School Care Program CONDITION: Menu improvement - replace juice with milk in menu plan CONDITION: CQI*

Recommendations for the 2004 Childcare Program Enhancement, Inner-city Sustaining Grants and Inner-city Bursary Grants								
Licensee/Childcare Centre	Enhance Grant Request	Enhance Grant Recom	Inner-city Grant Request	Inner-city Grant Recom	Bursary Grant Request	Bursary Grant Recom	Initiative	Childcare Centre Profile/ / Comments & Conditions
<p>McGregor Child Care Society - McGregor Day Care Centre Toddler Care for under 36 months & Group Care for 3 - 5 year olds Licensed Capacity: 37 spaces comprised of 12 toddler & 25 (3 to 5 year olds) Enrolment: 37 children</p>	\$10,500	\$5,250	\$12,750	\$9,565	0	0	<p><i>Program Enhancement Grant:</i> to assist infant and toddler programs which are serving low and modest income families in maintaining lower than average fees and to develop and implement a quality improvement plan</p> <p><i>Inner-city Sustaining Grant:</i> to keep fees below the City-wide average and to enhance staff ratios to meet needs of high risk children</p>	<p>Serves Mount Pleasant area (and VCC - King Edward Campus students) High % of single parent families, children who speak English as an additional language and families receiving MCFD childcare subsidy and Significant % of children with extra support needs; and operate by a multi-service agency Board (college campus based non-profit society)</p> <p>CONDITION: Inner-city Sustaining grant is only for keeping fees below the City-wide average</p> <p>CONDITION: CQI*</p>
<p>Mount Pleasant Neighbourhood House - Mount Pleasant Neighbourhood House Preschool Preschool Licensed Capacity: 40 spaces Enrolment: 100 children</p>	\$10,500	\$4,200	\$12,750	\$9,565	\$6,160	\$6,160	<p><i>Program Enhancement Grant:</i> to develop and implement a quality improvement plan</p> <p><i>Inner-city Sustaining Grant:</i> to keep parent fees below the City-wide average and to enhance staff ratios to better serve high-need children</p> <p><i>Inner-city Bursary Grant:</i> 20 spaces</p>	<p>Serves: Mount Pleasant area High % of children who speak English as an additional language, children from refugee or immigrant families and Significant % of children who speak little or no English, and children with extra support needs; and operated by a multi-service agency Board</p> <p>CONDITION: CQI*</p>
<p>Ray-Cam Co-operative Association - Ray-Cam Preschool, Full and Part Time Day Care, Childminding and Out of School Care Preschool, Group Care for Toddlers and 3 to 5 year olds and School-aged Care for 6 to 12 year olds Licensed Capacity: 135 spaces Enrolment: 115 children</p>	\$10,500	\$5,250	\$12,750	\$12,750	\$9,240	\$9,240	<p><i>Program Enhancement Grant:</i> to assist infant and toddler programs serving low/modest income families in maintaining lower than average fees</p> <p><i>Inner-city Sustaining Grant:</i> to keep parent fees below the City-wide average and to provide a food supplement program</p> <p><i>Inner-city Bursary Grant:</i> 30 spaces</p>	<p>Serves: Downtown Eastside and Strathcona areas High % of single parent families, of children who speak English as an additional language, children from refugee or immigrant families; and families receiving MCFD childcare subsidy, Significant % of aboriginal children, and children with extra support needs; and operated by a multi-service agency Board</p> <p>CONDITION: Menu improvements - less dessert at snacks and serve 2 food groups at snack</p>
<p>Shannon Day Care Society - Shannon Day Care Centre Group Care for Toddlers under 36 months & 3 - 5 year olds Licensed Capacity: 25 spaces Enrolment: 20 children</p>	\$10,500	\$5,250	0	0	0	0	<p><i>Program Enhancement Grant:</i> to assist infant and toddler programs which are serving low and modest income families in maintaining lower than average fees</p>	<p>Serves: Marpole area Significant % of children who speak English as an additional language, children who speak little or no English and children from refugee or immigrant families; and operated by a parent-run Board</p>

Recommendations for the 2004 Childcare Program Enhancement, Inner-city Sustaining Grants and Inner-city Bursary Grants								
Licensee/Childcare Centre	Enhance Grant Request	Enhance Grant Recom	Inner-city Grant Request	Inner-city Grant Recom	Bursary Grant Request	Bursary Grant Recom	Initiative	Childcare Centre Profile/ / Comments & Conditions
South Vancouver Neighbourhood House - Poppins Preschool Preschool Licensed Capacity: 60 spaces Enrolment: 54 children	0	0	\$12,750	\$9,565	\$5,544	\$5,544	<i>Inner-city Sustaining Grant:</i> to keep parent fees below the City-wide average <i>Inner-city Bursary Grant:</i> 18 spaces	Serves: South Vancouver High % of children who speak English as an additional language, children who speak little or no English; and operated by a multi-service agency Board
South Vancouver Neighbourhood House - South Vancouver Neighbourhood Out of School Care School Aged Care for 6 to 12 year olds Licensed Capacity: 20 spaces Enrolment: 6 spaces	0	0	0	0	\$5,544	\$5,544	<i>Inner-city Bursary Grant:</i> 18 spaces	Serves: South Vancouver High % of children who speak English as an additional language, children who speak little or no English; Significant % of aboriginal children and children with extra support needs; and operated by a multi-service agency Board
Spare Time Child Care Society - Spare Time Challenge Club School Aged Care for 6 to 12 year olds Licensed Capacity: 219 spaces for all programs in hub model Licensed Capacity: 60spaces Enrolment: 35 children (for specific program applied for re: Inner-city Sustaining Grant and Bursary Grant)	\$10,500	\$5,250	\$12,750	\$3,190	\$11,396	\$11,396	<i>Program Enhancement:</i> to strengthen coordinated administration through the community hub model <i>Inner-city Sustaining Grant:</i> to keep parent fees below the City-wide average and provide a food supplement program <i>Inner-city Bursary Grant:</i> 37 spaces	Serves: Fraserview, Marpole/Oakridge and Mount Pleasant areas Significant % of single parent families, children who speak English as an additional language and families receiving MCFD child care subsidy; and operated by a parent-run Board Comment: Good menu plan
Spare Time Fun Centre Society - Spare Time Fun Centre Kindercare & Out of School Care School-aged Care for 5 - 12 year olds Licensed Capacity: 100 spaces Enrolment: 93 children	0	0	\$12,750	0	0	0	<i>Inner-city Sustaining Grant:</i> requested support for a food supplement program to provide a hot lunch program for an elementary school (replacement funding for David Lloyd George Elementary School hot lunch program)	Serves: Marpole area (David Lloyd George Elementary School catchment area) Significant % of single parent families, children who speak English as an additional language, children from refugee or immigrant families, children with extra support needs and operated by a parent-run Board Comment: initiative applied for is not an eligible activity

Recommendations for the 2004 Childcare Program Enhancement, Inner-city Sustaining Grants and Inner-city Bursary Grants								
Licensee/Childcare Centre	Enhance Grant Request	Enhance Grant Recom	Inner-city Grant Request	Inner-city Grant Recom	Bursary Grant Request	Bursary Grant Recom	Initiative	Childcare Centre Profile/ / Comments & Conditions
Spare Time Fun Centre Society - Spare Time Fun Centre Preschool Licensed Capacity: 20 spaces Enrolment: 4 children	0	0	0	0	\$9,548	0	<i>Inner-city Bursary Grant: requested support for 31 spaces</i>	Serves: Marpole area (David Lloyd George Elementary School catchment area); this is a new preschool program operated by a parent-run Board Comment: not eligible for the Inner-city Bursary grant; the grant is intended to help protect the availability of spaces in existing programs and not for start-up of new programs
St. Michael's Anglican Church - St. Michael's Day Care Centre Group Care for 3 - 5 year olds (two toddler spaces) Licensed Capacity: 25 spaces (includes 2 toddler) Enrolment: 23 children	\$10,500	\$4,080	\$12,750	\$12,750	\$2,156	\$2,156	<i>Program Enhancement Grant: to assist infant and toddler programs which are serving low and modest income families in maintaining lower than average fees</i> <i>Inner-city Sustaining Grant: to keep parent fees below the city-wide average and to provide a food supplement program</i> <i>Inner-city Bursary Grant: 7 spaces</i>	Serves: Mount Pleasant area High % of single parent families, children who speak English as an additional language, children who speak little or no English, children from refugee or immigrant families, and families receiving MCFD subsidy, and Significant % of aboriginal children, and children with extra support needs; and religious organization-run Board CONDITION: Menu improvements - add fruit to breakfast and serve milk instead of juice
Strathcona Community Centre Association - Strathcona After School Care Program School-aged Care for 6 to 12 year olds Licensed Capacity: 45 spaces Enrolment: 45 children	0	0	0	0	\$2,772	\$2,772	<i>Inner-city Bursary Grant: 9 spaces</i>	Serves: Strathcona area High % of single parent families, children who speak English as an additional language, children from refugee or immigrant families, and families receiving MCFD child care subsidy; and operated by a multi-service agency Board
Strathcona Community Centre Association - Strathcona Community Centre Preschool Preschool Licensed Capacity: 40 spaces Enrolment: 23 children	\$10,500	\$4,200	\$12,750	\$9,565	\$7,700	\$7,700	<i>Program Enhancement Grant: to develop and implement a quality improvement plan</i> <i>Inner-city Sustaining Grant: to provide a food supplement program</i> <i>Inner-city Bursary Grant: 25 spaces</i>	Serves: Strathcona area High % of single parent families, children who speak English as an additional language, children from refugee or immigrant families, and operated by a multi-service agency Board CONDITIONS: <i>Program Enhancement Grant</i> - further consultation with Child Development Coordinator before proceeding with proposed quality improvement plan CONDITION: Submission of 2003 CQI Plan <i>Inner-city Sustaining Grant</i> - menu improvements - serve less cocktail wieners, no margarine, serve more milk, replace bologna with roast beef, chicken or ham

Recommendations for the 2004 Childcare Program Enhancement, Inner-city Sustaining Grants and Inner-city Bursary Grants								
Licensee/Childcare Centre	Enhance Grant Request	Enhance Grant Recom	Inner-city Grant Request	Inner-city Grant Recom	Bursary Grant Request	Bursary Grant Recom	Initiative	Childcare Centre Profile/ / Comments & Conditions
Sunset Community Centre Association - Sunset Out of School Care School-aged Care for 6 to 12 year olds Licensed Capacity: 18 spaces Enrolment: 3 children	0	0	\$12,750	0	\$5,852	0	<i>Inner-city Sustaining Grant</i> :requested support to keep parent fees below the city-wide average and to provide a food supplement program <i>Inner-city Bursary Grant</i> : 19 spaces	Serves: Sunset area (Henderson Elementary School catchment area) Only 3 children are currently enrolled in the program; the childcare profile sample is too small to be relevant Comment: Not a viable program due to enrolment numbers
Sunset Community Centre Association - Sunset Memorial Community Centre Nursery School Preschool Licensed Capacity: 38 spaces x 8 classes Enrolment: 144 children	\$10,500	\$5,250	0	0	0	0	<i>Program Enhancement Grant</i> : to develop and implement a quality improvement plan	Serves: Sunset area High % of children who speak English as an additional language, children from refugee or immigrant families CONDITION: further consultation with Child Development Coordinator before proceeding with proposed quality improvement plan
Thunderbird Neighbourhood Association (Rupert-Cassiar Nbhd Assoc.) - Thunderbird Neighbourhood Centre Nursery School Preschool Licensed Capacity: 20 spaces Enrolment: 20 children	\$10,000	\$4,200	0	0	\$1,232	\$1,232	<i>Program Enhancement Grant</i> : to develop and implement a quality improvement plan <i>Inner-city Bursary Grant</i> : 4 spaces	Serves: Hastings-Sunrise area Significant % of single parent families, children who speak little or no English, aboriginal children and High % of children who speak English as an additional language, children with extra support needs; and operated by a multi-service organization Board CONDITION: CQI*
Thunderbird Neighbourhood Association (Rupert Cassiar Nbhd Assoc.) - Thunderbird After School Care School-aged Care for 6 to 12 years old Licensed Capacity: 47 spaces Enrolment: 47 children	0	0	\$12,000	\$12,000	\$3,080	\$3,080	<i>Inner-city Sustaining Grant</i> : for food supplement program <i>Inner-city Bursary Grant</i> : 10 spaces	Serves: Hastings-Sunrise area High % of single parent families, aboriginal children, children with extra support needs and families receiving MCFD child care subsidy; and Significant % of children who speak little or no English, % of children who speak English as an additional language; and operated by a multi-service organization Board CONDITION: Menu improvements - change apple juice to milk and no cheese whiz
Thunderbird Neighbourhood Association - Thunderbird Neighbourhood Centre Group Daycare Group Care for 3 - 5 year olds Licensed Capacity: 20 spaces Enrolment: 20 children	0	0	0	0	\$1,232	\$1,232	<i>Inner-city Bursary Grant</i> : 4 spaces	Serves: Hastings-Sunrise area Significant % of single parent families, children who speak little or no English, aboriginal children and High % of children who speak English as an additional language, children with extra support needs; and operated by a multi-service organization Board

Recommendations for the 2004 Childcare Program Enhancement, Inner-city Sustaining Grants and Inner-city Bursary Grants								
Licensee/Childcare Centre	Enhance Grant Request	Enhance Grant Recom	Inner-city Grant Request	Inner-city Grant Recom	Bursary Grant Request	Bursary Grant Recom	Initiative	Childcare Centre Profile/ / Comments & Conditions
<p>Vancouver Aboriginal Friendship Centre Society - Sundance Day Care Centre</p> <p>Group Care for 3 - 5 year olds Licensed Capacity: 25 spaces Enrolment: 16 children</p>	\$4,800	\$4,200	\$12,750	\$12,750	\$4,312	\$4,312	<p><i>Program Enhancement Grant:</i> to develop and implement a quality improvement plan</p> <p><i>Inner-city Sustaining Grant:</i> to provide a food program</p> <p><i>Inner-city Bursary Grant:</i> 14 spaces</p>	<p>Serves Grandview-Woodlands area High % of single parent families, aboriginal children, and families receiving MCFD child care subsidy, and Significant % of children with extra support needs; and operated by a multi-service agency Board</p> <p>CONDITIONS: Program Enhancement Grant - Consult Child Development Coordinator before commencing quality improvement initiative Inner-city Sustaining Grant: Full grant to be used for food, provide more nutritious snacks, avoid choking foods such as grapes, popcorn and wieners</p>
<p>Vancouver Chinese Pentecostal Benevolent Society - Sunshine Corner Day Care</p> <p>Group Care for 3 - 5 year olds (some toddler spaces) Licensed Capacity: 25 spaces including 2 toddler and 23 (3-5 Year olds) Enrolment: 21 children</p>	\$7,440	0	\$12,584	\$9,565	\$2,772	\$2,772	<p><i>Program Enhancement Grant:</i> to assist infant and toddler programs which are serving low and modest income families in maintaining lower than average fees</p> <p><i>Inner-city Sustaining Grant:</i> to provide a food supplement program and to keep parent fees below city-wide average</p> <p><i>Inner-city Bursary Grant:</i> 9 spaces</p>	<p>Serves Mount Pleasant area High % of children who speak English as an additional language, children from refugee or immigrant families, Significant % of families receiving MCFD child care subsidy; and operated by a religious-run Board</p> <p>Comment: Not eligible for the Program Enhancement grant; Menu plan showed good improvement from last year</p>
<p>YMCA of Greater Vancouver - Nanook Day Care</p> <p>Group Care - 3 to 5 year olds Licensed Capacity: 25 spaces Enrolment: 25 children</p>	0	0	\$12,750	\$9,565	\$1,540	\$1,540	<p><i>Inner-city Sustaining Grant:</i> to keep parent fees below the city-wide average and to provide a food supplement program</p> <p><i>Inner-city Bursary Grant:</i> 5 spaces</p>	<p>Serves: Mount Pleasant area High % of single parent families, significant % of children who speak English as an additional language, children from refugee or immigrant families, and families receiving MCFD child care subsidy; and operated by a multi-services agency Board</p> <p>CONDITON: Inner-city Sustaining Grant is for food only; Menu improvements - serve chips less (alternative substitute with corm bread), no jam sandwiches</p>
<p>YMCA of Greater Vancouver - Mount Pleasant YMCA Kids Club</p> <p>School-aged Care 6 to 12 Years Old Licensed Capacity: 40 spaces Enrolment: 17 children</p>	0	0	0	0	\$9,240	\$9,548	<p><i>Inner-city Bursary Grant:</i> 31 spaces</p>	<p>Serves: Mount Pleasant area High % of single parent families, children who speak English as an additional language, children from refugee or immigrant families, and significant % of families receiving MCFD child care subsidy; and operated by a multi-services agency Board</p>

Recommendations for the 2004 Childcare Program Enhancement, Inner-city Sustaining Grants and Inner-city Bursary Grants								
Licensee/Childcare Centre	Enhance Grant Request	Enhance Grant Recom	Inner-city Grant Request	Inner-city Grant Recom	Bursary Grant Request	Bursary Grant Recom	Initiative	Childcare Centre Profile/ / Comments & Conditions
YWCA - YWCA Citygate Child Care Centre Group Care - 3 to 5 Year Olds Licensed Capacity: 25 spaces Enrolment: 25 children	\$10,500	\$4,200	0	0	\$1,540	\$1,540	<i>Program Enhancement Grant: to develop and implement a quality improvement plan</i> <i>Inner-city Bursary Grant: 5 spaces</i>	Serves: East False Creek, Strathcona and Downtown Eastside High % of single parent families and families receiving MCFD child care subsidy, Significant % of aboriginal children and children with extra support needs CONDITION: CQI*
YWCA - Crabtree Corner Emergency Childcare for Infants/Toddlers & 3 to 5 Year Olds Licensed Capacity: 24 spaces Enrolment: 24 children	0	0	\$12,750	\$12,750	0	0	<i>Inner-city Sustaining Grant: to provide a food supplement program</i>	Serves: Downtown Eastside, Strathcona and Grandview-Woodlands High % single parent families, aboriginal children, children with extra support needs and families receiving MCFD child care subsidy CONDITION: Menu improvements - Consult VCH nutritionist - provide dairy at breakfast, reduce use of chips to one time per month, serve 2 food groups at snack, use yoghurt instead of syrup, real cheese instead of cheese whiz
TOTAL:	\$256,580	\$126,150	\$374,261	\$232,025	\$178,948	\$161,084		

Notes:

Inner-city Bursary Grants:

Calculations for this grant are based on \$28 per space per month x 11 months. The number of eligible spaces is calculated based on both licensed capacity and enrolment. 20% of licensed spaces plus the difference, if any, between licensed capacity and enrolment, e.g. a 25 spaces licensed facility with 23 children enrolled would qualify as follows: (25 spaces x 20% = 5 spaces) + (25 spaces - 23 children enrolled = 2 spaces) = 7 spaces

7 spaces x \$28/month x 11 months = a bursary of \$2,156

Comments Section explanatory notes:

MCFD = Ministry of Children and Family Development

VCHA = Vancouver Coastal Health Authority

CONDITION: CQI*

Continuous Quality Improvement Plans must consist of:

1. Team assessment, including independent assessment using Harms and Clifford Environmental Rating Scales (ECKERS) along with staff, Board and parent representation
2. Team review of findings from ECKERS
3. Use of other quality assessment tools
4. Team planning based on findings from review
5. Implementation of plan
6. Review

Childcare profile percentages listed in the comments section:

Single parent families	Significant: 30-50 % High: over 50%
Children who speak English as an additional language	Significant: 30 - 50% High: over 50%
Children who speak little or no English	Significant: 30 - 50% High: over 50%
Children from refugee and immigrant families	Significant: 30 - 50% High: over 50%
Children who are aboriginal	Significant: 15 - 30% High: over 30%
Children with extra support needs	Significant: 15 - 30% High: over 30%
Families who receive MCFD child care subsidy	Significant: 30 - 50% High: over 50%

* * * * *