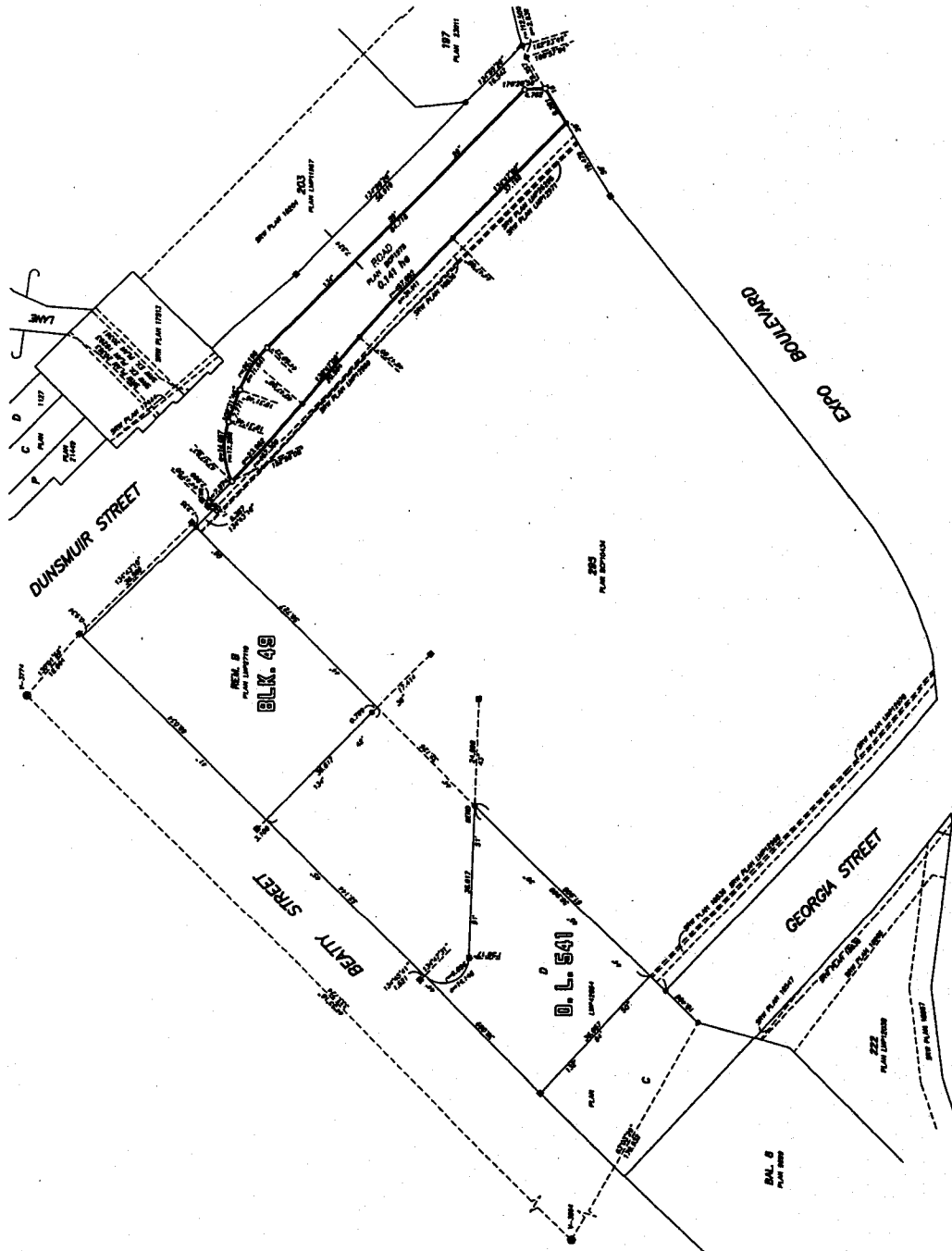


PLAN BCP

REFERENCE PLAN TO ACCOMPANY AN APPLICATION FOR THE  
 REGISTRATION OF TITLE IN THE NAME OF THE CITY OF VANCOUVER  
 TO THAT PORTION OF ROAD DEDICATED BY THE DEPOSIT OF PLAN BCP1978  
 ADJACENT TO LOT 295 FALSE CREEK PLAN BCP10434

REVISED BY THE SURVEYOR'S OFFICE  
 DATE: 1978  
 DRAWN BY: [Name]  
 DATE: 1978

REVISIONS



SCALE 1:500 METERS ARE SHOWN

REGISTERED SURVEY AREA No. 31 (VANCOUVER)  
 MAPS (C.S.S.)  
 THE PLAN SHOWS THE SURVEYED AND ADJACENT LOTS  
 AND THE PORTION OF ROAD DEDICATED BY THE DEPOSIT OF  
 PLAN BCP1978 ADJACENT TO LOT 295 FALSE CREEK PLAN  
 BCP10434.

LEGEND

● BOUNDARY MARKERS SHOWN FROM OBSERVATIONS BENTLEY  
 ○ BOUNDARY MARKERS SHOWN FROM 1978 AND 1978  
 ○ BOUNDARY MARKERS SHOWN FROM 1978  
 ○ BOUNDARY MARKERS SHOWN FROM 1978  
 ○ BOUNDARY MARKERS SHOWN FROM 1978

SCALE

[Signature]

THIS PLAN LIES WITHIN THE GREATER VANCOUVER REGIONAL DISTRICT

REV. 3  
 DATE: 1978

