

PLAN BCP

REFERENCE PLAN TO ACCOMPANY RESOLUTION OF THE COUNCIL OF THE CITY OF VANCOUVER STOPPING-UP A PORTION OF ROAD DEDICATED BY THE DEPOSIT OF PLAN 538, ADJACENT TO LOT C BLOCK 77 DISTRICT LOT 264A PLAN 9531 GROUP 1 NEW WESTMINSTER DISTRICT
 B.C.G.S. 920.025

DEPOSITED IN THE LAND TITLE OFFICE
 AT NEW WESTMINSTER, B.C.,
 MAY 27, 2004

REGISTRAR

REF. NO.



INTEGRATED SURVEY AREA NO. 31 (VANCOUVER)
 MAD83(CSRS)

THIS PLAN SHOWS HORIZONTAL GROUND-LEVEL DISTANCES AND BEARINGS. VERTICAL DISTANCES TO COMPUTE GRID DISTANCES, MULTIPLE GROUND-LEVEL DISTANCES BY CORRECTION FACTOR 0.9996027

LEGEND

GRID BEARINGS ARE DERIVED FROM OBSERVATIONS BETWEEN GEODETIC CONTROL MONUMENTS V-3718 AND V-3715 FOUND PLACED

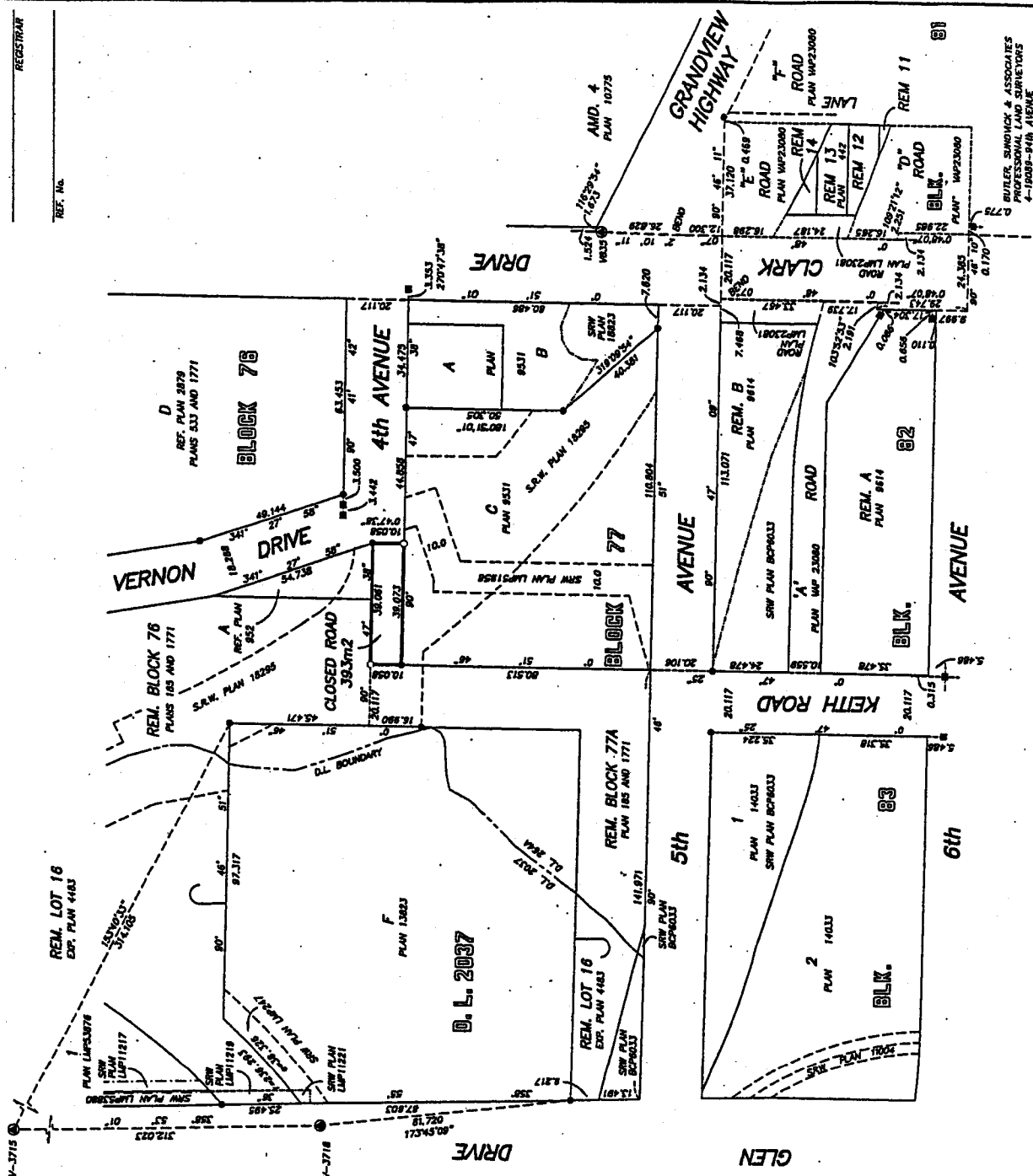
- DENOTES CONTROL MONUMENT
- DENOTES LEAD PLUG
- DENOTES IRON POST
- W DENOTES WITNESS
- M2 DENOTES SQUARE METRES



I, GRANT BULLER, A BRITISH COLUMBIA LAND SURVEYOR, OF DELTA BRITISH COLUMBIA, PERSONALLY SUPERVISED THE SURVEY REPRESENTED BY THIS PLAN, AND THAT THE SURVEY AND ON THIS CORRECT. THE FIELD SURVEY WAS COMPLETED ON THE 21ST DAY OF MAY 2004. THE CHECKLIST WAS FILED UNDER #18891 AND CHECKED AND THE CHECKLIST FILED UNDER #18891 ON THE 31ST DAY OF MAY 2004

GRB

B.C.L.S.



THIS PLAN LIES WITHIN THE GREATER VANCOUVER REGIONAL DISTRICT

BULLER SHIMOCK & ASSOCIATES
 PROFESSIONAL LAND SURVEYORS
 4-10889-914A AVENUE
 SURREY, B.C. V4N 3S4
 FILE # LR214-W-7-2002
 DMS: LR214-W-7-R01