

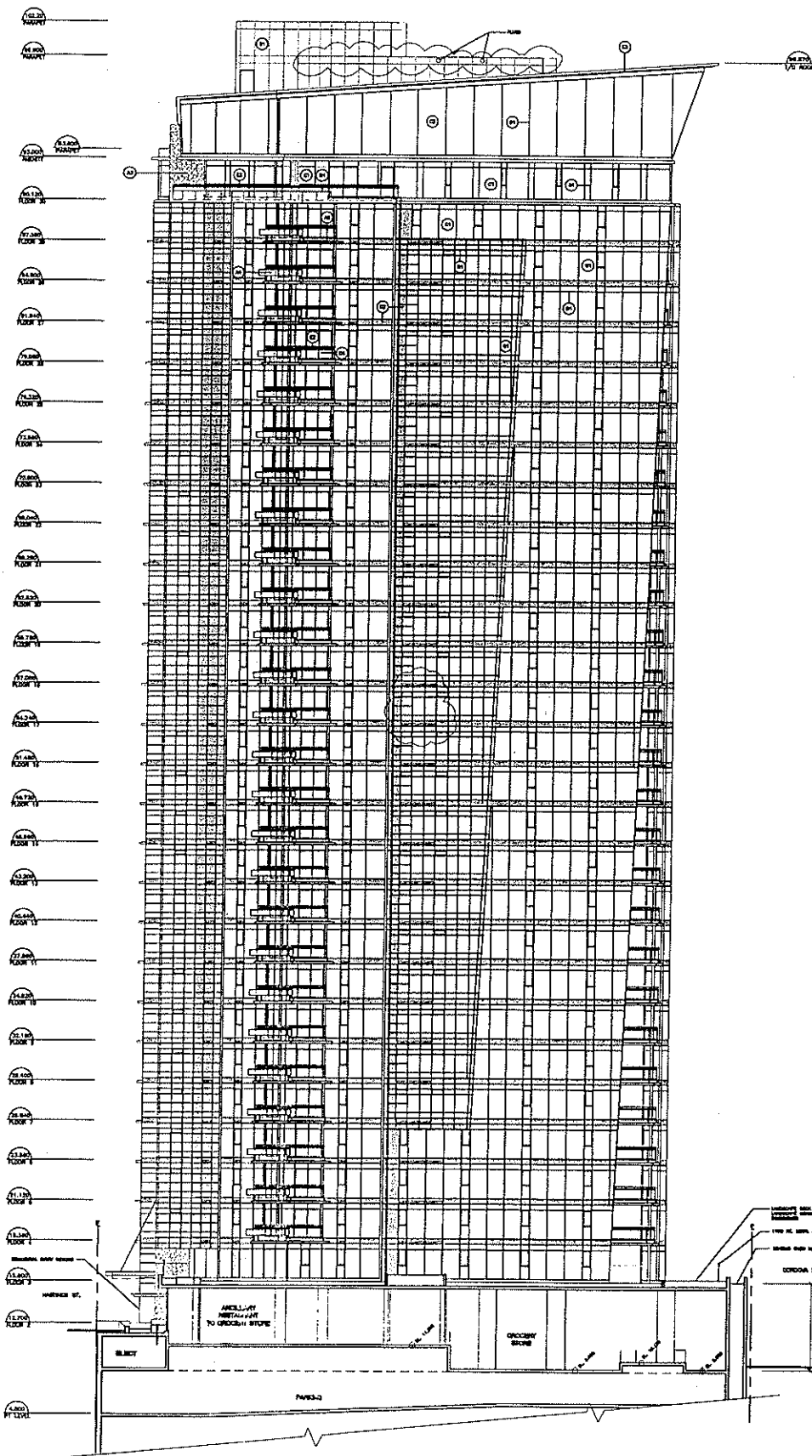
--- ZONING BOUNDARY



Site: 1201 W Hastings St DE 408040
City of Vancouver Planning Department

Date: 2004 June 3
Drawn: TM
Scale: 1:2000





EXTERIOR MATERIALS AND COLORS LEGEND

- ① ONT 11 PLACE ARCHITECTURAL CONCRETE- PAINTED
COLOR: 1. WHITE
- ② ONT 11 PLACE ARCHITECTURAL CONCRETE- PAINTED
COLOR: 1. LIGHT GREY
- ③ PRE-CAST CONCRETE PANEL GLAZING
COLOR: 1. TINTED GLASS WITH LAMINATE INSULATION
WITH AIR-SEALANT GASKET
- ④ PRE-CAST CONCRETE PANELS- PAINTED
COLOR: 1. OFFWHITE
- ⑤ METAL PANELS
COLOR: 1. LIGHT GREY
- ⑥ BRICK WALL GLAZING
COLOR: 1. SILVER TINTED LOW-E
- ⑦ FINISH: BRICKWORK & LIGHT GLAZING
COLOR: 1. CLEAR LOW-E
- ⑧ TYPICAL SPANGLER SPANGLER GLASS
COLOR: 1. SILVER
- ⑨ SLAB AT BALCONY
COLOR: 1. CLEAR
- ⑩ ALUMINUM WINDOW FRAMES - TYPICAL
COLOR: SILVER
- ⑪ ALUMINUM WINDOW FRAMES - BENCH/ACCESS
COLOR: SILVER
- ⑫ METAL 3 (SPANDREL, LEANING, BALANCE, WALLS & BARRIERS)
COLOR: SILVER
- ⑬ METAL 3 (SPANDREL, LEANING, BALANCE, WALLS & BARRIERS)
COLOR: OFFWHITE
- ⑭ METAL WINDOW ROOF ROOF
COLOR: SILVER

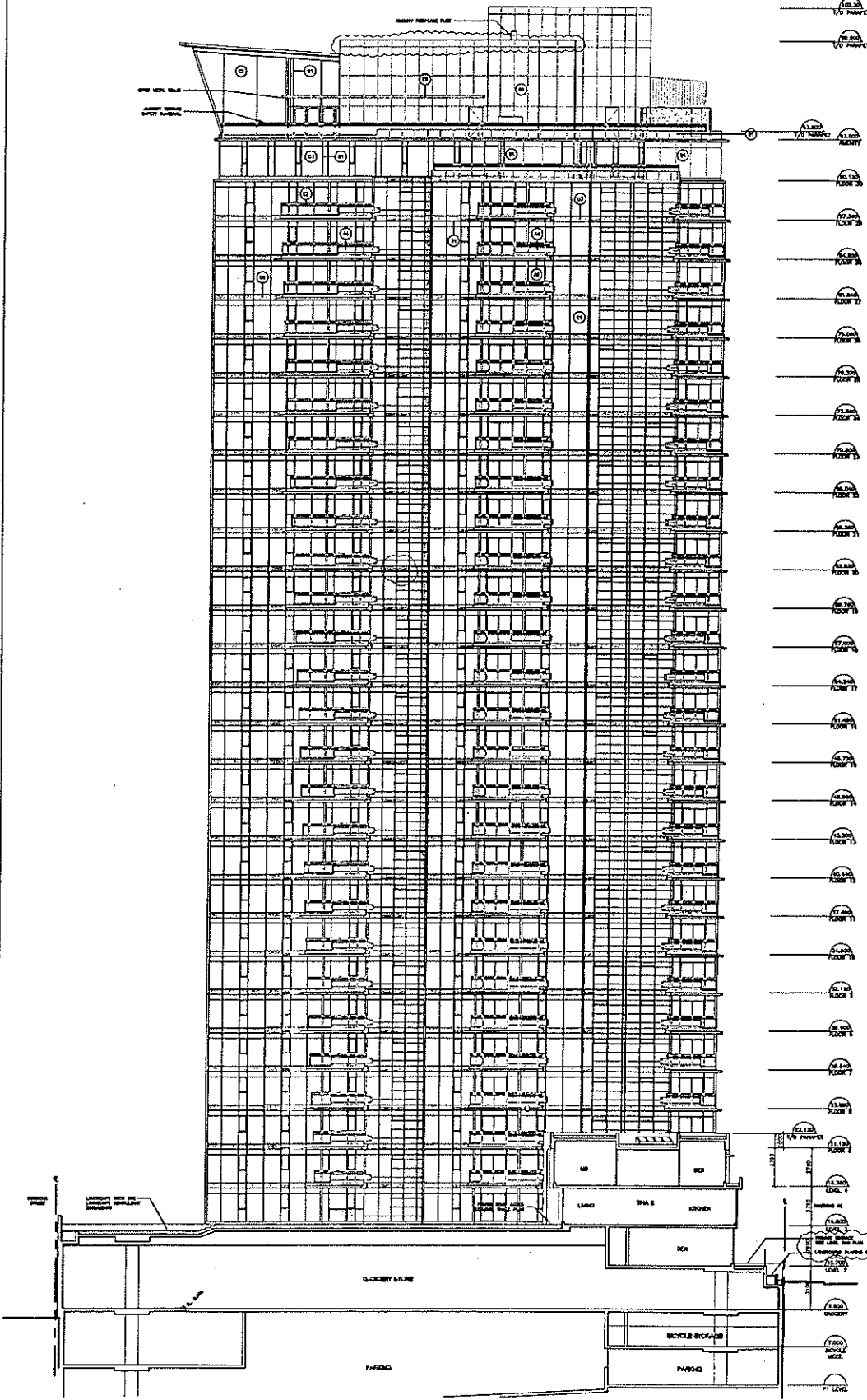
DATE: 15/05/2014
 DRAWN BY: [Name]
 CHECKED BY: [Name]
 PROJECT: [Name]
 SHEET: A-14

DA
 DEVELOPMENT
 201 WEST
 HASTINGS STREET

DELTA LAND
 DEVELOPMENT
 LTD.

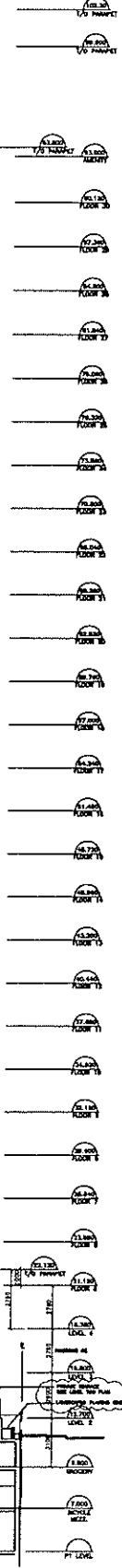
NO.	REVISION	DATE
1	ISSUED FOR PERMIT	15/05/2014
2	ISSUED FOR CONSTRUCTION	15/05/2014
3	ISSUED FOR AS-BUILT	15/05/2014

KEY PLAN



EXTERIOR MATERIALS AND COLOURS LEGEND

- (A) CHIT IN PLACE ARCHITECTURAL CONCRETE - BEIGE
COLOUR 1 FINISH
- (B) CHIT IN PLACE ARCHITECTURAL CONCRETE - PINK
COLOUR 1 LIGHT GREY
- (C) PRE-CAST CONCRETE PANEL GLAZING
COLOUR 1 TINTED GLASS WITH LIGHT BROWN SHIMMER
WITH 10% SHIMMER COLOUR
- (D) PRE-CAST CONCRETE PANELS - FINISH
COLOUR 1 CONCRETE
- (E) METAL PANELS
COLOUR 1 LIGHT GREY
- (F) THERMO-BRILL GLAZING
COLOUR 1 BRILLIANT TINTED LITE-C
- (G) ALUMINUM WINDOW FRAMES & LIGHT GLAZING
COLOUR 1 DARK LIME-G
- (H) EXPANDED POLYSTYRENE INSULATION
COLOUR 1 BLACK
- (I) GLASS OF BALCONY
COLOUR 1 CLEAR
- (J) ALUMINUM WINDOW FRAMES - TYPICAL
COLOUR 1 BEIGE
- (K) ALUMINUM WINDOW FRAMES - TYPICAL
COLOUR 1 CONCRETE
- (L) METAL 1 WINDOW, LAMINATED GLASS, TINTED & SHIMMERING
COLOUR 1 FINISH
- (M) METAL 2 WINDOW, LAMINATED GLASS, TINTED & SHIMMERING
COLOUR 1 CONCRETE
- (N) METAL WINDOW WITH SHIMMER
COLOUR 1 BEIGE



DA
 DEVELOPMENT
 CONSULTANTS

ORIELAND
 DEVELOPMENT
 LTD.

DBO
 201 WEST
 MADISON STREET

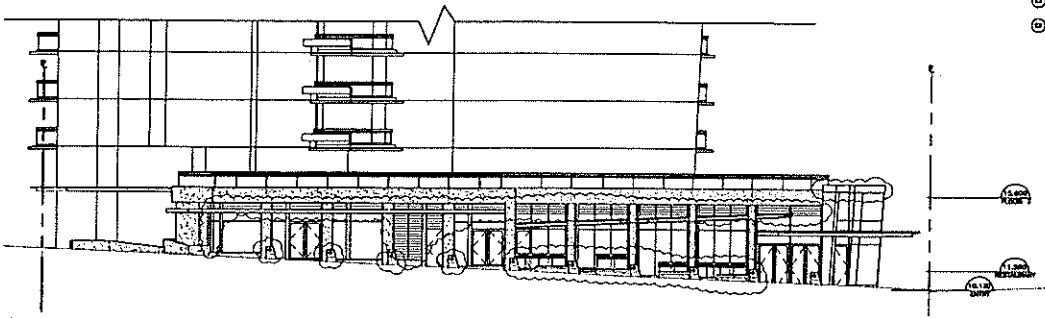
WEST TOWER EASTWING
 SECTION
 A-15

NO.	DESCRIPTION	DATE	BY	CHECKED
1	ISSUED FOR PERMIT			
2	ISSUED FOR CONSTRUCTION			
3	ISSUED FOR AS-BUILT			
4	ISSUED FOR RECORD			
5	ISSUED FOR ARCHIVE			

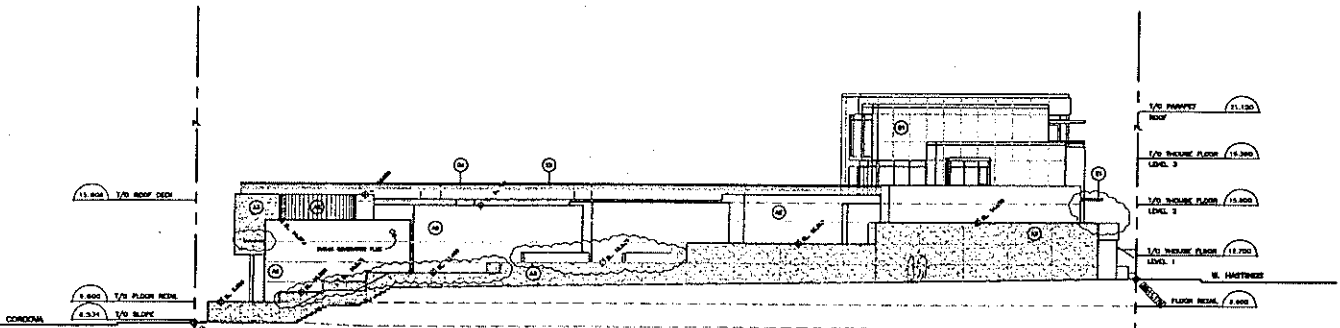
KEY PLAN

EXTERIOR MATERIALS AND COLOURS LEGEND

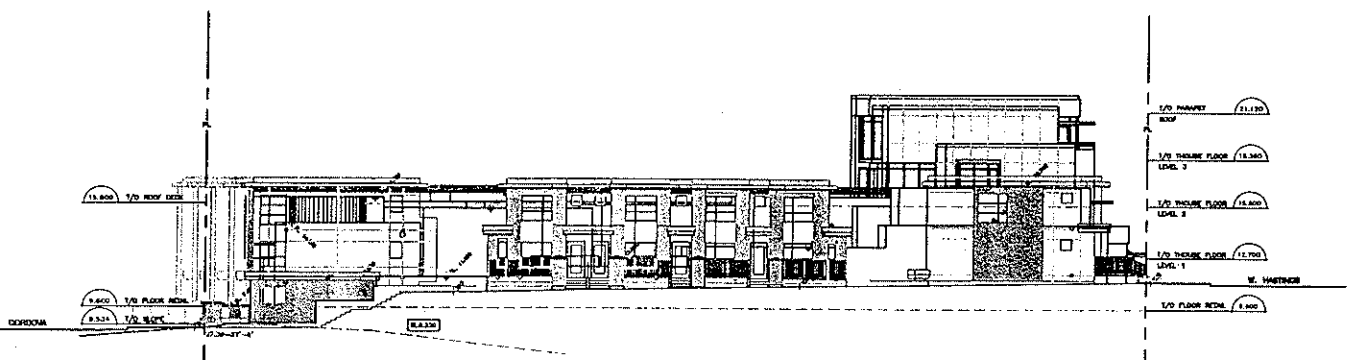
- ① CAST IN PLACE ARCHITECTURAL CONCRETE - BEIGE
COLOUR 1 WALLS
- ② CAST IN PLACE ARCHITECTURAL CONCRETE - PINKISH
COLOUR 1 LIGHT ROOF
- ③ PRE-CAST CONCRETE PANEL GLASSING
COLOUR 1 TYPICAL CURTAIN WALL PANELS
NEW AND EXISTING GLASSING
- ④ PRE-CAST CONCRETE PANELS - PINKISH
COLOUR 1 CHANGING
- ⑤ METAL PANELS
COLOUR 1 LIGHT GREY
- ⑥ THICK WALL BLINDS
COLOUR 1 BEIGE TYPICAL LIN-E
- ⑦ ANCHOR SYSTEMS & LOBBY GLASSING
COLOUR 1 CLEAR LIN-E
- ⑧ TYPICAL CHROME SPINDLES, RAILS
COLOUR 1 BLACK
- ⑨ GLASS IN WALLS
COLOUR 1 CLEAR
- ⑩ ALUMINUM WINDOW FRAMES - TYPICAL
COLOUR 1 BLUE
- ⑪ ALUMINUM WINDOW FRAMES - SPECIAL ACCESS
COLOUR 1 CHARCOAL
- ⑫ METALS & FINISHES, LAMINATE, SOLIDS, TILES & STONEWORK
COLOUR 1 BLUE
- ⑬ METALS & FINISHES, LAMINATE, SOLIDS, TILES & STONEWORK
COLOUR 1 CHARCOAL
- ⑭ METAL TYPICAL ROOF
COLOUR 1 BLUE



NITE STREET ELEVATION



POOLUM WEST ELEVATION



POOLUM REFLECTED WEST ELEVATION

<p>D/A</p> <p>DESIGN ARCHITECTS</p> <p>201 WEST HASTINGS STREET</p>	<p>DEVELOPER</p> <p>DEVELOPMENT LTD.</p>	<table border="1"> <tr><td>1</td><td>CONCRETE</td><td>BEIGE</td></tr> <tr><td>2</td><td>CONCRETE</td><td>PINKISH</td></tr> <tr><td>3</td><td>GLASSING</td><td>TYPICAL CURTAIN WALL PANELS</td></tr> <tr><td>4</td><td>GLASSING</td><td>NEW AND EXISTING</td></tr> <tr><td>5</td><td>CONCRETE PANELS</td><td>PINKISH</td></tr> <tr><td>6</td><td>PANELS</td><td>CHANGING</td></tr> <tr><td>7</td><td>PANELS</td><td>LIGHT GREY</td></tr> <tr><td>8</td><td>THICK WALL BLINDS</td><td>BEIGE TYPICAL LIN-E</td></tr> <tr><td>9</td><td>ANCHOR SYSTEMS & LOBBY GLASSING</td><td>CLEAR LIN-E</td></tr> <tr><td>10</td><td>TYPICAL CHROME SPINDLES, RAILS</td><td>BLACK</td></tr> <tr><td>11</td><td>GLASS IN WALLS</td><td>CLEAR</td></tr> <tr><td>12</td><td>ALUMINUM WINDOW FRAMES - TYPICAL</td><td>BLUE</td></tr> <tr><td>13</td><td>ALUMINUM WINDOW FRAMES - SPECIAL ACCESS</td><td>CHARCOAL</td></tr> <tr><td>14</td><td>METALS & FINISHES, LAMINATE, SOLIDS, TILES & STONEWORK</td><td>BLUE</td></tr> <tr><td>15</td><td>METALS & FINISHES, LAMINATE, SOLIDS, TILES & STONEWORK</td><td>CHARCOAL</td></tr> <tr><td>16</td><td>METAL TYPICAL ROOF</td><td>BLUE</td></tr> </table>	1	CONCRETE	BEIGE	2	CONCRETE	PINKISH	3	GLASSING	TYPICAL CURTAIN WALL PANELS	4	GLASSING	NEW AND EXISTING	5	CONCRETE PANELS	PINKISH	6	PANELS	CHANGING	7	PANELS	LIGHT GREY	8	THICK WALL BLINDS	BEIGE TYPICAL LIN-E	9	ANCHOR SYSTEMS & LOBBY GLASSING	CLEAR LIN-E	10	TYPICAL CHROME SPINDLES, RAILS	BLACK	11	GLASS IN WALLS	CLEAR	12	ALUMINUM WINDOW FRAMES - TYPICAL	BLUE	13	ALUMINUM WINDOW FRAMES - SPECIAL ACCESS	CHARCOAL	14	METALS & FINISHES, LAMINATE, SOLIDS, TILES & STONEWORK	BLUE	15	METALS & FINISHES, LAMINATE, SOLIDS, TILES & STONEWORK	CHARCOAL	16	METAL TYPICAL ROOF	BLUE
1	CONCRETE	BEIGE																																																
2	CONCRETE	PINKISH																																																
3	GLASSING	TYPICAL CURTAIN WALL PANELS																																																
4	GLASSING	NEW AND EXISTING																																																
5	CONCRETE PANELS	PINKISH																																																
6	PANELS	CHANGING																																																
7	PANELS	LIGHT GREY																																																
8	THICK WALL BLINDS	BEIGE TYPICAL LIN-E																																																
9	ANCHOR SYSTEMS & LOBBY GLASSING	CLEAR LIN-E																																																
10	TYPICAL CHROME SPINDLES, RAILS	BLACK																																																
11	GLASS IN WALLS	CLEAR																																																
12	ALUMINUM WINDOW FRAMES - TYPICAL	BLUE																																																
13	ALUMINUM WINDOW FRAMES - SPECIAL ACCESS	CHARCOAL																																																
14	METALS & FINISHES, LAMINATE, SOLIDS, TILES & STONEWORK	BLUE																																																
15	METALS & FINISHES, LAMINATE, SOLIDS, TILES & STONEWORK	CHARCOAL																																																
16	METAL TYPICAL ROOF	BLUE																																																

KEY PLAN

