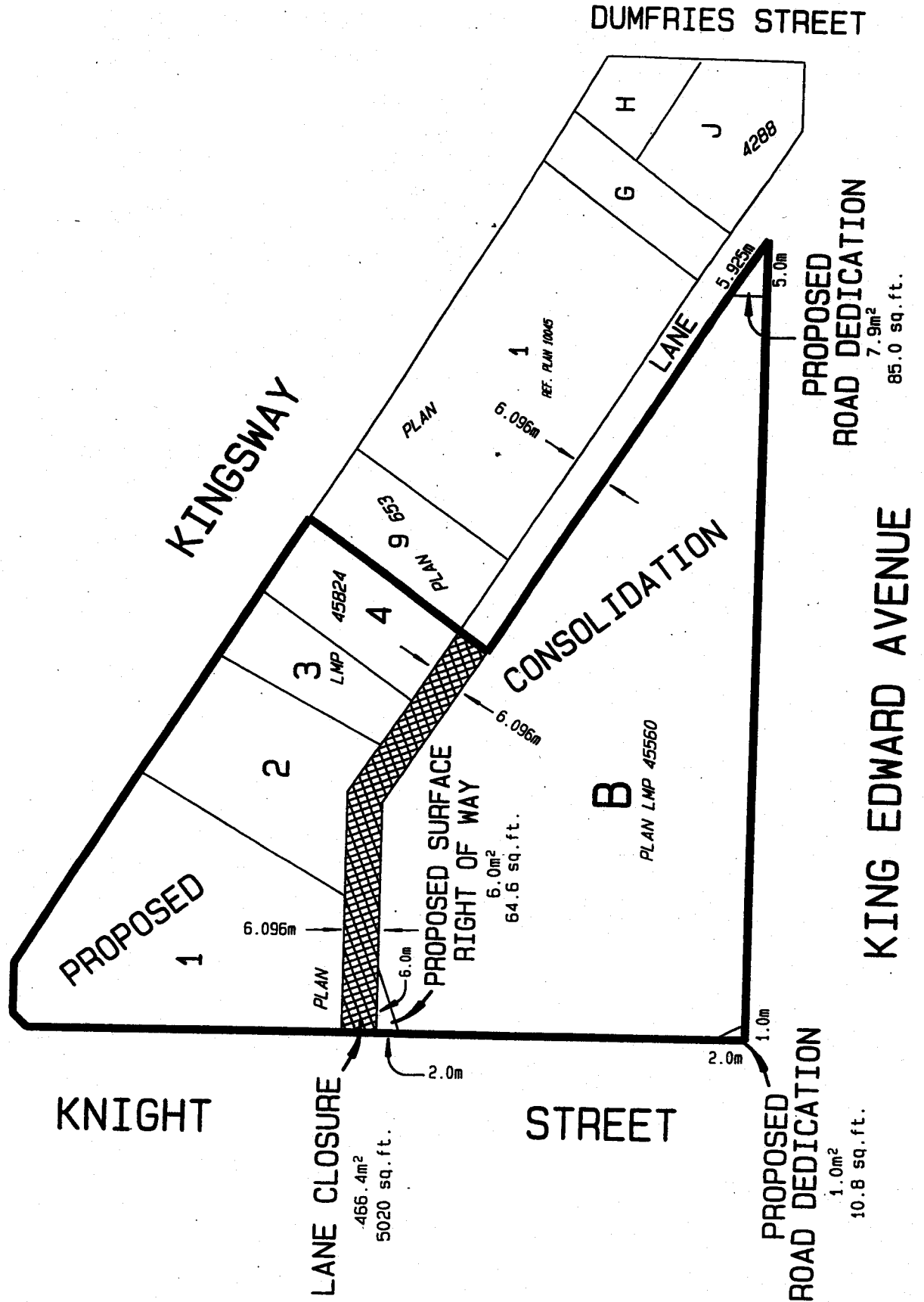


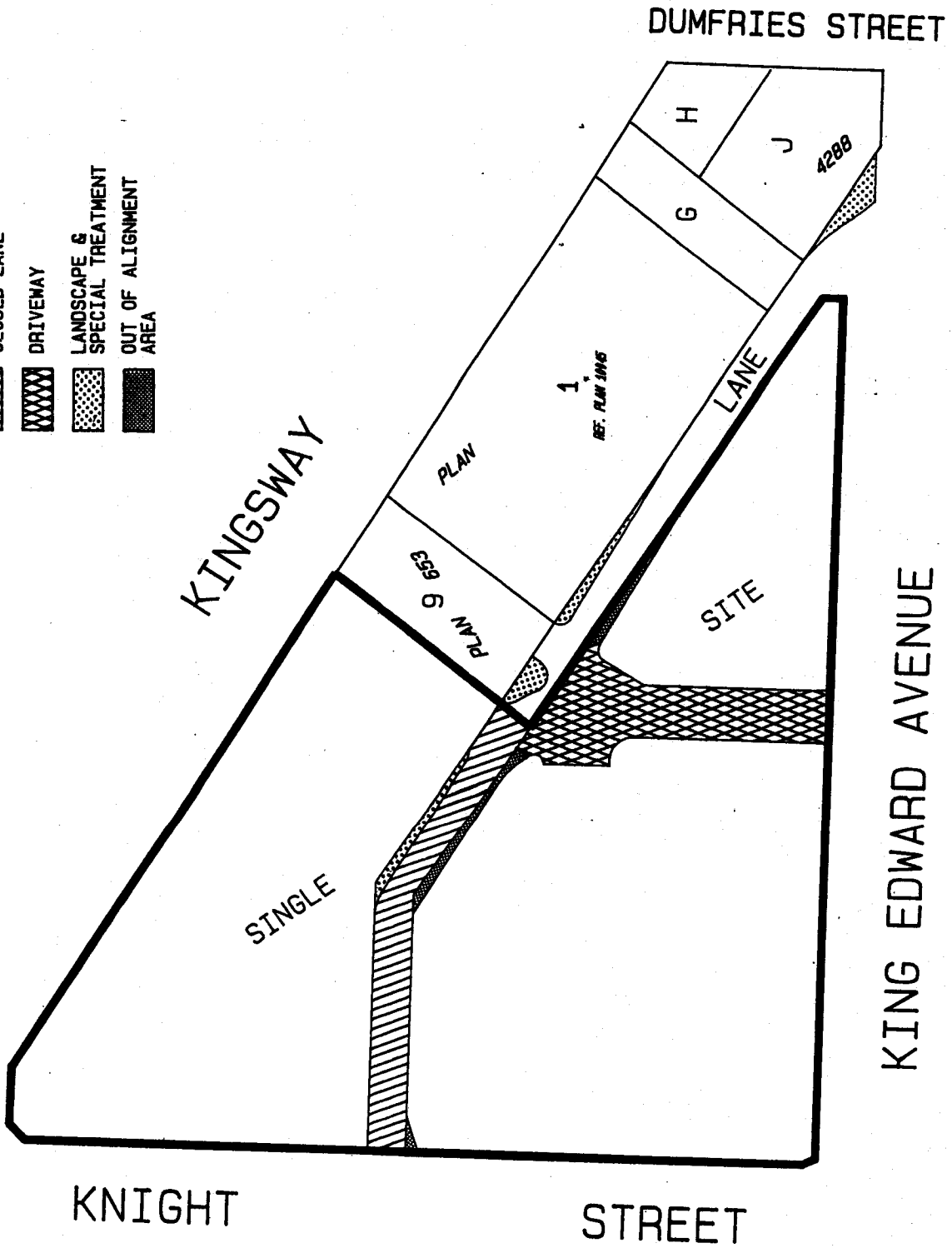
APPENDIX A



APPENDIX B



- RIGHT OF WAY OVER CLOSED LANE
- DRIVEWAY
- LANDSCAPE & SPECIAL TREATMENT
- OUT OF ALIGNMENT AREA



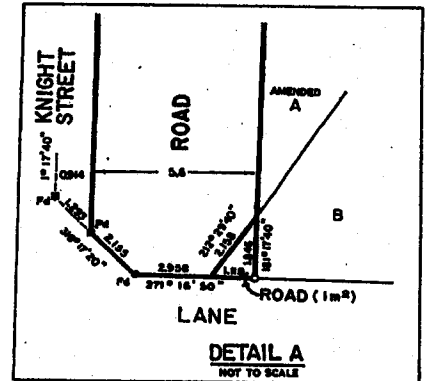
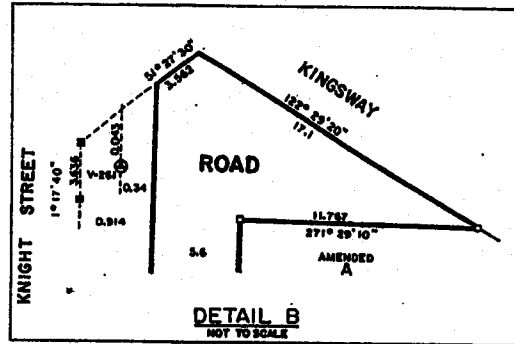
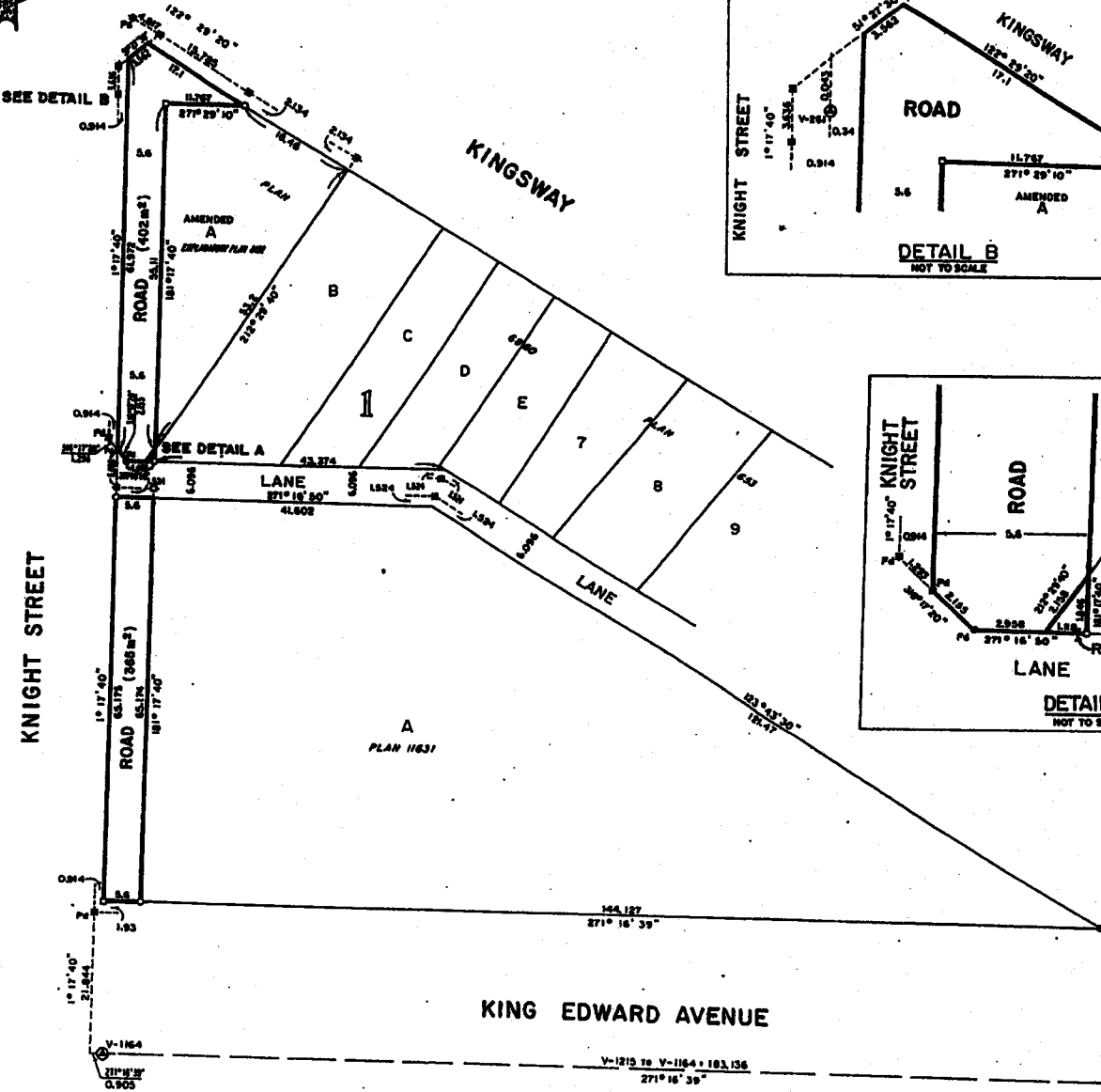
09-M-7

APPENDIX C

REFERENCE PLAN TO ACCOMPANY RESOLUTION OF THE COUNCIL OF CITY OF VANCOUVER ESTABLISHING FOR HIGHWAY PURPOSES A PORTION OF AMENDED LOT A (EXPLANATORY PLAN 8192), EXCEPT PART IN EXPLANATORY PLAN 9254, AND LOT B, BOTH OF LOTS 1 AND 6, NORTH PART OF BLOCKS 1 AND 3, PLAN 6860; AND LOT A, BLOCKS 1 AND 3, PLAN 11631; ALL OF DISTRICT LOT 352, GROUP ONE, NEW WESTMINSTER DISTRICT.

REFERENCE PLAN LMP 8370
 REG. 865774
 DEPOSITED IN THE LAND TITLE OFFICE AT NEW WESTMINSTER, B.C.
 THIS 7 DAY OF JANUARY, 1992.
[Signature]
 Assistant Deputy REGISTRAR

B.C.G.S. 92G.025



INTEGRATED SURVEY AREA NO. 31 CITY OF VANCOUVER.
 THIS PLAN SHOWS GROUND-LEVEL MEASURED DISTANCES, PRIOR TO COMPUTATION OF U.T.M. CO-ORDINATES, MULTIPLY BY COMBINED FACTOR OF 0.9999899737.
 GRID BEARINGS ARE DERIVED FROM OBSERVATIONS BETWEEN CONTROL MONUMENTS V-1215 AND V-1164.

- ⊙ INDICATES CONTROL MONUMENT FOUND
- " LEAD PLUS FOUND
- FN " LEAD PLUS FOUND (UNREGISTERED)
- " LEAD PLUS PLACED
- " STANDARD IRON POST FOUND
- FN " STANDARD IRON POST FOUND (UNREGISTERED)
- " STANDARD IRON POST PLACED

I, JOHN W. LARSON A BRITISH COLUMBIA LAND SURVEYOR, OF THE CITY OF VANCOUVER, IN BRITISH COLUMBIA CERTIFY THAT I WAS PRESENT AT AND PERSONALLY SUPERINTENDED THE SURVEY REPRESENTED BY THIS PLAN AND THAT THE SURVEY AND PLAN ARE CORRECT. THE SURVEY WAS COMPLETED ON THE 22ND DAY OF DECEMBER, 1992.

[Signature]
 J. W. Larson

THIS PLAN LIES WITHIN THE GREATER VANCOUVER REGIONAL DISTRICT.

B.C.L.S.