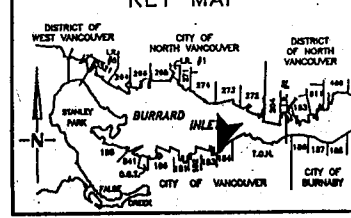


# APPENDIX A

## BURRARD

## INLET



CERTIFIED CORRECT  
on the 25th day of November, 2003.

*C.G. Hamfeldt*  
C.G. HAMFELDT, C.L.S.

LD NO. 1-01-00225

KOZUL HOLDINGS INC.  
LEASE NO. V-4300(01)  
PLAN NO. 94-039

LD NO. 1-01-00224

HMM JUNE 3, 2000

NATURAL BOUNDARY

ACCORDING TO PLAN 5155

PLAN 5155

LMP47343

U.T.M. CO-ORDINATES		
NAD 83 DATUM		
POINT	EASTINGS	NORTHINGS
(A)	495,232.893	5,459,645.434
(B)	495,227.276	5,459,211.186

### PARCEL AREAS

PCL. 'A' (WATER) = 5,323m<sup>2</sup> (57,296ft<sup>2</sup>)

REFERENCES: - 94-039  
- 1-B-2-731

### NOTES:

- DISTANCES ARE SHOWN IN INTERNATIONAL METRES AND DECIMALS THEREOF.
- PRIOR TO COMPUTATION OF U.T.M. CO-ORDINATES, MULTIPLY DISTANCES BY COMBINED SCALE FACTOR 0.99960215.
- FINAL DIMENSIONS AND CO-ORDINATES ARE SUBJECT TO SURVEY.

101° 17' 40"

(A)

15.87±

15.544

0° 44' 28"

343.931

347.280

0° 44' 28"

3060mm Combined Scale Factor

3060mm

91° 34' 10"

6.8±

0° 44' 28"

90.526

0° 44' 28"

DL 183  
DL 184

VICTORIA DR.

1  
2 178  
3  
4  
PLAN

DL 184

PATH: H:\Plans\Lease Plans\2003-lease\2003-095.dwg



VANCOUVER PORT AUTHORITY  
ENGINEERING DEPARTMENT

DESIGN BY  
DRAWN BY  
APPROVED  
DATE November 14, 2003  
SCALE 1:1500  
VIA WRE 070

CITY OF VANCOUVER  
LICENCE AREA COMPRISING A PORTION OF THE BED AND FORESHORE OF BURRARD INLET FRONTING THE NORTH END OF VICTORIA DRIVE, DISTRICT LOTS 183 AND 184, GROUP 1, NEW WESTMINSTER DISTRICT  
CITY OF VANCOUVER  
LICENCE PLAN NO. 2003-095

No.	Date	REVISION	Dr'n Ch'd

SHEET 1 of 1

# APPENDIX B



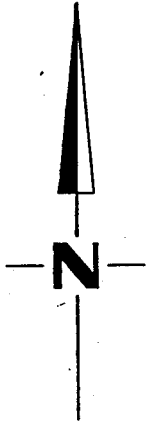
## PARCEL AREAS

PCL. 'A' (LAND) =  $344m^2$  (3,703ft<sup>2</sup>)

PCL. 'B' (WATER) =  $1,197m^2$  (12,884ft<sup>2</sup>)

TOTAL AREA =  $1,541m^2$

TITLE BLOCK



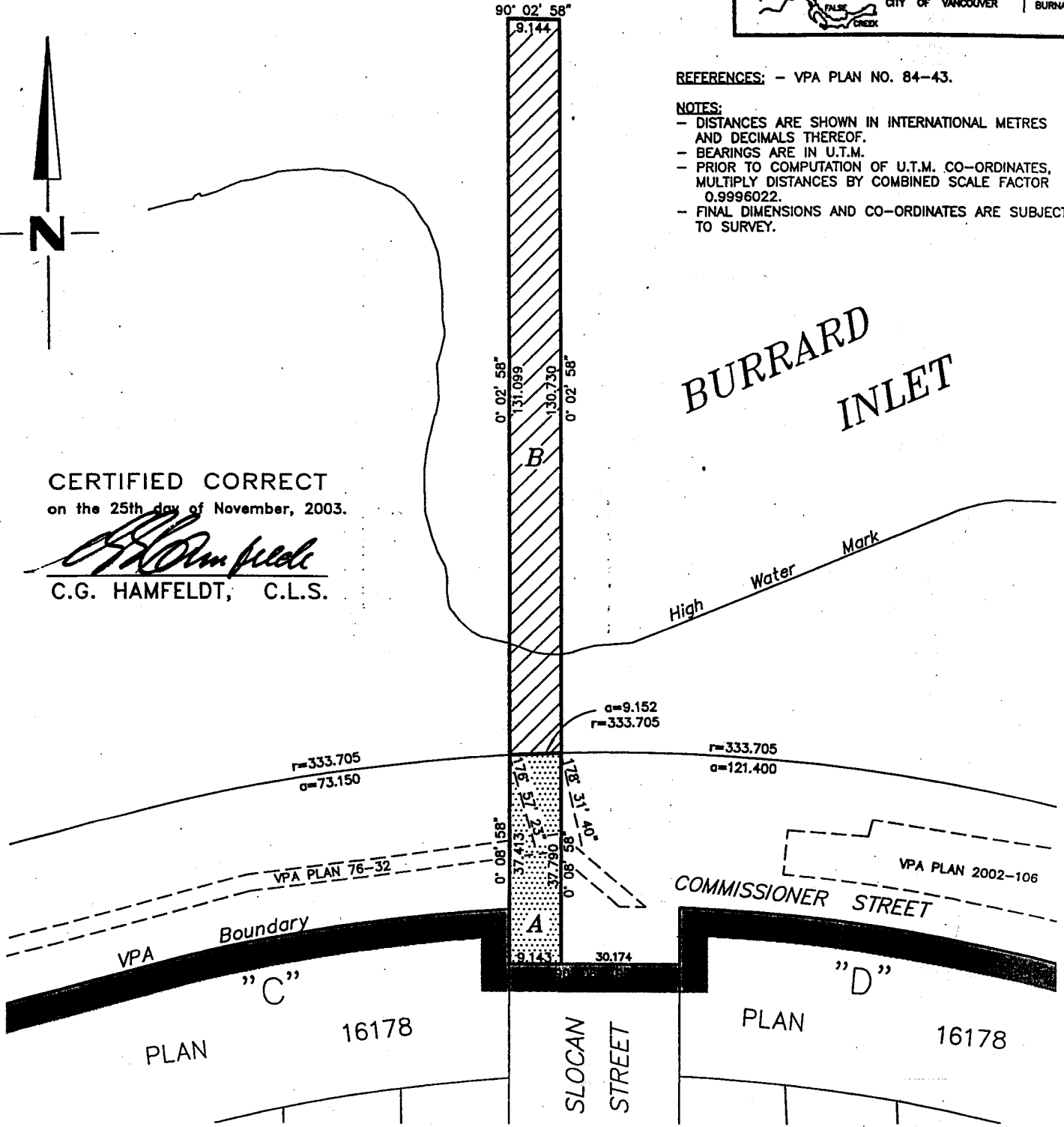
CERTIFIED CORRECT  
on the 25th day of November, 2003.

*C.G. Hamfeldt*  
C.G. HAMFELDT, C.L.S.

REFERENCES: - VPA PLAN NO. 84-43.

### NOTES:

- DISTANCES ARE SHOWN IN INTERNATIONAL METRES AND DECIMALS THEREOF.
- BEARINGS ARE IN U.T.M.
- PRIOR TO COMPUTATION OF U.T.M. CO-ORDINATES, MULTIPLY DISTANCES BY COMBINED SCALE FACTOR 0.9996022.
- FINAL DIMENSIONS AND CO-ORDINATES ARE SUBJECT TO SURVEY.



DATE: 2003/11/25 - 3:02pm  
PATH: H:\Plans\Lease Plans\2003-lease\2003-097.dwg

No.	Date	REVISION	Dr'n	Ch'd

**PORT VANCOUVER**

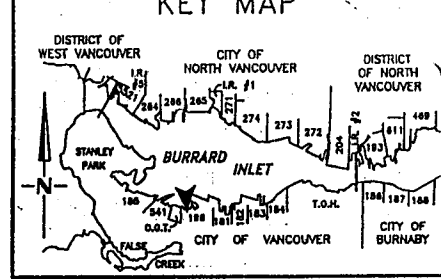
VANCOUVER PORT AUTHORITY  
ENGINEERING DEPARTMENT

DESIGN BY	
DRAWN BY	jkm
APPROVED	
DATE	25/11/2003
SCALE	1:1000
VPA SITE	46, 47

LICENCE AREAS COMPRISING PORTIONS OF THE BED AND FORESHORE OF BURRARD INLET FRONTING THE NORTH END OF SLOCAN STREET, TOWN OF HASTINGS, GROUP 1, NEW WESTMINSTER DISTRICT	
City of Vancouver	
SIZE	DWG.
A	LICENCE PLAN NO. 2003-097
SHEET	REV.
1 of 1	

# BURRARD INLET

## APPENDIX C



REFERENCES: -VPA PLAN 92-053

**NOTES:**

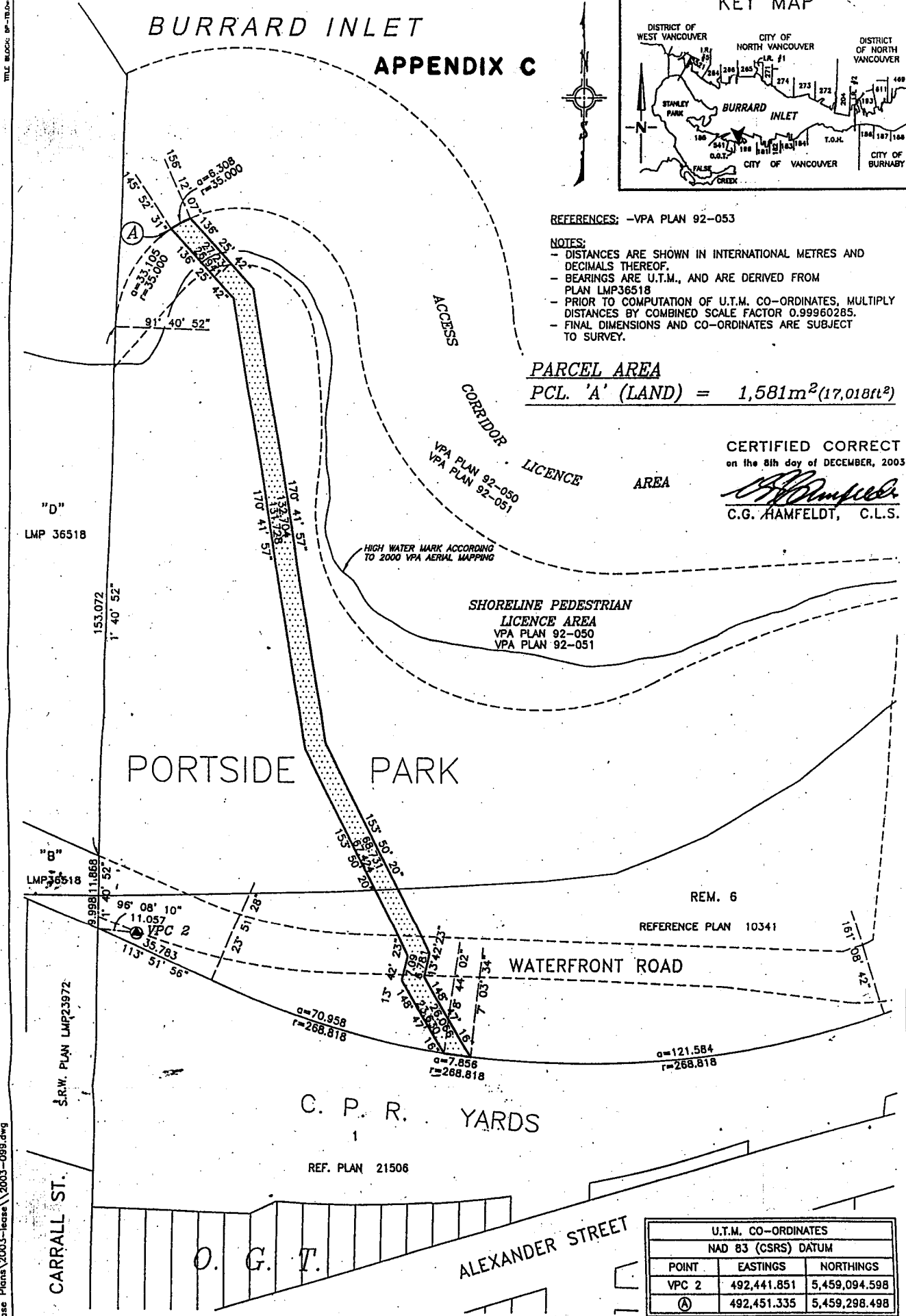
- DISTANCES ARE SHOWN IN INTERNATIONAL METRES AND DECIMALS THEREOF.
- BEARINGS ARE U.T.M., AND ARE DERIVED FROM PLAN LMP36518
- PRIOR TO COMPUTATION OF U.T.M. CO-ORDINATES, MULTIPLY DISTANCES BY COMBINED SCALE FACTOR 0.99960285.
- FINAL DIMENSIONS AND CO-ORDINATES ARE SUBJECT TO SURVEY.

**PARCEL AREA**

PCL. 'A' (LAND) = 1,581m<sup>2</sup>(17,018ft<sup>2</sup>)

CERTIFIED CORRECT  
on the 8th day of DECEMBER, 2003

*C.G. Hamfeldt*  
C.G. HAMFELDT, C.L.S.



"D"  
LMP 36518

"B"  
LMP 36518

S.R.W. PLAN LMP23972  
CARRALL ST.

O. G. T.

REM. 6  
REFERENCE PLAN 10341

C. P. R. YARDS  
REF. PLAN 21506

U.T.M. CO-ORDINATES NAD 83 (CSRS) DATUM		
POINT	EASTINGS	NORTHINGS
VPC 2	492,441.851	5,459,094.598
(A)	492,451.335	5,459,298.498

DATE: 2003/12/08 - 2:40pm  
PATH: H:\Plans\Lease Plans\2003-lease\2003-099.dwg

No.	Date	REVISION	Dr'n Ch'd

**PORT VANCOUVER**

VANCOUVER PORT AUTHORITY  
ENGINEERING DEPARTMENT

DESIGN BY: [ ]  
DRAWN BY: J.S.  
APPROVED: [ ]  
DATE: December 8, 2003  
SCALE: 1:1000  
VPA SHE: 131

CITY OF VANCOUVER

LICENCE AREA OVER A PORTION OF LOT 8 (REFERENCE PLAN 10341) OF THE PUBLIC HARBOUR OF BURRARD INLET AND OF BLOCK 1, DISTRICT LOT 198, GROUP 1, NEW WESTMINSTER DISTRICT, PLAN 184; EXCEPT PART IN PLAN 32160 AND A PORTION OF THE BED OF BURRARD INLET FRONTING SAID LOT 8

8 LICENCE PLAN NO. 2003-099

SHEET 1 of 1