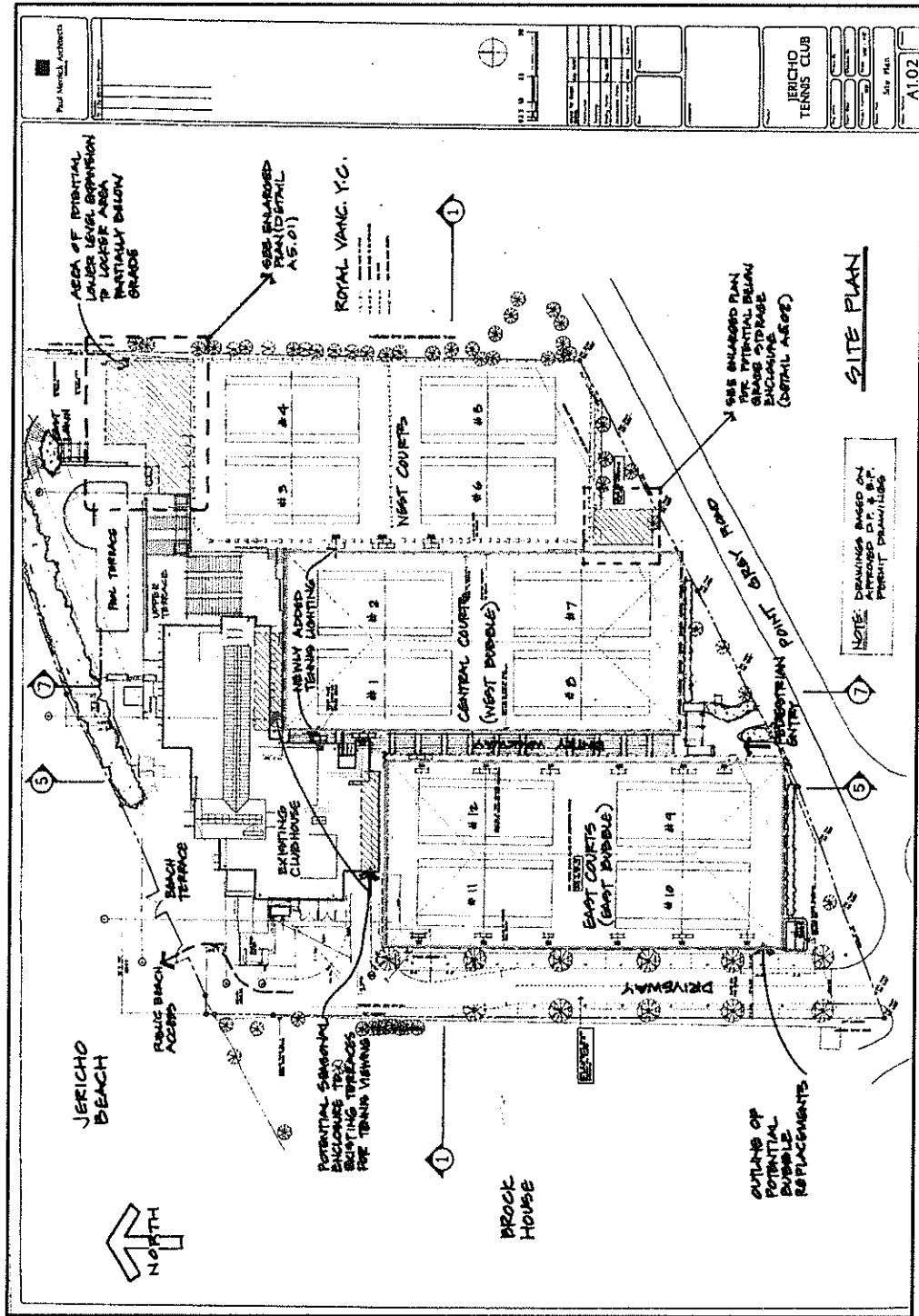


FORM OF DEVELOPMENT

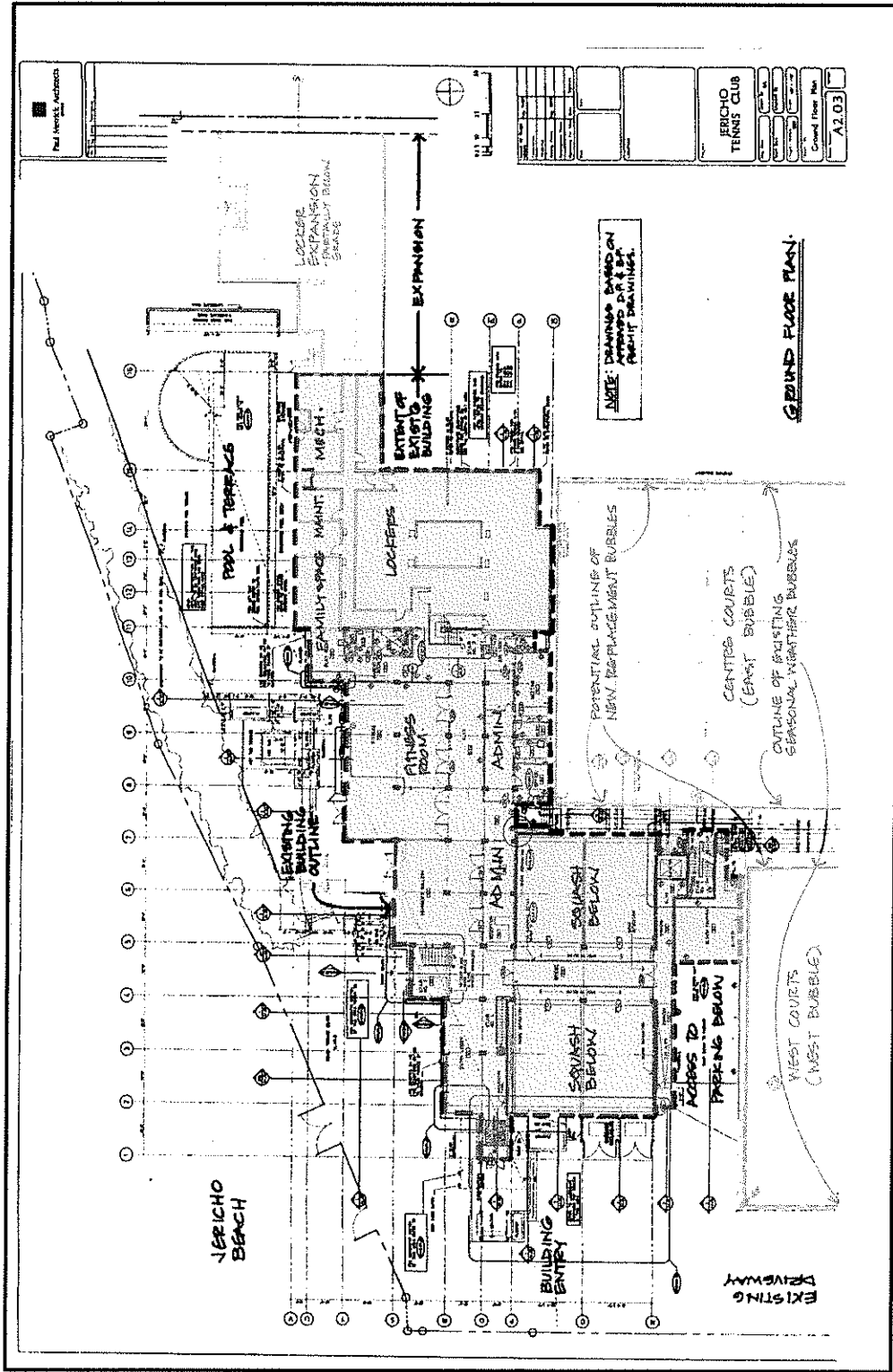
SITE PLAN



Jericho Tennis Club CD-1 Rezoning Application - August 6th, 2003

MERRICK
ARCHITECTURE

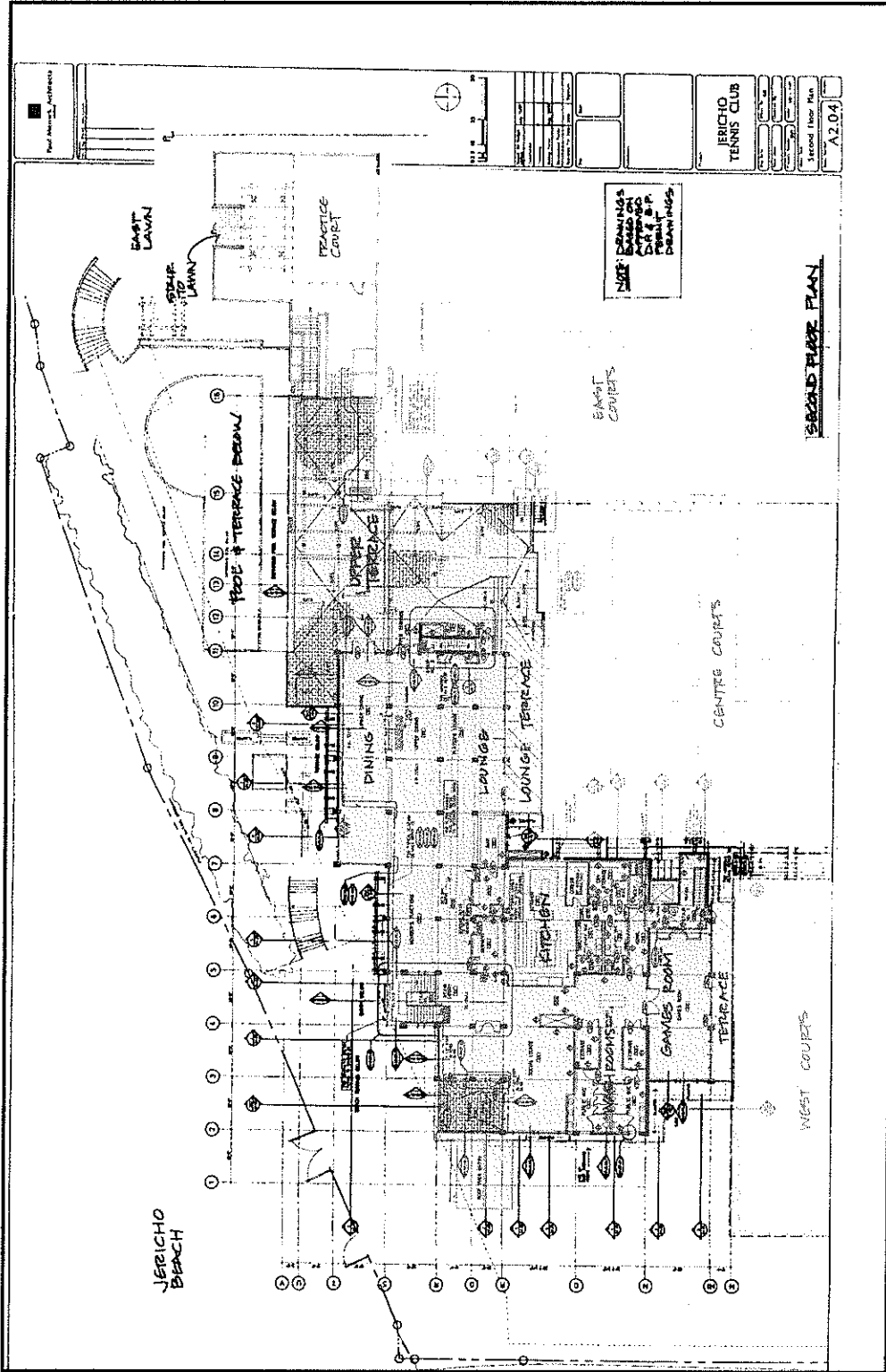
FORM OF DEVELOPMENT
GROUND FLOOR PLAN



Jericho Tennis Club CD-1 Rezoning Application - August 6th, 2003

MERRICK
ARCHITECTURE

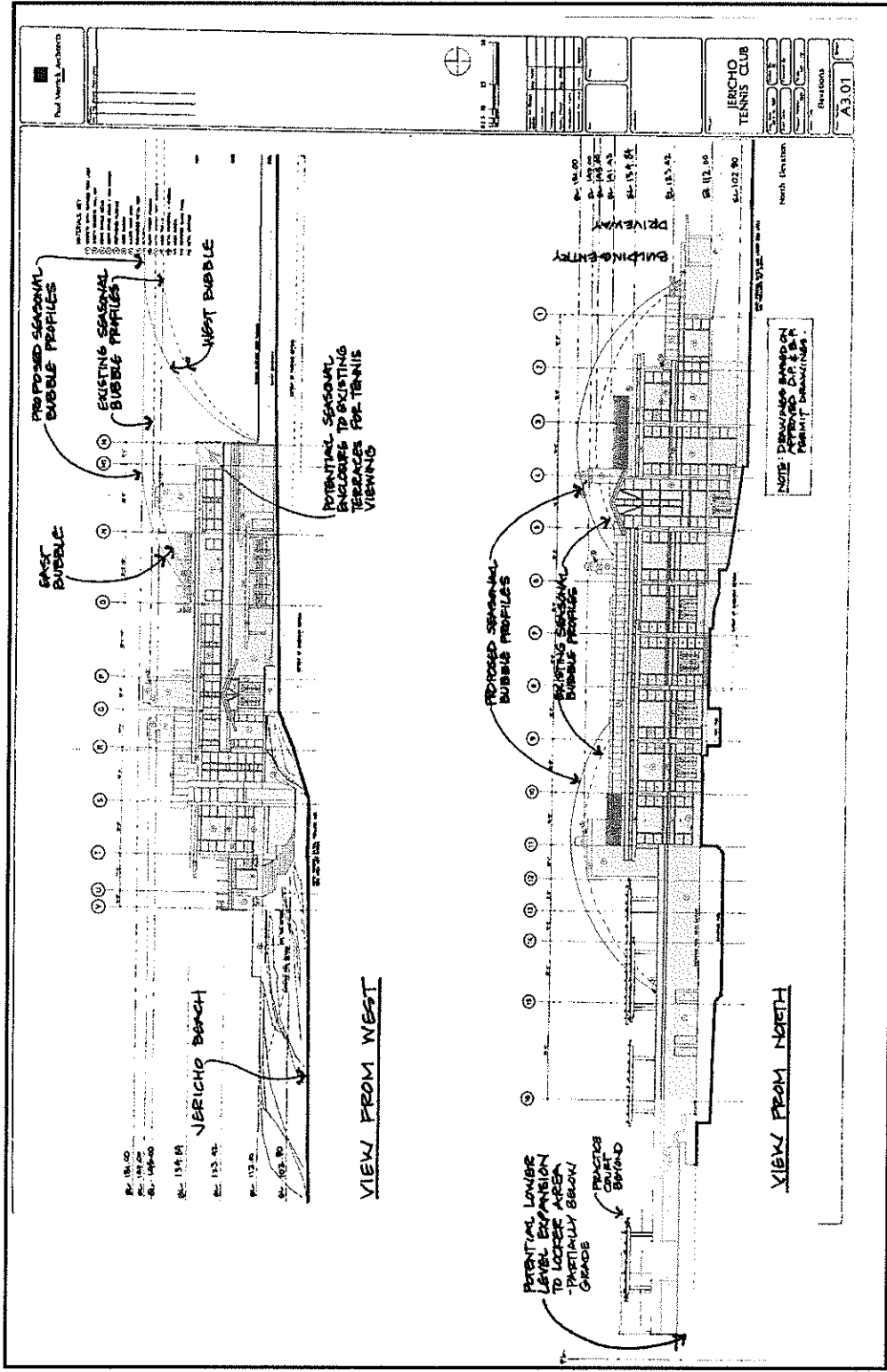
FORM OF DEVELOPMENT
SECOND FLOOR PLAN



Jericho Tennis Club CD-1 Rezoning Application - August 6th, 2003

MERRICK
ARCHITECTURE

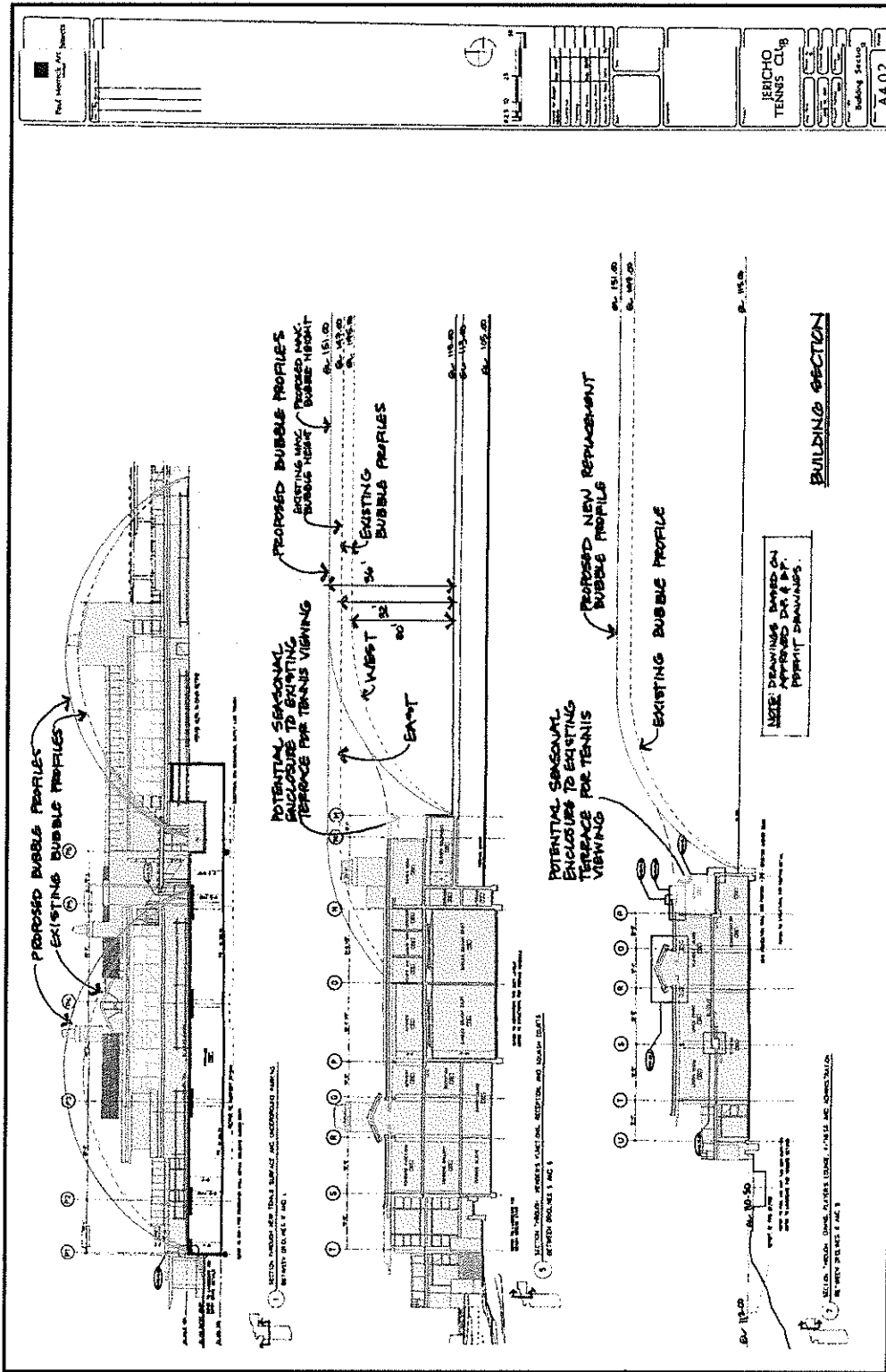
FORM OF DEVELOPMENT
ELEVATIONS



Jericho Tennis Club CD-1 Rezoning Application - August 6th, 2003

MERRICK
ARCHITECTURE

FORM OF DEVELOPMENT
BUILDING SECTION

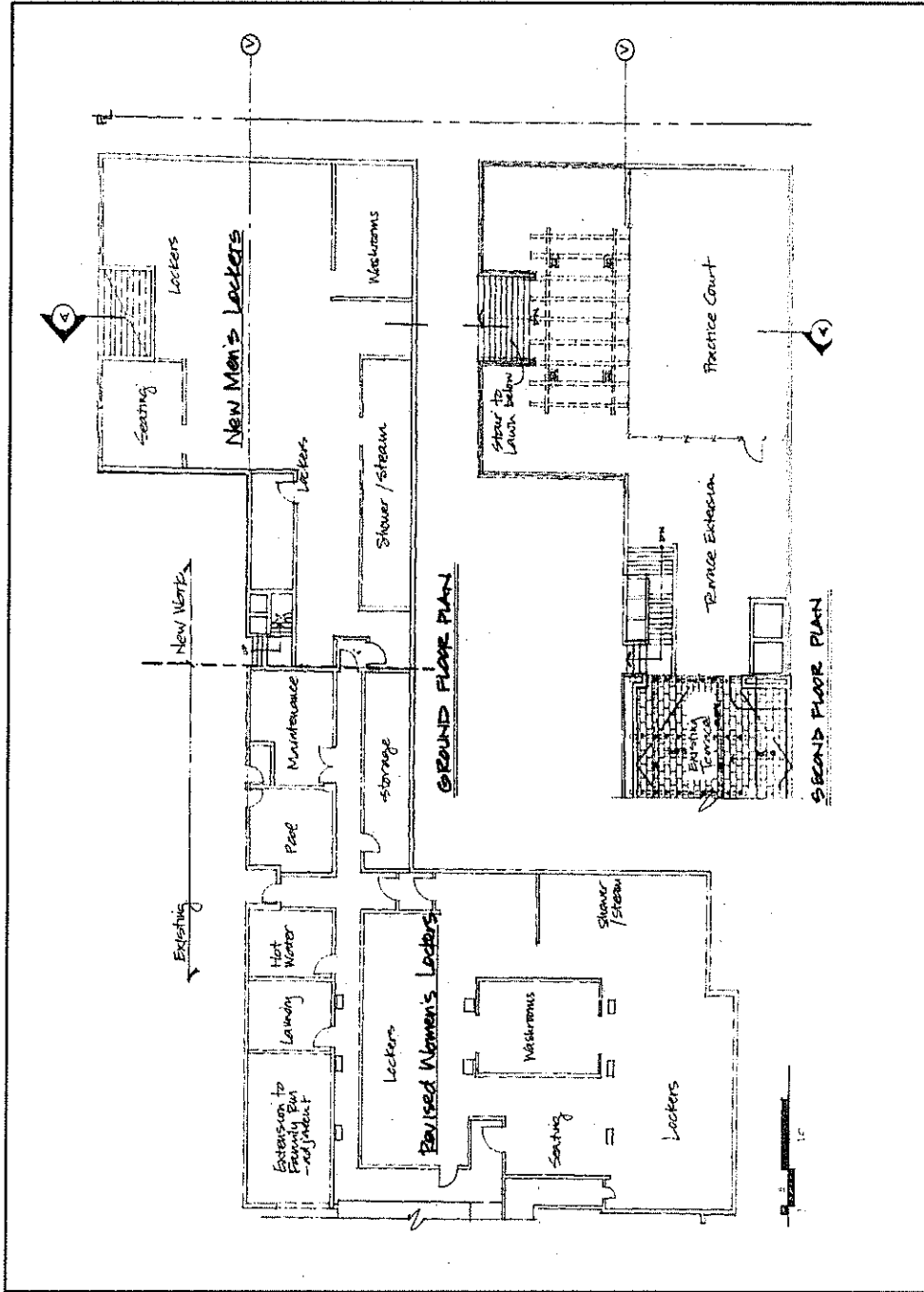


Jericho Tennis Club CD-1 Rezoning Application - August 6th, 2003

MERRICK
ARCHITECTURE

FORM OF DEVELOPMENT

DETAILS (POTENTIAL LOCKER EXPANSION DETAIL - A5.01) - REFER PAGE 8 FOR LOCATION OF THIS AREA



ADULT LOCKER STATISTICS

Current Lockers:
Men 321 lockers
Women 206 lockers
Total: 527

Possible Lockers:
Men 400 lockers
Women 375 lockers
Total: 775

Current Adult Membership:
Total: 1950

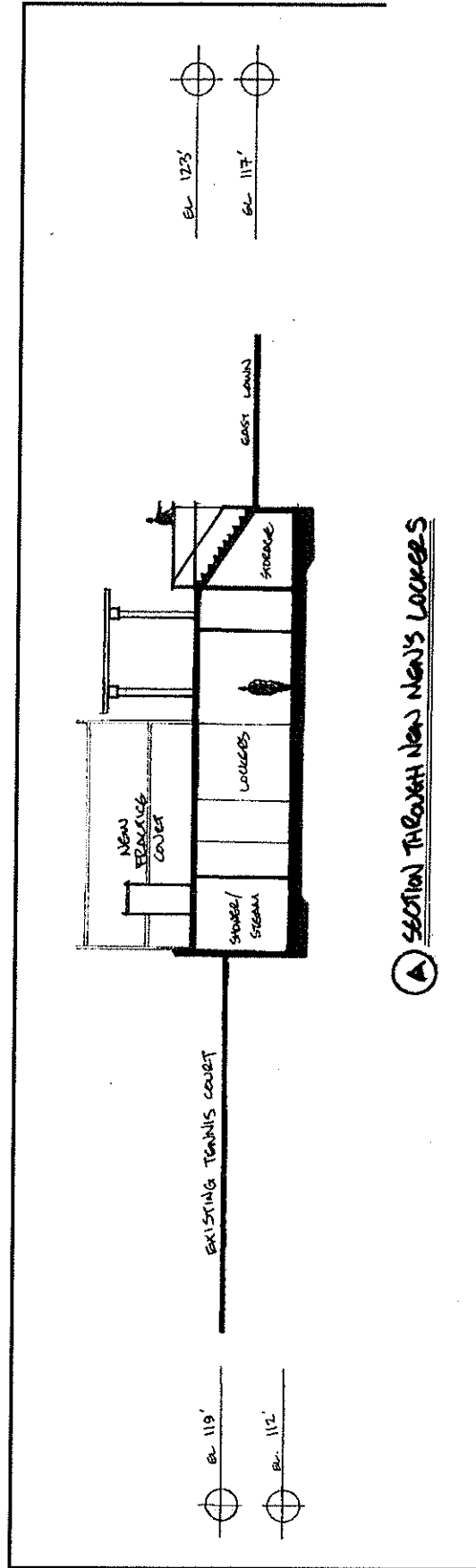
Current Locker Wait List:
Men: 86
Women: 135
Total: 221

M E R R I C K
ARCHITECTURE

Jericho Tennis Club CD-1 Rezoning Application - August 6th, 2003

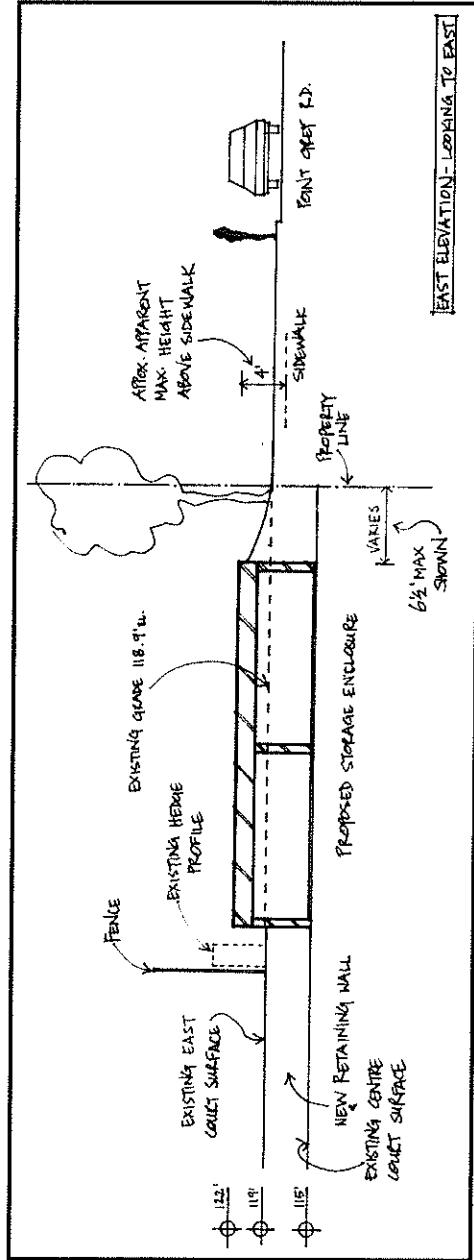
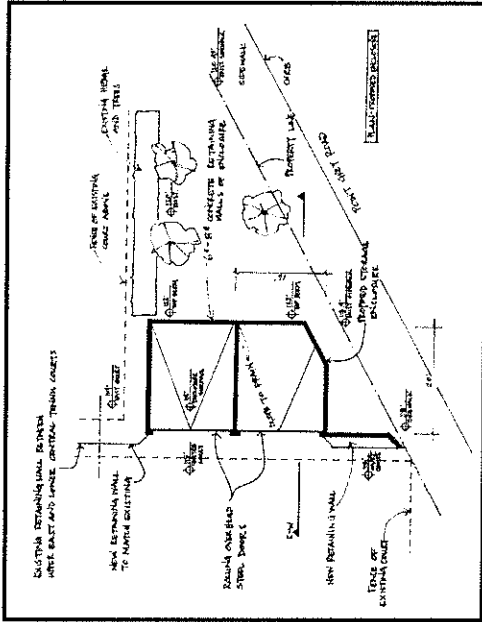
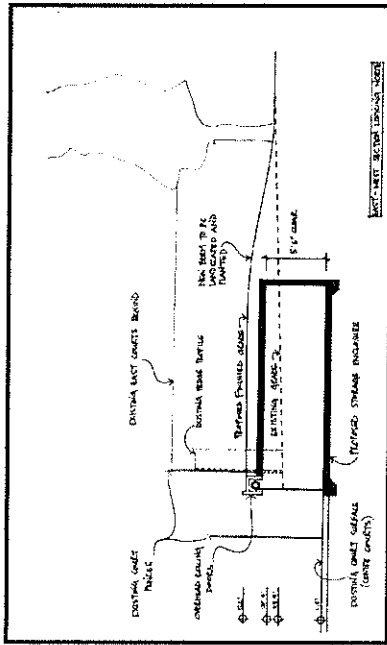
FORM OF DEVELOPMENT

DETAILS (POTENTIAL LOCKER EXPANSION DETAIL - A5.02) - REFER PAGE 8 FOR LOCATION OF THIS AREA



FORM OF DEVELOPMENT

DETAILS (STORAGE ENCLOSURE DETAIL - A5.02) - REFER PAGE 8 FOR LOCATION OF THIS AREA



Jericho Tennis Club CD-1 Rezoning Application - August 6th, 2003

MERRICK
ARCHITECTURE