

--- Zoning Boundary



*Site* : 628 Kinghorne Mews DE408001

- LEGEND
- 1. 0.100 SPOT PLANTING
  - 1. 0.100 PINE SPOT PLANTING
  - 1. 0.100 BALSAM GRASS
  - 1. 0.100 INTERMEDIATE BALSAM GRASS
  - 1. 0.100 TOP OF WALL
  - 1. 0.100 TOP OF SLAB
  - 1. 0.100 TOP OF ROOF
  - 1. 0.100 TOP OF FINISH

DP APPLICATION NO. 15.07.2003  
DATE

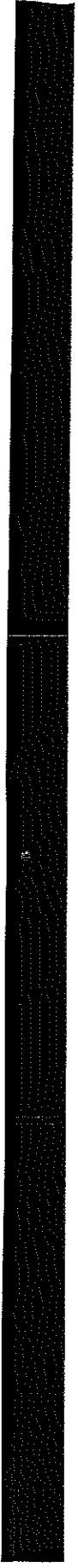
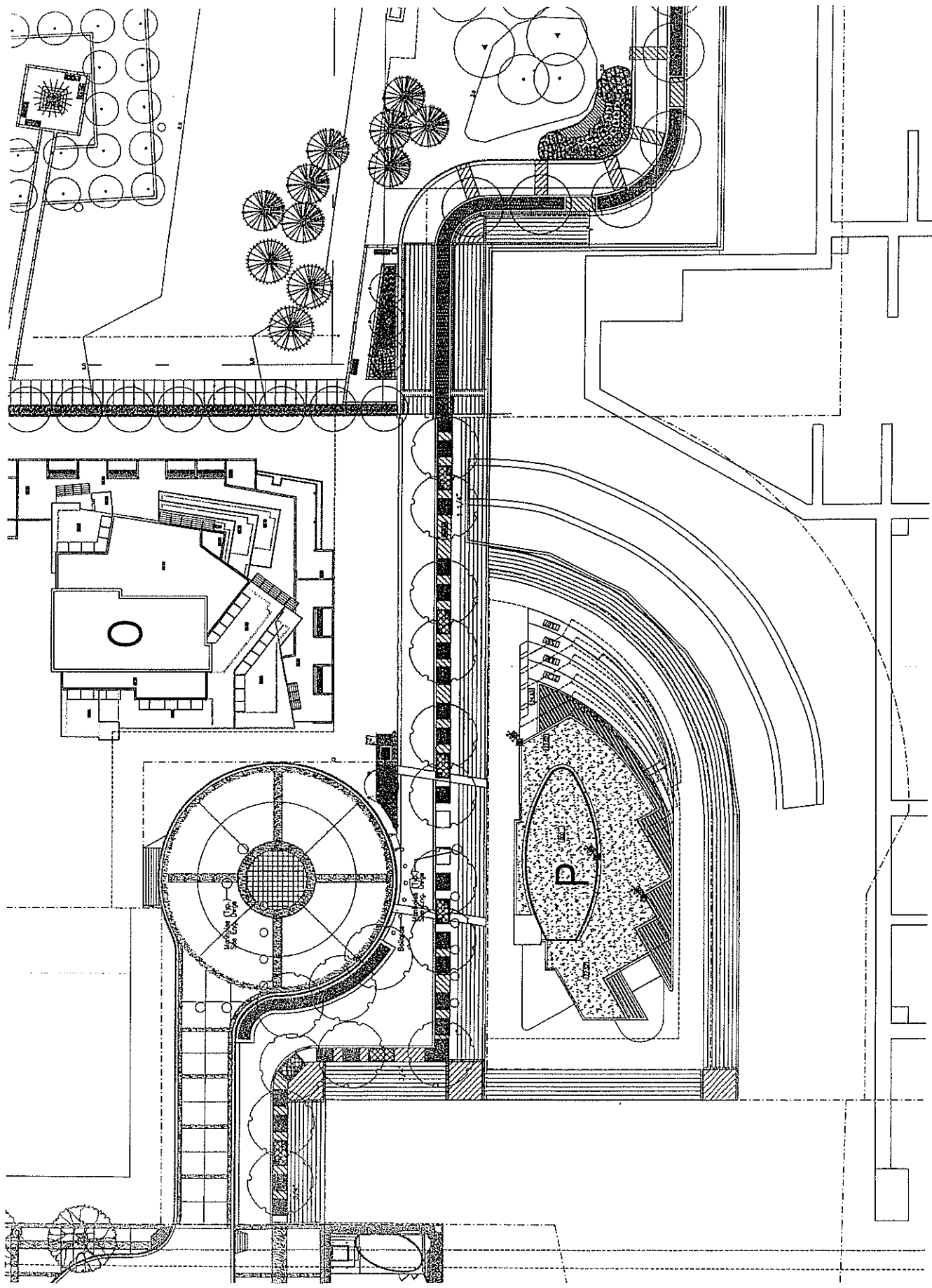
DESCRIPTION  
BUBBY + ASSOCIATES ARCHITECTS  
100 SOUTH STREET  
CONCORD, CA 94520  
TEL: 925.309.1000  
WWW.BUBBY.COM



CONCORD PACIFIC PLACE  
CONCORD, CALIFORNIA  
CONCORD PACIFIC PLACE IS A COMMUNITY DEVELOPMENT PROJECT OF THE CITY OF CONCORD, CALIFORNIA. THE CITY OF CONCORD HAS REVIEWED THE PROJECT AND HAS GRANTED A PERMIT FOR THE PROJECT. THE PROJECT IS SUBJECT TO THE CITY OF CONCORD'S DEVELOPMENT ORDINANCES AND THE CITY OF CONCORD'S DEVELOPMENT DEPARTMENT'S REVIEW AND APPROVAL. THE PROJECT IS SUBJECT TO THE CITY OF CONCORD'S DEVELOPMENT ORDINANCES AND THE CITY OF CONCORD'S DEVELOPMENT DEPARTMENT'S REVIEW AND APPROVAL.

BUILDING 1P  
1650 GRANVILLE STREET  
SITE PLAN

SCALE: 1/200  
DATE: 02/10/03  
DRAWN BY: TM  
CHECKED BY: JM  
APPROVED BY: JM  
PROJECT NO.: 004  
REVISED:

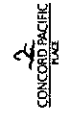




DP400

- LEGEND**
- 1 EXPANDED POLYETHYLENE CONCRETE WITH 10% AIR CONTENT USED TO PROVIDE INSULATION UNDER CONCRETE SLAB ON GRADE
  - 2 100MM (4") POLYSTYRENE INSULATION BOARD
  - 3 100MM (4") POLYSTYRENE INSULATION BOARD
  - 4 100MM (4") POLYSTYRENE INSULATION BOARD
  - 5 100MM (4") POLYSTYRENE INSULATION BOARD
  - 6 100MM (4") POLYSTYRENE INSULATION BOARD
  - 7 100MM (4") POLYSTYRENE INSULATION BOARD
  - 8 100MM (4") POLYSTYRENE INSULATION BOARD
  - 9 100MM (4") POLYSTYRENE INSULATION BOARD
  - 10 100MM (4") POLYSTYRENE INSULATION BOARD
  - 11 100MM (4") POLYSTYRENE INSULATION BOARD
  - 12 100MM (4") POLYSTYRENE INSULATION BOARD
  - 13 100MM (4") POLYSTYRENE INSULATION BOARD
  - 14 100MM (4") POLYSTYRENE INSULATION BOARD
  - 15 100MM (4") POLYSTYRENE INSULATION BOARD
  - 16 100MM (4") POLYSTYRENE INSULATION BOARD
  - 17 100MM (4") POLYSTYRENE INSULATION BOARD
  - 18 100MM (4") POLYSTYRENE INSULATION BOARD
  - 19 100MM (4") POLYSTYRENE INSULATION BOARD
  - 20 100MM (4") POLYSTYRENE INSULATION BOARD
  - 21 100MM (4") POLYSTYRENE INSULATION BOARD
  - 22 100MM (4") POLYSTYRENE INSULATION BOARD
  - 23 100MM (4") POLYSTYRENE INSULATION BOARD
  - 24 100MM (4") POLYSTYRENE INSULATION BOARD
  - 25 100MM (4") POLYSTYRENE INSULATION BOARD
  - 26 100MM (4") POLYSTYRENE INSULATION BOARD
  - 27 100MM (4") POLYSTYRENE INSULATION BOARD
  - 28 100MM (4") POLYSTYRENE INSULATION BOARD
  - 29 100MM (4") POLYSTYRENE INSULATION BOARD
  - 30 100MM (4") POLYSTYRENE INSULATION BOARD
  - 31 100MM (4") POLYSTYRENE INSULATION BOARD
  - 32 100MM (4") POLYSTYRENE INSULATION BOARD
  - 33 100MM (4") POLYSTYRENE INSULATION BOARD
  - 34 100MM (4") POLYSTYRENE INSULATION BOARD
  - 35 100MM (4") POLYSTYRENE INSULATION BOARD
  - 36 100MM (4") POLYSTYRENE INSULATION BOARD
  - 37 100MM (4") POLYSTYRENE INSULATION BOARD
  - 38 100MM (4") POLYSTYRENE INSULATION BOARD
  - 39 100MM (4") POLYSTYRENE INSULATION BOARD
  - 40 100MM (4") POLYSTYRENE INSULATION BOARD
  - 41 100MM (4") POLYSTYRENE INSULATION BOARD
  - 42 100MM (4") POLYSTYRENE INSULATION BOARD
  - 43 100MM (4") POLYSTYRENE INSULATION BOARD
  - 44 100MM (4") POLYSTYRENE INSULATION BOARD
  - 45 100MM (4") POLYSTYRENE INSULATION BOARD
  - 46 100MM (4") POLYSTYRENE INSULATION BOARD
  - 47 100MM (4") POLYSTYRENE INSULATION BOARD
  - 48 100MM (4") POLYSTYRENE INSULATION BOARD
  - 49 100MM (4") POLYSTYRENE INSULATION BOARD
  - 50 100MM (4") POLYSTYRENE INSULATION BOARD
  - 51 100MM (4") POLYSTYRENE INSULATION BOARD
  - 52 100MM (4") POLYSTYRENE INSULATION BOARD
  - 53 100MM (4") POLYSTYRENE INSULATION BOARD
  - 54 100MM (4") POLYSTYRENE INSULATION BOARD
  - 55 100MM (4") POLYSTYRENE INSULATION BOARD
  - 56 100MM (4") POLYSTYRENE INSULATION BOARD
  - 57 100MM (4") POLYSTYRENE INSULATION BOARD
  - 58 100MM (4") POLYSTYRENE INSULATION BOARD
  - 59 100MM (4") POLYSTYRENE INSULATION BOARD
  - 60 100MM (4") POLYSTYRENE INSULATION BOARD
  - 61 100MM (4") POLYSTYRENE INSULATION BOARD
  - 62 100MM (4") POLYSTYRENE INSULATION BOARD
  - 63 100MM (4") POLYSTYRENE INSULATION BOARD
  - 64 100MM (4") POLYSTYRENE INSULATION BOARD
  - 65 100MM (4") POLYSTYRENE INSULATION BOARD
  - 66 100MM (4") POLYSTYRENE INSULATION BOARD
  - 67 100MM (4") POLYSTYRENE INSULATION BOARD
  - 68 100MM (4") POLYSTYRENE INSULATION BOARD
  - 69 100MM (4") POLYSTYRENE INSULATION BOARD
  - 70 100MM (4") POLYSTYRENE INSULATION BOARD
  - 71 100MM (4") POLYSTYRENE INSULATION BOARD
  - 72 100MM (4") POLYSTYRENE INSULATION BOARD
  - 73 100MM (4") POLYSTYRENE INSULATION BOARD
  - 74 100MM (4") POLYSTYRENE INSULATION BOARD
  - 75 100MM (4") POLYSTYRENE INSULATION BOARD
  - 76 100MM (4") POLYSTYRENE INSULATION BOARD
  - 77 100MM (4") POLYSTYRENE INSULATION BOARD
  - 78 100MM (4") POLYSTYRENE INSULATION BOARD
  - 79 100MM (4") POLYSTYRENE INSULATION BOARD
  - 80 100MM (4") POLYSTYRENE INSULATION BOARD
  - 81 100MM (4") POLYSTYRENE INSULATION BOARD
  - 82 100MM (4") POLYSTYRENE INSULATION BOARD
  - 83 100MM (4") POLYSTYRENE INSULATION BOARD
  - 84 100MM (4") POLYSTYRENE INSULATION BOARD
  - 85 100MM (4") POLYSTYRENE INSULATION BOARD
  - 86 100MM (4") POLYSTYRENE INSULATION BOARD
  - 87 100MM (4") POLYSTYRENE INSULATION BOARD
  - 88 100MM (4") POLYSTYRENE INSULATION BOARD
  - 89 100MM (4") POLYSTYRENE INSULATION BOARD
  - 90 100MM (4") POLYSTYRENE INSULATION BOARD
  - 91 100MM (4") POLYSTYRENE INSULATION BOARD
  - 92 100MM (4") POLYSTYRENE INSULATION BOARD
  - 93 100MM (4") POLYSTYRENE INSULATION BOARD
  - 94 100MM (4") POLYSTYRENE INSULATION BOARD
  - 95 100MM (4") POLYSTYRENE INSULATION BOARD
  - 96 100MM (4") POLYSTYRENE INSULATION BOARD
  - 97 100MM (4") POLYSTYRENE INSULATION BOARD
  - 98 100MM (4") POLYSTYRENE INSULATION BOARD
  - 99 100MM (4") POLYSTYRENE INSULATION BOARD
  - 100 100MM (4") POLYSTYRENE INSULATION BOARD

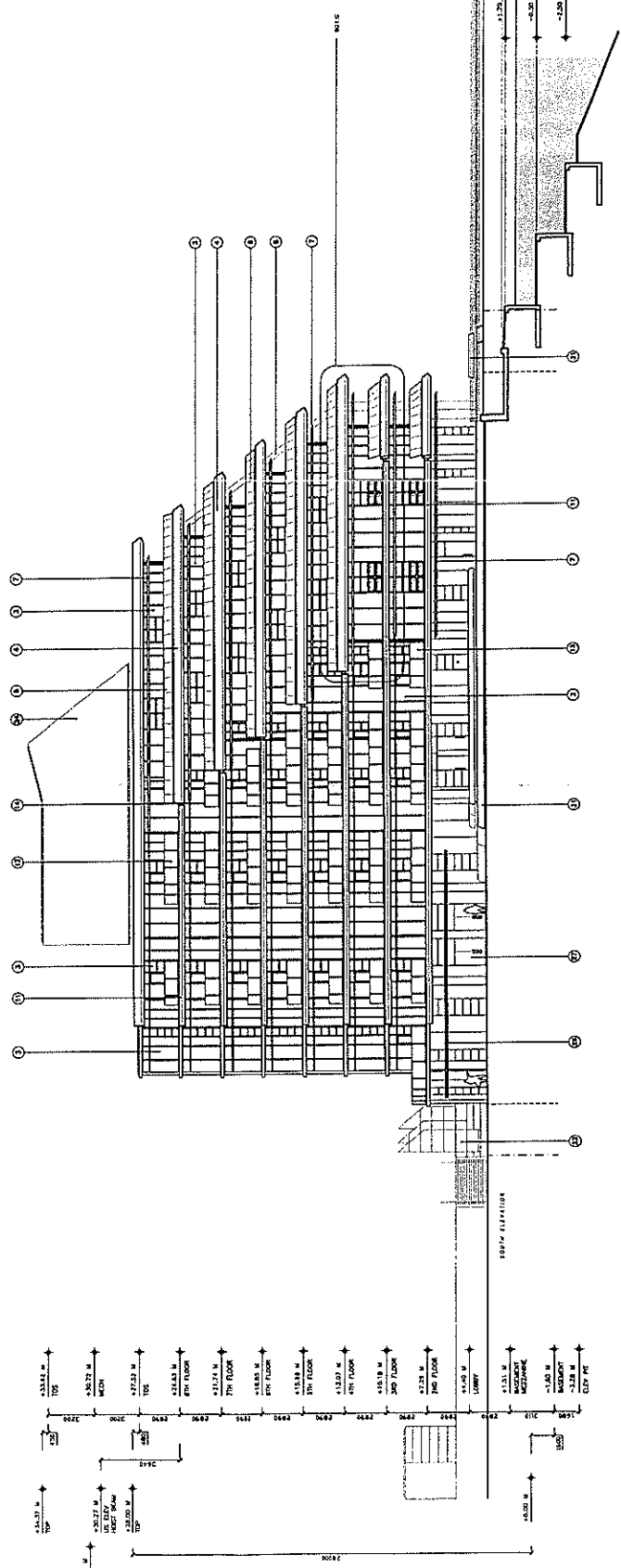
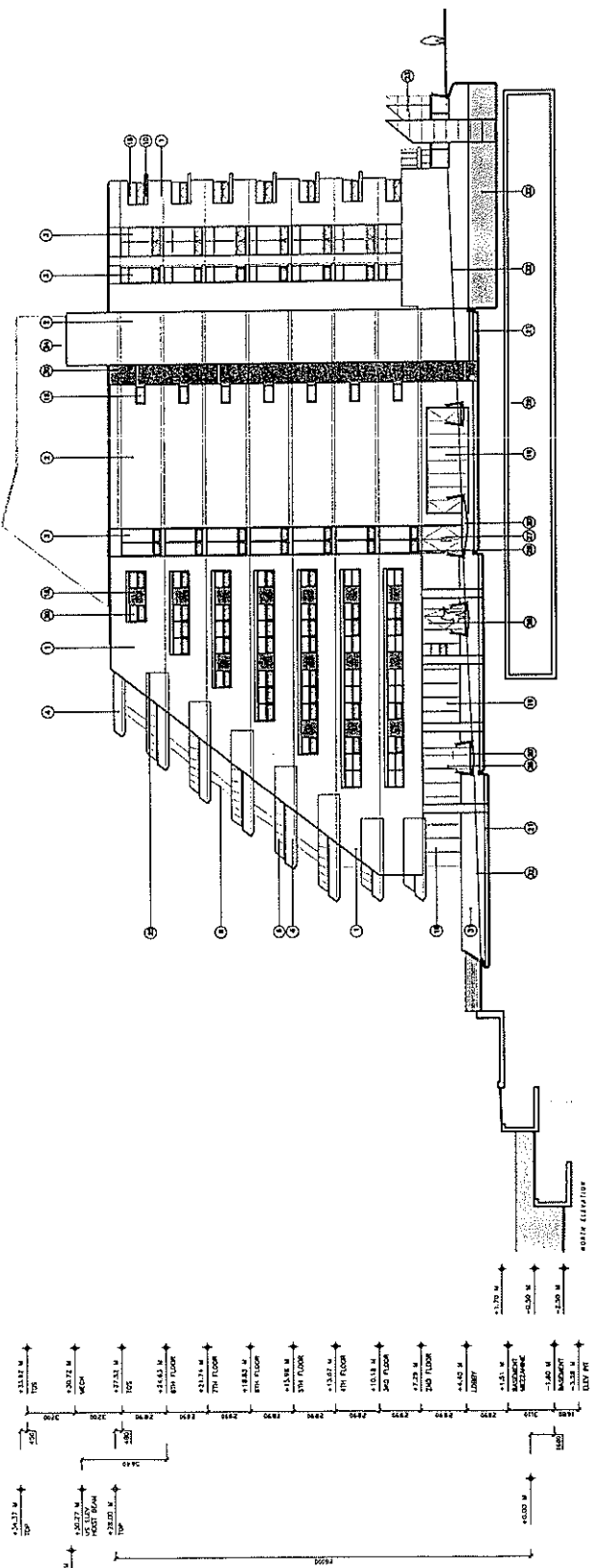
BY: BUFBY + ASSOCIATES ARCHITECTS  
DATE: 10/13/2011



CONCORD PACIFIC  
1000 WEST BAYVIEW AVENUE  
SUITE 1000  
VANCOUVER, BC V6P 6E6  
TEL: 604.271.1111  
WWW.CONCORDPACIFIC.COM

1 BUILDING 1P  
1650 GRANVILLE STREET  
NORTH ELEVATION  
SOUTH ELEVATION

SCALE: 1/150  
DATE: 10/13/2011  
DRAWN BY: JH  
CHECKED BY: JH  
APPROVED BY: JH  
PROJECT NO: DP400



DP401

- LEGEND:**
- 1 CONCRETE STRUCTURAL CONCRETE WITH REINFORCING BARS
  - 2 EXPOSED ARCHITECTURAL CONCRETE WITH REINFORCING BARS
  - 3 POLYURETHANE INSULATION
  - 4 100 MESH ALUMINUM WINDOW WALL SYSTEM
  - 5 100 MESH ALUMINUM WINDOW WALL SYSTEM
  - 6 100 MESH ALUMINUM WINDOW WALL SYSTEM
  - 7 100 MESH ALUMINUM WINDOW WALL SYSTEM
  - 8 100 MESH ALUMINUM WINDOW WALL SYSTEM
  - 9 100 MESH ALUMINUM WINDOW WALL SYSTEM
  - 10 100 MESH ALUMINUM WINDOW WALL SYSTEM
  - 11 100 MESH ALUMINUM WINDOW WALL SYSTEM
  - 12 100 MESH ALUMINUM WINDOW WALL SYSTEM
  - 13 100 MESH ALUMINUM WINDOW WALL SYSTEM
  - 14 100 MESH ALUMINUM WINDOW WALL SYSTEM
  - 15 100 MESH ALUMINUM WINDOW WALL SYSTEM
  - 16 100 MESH ALUMINUM WINDOW WALL SYSTEM
  - 17 100 MESH ALUMINUM WINDOW WALL SYSTEM
  - 18 100 MESH ALUMINUM WINDOW WALL SYSTEM
  - 19 100 MESH ALUMINUM WINDOW WALL SYSTEM
  - 20 100 MESH ALUMINUM WINDOW WALL SYSTEM
  - 21 100 MESH ALUMINUM WINDOW WALL SYSTEM
  - 22 100 MESH ALUMINUM WINDOW WALL SYSTEM
  - 23 100 MESH ALUMINUM WINDOW WALL SYSTEM
  - 24 100 MESH ALUMINUM WINDOW WALL SYSTEM
  - 25 100 MESH ALUMINUM WINDOW WALL SYSTEM
  - 26 100 MESH ALUMINUM WINDOW WALL SYSTEM
  - 27 100 MESH ALUMINUM WINDOW WALL SYSTEM
  - 28 100 MESH ALUMINUM WINDOW WALL SYSTEM
  - 29 100 MESH ALUMINUM WINDOW WALL SYSTEM
  - 30 100 MESH ALUMINUM WINDOW WALL SYSTEM
  - 31 100 MESH ALUMINUM WINDOW WALL SYSTEM
  - 32 100 MESH ALUMINUM WINDOW WALL SYSTEM
  - 33 100 MESH ALUMINUM WINDOW WALL SYSTEM
  - 34 100 MESH ALUMINUM WINDOW WALL SYSTEM
  - 35 100 MESH ALUMINUM WINDOW WALL SYSTEM
  - 36 100 MESH ALUMINUM WINDOW WALL SYSTEM
  - 37 100 MESH ALUMINUM WINDOW WALL SYSTEM
  - 38 100 MESH ALUMINUM WINDOW WALL SYSTEM
  - 39 100 MESH ALUMINUM WINDOW WALL SYSTEM
  - 40 100 MESH ALUMINUM WINDOW WALL SYSTEM
  - 41 100 MESH ALUMINUM WINDOW WALL SYSTEM
  - 42 100 MESH ALUMINUM WINDOW WALL SYSTEM
  - 43 100 MESH ALUMINUM WINDOW WALL SYSTEM
  - 44 100 MESH ALUMINUM WINDOW WALL SYSTEM
  - 45 100 MESH ALUMINUM WINDOW WALL SYSTEM
  - 46 100 MESH ALUMINUM WINDOW WALL SYSTEM
  - 47 100 MESH ALUMINUM WINDOW WALL SYSTEM
  - 48 100 MESH ALUMINUM WINDOW WALL SYSTEM
  - 49 100 MESH ALUMINUM WINDOW WALL SYSTEM
  - 50 100 MESH ALUMINUM WINDOW WALL SYSTEM

DATE: 10/27/2010  
 NO. DESCRIPTION: EAST ELEVATION

**BUSSBY + ASSOCIATES ARCHITECTS**  
 1000 WEST 10TH AVENUE  
 SUITE 1000  
 DENVER, CO 80202  
 TEL: 303.733.1111  
 FAX: 303.733.1112

**CONCRETE PACIFIC**  
 1000 WEST 10TH AVENUE  
 SUITE 1000  
 DENVER, CO 80202  
 TEL: 303.733.1111  
 FAX: 303.733.1112

**BUILDING 1P**  
**1650 GRANVILLE STREET**  
 WEST ELEVATION  
 EAST ELEVATION

SCALE: 1/8" = 1'-0"  
 DATE: 10/27/2010  
 DRAWN BY: [Name]  
 CHECKED BY: [Name]  
 PROJECT NO.: DP401  
 REVISION:

