

Appendix A

		Existing rates	Proposed rates 2004*	Proposed rates 2005*
Downtown area				
	Central Core	\$2.00	\$2.00/\$3.00	No Change
		\$4.00	Reduce 1000/ 1100 Cordova to \$2.00/\$3.00	No Change
	Downtown South	\$1.50	\$1.50/\$2.00	No Change
	Downtown Stadium	\$1.50	No Change	No Change
	Robson Street	\$1.50	No Change	\$2.00
		\$2.00	\$2.00/\$3.00	\$2.50/\$3.00
	Coal Harbour	\$1.50	No Change	No Change
	Denman Street	\$1.50	No Change	\$2.00
	Davie Street	\$1.50	No Change	\$2.00
	Gastown	\$1.50	No Change	\$2.00
	Chinatown	\$1.00/\$1.50	Reduce Columbia to \$1.00	No Change
	Yaletown	\$2.00	No Change	\$2.50
Central Broadway				
	Broadway/Mt Pleasant	\$1.00	No Change	\$1.00/\$1.50
	West Broadway	\$1.50/\$2.00	No Change	\$1.50/\$2.50
	VGH	\$2.00	No Change	\$2.50
	South Granville	\$1.00/\$1.50	\$1.50	No Change
	Burrard Slopes	\$1.00	No Change	No Change
	Main Street	\$1.00	No Change	No Change
	Cambie Street	\$1.00	No Change	No Change
Kerrisdale		\$1.00	\$1.00/\$1.50	No Change
Kitsilano	4 th Avenue	\$1.00	No Change	No Change
	Broadway	\$1.00	No Change	No Change
Commercial Dr		\$1.00	No Change	No Change

Total number of meter spaces - 7262 - average rate - 2003 \$1.60/hr

- 2004 \$1.65/hr + 3.1%

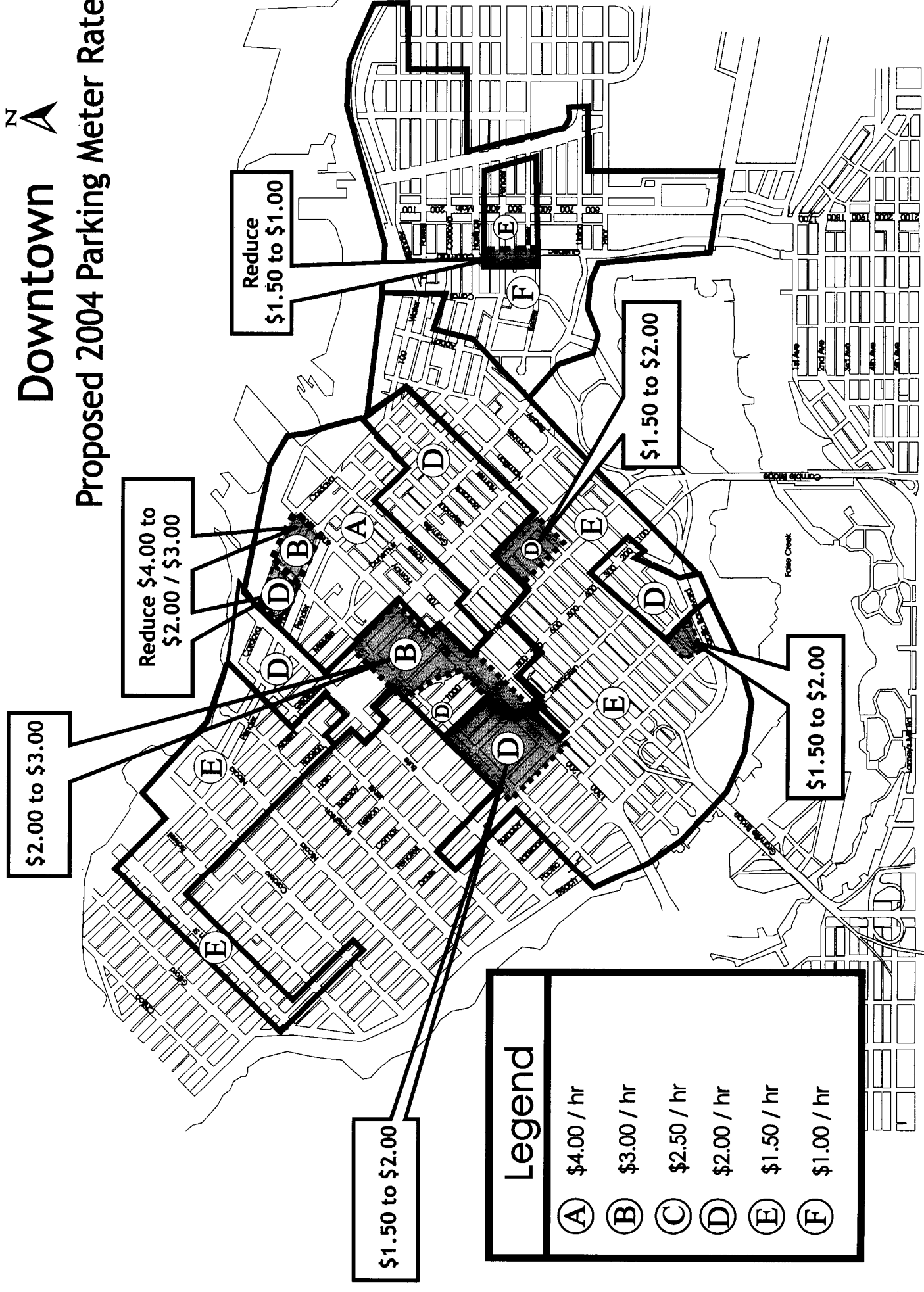
- 2005 \$1.71/hr + 3.6%

*for details see attached schedules



Downtown

Proposed 2004 Parking Meter Rates

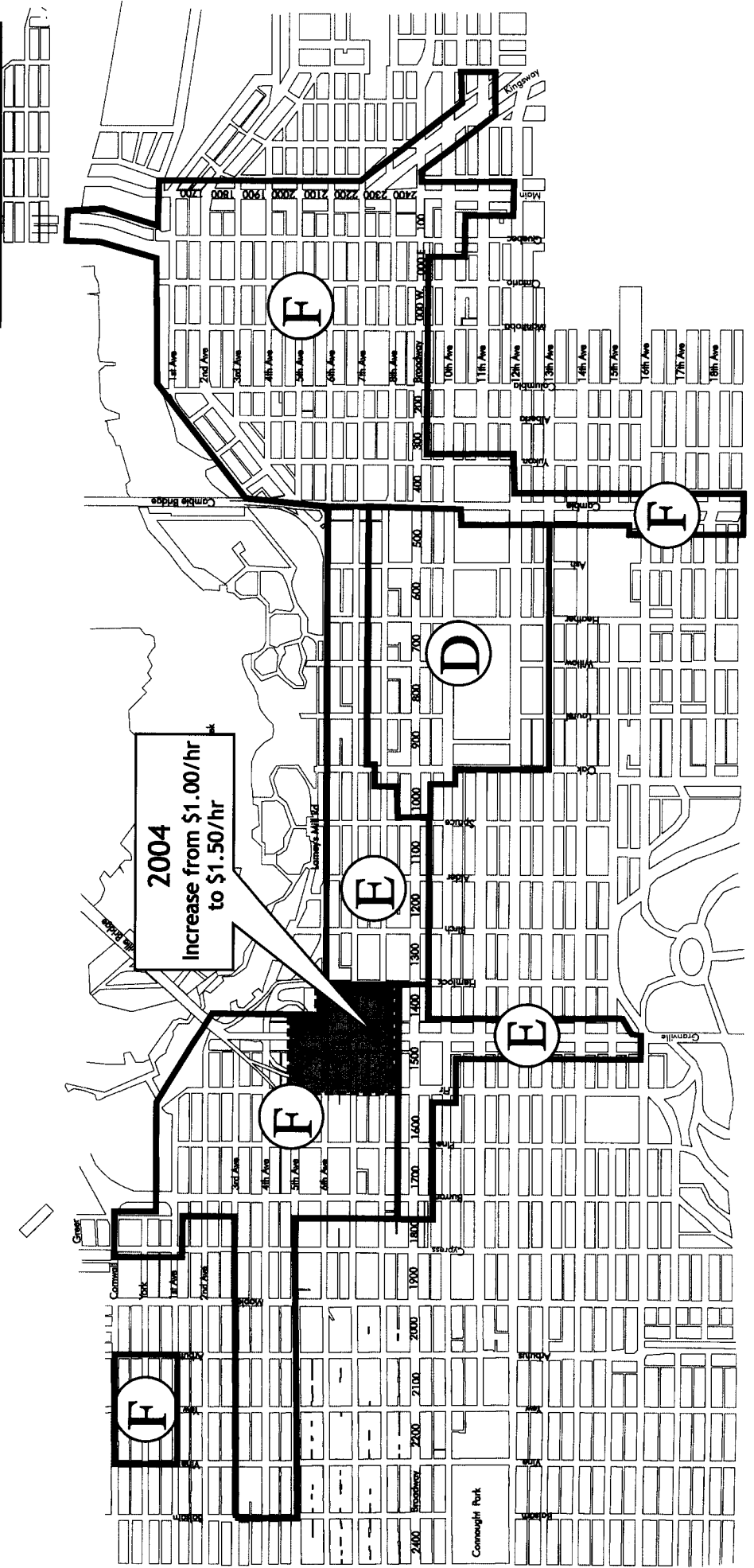


Legend	
(A)	\$4.00 / hr
(B)	\$3.00 / hr
(C)	\$2.50 / hr
(D)	\$2.00 / hr
(E)	\$1.50 / hr
(F)	\$1.00 / hr

Broadway Corridor 2004 Proposed Parking Meter Rates

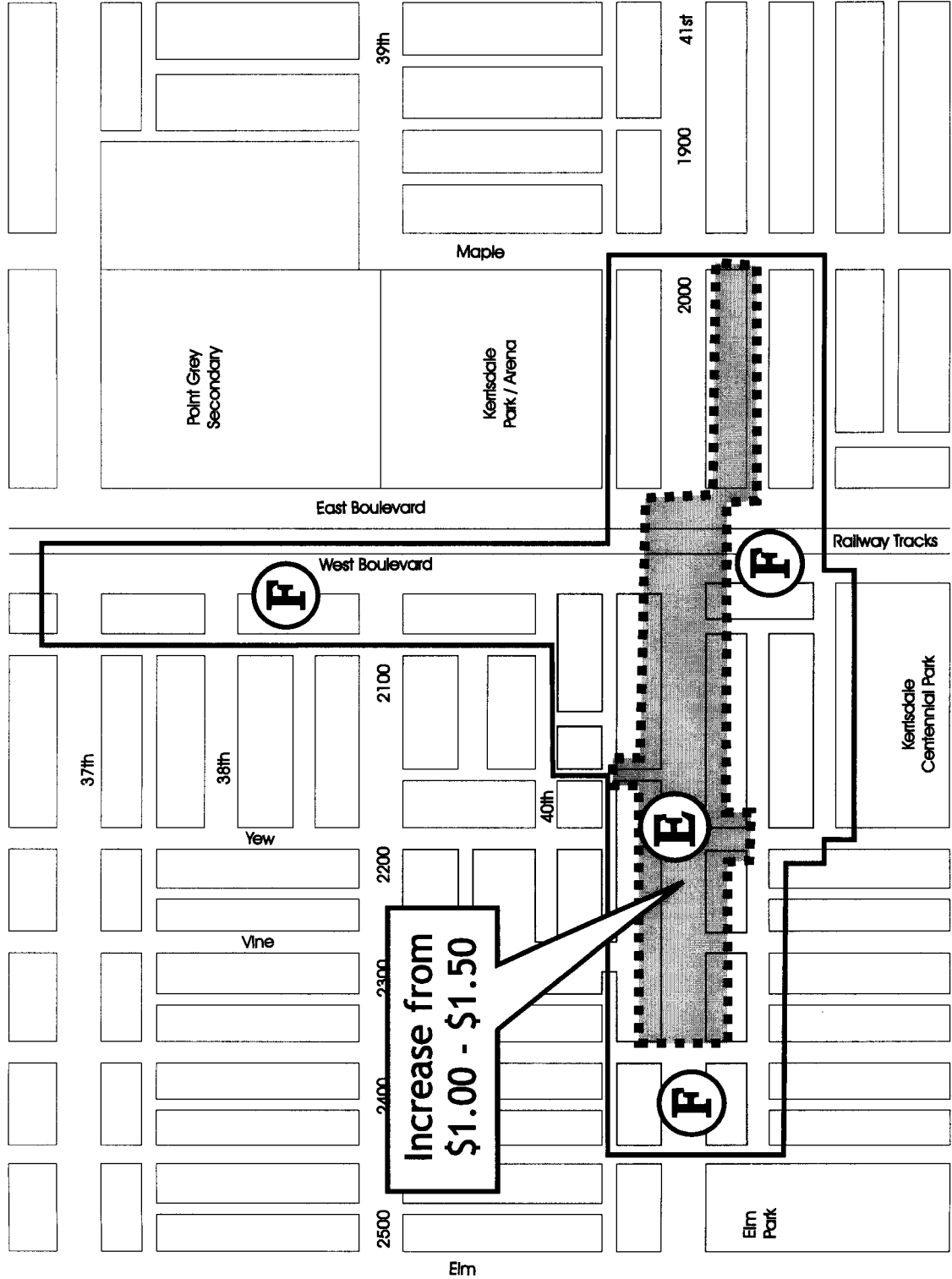


Legend	
(A)	\$4.00 / hr
(B)	\$3.00 / hr
(C)	\$2.50 / hr
(D)	\$2.00 / hr
(E)	\$1.50 / hr
(F)	\$1.00 / hr



Kerrisdale

Proposed 2004 Parking Meter Rates

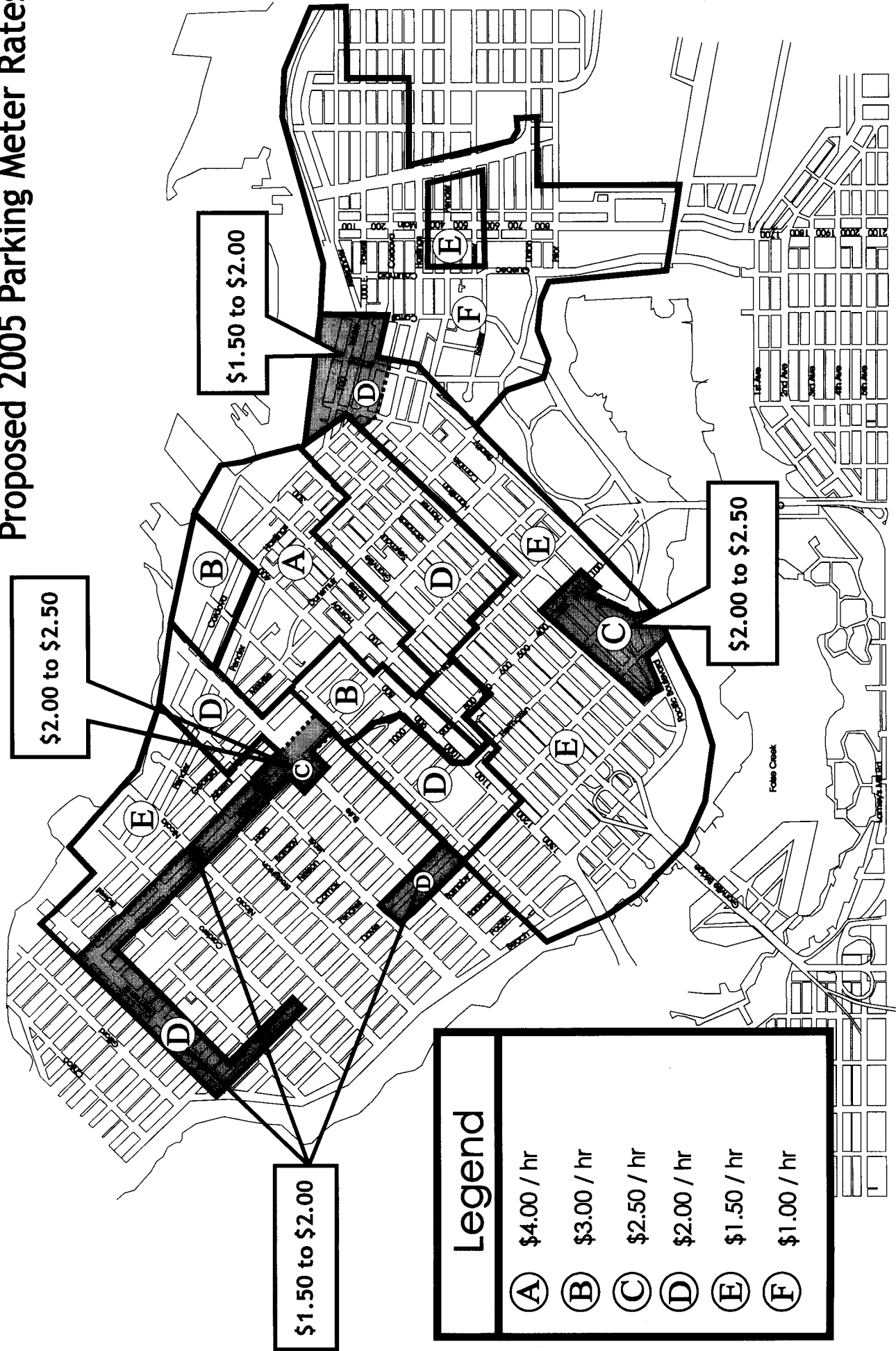


Legend	
(A)	\$4.00 / hr
(B)	\$3.00 / hr
(C)	\$2.50 / hr
(D)	\$2.00 / hr
(E)	\$1.50 / hr
(F)	\$1.00 / hr



Downtown

Proposed 2005 Parking Meter Rates



Legend

- Ⓐ \$4.00 / hr
- Ⓑ \$3.00 / hr
- Ⓒ \$2.50 / hr
- Ⓓ \$2.00 / hr
- Ⓔ \$1.50 / hr
- Ⓕ \$1.00 / hr

Broadway Corridor 2005 Proposed Parking Meter Rates



Legend	
(A)	\$4.00 / hr
(B)	\$3.00 / hr
(C)	\$2.50 / hr
(D)	\$2.00 / hr
(E)	\$1.50 / hr
(F)	\$1.00 / hr

