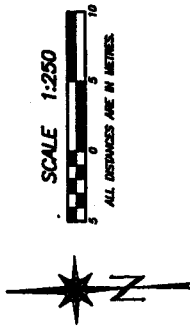


REFERENCE PLAN TO ACCOMPANY AN APPLICATION FOR THE REGISTRATION OF TITLE IN THE NAME OF THE CITY OF VANCOUVER TO THAT PORTION OF ROAD DEDICATED BY THE DEPOSIT OF PLAN 184 ADJACENT TO PARCEL A, BLOCK 24, DISTRICT LOT 196, GROUP 1, N.W.D., PLAN BCP

B.C.G.S. 92C.025



INTEGRATED SURVEY AREA No. 31 (VANCOUVER) MAD-83 (CSRS)

THIS PLAN SHOWS GROUND-LEVEL MEASURED DISTANCES FROM TO COMPANION OF I.T.A. CO-ORDINATES. MULTIPLY BY CORRECTION SCALE FACTOR 0.9999029

LEGEND

GRID BENCHMARKS ARE DERIVED FROM OBSERVATIONS BETWEEN CONTROL MONUMENTS V-3713 AND V-1586

- ⊙ - DENOTES CONTROL MONUMENT FOUND
- - DENOTES STANDARD IRON POST FOUND
- - DENOTES LEAD PLUS FOUND
- - DENOTES STANDARD IRON POST PLACED
- - DENOTES LEAD PLUS PLACED
- NR - DENOTES NO RECORD

I, MIKE E. SHAW, A BRITISH COLUMBIA LAND SURVEYOR OF PARCEL A IN DISTRICT LOT 196, GROUP 1, N.W.D., CITY OF VANCOUVER, HAVE CONDUCTED THE SURVEY REPRESENTED BY THIS PLAN AND HAVE THE SURVEY AND PLAN ARE CORRECT. THE FIELD SURVEY WAS COMPLETED ON THE 15TH DAY OF JANUARY 2001. THIS PLAN HAS BEEN PREPARED BY ME AND THE CITY OF VANCOUVER, 750 BURNBURY, ON THE 15TH DAY OF JANUARY, 2001.

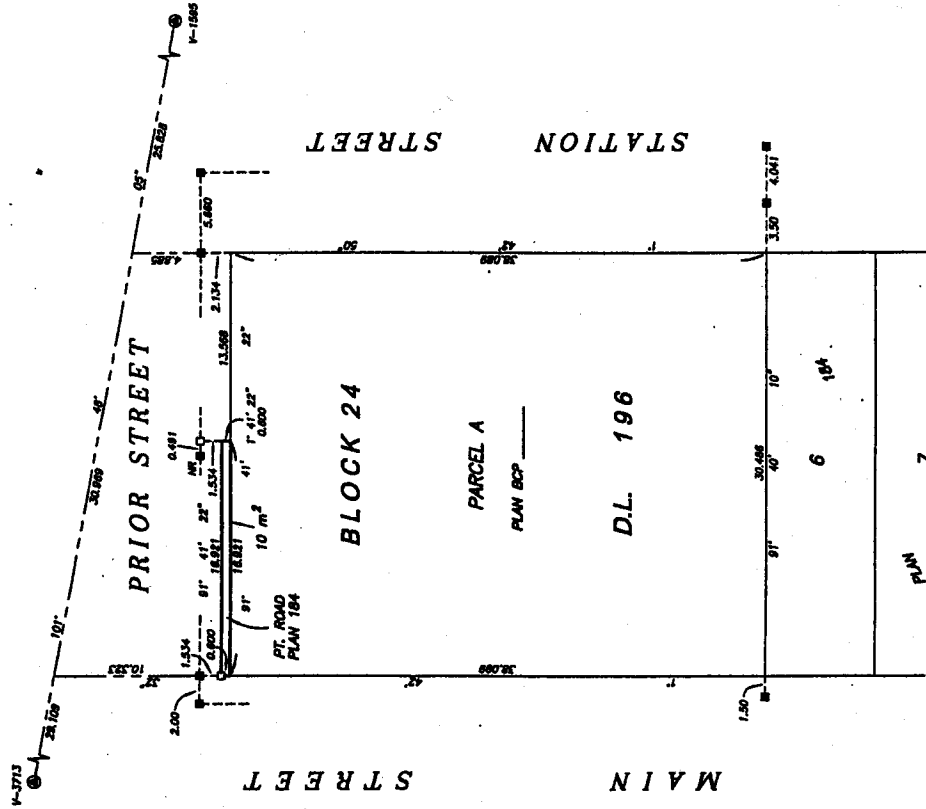
Mike E. Shaw B.C.L.S.

BEWETT & ASSOCIATES
 L.C. LAND SURVEYORS
 2100 WEST 10TH STREET,
 VANCOUVER, B.C.
 PHONE: 7, 284-0717
 DRAWING # 2008-7
 FILE # 2002-7
 DATE: 7 NOVEMBER 18, 2001

PLAN BCP

DEPOSITED IN THE LAND TITLE OFFICE
 AT NEW WESTMINSTER, B.C.
 THIS _____ DAY OF _____

DEPUTY REGISTRAR



OWNER:
 THE CITY OF VANCOUVER
 AUTHORIZED SIGNATORY
 AUTHORIZED SIGNATORY
 WITNESS AS TO RIGHT SIGNATURES
 OCCUPATION OF WITNESS
 ADDRESS OF WITNESS

THIS PLAN LIES WITHIN THE GREATER VANCOUVER REGIONAL DISTRICT

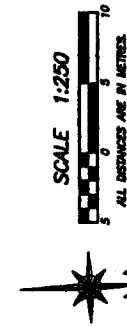
EXPLANATORY PLAN OF VOLUMETRIC EASEMENT OVER A PORTION OF ROAD INCLUDED IN REFERENCE PLAN BCP DEDICATED BY THE DEPOSIT OF PLAN 184 ADJACENT TO PARCEL A, BLOCK 24, DISTRICT LOT 196, GROUP 1, N.W.D., PLAN BCP

PLAN BCP

DEPOSITED IN THE LAND TITLE OFFICE
AT NEW WESTMINSTER, B.C.
THIS _____ DAY OF _____

B.C.G.S. 926.025

PRIOR STREET



INTEGRATED SURVEY AREA No. 31
(VANCOUVER) NAD-83 (CSRS)

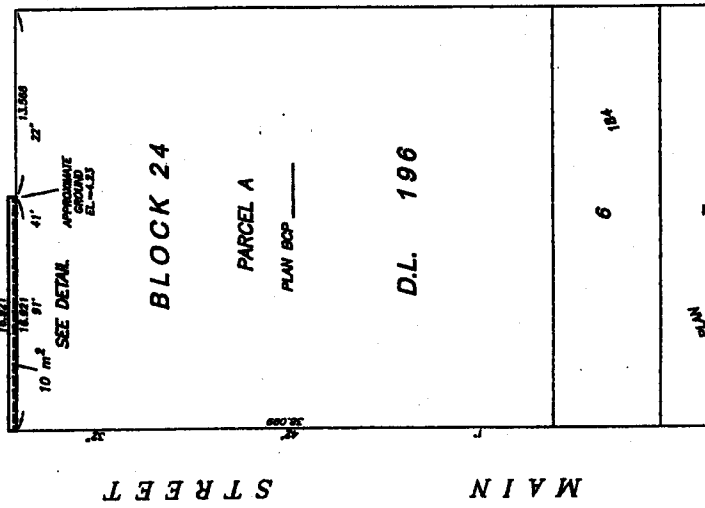
THIS PLAN SHOWS ORIGINAL MEASURED DIMENSIONS
PRIOR TO CORRECTION OF SLIP CO-CORRECTION
MULTIPLY BY CORRECTION SCALE FACTOR 0.999999

LEGEND

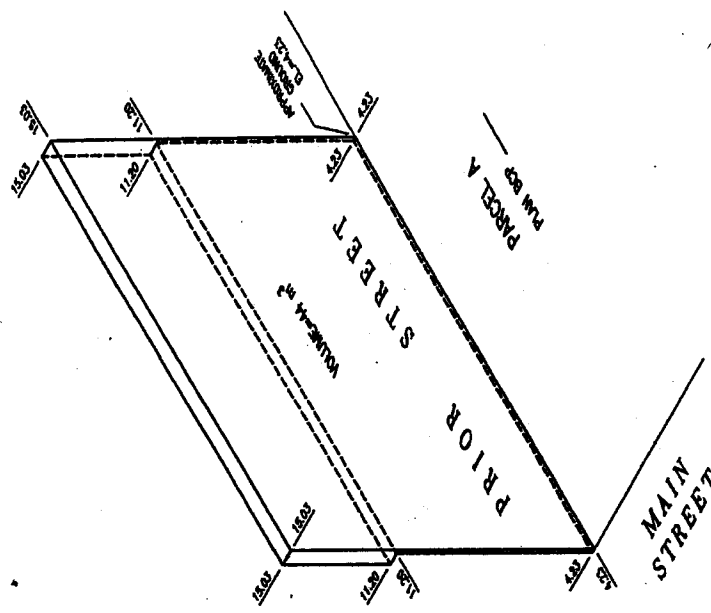
ELEVATIONS ARE TO GEODETIC DATUM DERIVED FROM
THE CHECKLIST FILE UNDER THE JURISDICTION OF
CITY OF VANCOUVER JANUARY 14, 1988 LOCATED AT
1150 WEST BROAD STREET AND BRITISH STREET
ELEVATION=41.07 METRES

GRID BEARINGS ARE DERIVED
FROM PLAN BCP

m² - DENOTES SQUARE METRES
m³ - DENOTES CUBIC METRES



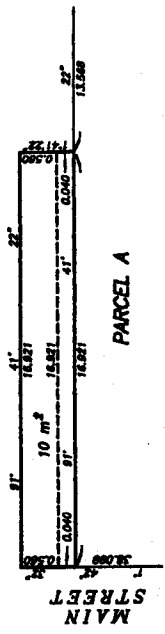
PLAN VIEW



ISOMETRIC VIEW



PRIOR STREET



PARCEL A

DETAIL

NOT TO SCALE

THIS PLAN WAS COMPLETED AND CHECKED WITH
THE CHECKLIST FILE UNDER THE JURISDICTION OF
CITY OF VANCOUVER JANUARY 14, 1988 LOCATED AT
1150 WEST BROAD STREET AND BRITISH STREET
ELEVATION=41.07 METRES

Mike E. Shaw
MIKE E. SHAW P.C.L.E.

BOWMETT & ASSOCIATES
B.C. LAND SURVEYORS
2501-2504 FLEWING STREET,
VANCOUVER, B.C. V6L 1Y7
PHONE: 733-0717

THIS PLAN LIES WITHIN THE
GREATER VANCOUVER REGIONAL DISTRICT

DRAWING / 2004-9
FILE / 2004-9
DATE / DECEMBER 2, 2004