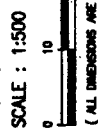


REFERENCE PLAN TO ACCOMPANY A RESOLUTION OF THE COUNCIL OF THE CITY OF VANCOUVER STOPPING UP PORTION OF LANE DEDICATED BY THE DEPOSIT OF PLAN 5832 ADJACENT TO LOT D, EXCEPT PART IN EXPLANATORY PLAN 18244, BLOCK 17, DISTRICT LOT 302, PLAN 19777 GROUP 1, NEW WESTMINSTER DISTRICT B.C.G.S. 926.025



INTEGRATED SURVEY AREA NO.31 (VANCOUVER)

THIS PLAN SHOWS GROUND - LEVEL MEASURED DISTANCES. PRIOR TO COMPUTATION OF ULTIM. CO-ORDINATES, MULTIPLY BY CORRECTION FACTOR 0.999017



LEGEND

CHISEL BEARINGS ARE CHISEL (MARKS) AND ARE DERIVED FROM OBSERVATIONS BETWEEN CONTROL MONUMENTS V-3037 & V-3068. INTERFERED SURVEY AREA (M.S.)

SYMBOLS FOUND	DESCRIPTION
⊙	CONTROL MONUMENT
○	STANDARD IRON POST
□	LEAD PLUG

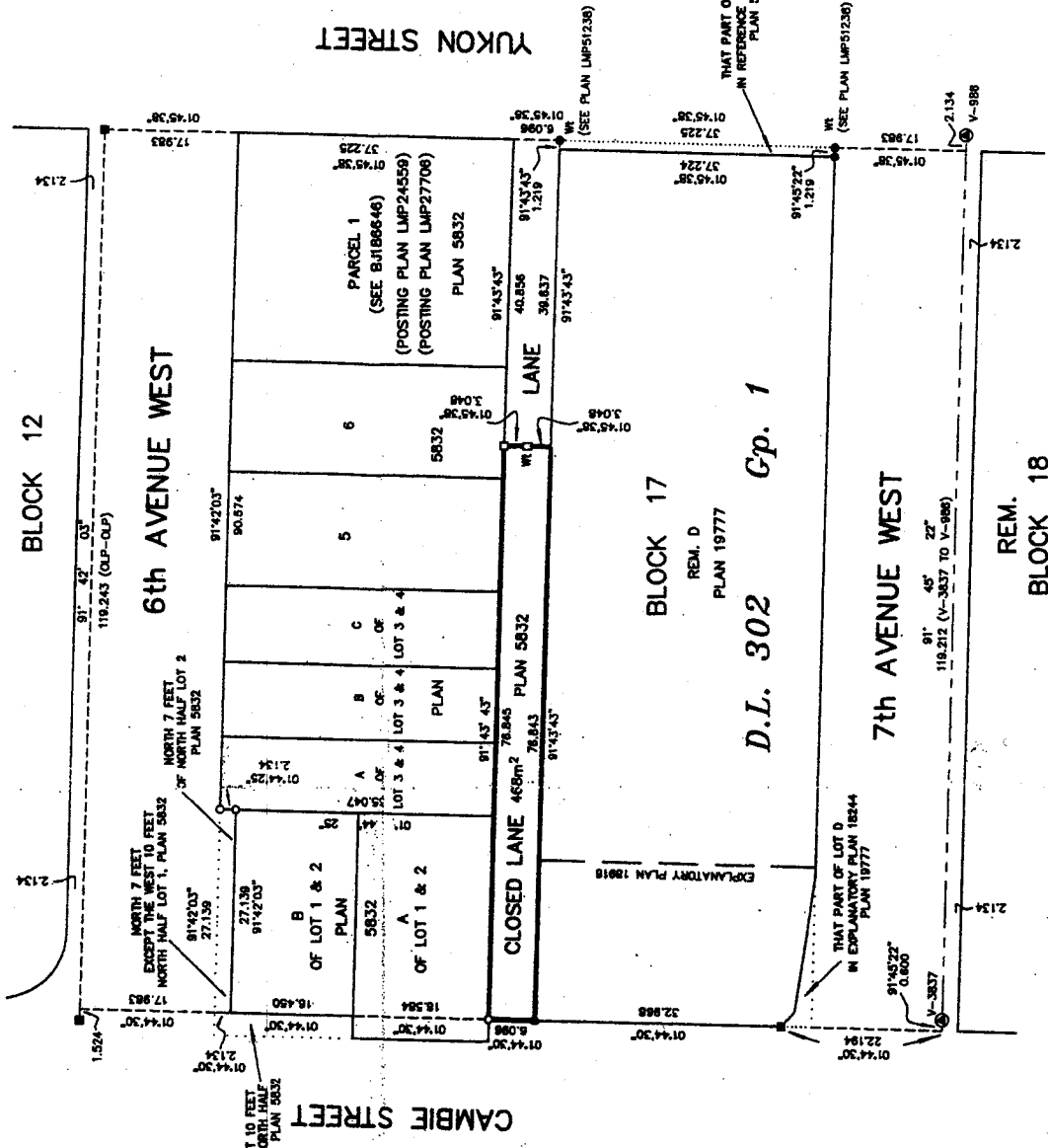
I, J. L. BROWN, A BRITISH COLUMBIA LAND SURVEYOR OF 25 YEARS STANDING, HEREBY CERTIFY THAT I WAS PRESENT AT AND PERSONALLY SUPERINTENDED THE SURVEY REPRESENTED BY THIS PLAN AND THAT THE SURVEY AND PLAN ARE CORRECT. THE FIELD SURVEY WAS COMPLETED ON THE 10th DAY OF SEPTEMBER, 2003. THIS PLAN WAS CHECKED AND THE CHECKSHEET FILED UNDER 1 9887, ON THE 10th DAY OF OCTOBER, 2003.

J. L. Brown B.C.L.S.

PLAN BCP

DEPOSITED IN THE LAND TITLE OFFICE AT NEW WESTMINSTER, B.C. THIS _____ DAY OF _____, 2003.

DEPUTY REGISTRAR



MACLENNAN ASSOCIATES
PROFESSIONAL LAND SURVEYORS
1310-10th Avenue
Vancouver, B.C. V6Z 1Y6
PHONE: (604) 684-0391
FAX: 212 0670-03

THIS PLAN LIES WITHIN THE GREATER VANCOUVER REGIONAL DISTRICT - CITY OF VANCOUVER