

CAMBIE STREET

THAT PART OF LOT D IN
EXP. PLAN 18244, PLAN 19777

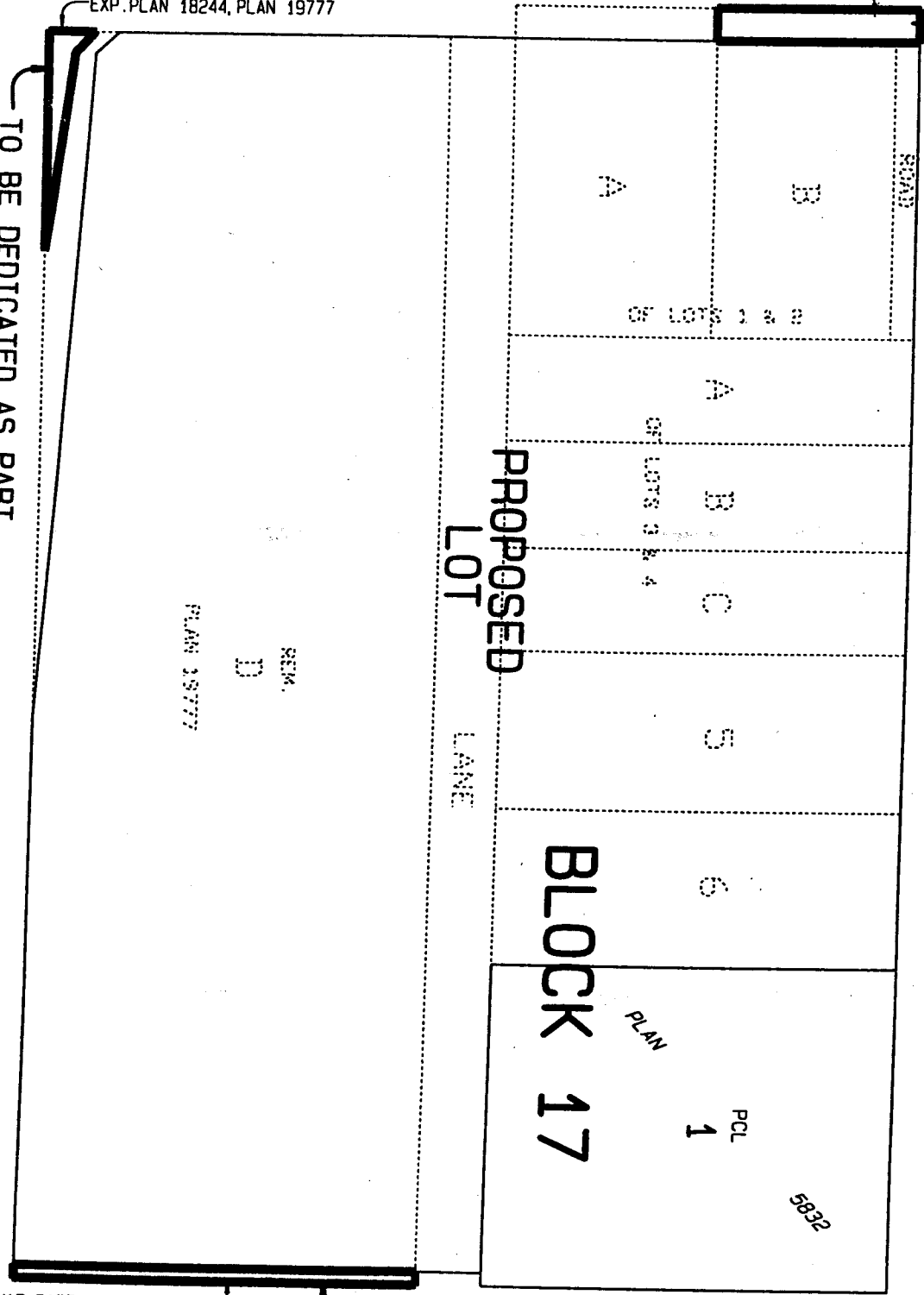
THE W. 10 FT OF N1/2 OF LOT 1, PLAN 5832

TO BE DEDICATED AS PART
OF SUBDIVISION PLAN

6TH AVENUE

TO BE DEDICATED AS PART
OF SUBDIVISION PLAN

7TH AVENUE



THAT PART OF LOT 9 IN
REFERENCE PLAN 9380, PLAN 5832

TO BE DEDICATED AS PART
OF SUBDIVISION PLAN

YUKON STREET

APPENDIX C