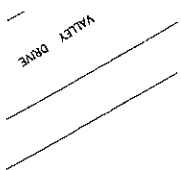
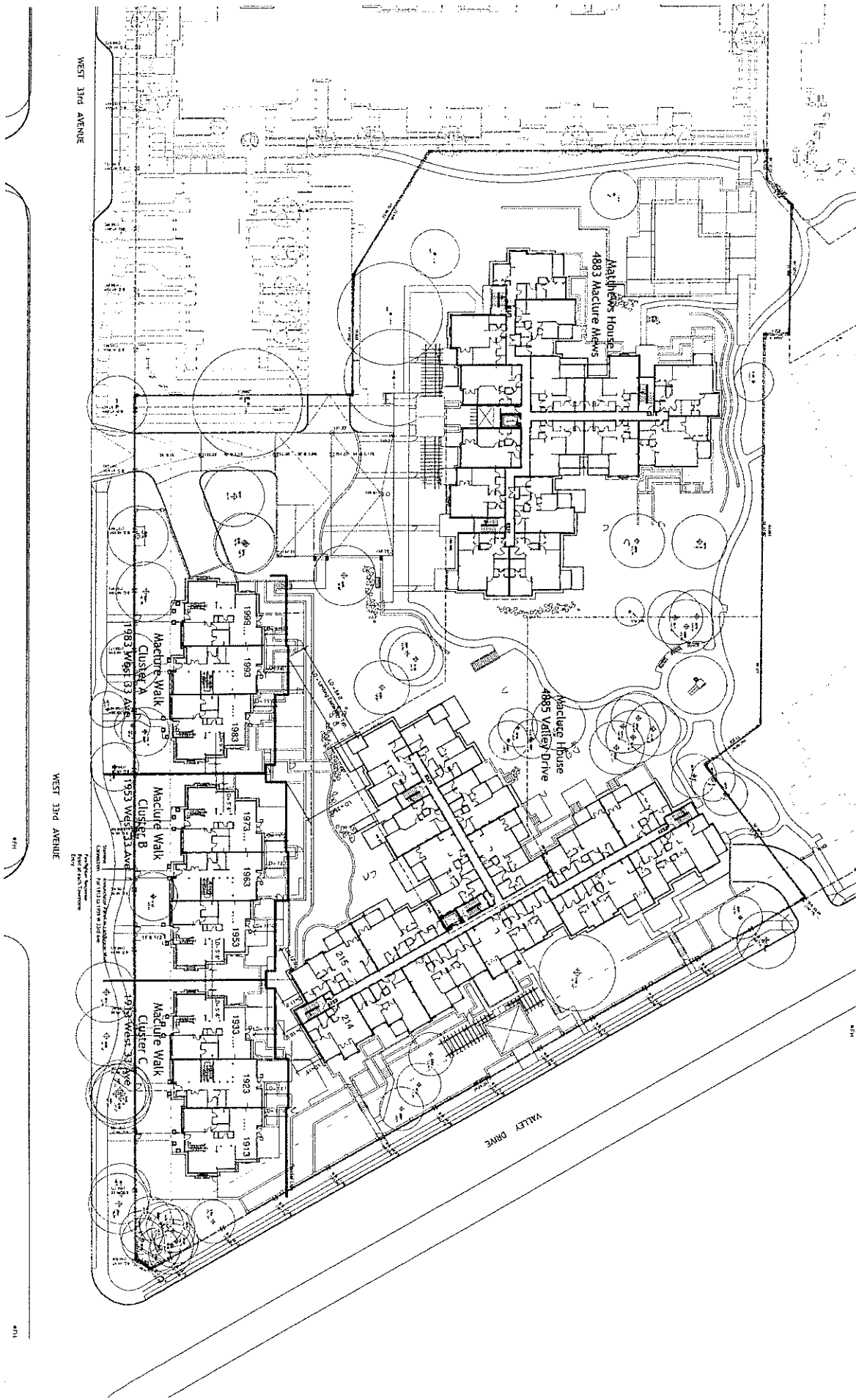


----- Zoning Boundary



Site : 4899 Valley Drive DE 407580



GENERAL NOTES:

1. All work shall be in accordance with the City of San Diego Building Code and all applicable codes and regulations.
2. The applicant shall be responsible for obtaining all necessary permits from the City of San Diego.
3. The applicant shall be responsible for obtaining all necessary utility easements and rights-of-way from the appropriate utility companies.
4. The applicant shall be responsible for obtaining all necessary approvals from the City of San Diego Planning and Development Department.
5. The applicant shall be responsible for obtaining all necessary approvals from the City of San Diego Public Works Department.
6. The applicant shall be responsible for obtaining all necessary approvals from the City of San Diego Department of Public Works.
7. The applicant shall be responsible for obtaining all necessary approvals from the City of San Diego Department of Public Works.
8. The applicant shall be responsible for obtaining all necessary approvals from the City of San Diego Department of Public Works.
9. The applicant shall be responsible for obtaining all necessary approvals from the City of San Diego Department of Public Works.
10. The applicant shall be responsible for obtaining all necessary approvals from the City of San Diego Department of Public Works.

DATE: 02/07/07
SCALE: AS SHOWN
PROJECT: CALIFORNIA PARK PHASE 4 & 5
CLIENT: CALIFORNIA PARK PHASE 4 & 5
DESIGNER: POLYGON



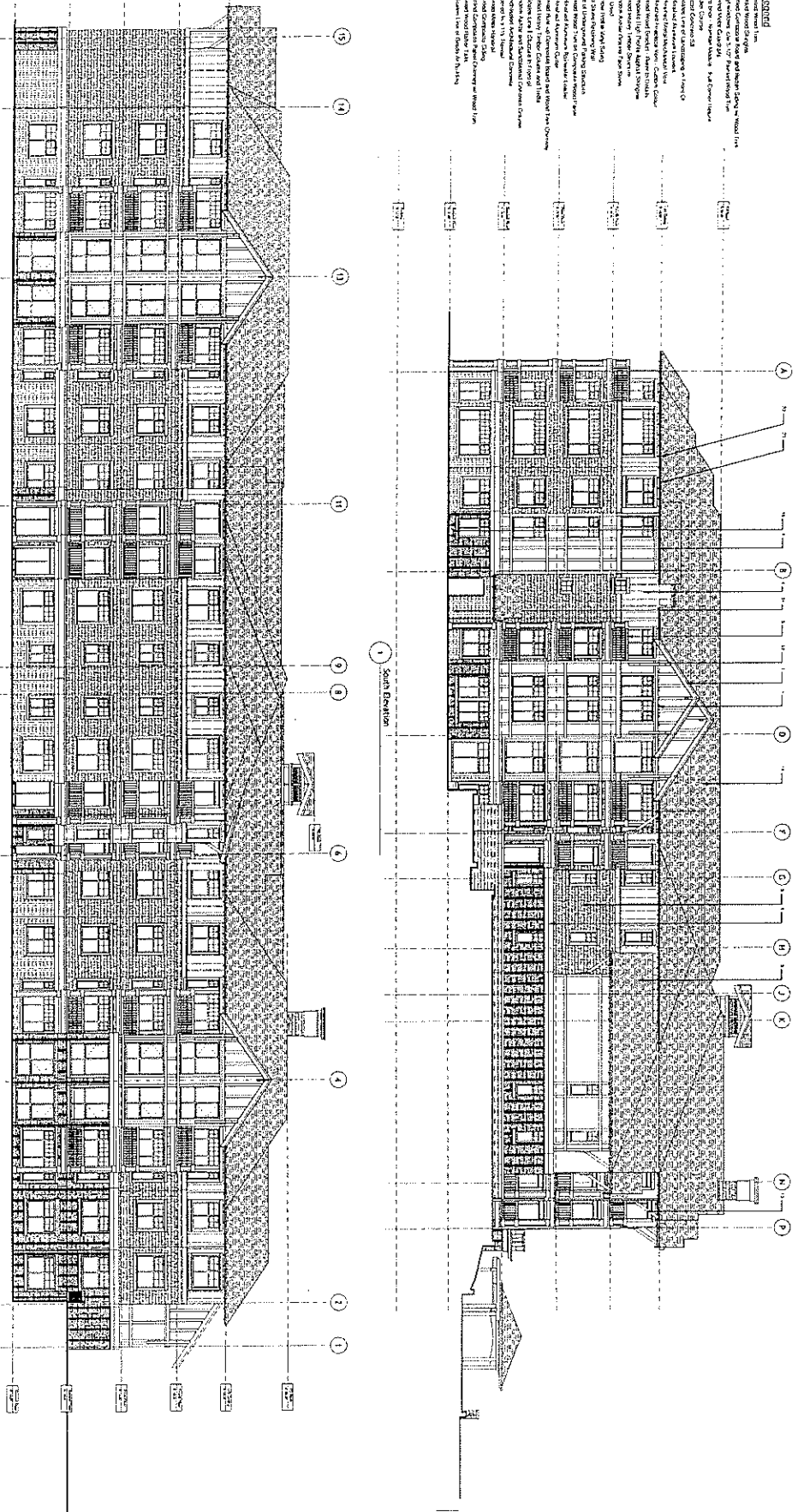
CH
 GARDNER & BARBER ARCHITECTS INC.
 1700 VAN NESS BLVD., SUITE 200
 SAN FRANCISCO, CA 94109
 TEL: 415.774.2200
 FAX: 415.774.2201

Project: California Park
Phase: 4 & 5
Site Plan: F300-02
Scale: AS SHOWN
Date: 02/07/07
Author: [Name]
Check: [Name]

DP-A-1.14

Material Legend

1. Asph/Flt Shingles
2. Asph/Flt Shingles
3. Asph/Flt Shingles
4. Asph/Flt Shingles
5. Asph/Flt Shingles
6. Asph/Flt Shingles
7. Asph/Flt Shingles
8. Asph/Flt Shingles
9. Asph/Flt Shingles
10. Asph/Flt Shingles
11. Asph/Flt Shingles
12. Asph/Flt Shingles
13. Asph/Flt Shingles
14. Asph/Flt Shingles
15. Asph/Flt Shingles
16. Asph/Flt Shingles
17. Asph/Flt Shingles
18. Asph/Flt Shingles
19. Asph/Flt Shingles
20. Asph/Flt Shingles
21. Asph/Flt Shingles
22. Asph/Flt Shingles
23. Asph/Flt Shingles
24. Asph/Flt Shingles
25. Asph/Flt Shingles
26. Asph/Flt Shingles
27. Asph/Flt Shingles
28. Asph/Flt Shingles
29. Asph/Flt Shingles
30. Asph/Flt Shingles
31. Asph/Flt Shingles
32. Asph/Flt Shingles
33. Asph/Flt Shingles
34. Asph/Flt Shingles

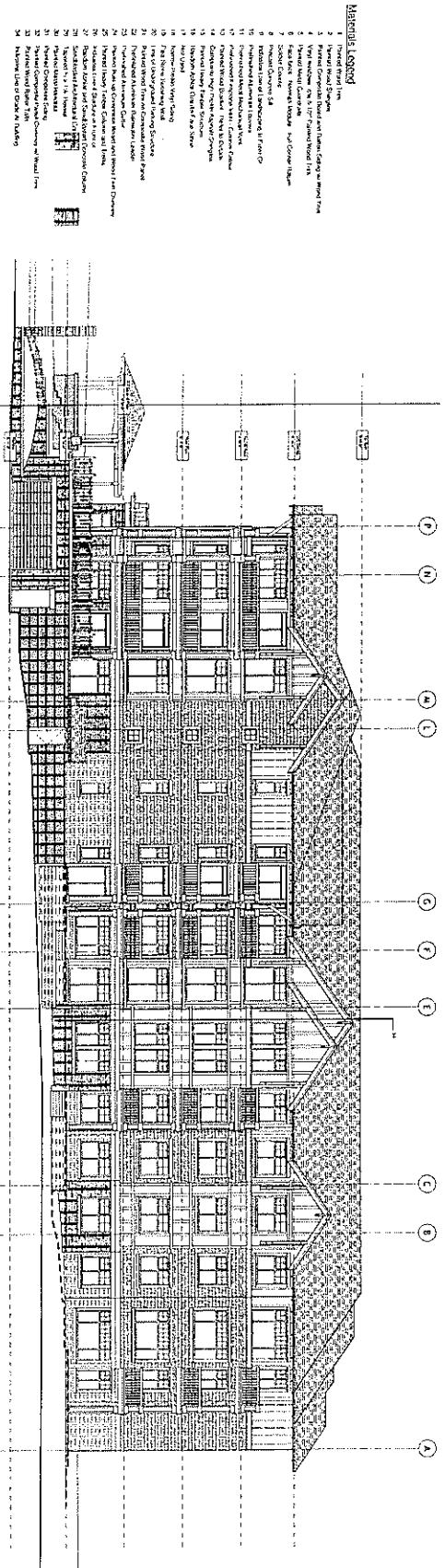


Window Schedule

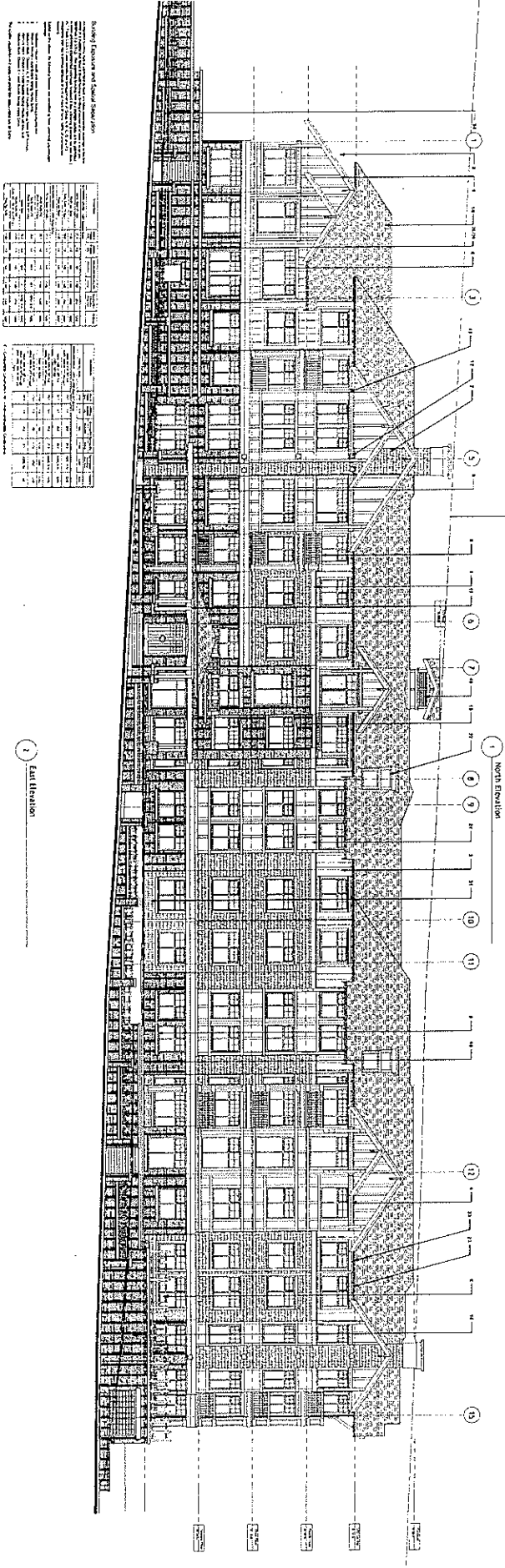
Window No.	Description	Material	Finish	Notes
1	6'0\"	Asph/Flt Shingles	Asph/Flt Shingles	
2	6'0\"	Asph/Flt Shingles	Asph/Flt Shingles	
3	6'0\"	Asph/Flt Shingles	Asph/Flt Shingles	
4	6'0\"	Asph/Flt Shingles	Asph/Flt Shingles	
5	6'0\"	Asph/Flt Shingles	Asph/Flt Shingles	
6	6'0\"	Asph/Flt Shingles	Asph/Flt Shingles	
7	6'0\"	Asph/Flt Shingles	Asph/Flt Shingles	
8	6'0\"	Asph/Flt Shingles	Asph/Flt Shingles	
9	6'0\"	Asph/Flt Shingles	Asph/Flt Shingles	
10	6'0\"	Asph/Flt Shingles	Asph/Flt Shingles	
11	6'0\"	Asph/Flt Shingles	Asph/Flt Shingles	
12	6'0\"	Asph/Flt Shingles	Asph/Flt Shingles	
13	6'0\"	Asph/Flt Shingles	Asph/Flt Shingles	
14	6'0\"	Asph/Flt Shingles	Asph/Flt Shingles	
15	6'0\"	Asph/Flt Shingles	Asph/Flt Shingles	

West Elevation

South Elevation



- MATERIALS LEGEND**
1. Standard Finish
 2. Painted Composite Board and Batten Siding as Shown
 3. Painted Composite Board and Batten Siding as Shown
 4. Painted Composite Board and Batten Siding as Shown
 5. Painted Composite Board and Batten Siding as Shown
 6. Painted Composite Board and Batten Siding as Shown
 7. Painted Composite Board and Batten Siding as Shown
 8. Painted Composite Board and Batten Siding as Shown
 9. Painted Composite Board and Batten Siding as Shown
 10. Painted Composite Board and Batten Siding as Shown
 11. Painted Composite Board and Batten Siding as Shown
 12. Painted Composite Board and Batten Siding as Shown
 13. Painted Composite Board and Batten Siding as Shown
 14. Painted Composite Board and Batten Siding as Shown
 15. Painted Composite Board and Batten Siding as Shown
 16. Painted Composite Board and Batten Siding as Shown
 17. Painted Composite Board and Batten Siding as Shown
 18. Painted Composite Board and Batten Siding as Shown
 19. Painted Composite Board and Batten Siding as Shown
 20. Painted Composite Board and Batten Siding as Shown
 21. Painted Composite Board and Batten Siding as Shown
 22. Painted Composite Board and Batten Siding as Shown
 23. Painted Composite Board and Batten Siding as Shown
 24. Painted Composite Board and Batten Siding as Shown
 25. Painted Composite Board and Batten Siding as Shown
 26. Painted Composite Board and Batten Siding as Shown
 27. Painted Composite Board and Batten Siding as Shown
 28. Painted Composite Board and Batten Siding as Shown
 29. Painted Composite Board and Batten Siding as Shown
 30. Painted Composite Board and Batten Siding as Shown
 31. Painted Composite Board and Batten Siding as Shown
 32. Painted Composite Board and Batten Siding as Shown



- MATERIALS LEGEND**
1. Standard Finish
 2. Painted Composite Board and Batten Siding as Shown
 3. Painted Composite Board and Batten Siding as Shown
 4. Painted Composite Board and Batten Siding as Shown
 5. Painted Composite Board and Batten Siding as Shown
 6. Painted Composite Board and Batten Siding as Shown
 7. Painted Composite Board and Batten Siding as Shown
 8. Painted Composite Board and Batten Siding as Shown
 9. Painted Composite Board and Batten Siding as Shown
 10. Painted Composite Board and Batten Siding as Shown
 11. Painted Composite Board and Batten Siding as Shown
 12. Painted Composite Board and Batten Siding as Shown
 13. Painted Composite Board and Batten Siding as Shown
 14. Painted Composite Board and Batten Siding as Shown
 15. Painted Composite Board and Batten Siding as Shown
 16. Painted Composite Board and Batten Siding as Shown
 17. Painted Composite Board and Batten Siding as Shown
 18. Painted Composite Board and Batten Siding as Shown
 19. Painted Composite Board and Batten Siding as Shown
 20. Painted Composite Board and Batten Siding as Shown
 21. Painted Composite Board and Batten Siding as Shown
 22. Painted Composite Board and Batten Siding as Shown
 23. Painted Composite Board and Batten Siding as Shown
 24. Painted Composite Board and Batten Siding as Shown
 25. Painted Composite Board and Batten Siding as Shown
 26. Painted Composite Board and Batten Siding as Shown
 27. Painted Composite Board and Batten Siding as Shown
 28. Painted Composite Board and Batten Siding as Shown
 29. Painted Composite Board and Batten Siding as Shown
 30. Painted Composite Board and Batten Siding as Shown
 31. Painted Composite Board and Batten Siding as Shown
 32. Painted Composite Board and Batten Siding as Shown

1 East Elevation

POLYGON

GH

Quincy • Habitat Architecture
1401 N. 1st Street, Suite 100
Phoenix, AZ 85004 • 602.498.1111

ORCHARD PARK
PHASE 4 & 5
3001 W. WILSON DRIVE
PHOENIX, AZ 85018

1401 N. 1st Street
Phoenix, AZ 85004
3001 W. Wilson Drive
Phoenix, AZ 85018

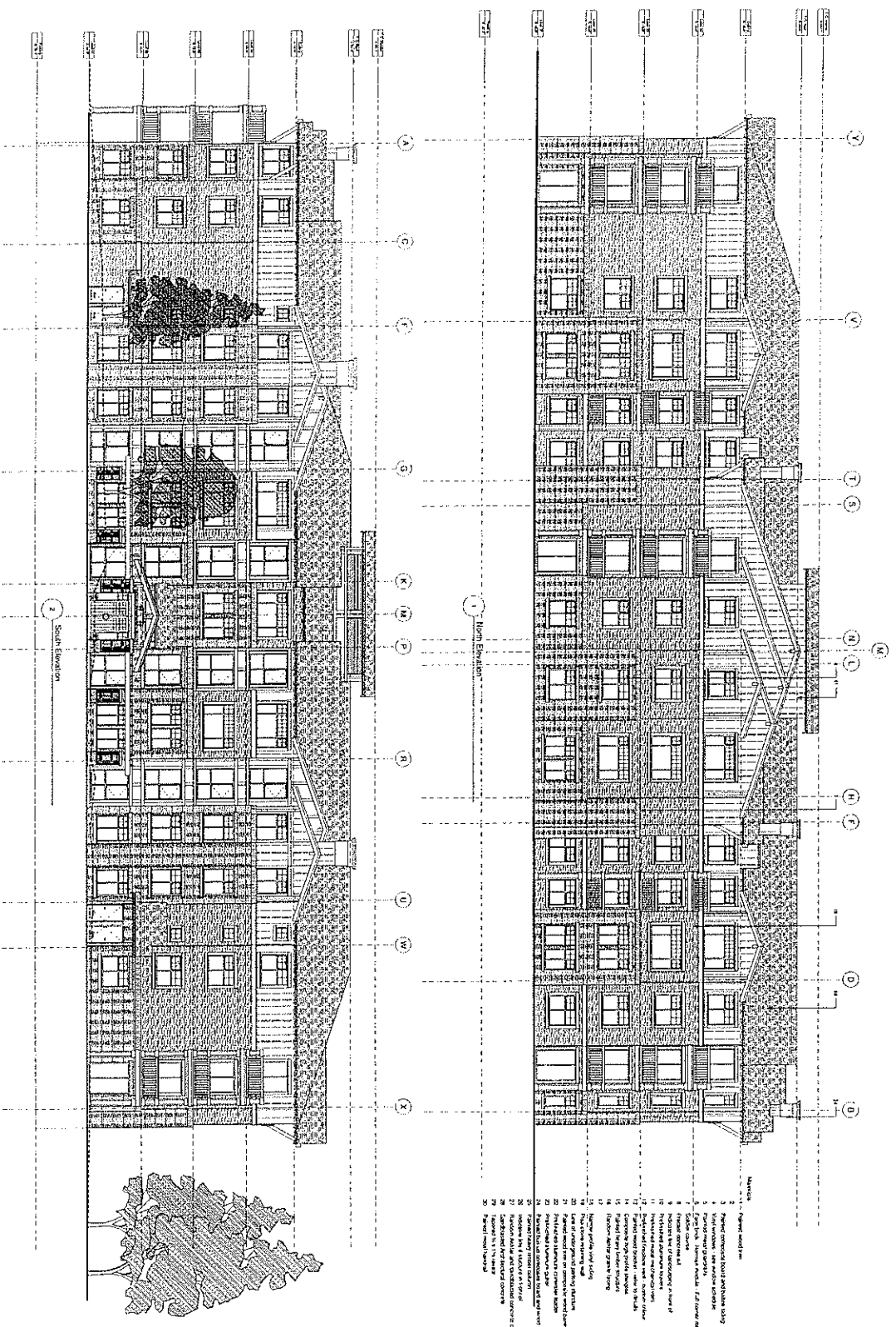
Scale: 1/8" = 1'-0"

DATE: 02/07

PROJECT: Orchard Park

DP-A-4.12

Development Permit Issue

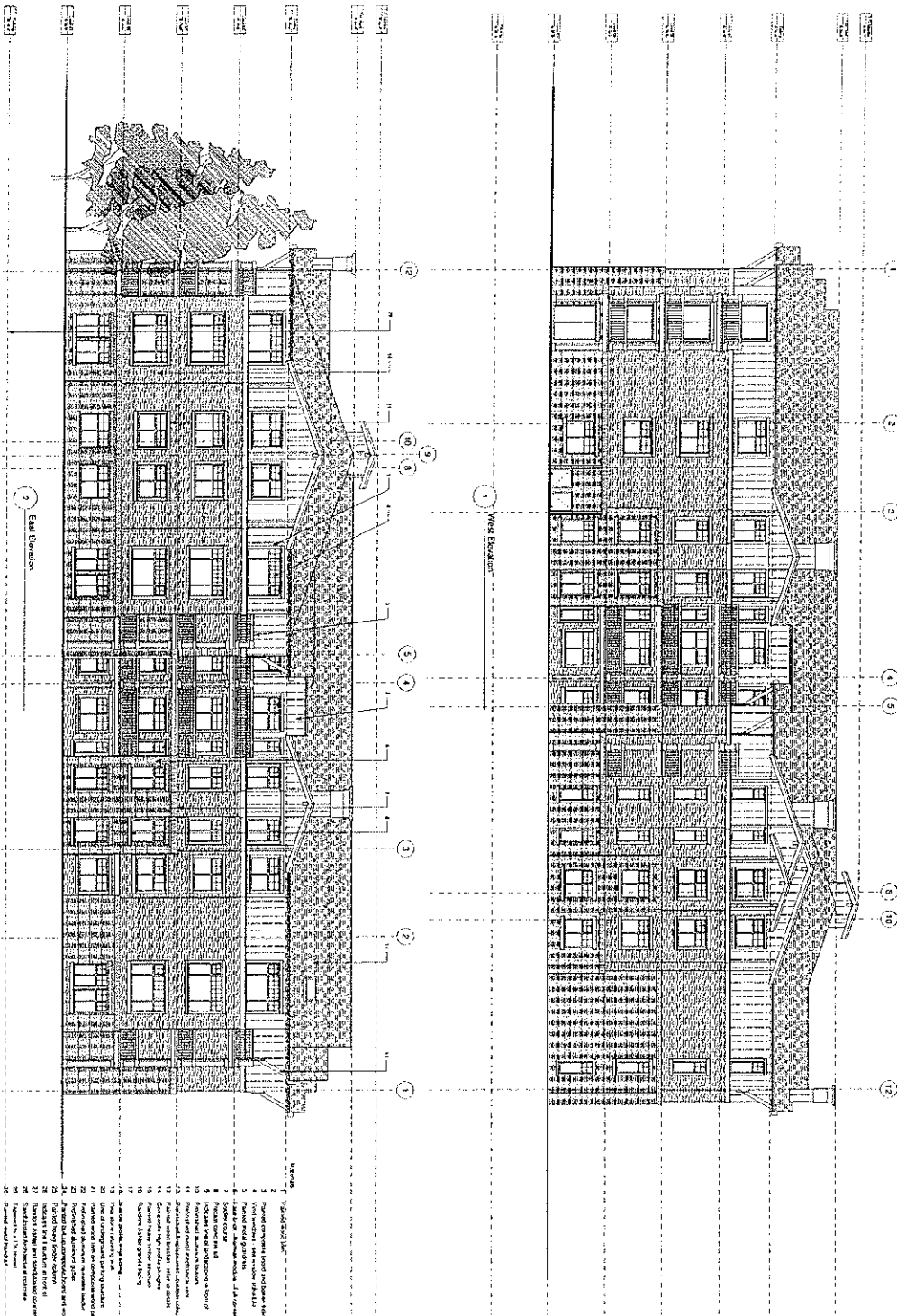


- Materials
1. Painted wood
 2. Painted exterior brick with white mortar
 3. Painted wood
 4. Painted wood
 5. Painted wood
 6. Painted wood
 7. Painted wood
 8. Painted wood
 9. Painted wood
 10. Painted wood
 11. Painted wood
 12. Painted wood
 13. Painted wood
 14. Painted wood
 15. Painted wood
 16. Painted wood
 17. Painted wood
 18. Painted wood
 19. Painted wood
 20. Painted wood
 21. Painted wood
 22. Painted wood
 23. Painted wood
 24. Painted wood
 25. Painted wood
 26. Painted wood
 27. Painted wood
 28. Painted wood
 29. Painted wood
 30. Painted wood

Item	Material	Quantity	Unit
1	Painted wood	100	Sq. Ft.
2	Painted exterior brick with white mortar	500	Sq. Ft.
3	Painted wood	100	Sq. Ft.
4	Painted wood	100	Sq. Ft.
5	Painted wood	100	Sq. Ft.
6	Painted wood	100	Sq. Ft.
7	Painted wood	100	Sq. Ft.
8	Painted wood	100	Sq. Ft.
9	Painted wood	100	Sq. Ft.
10	Painted wood	100	Sq. Ft.
11	Painted wood	100	Sq. Ft.
12	Painted wood	100	Sq. Ft.
13	Painted wood	100	Sq. Ft.
14	Painted wood	100	Sq. Ft.
15	Painted wood	100	Sq. Ft.
16	Painted wood	100	Sq. Ft.
17	Painted wood	100	Sq. Ft.
18	Painted wood	100	Sq. Ft.
19	Painted wood	100	Sq. Ft.
20	Painted wood	100	Sq. Ft.
21	Painted wood	100	Sq. Ft.
22	Painted wood	100	Sq. Ft.
23	Painted wood	100	Sq. Ft.
24	Painted wood	100	Sq. Ft.
25	Painted wood	100	Sq. Ft.
26	Painted wood	100	Sq. Ft.
27	Painted wood	100	Sq. Ft.
28	Painted wood	100	Sq. Ft.
29	Painted wood	100	Sq. Ft.
30	Painted wood	100	Sq. Ft.

Scale: 1/4" = 1'-0"

North Arrow



- Notes:
1. General contractor to provide and install all exterior finish materials.
 2. Provide and install all exterior finish materials.
 3. Provide and install all exterior finish materials.
 4. Provide and install all exterior finish materials.
 5. Provide and install all exterior finish materials.
 6. Provide and install all exterior finish materials.
 7. Provide and install all exterior finish materials.
 8. Provide and install all exterior finish materials.
 9. Provide and install all exterior finish materials.
 10. Provide and install all exterior finish materials.
 11. Provide and install all exterior finish materials.
 12. Provide and install all exterior finish materials.
 13. Provide and install all exterior finish materials.
 14. Provide and install all exterior finish materials.
 15. Provide and install all exterior finish materials.
 16. Provide and install all exterior finish materials.
 17. Provide and install all exterior finish materials.
 18. Provide and install all exterior finish materials.
 19. Provide and install all exterior finish materials.
 20. Provide and install all exterior finish materials.
 21. Provide and install all exterior finish materials.
 22. Provide and install all exterior finish materials.
 23. Provide and install all exterior finish materials.
 24. Provide and install all exterior finish materials.
 25. Provide and install all exterior finish materials.
 26. Provide and install all exterior finish materials.
 27. Provide and install all exterior finish materials.
 28. Provide and install all exterior finish materials.
 29. Provide and install all exterior finish materials.
 30. Provide and install all exterior finish materials.

Item	Quantity	Unit	Material
1	100	Sq. Ft.	Brick
2	50	Sq. Ft.	Concrete
3	20	Sq. Ft.	Stucco
4	10	Sq. Ft.	Asph/Flt.
5	5	Sq. Ft.	Insulation
6	2	Sq. Ft.	Roofing
7	1	Sq. Ft.	Foundation
8	1	Sq. Ft.	Foundation
9	1	Sq. Ft.	Foundation
10	1	Sq. Ft.	Foundation
11	1	Sq. Ft.	Foundation
12	1	Sq. Ft.	Foundation
13	1	Sq. Ft.	Foundation
14	1	Sq. Ft.	Foundation
15	1	Sq. Ft.	Foundation
16	1	Sq. Ft.	Foundation
17	1	Sq. Ft.	Foundation
18	1	Sq. Ft.	Foundation
19	1	Sq. Ft.	Foundation
20	1	Sq. Ft.	Foundation
21	1	Sq. Ft.	Foundation
22	1	Sq. Ft.	Foundation
23	1	Sq. Ft.	Foundation
24	1	Sq. Ft.	Foundation
25	1	Sq. Ft.	Foundation
26	1	Sq. Ft.	Foundation
27	1	Sq. Ft.	Foundation
28	1	Sq. Ft.	Foundation
29	1	Sq. Ft.	Foundation
30	1	Sq. Ft.	Foundation

Scale: 1/4" = 1'-0"

Notes:

1. General contractor to provide and install all exterior finish materials.
2. Provide and install all exterior finish materials.
3. Provide and install all exterior finish materials.
4. Provide and install all exterior finish materials.
5. Provide and install all exterior finish materials.
6. Provide and install all exterior finish materials.
7. Provide and install all exterior finish materials.
8. Provide and install all exterior finish materials.
9. Provide and install all exterior finish materials.
10. Provide and install all exterior finish materials.
11. Provide and install all exterior finish materials.
12. Provide and install all exterior finish materials.
13. Provide and install all exterior finish materials.
14. Provide and install all exterior finish materials.
15. Provide and install all exterior finish materials.
16. Provide and install all exterior finish materials.
17. Provide and install all exterior finish materials.
18. Provide and install all exterior finish materials.
19. Provide and install all exterior finish materials.
20. Provide and install all exterior finish materials.
21. Provide and install all exterior finish materials.
22. Provide and install all exterior finish materials.
23. Provide and install all exterior finish materials.
24. Provide and install all exterior finish materials.
25. Provide and install all exterior finish materials.
26. Provide and install all exterior finish materials.
27. Provide and install all exterior finish materials.
28. Provide and install all exterior finish materials.
29. Provide and install all exterior finish materials.
30. Provide and install all exterior finish materials.

