

REFERENCE PLAN TO ACCOMPANY AN APPLICATION FOR THE REGISTRATION OF TITLE IN THE NAME OF THE CITY OF VANCOUVER TO THOSE PORTIONS OF ROAD DEDICATED BY THE DEPOSIT OF PLAN 92 ADJACENT TO PARCEL A BLOCK 67 DISTRICT LOT 185 GROUP 1 NEW WESTMINSTER DISTRICT PLAN BCP4527

APPENDIX A PLAN BCP

REF. No. _____

Deposited in the Land Title Office at New Westminster, B.C.

This day of _____ 20____

Deputy Registrar

This plan lies within the Greater Vancouver Regional District

B.C.G.S. 92G.025

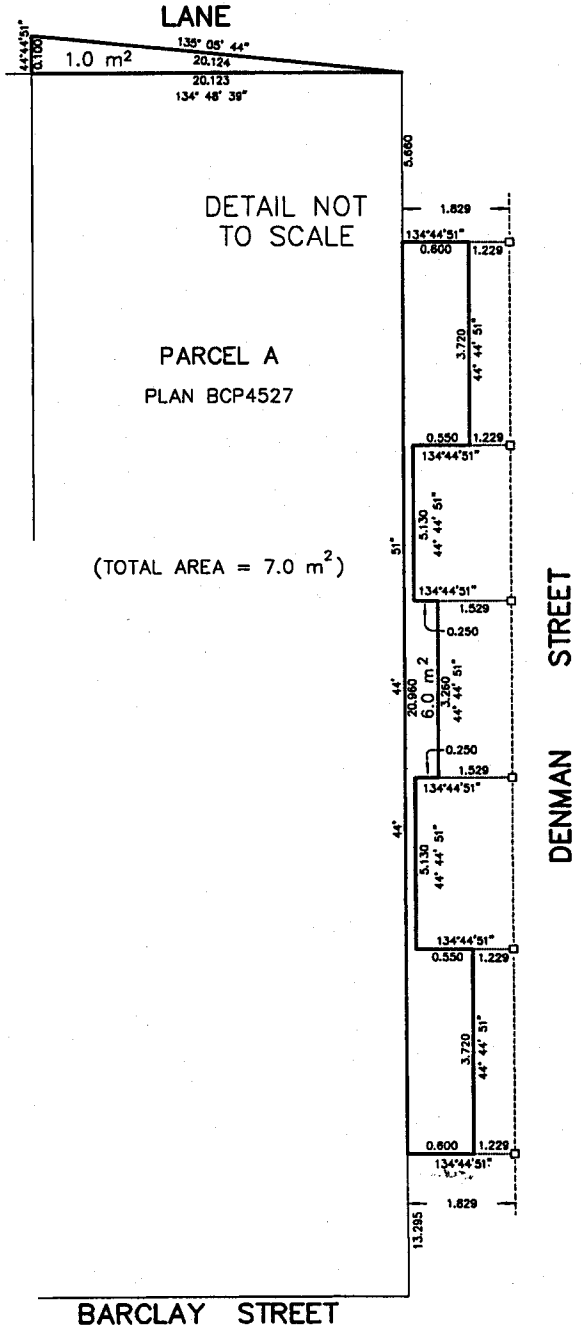
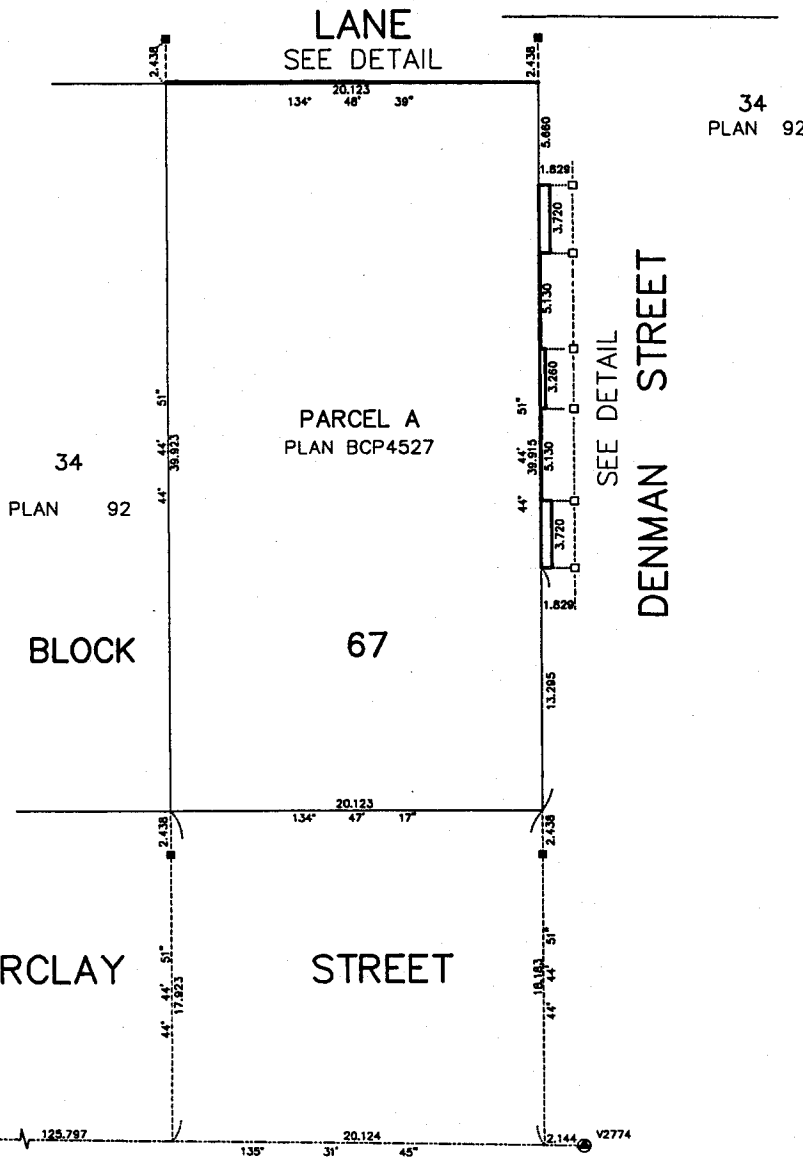
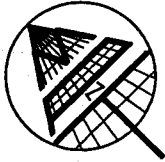
OWNER: CITY OF VANCOUVER

Authorized Signatory

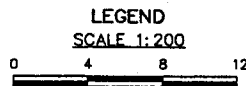
Witness as to above signatory

Occupation of Witness

Address of Witness



MATSON PECK & TOPLISS
 SURVEYORS & ENGINEERS
 #210 - 8171 Cook Road
 Richmond, B.C.
 V6Y 3T8
 Ph: 604-270-9331
 Fax: 604-270-4137
 CADFILE: 13805-REFERENCE-2.FLX



All distances are in metres
 Grid bearings are derived from observations between control monuments V2774 and V3524, NAD83 (CSRS) Integrated Survey Area No. 31, City of Vancouver

- ⊙ Indicates Control Monument Found
- Indicates Lead Plug Found
- Indicates Lead Plug Placed

This plan shows ground level measured distances. Prior to computation of U.T.M. co-ordinates, multiply by mean combined factor 0.9998016.

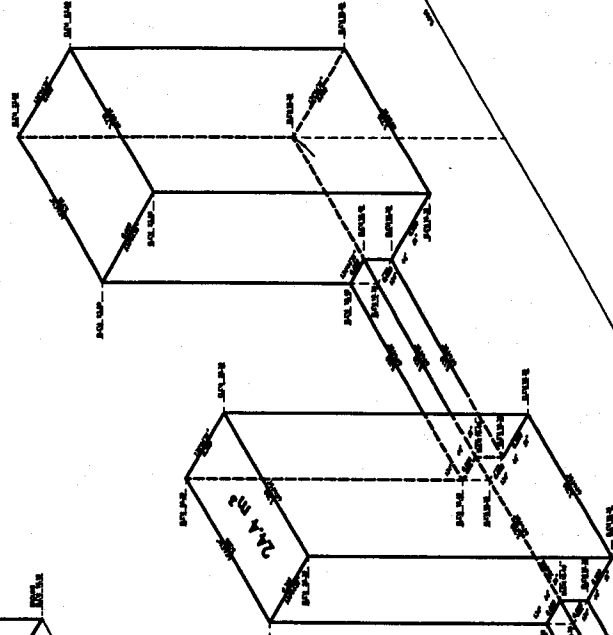
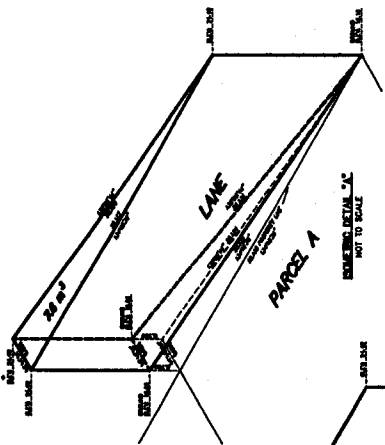
I, **WILLIAM P. WONG**, a British Columbia Land Surveyor, of the City of Burnaby, in British Columbia, certify that I was present at and personally supervised the survey represented by this plan, and that the survey and plan are correct. The survey was completed on the 11th day of March, 2003.

W.P. Wong
 B.C.L.S. (#697)

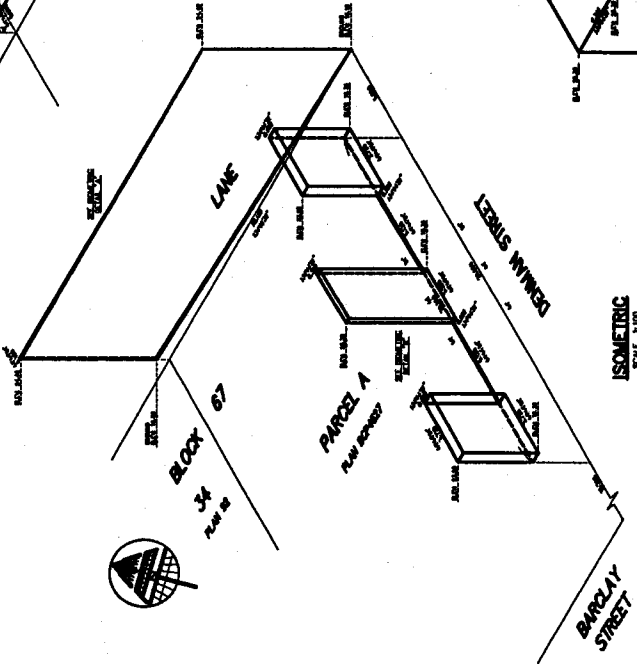
PLAN BCP
 REF. NO.
 Approved by the Local Planning Authority
 on the 24th day of May 1982

APPENDIX B

WESTMINSTER CITY COUNCIL
 Planning Department
 11th Floor
 11th Floor
 11th Floor



ISOMETRIC DETAIL 'X'
 NOT TO SCALE

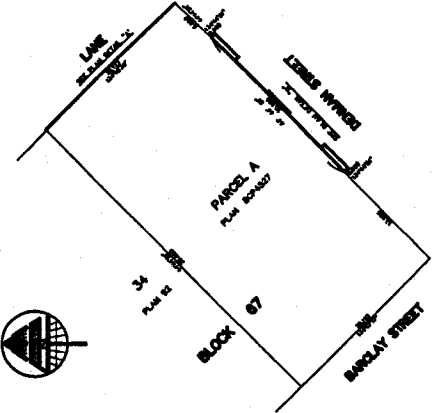
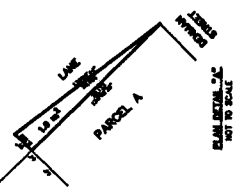


ISOMETRIC
 SCALE 1:100



EXPLANATORY PLAN OF VOLUMETRIC EASEMENT OVER PORTIONS
 OF ROAD INCLUDED IN REFERENCE PLAN BCP
 DEDICATED BY PLAN 92 ADJACENT TO PARCEL 'A' BLOCK 67
 DISTRICT LOT 185 GROUP 1 NEW WESTMINSTER DISTRICT
 PLAN BCP-4627
 B.C.G.S. 620.025

LEGEND:
 ...
 ...



PLAN
 SCALE 1:500



TOTAL EASEMENT AREA: 7.0 m²
 TOTAL EASEMENT VOLUME: 32.0 m³

WESTMINSTER CITY COUNCIL
 Planning Department
 11th Floor
 11th Floor
 11th Floor