

----- ZONING BOUNDARY

3122 KINGS AVENUE DE 407188

CITY OF VANCOUVER PLANNING DEPARTMENT

DATE 2003 04 01

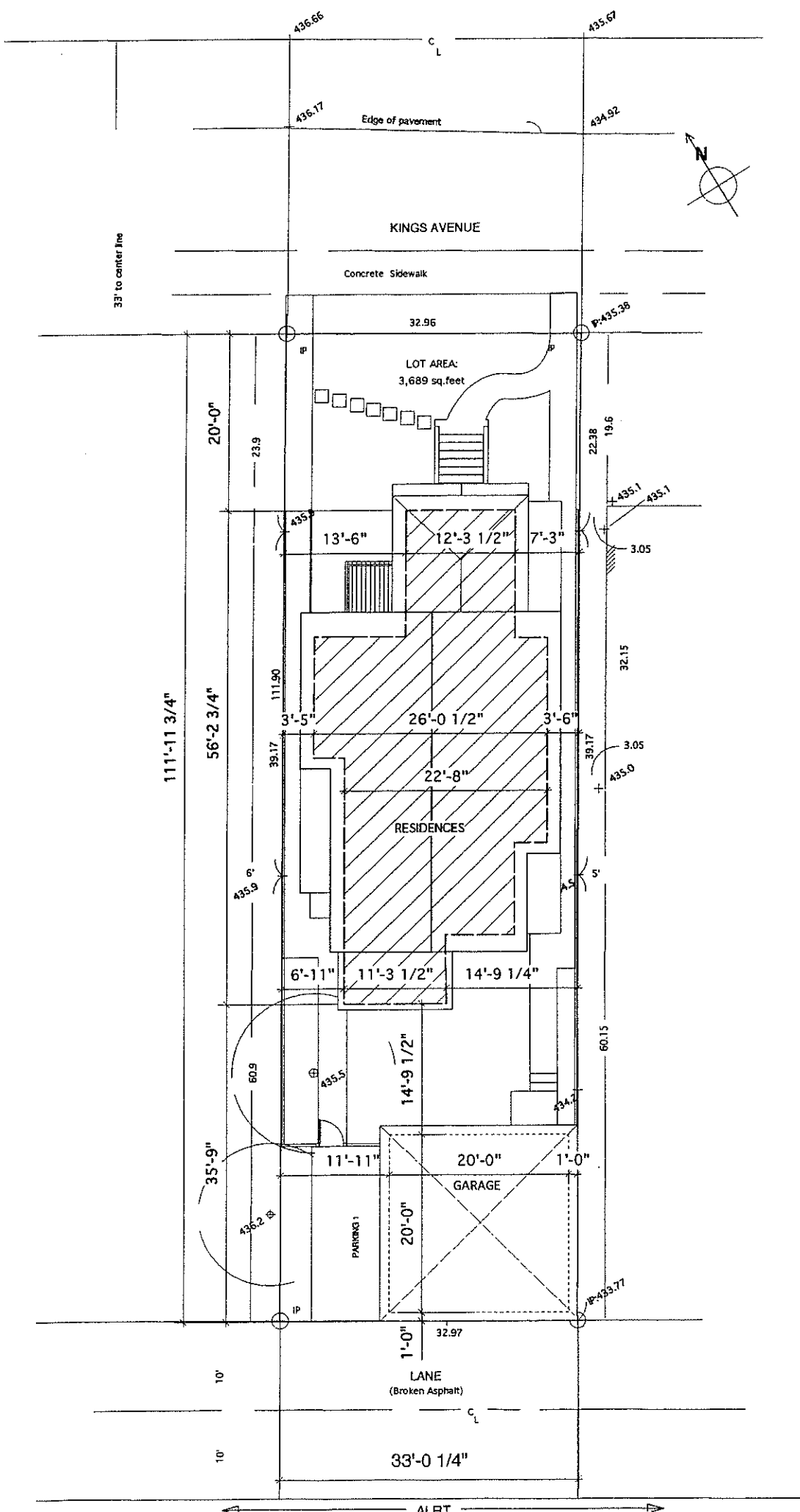
DRAWN AGM

SCALE 1:2000



Kings Ave.  
Residences  
3122  
Kings Avenue  
Vancouver,  
B.C.

Studio Senbel, and  
201 - 304 W. Cordova St.  
Vancouver, B.C. V6B 1E8  
t 604.685.6995 f 604.685.6993  
studio@senbel.com



issue

1 D.P. additions  
March 11, 2003

notes

drawing

Building  
Footprint

page no.

SK-1

scale : 1/16" = 1'-0"



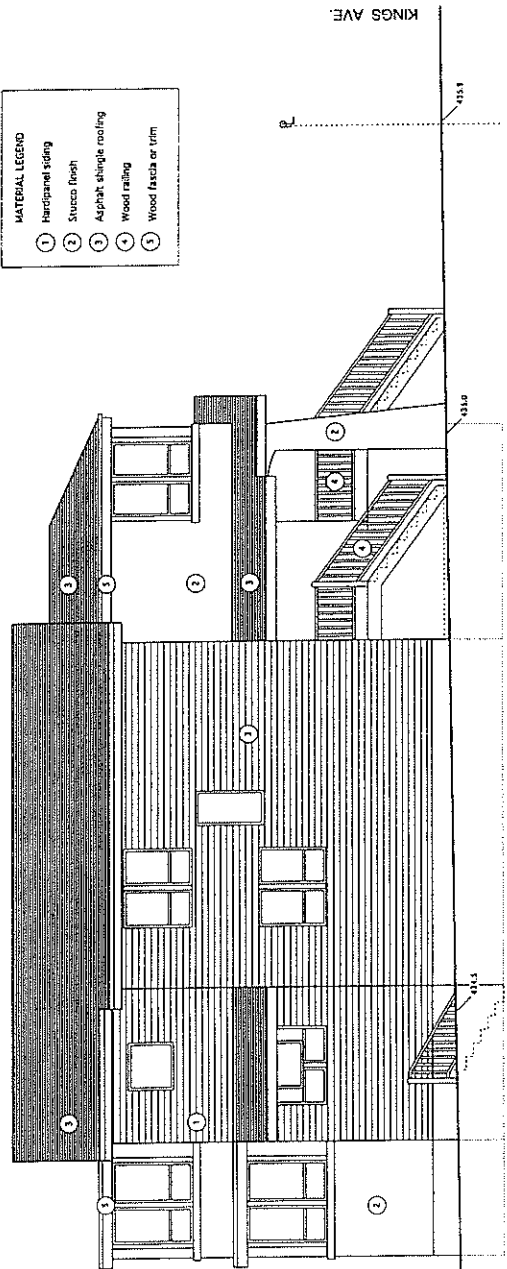
Kings Ave.  
Residences  
3122  
Kings Avenue  
Vancouver,  
B.C.

201 - 2nd Floor  
202 - 3rd Floor  
203 - 4th Floor  
204 - 5th Floor  
205 - 6th Floor  
206 - 7th Floor  
207 - 8th Floor  
208 - 9th Floor  
209 - 10th Floor  
210 - 11th Floor  
211 - 12th Floor  
212 - 13th Floor  
213 - 14th Floor  
214 - 15th Floor  
215 - 16th Floor  
216 - 17th Floor  
217 - 18th Floor  
218 - 19th Floor  
219 - 20th Floor  
220 - 21st Floor  
221 - 22nd Floor  
222 - 23rd Floor  
223 - 24th Floor  
224 - 25th Floor  
225 - 26th Floor  
226 - 27th Floor  
227 - 28th Floor  
228 - 29th Floor  
229 - 30th Floor  
230 - 31st Floor  
231 - 32nd Floor  
232 - 33rd Floor  
233 - 34th Floor  
234 - 35th Floor  
235 - 36th Floor  
236 - 37th Floor  
237 - 38th Floor  
238 - 39th Floor  
239 - 40th Floor  
240 - 41st Floor  
241 - 42nd Floor  
242 - 43rd Floor  
243 - 44th Floor  
244 - 45th Floor  
245 - 46th Floor  
246 - 47th Floor  
247 - 48th Floor  
248 - 49th Floor  
249 - 50th Floor  
250 - 51st Floor  
251 - 52nd Floor  
252 - 53rd Floor  
253 - 54th Floor  
254 - 55th Floor  
255 - 56th Floor  
256 - 57th Floor  
257 - 58th Floor  
258 - 59th Floor  
259 - 60th Floor  
260 - 61st Floor  
261 - 62nd Floor  
262 - 63rd Floor  
263 - 64th Floor  
264 - 65th Floor  
265 - 66th Floor  
266 - 67th Floor  
267 - 68th Floor  
268 - 69th Floor  
269 - 70th Floor  
270 - 71st Floor  
271 - 72nd Floor  
272 - 73rd Floor  
273 - 74th Floor  
274 - 75th Floor  
275 - 76th Floor  
276 - 77th Floor  
277 - 78th Floor  
278 - 79th Floor  
279 - 80th Floor  
280 - 81st Floor  
281 - 82nd Floor  
282 - 83rd Floor  
283 - 84th Floor  
284 - 85th Floor  
285 - 86th Floor  
286 - 87th Floor  
287 - 88th Floor  
288 - 89th Floor  
289 - 90th Floor  
290 - 91st Floor  
291 - 92nd Floor  
292 - 93rd Floor  
293 - 94th Floor  
294 - 95th Floor  
295 - 96th Floor  
296 - 97th Floor  
297 - 98th Floor  
298 - 99th Floor  
299 - 100th Floor

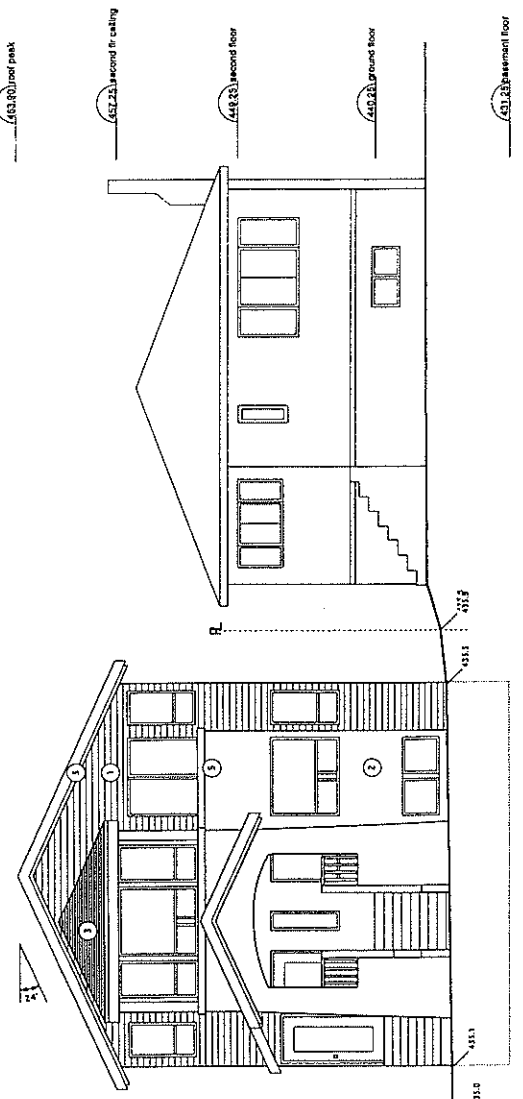
1  
2  
3  
4  
5  
6  
7  
8  
9  
10  
11  
12  
13  
14  
15  
16  
17  
18  
19  
20  
21  
22  
23  
24  
25  
26  
27  
28  
29  
30  
31  
32  
33  
34  
35  
36  
37  
38  
39  
40  
41  
42  
43  
44  
45  
46  
47  
48  
49  
50  
51  
52  
53  
54  
55  
56  
57  
58  
59  
60  
61  
62  
63  
64  
65  
66  
67  
68  
69  
70  
71  
72  
73  
74  
75  
76  
77  
78  
79  
80  
81  
82  
83  
84  
85  
86  
87  
88  
89  
90  
91  
92  
93  
94  
95  
96  
97  
98  
99  
100

Elevations  
N & E

- MATERIAL LEGEND**
- ① Hardpanel siding
  - ② Stucco finish
  - ③ Asphalt shingle roofing
  - ④ Wood rafter
  - ⑤ Wood fascia or trim



EAST ELEVATION



NORTH ELEVATION

1000 Kings Ave. West  
 Vancouver, B.C. V6H 1C1  
 Tel: 604-273-1111  
 Fax: 604-273-1112  
 www.royal.lepage.ca

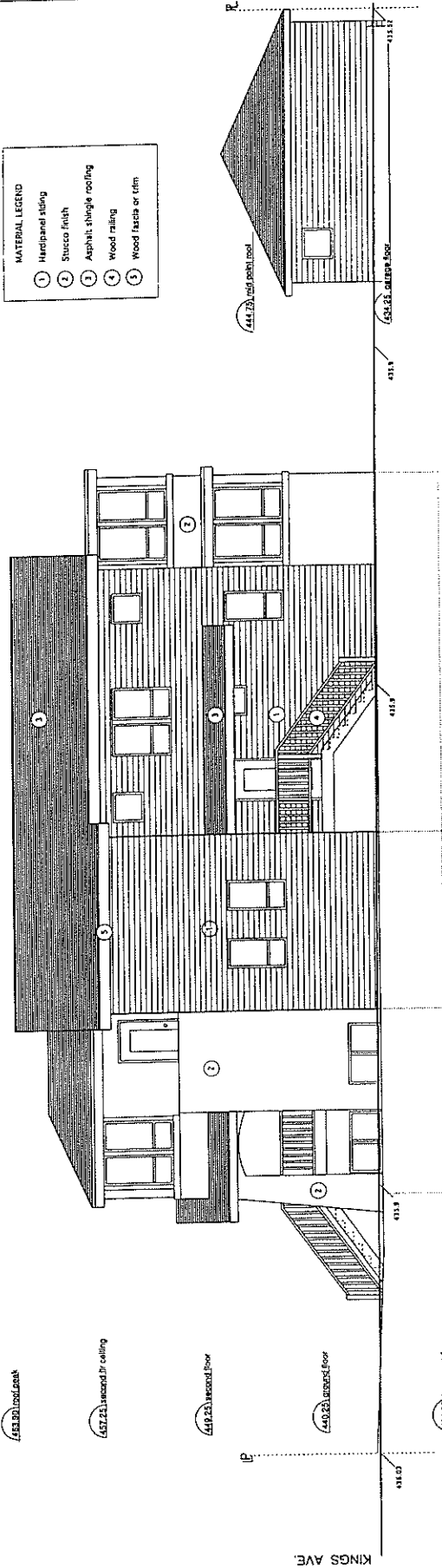
Kings Ave.  
 Residences  
 3122  
 Kings Avenue  
 Vancouver,  
 B.C.

152010  
 01 - Addition  
 Project No. 152010

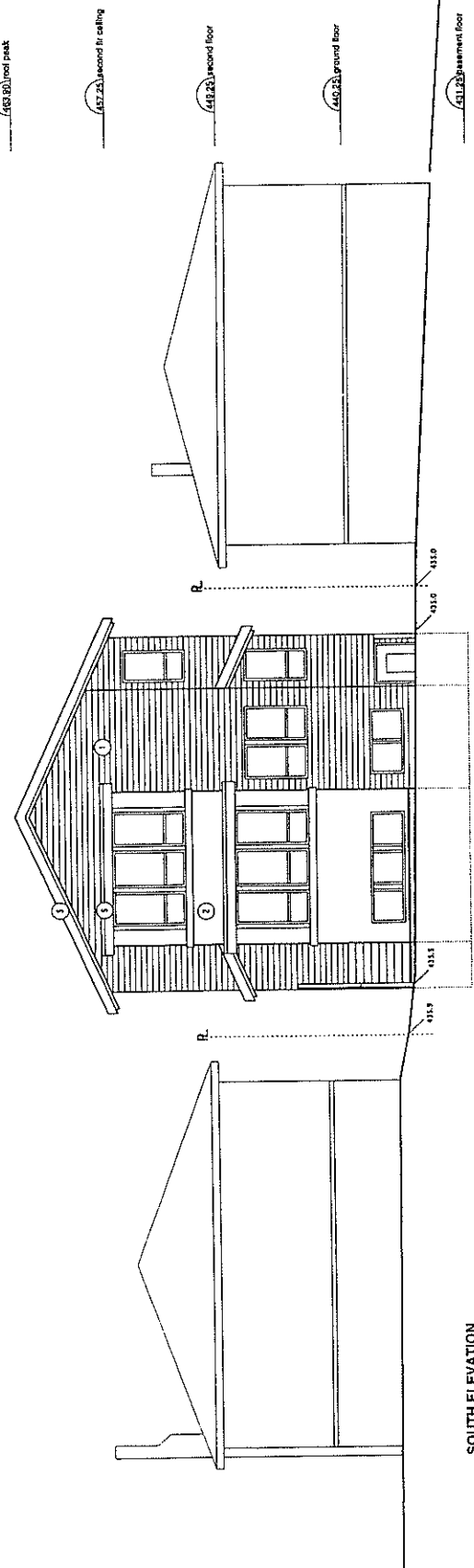
Elevations  
 S & W

**MATERIAL LEGEND**

- 1 Hardpanel siding
- 2 Stucco finish
- 3 Asphalt shingle roofing
- 4 Wood railing
- 5 Wood fascia or trim



WEST ELEVATION

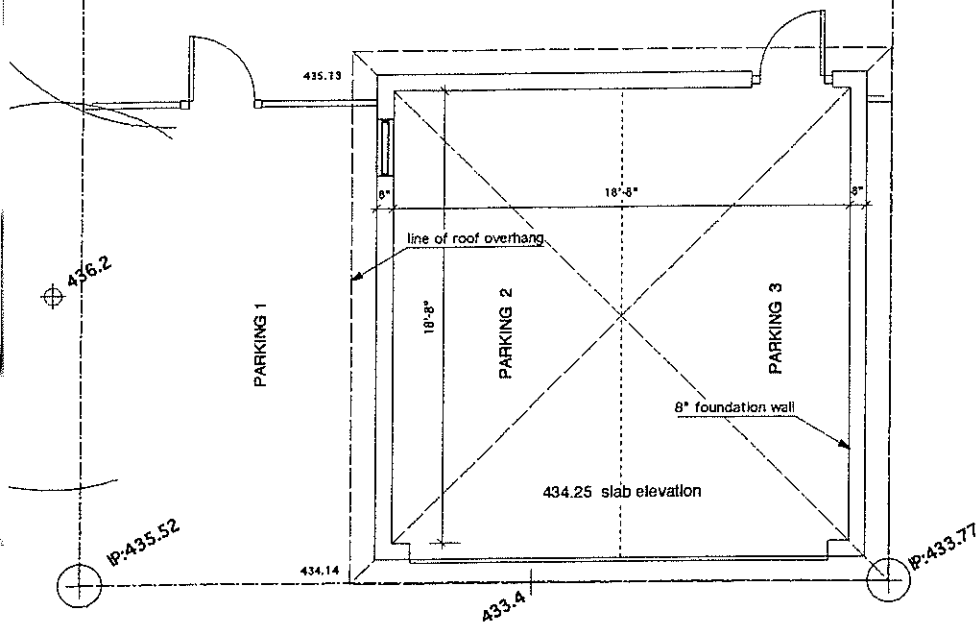


SOUTH ELEVATION

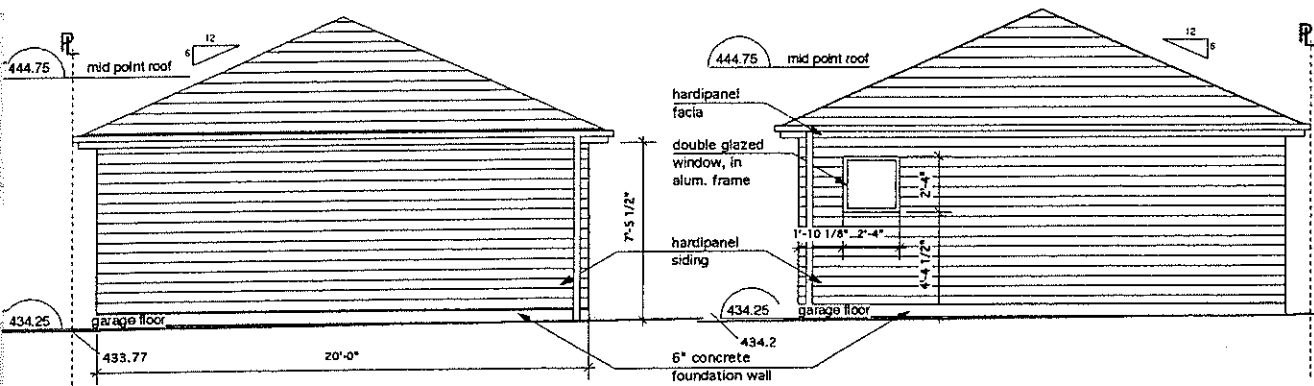
page no. drawing notes

Kings Ave.  
Residences  
3122  
Kings Avenue  
Vancouver,  
B.C.

Studio Senbel, Inc.  
201-304 W. Cambus St.  
Vancouver, B.C. V6B 1E8  
Tel: 604.683.9955 Fax: 604.683.9953  
studio@senbel.com

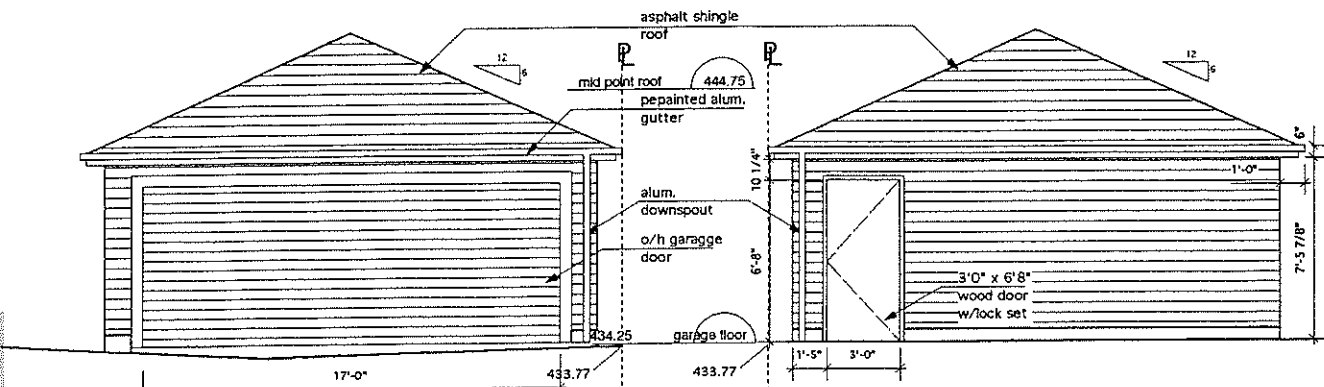


PLAN



EAST ELEVATION

WEST ELEVATION



SOUTH ELEVATION

NORTH ELEVATION

issue
1 D.P. additions March 11, 2003

notes

drawing

GARAGE  
DWGS

page no.

SK-2

