

REFERENCE PLAN TO ACCOMPANY AN APPLICATION FOR THE REGISTRATION OF TITLE IN THE NAME OF THE CITY OF VANCOUVER TO THAT PORTION OF ROAD DEDICATED BY THE DEPOSIT OF PLAN 210 ADJACENT TO LOT C BLOCK 8 DISTRICT LOT 541 GROUP 1 N.W.D. PLAN BCP1680.

B.C.G.S. 92G.025

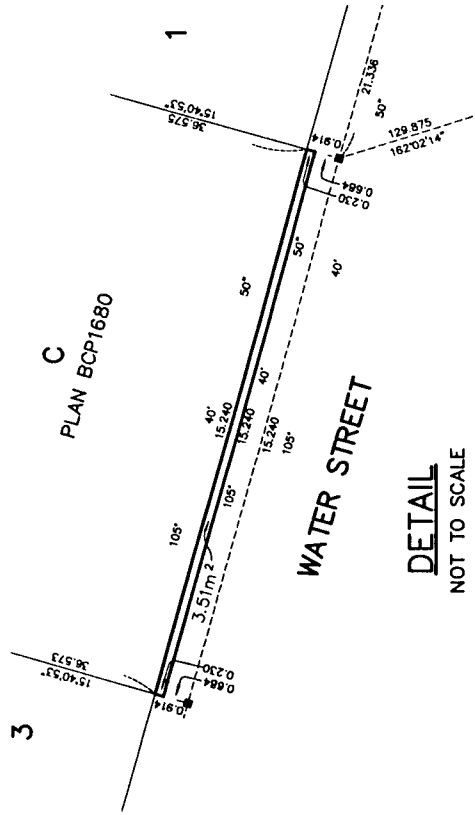
PLAN BCP

REF. No. _____

Deposited in the Land Title Office at New Westminster, B.C. This _____ day of _____ 20 _____

Deputy Registrar

This plan lies within the Greater Vancouver Regional District



DETAIL NOT TO SCALE

OWNER: CITY OF VANCOUVER

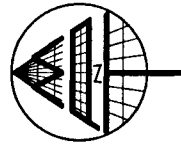
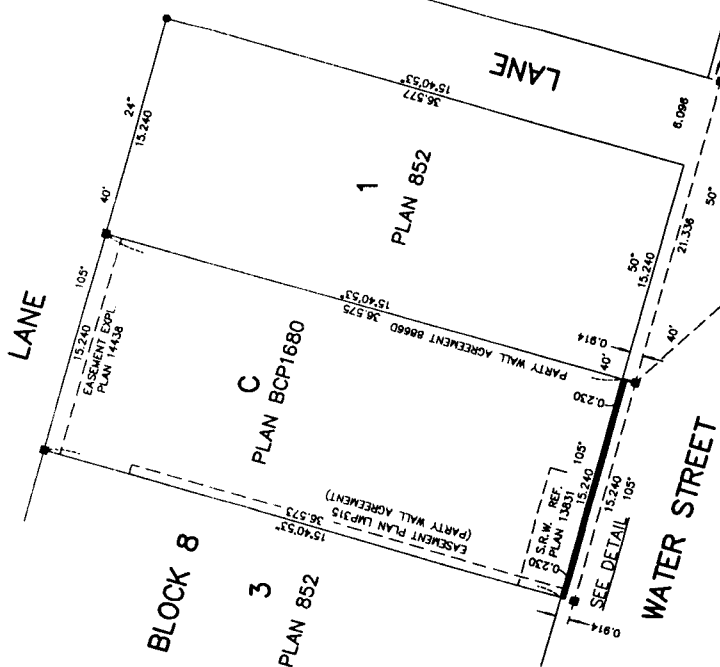
Authorized Signatory

Authorized Signatory

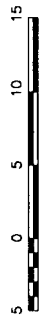
Witness as to both

Occupation of Witness

Address of Witness



LEGEND SCALE 1:250



All distances are in metres

Grid bearings are derived from observations between control monuments DTS152 and V2176, NAD83 (CRS) Integrated Survey Area No. 31, City of Vancouver

- Indicates Control Monument Found
- Indicates Standard Iron Post Found
- Indicates Lead Plug Found

This plan shows ground level measured distances. Prior to computation of U.T.M. co-ordinates, multiply by mean combined factor 0.9999028.

MATSON PECK & TOPUSS SURVEYORS & ENGINEERS

#210 - 8171 Cook Road Richmond, B.C. V6Y 3J8

Ph: 604-270-9331 Fax: 604-270-4137

CADFILE: 13005-REF-1-REV/FLX

I, WILLIAM P. WONG, a British Columbia Land Surveyor, of the City of Burnaby, in British Columbia, certify that I was present at and personally supervised the survey represented by this plan, and that the survey and plan are correct. The survey was completed on the 6th day of November, 2002.

Signature of William P. Wong, B.C.L.S. (#697)

EXPLANATORY PLAN OF VOLUMETRIC EASEMENT OVER A PORTION OF ROAD INCLUDED IN REFERENCE PLAN BCP_ _ _ _ _ DEDICATED BY PLAN 210 ADJACENT TO LOT C BLOCK 8 DISTRICT LOT 541 GROUP 1 N.W.D. PLAN BCP1680
 B.C.G.S. 92G.025

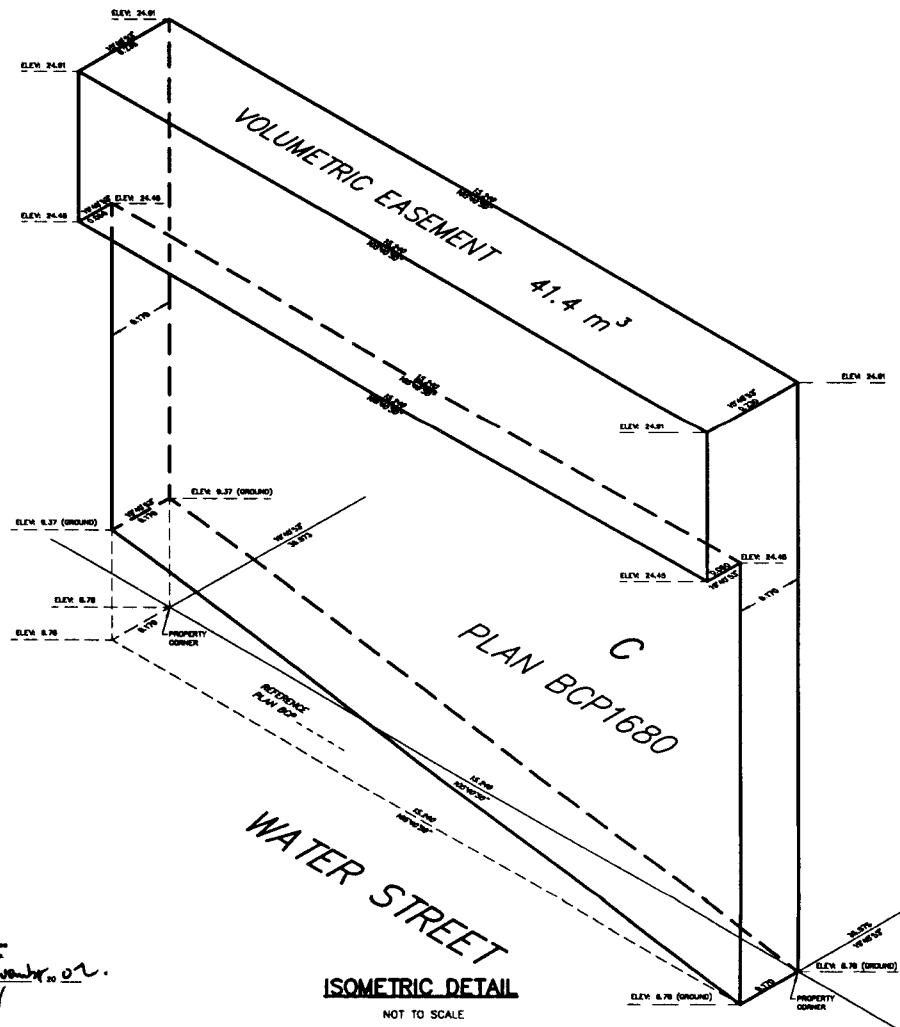
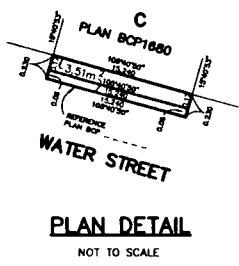
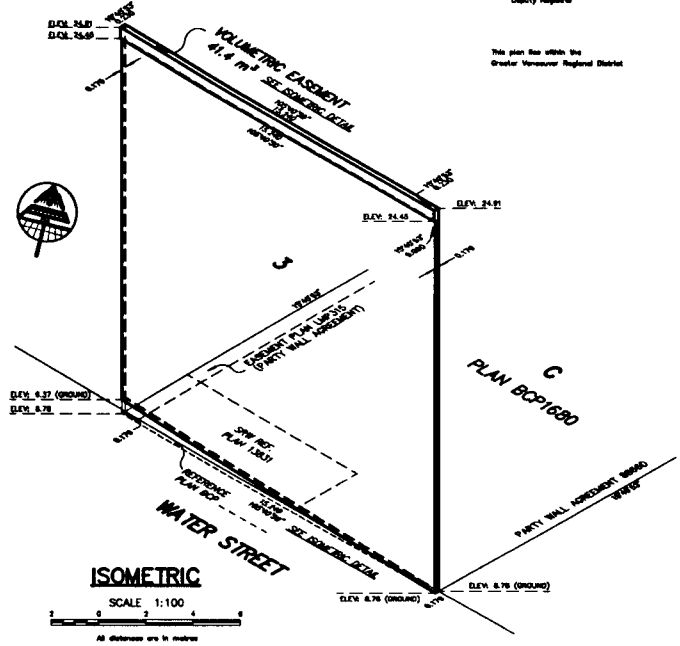
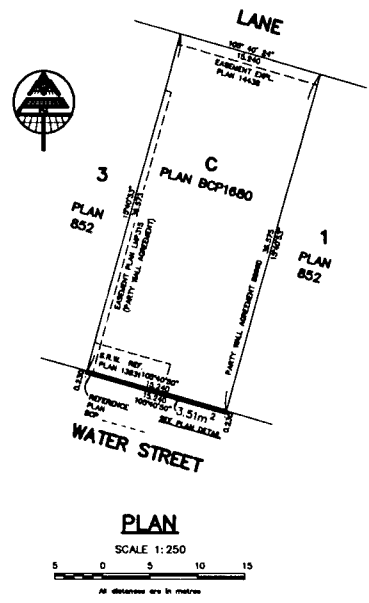
PLAN BCP

REF. No. _____

Downloaded in the Land Title Office
 of New Brunswick, B.C.
 This ___ day of _____ 20__

Deputy Registrar

This plan fits within the
 Greater Vancouver Regional District



LEGEND:
 ALL DIMENSIONS ARE IN METRIC.
 BIRD MEASUREMENTS ARE OBTAINED FROM PLAN BCP1680 INTEGRATED SURVEY AREA No. 21, CITY OF WHOOVER.
 THIS PLAN SHOWS BOUNDARY LEVEL MEASUREMENTS OBTAINED PRIOR TO COMPUTATION OF UTM CO-ORDINATE MULTIPLY BY MEAN CORRECTION FACTOR OF 0.9999999999.
 ELEVATIONS ARE IN GEODETIC DATUM AND ARE DERIVED FROM INTEGRATED SURVEY MONUMENT WITH ELEVATION 8.97 METRES.
 ELEV. GEODETIC ELEVATION
 m² DENOTES SQUARE METRES
 m³ DENOTES CUBIC METRES

MATSON PECK & TOPLISS
 SURVEYORS & ENGINEERS
 2110 - 8171 Oakh Road
 Richmond, B.C.
 V6V 2T8
 Ph: 604-270-8331
 Fax: 604-270-8137
 CADFILE: 13005-1-AM-SPACE.PLX
 V-02-13005-SRW

Certified correct in accordance
 with Land Title Office records.
 This 6th day of November 20__

 B.C. Land Surveyor (2007)