

REFERENCE PLAN TO ACCOMPANY RESOLUTION OF THE COUNCIL OF THE CITY OF VANCOUVER ESTABLISHING FOR HIGHWAY PURPOSES A PORTION OF LOT 4, EXCEPT THE WEST 7 FEET, NOW ROAD BLOCK M, DISTRICT LOT 328, PLAN 2041, GROUP 1, NEW WESTMINSTER DISTRICT

PLAN BCP

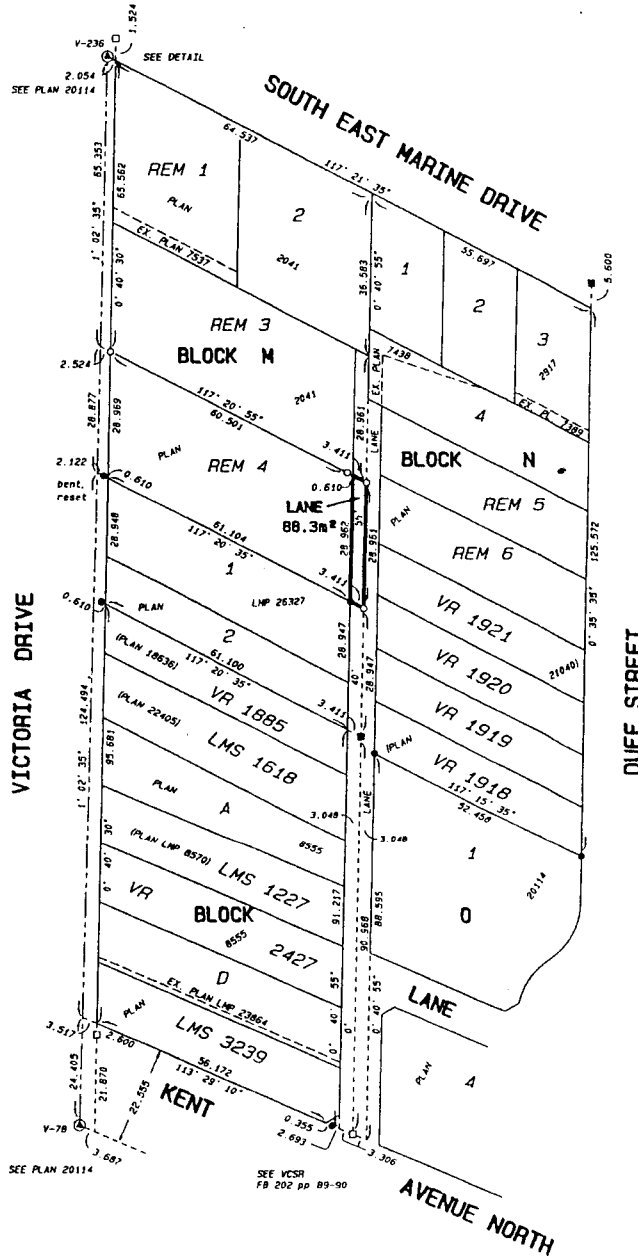
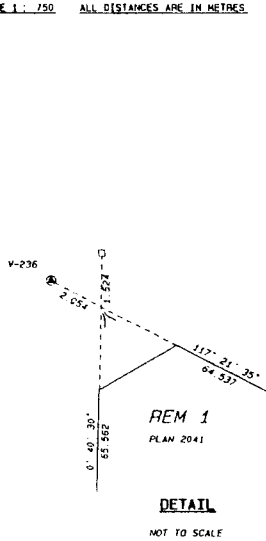
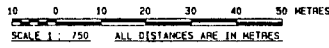
DEPOSITED IN THE LAND TITLE OFFICE AT NEW WESTMINSTER, BRITISH COLUMBIA THIS DAY OF 2002

REGISTRAR

REF.

PURSUANT TO SECTION 99(1) (f), LAND TITLE ACT

B. C. S. 926.025



INTEGRATED SURVEY AREA 31, CITY OF VANCOUVER, NAD83 (CSRS)

THIS PLAN SHOWS GROUND-LEVEL MEASURED DISTANCES PRIOR TO COMPUTATION OF U.T.M. CO-ORDINATES. MULTIPLY BY COMBINED FACTOR OF 0.9998007

GRID BEARINGS ARE DERIVED FROM OBSERVATIONS BETWEEN CONTROL MONUMENTS V-78 AND V-236

- Control Monument Found
Standard Iron Post Found
Lead Plug Found
Standard Iron Post Placed
Lead Plug Placed
Unregistered
Square Metres
VCSR Vancouver City Survey Records

I, ERIC I. KAARDAL, A BRITISH COLUMBIA LAND SURVEYOR OF THE CITY OF NEW WESTMINSTER IN BRITISH COLUMBIA, CERTIFY THAT I WAS PRESENT AT AND PERSONALLY SUPERINTENDED THE SURVEY REPRESENTED BY THIS PLAN AND THAT THE SURVEY AND PLAN ARE CORRECT. THE SURVEY WAS COMPLETED ON THE 28th DAY OF OCTOBER, 2002.

Eric I. Kaardal signature

CITY OF VANCOUVER 873-7148 B.C.L.S.