

--- ZONING BOUNDARY

583 BEACH CRESCENT DE 406178

DATE 2002 08 01

DRAWN WGS



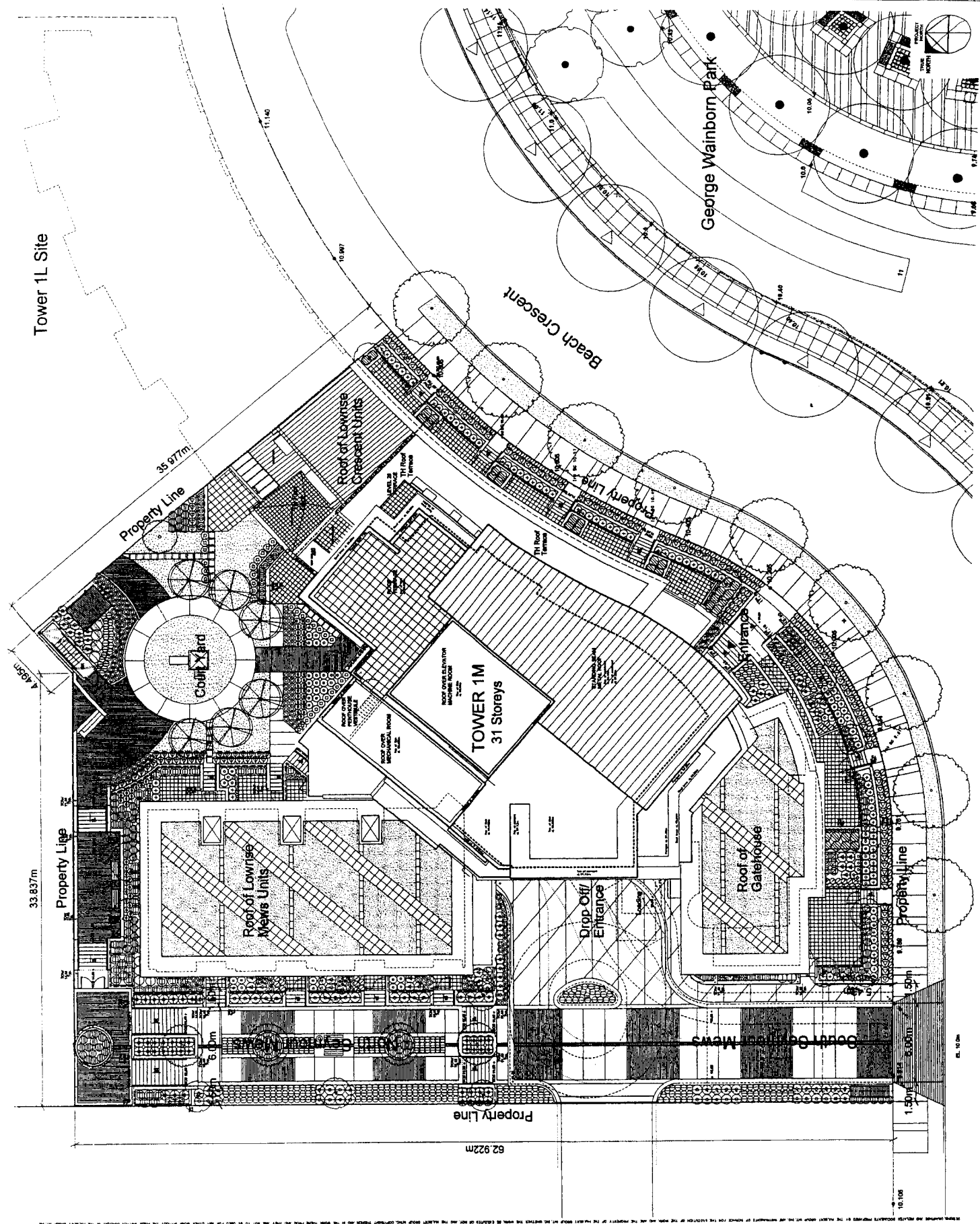
CITY OF VANCOUVER PLANNING DEPARTMENT

FILENAME :G:\UDDP\FORM OF DEVELOPMENT\583 BEACH CRES.DWG

REVISION / REV.	DATE
1	2011.04.14
2	2011.04.14
3	2011.04.14
4	2011.04.14
5	2011.04.14
6	2011.04.14
7	2011.04.14
8	2011.04.14
9	2011.04.14
10	2011.04.14
11	2011.04.14
12	2011.04.14
13	2011.04.14
14	2011.04.14
15	2011.04.14
16	2011.04.14
17	2011.04.14
18	2011.04.14
19	2011.04.14
20	2011.04.14
21	2011.04.14
22	2011.04.14
23	2011.04.14
24	2011.04.14
25	2011.04.14
26	2011.04.14
27	2011.04.14
28	2011.04.14
29	2011.04.14
30	2011.04.14
31	2011.04.14
32	2011.04.14
33	2011.04.14
34	2011.04.14
35	2011.04.14
36	2011.04.14
37	2011.04.14
38	2011.04.14
39	2011.04.14
40	2011.04.14
41	2011.04.14
42	2011.04.14
43	2011.04.14
44	2011.04.14
45	2011.04.14
46	2011.04.14
47	2011.04.14
48	2011.04.14
49	2011.04.14
50	2011.04.14
51	2011.04.14
52	2011.04.14
53	2011.04.14
54	2011.04.14
55	2011.04.14
56	2011.04.14
57	2011.04.14
58	2011.04.14
59	2011.04.14
60	2011.04.14
61	2011.04.14
62	2011.04.14
63	2011.04.14
64	2011.04.14
65	2011.04.14
66	2011.04.14
67	2011.04.14
68	2011.04.14
69	2011.04.14
70	2011.04.14
71	2011.04.14
72	2011.04.14
73	2011.04.14
74	2011.04.14
75	2011.04.14
76	2011.04.14
77	2011.04.14
78	2011.04.14
79	2011.04.14
80	2011.04.14
81	2011.04.14
82	2011.04.14
83	2011.04.14
84	2011.04.14
85	2011.04.14
86	2011.04.14
87	2011.04.14
88	2011.04.14
89	2011.04.14
90	2011.04.14
91	2011.04.14
92	2011.04.14
93	2011.04.14
94	2011.04.14
95	2011.04.14
96	2011.04.14
97	2011.04.14
98	2011.04.14
99	2011.04.14
100	2011.04.14

NOTE: NOT FOR CONSTRUCTION  
 THE DRAWING IS TO BE USED FOR REFERENCE PURPOSES ONLY

TOWER 1M - AREA 1A  
 BEACH NEIGHBOURHOOD FALSE CREEK NORTH VANCOUVER, B.C.  
 FOR: PACIFIC PLACE DEVELOPMENT CORPORATION

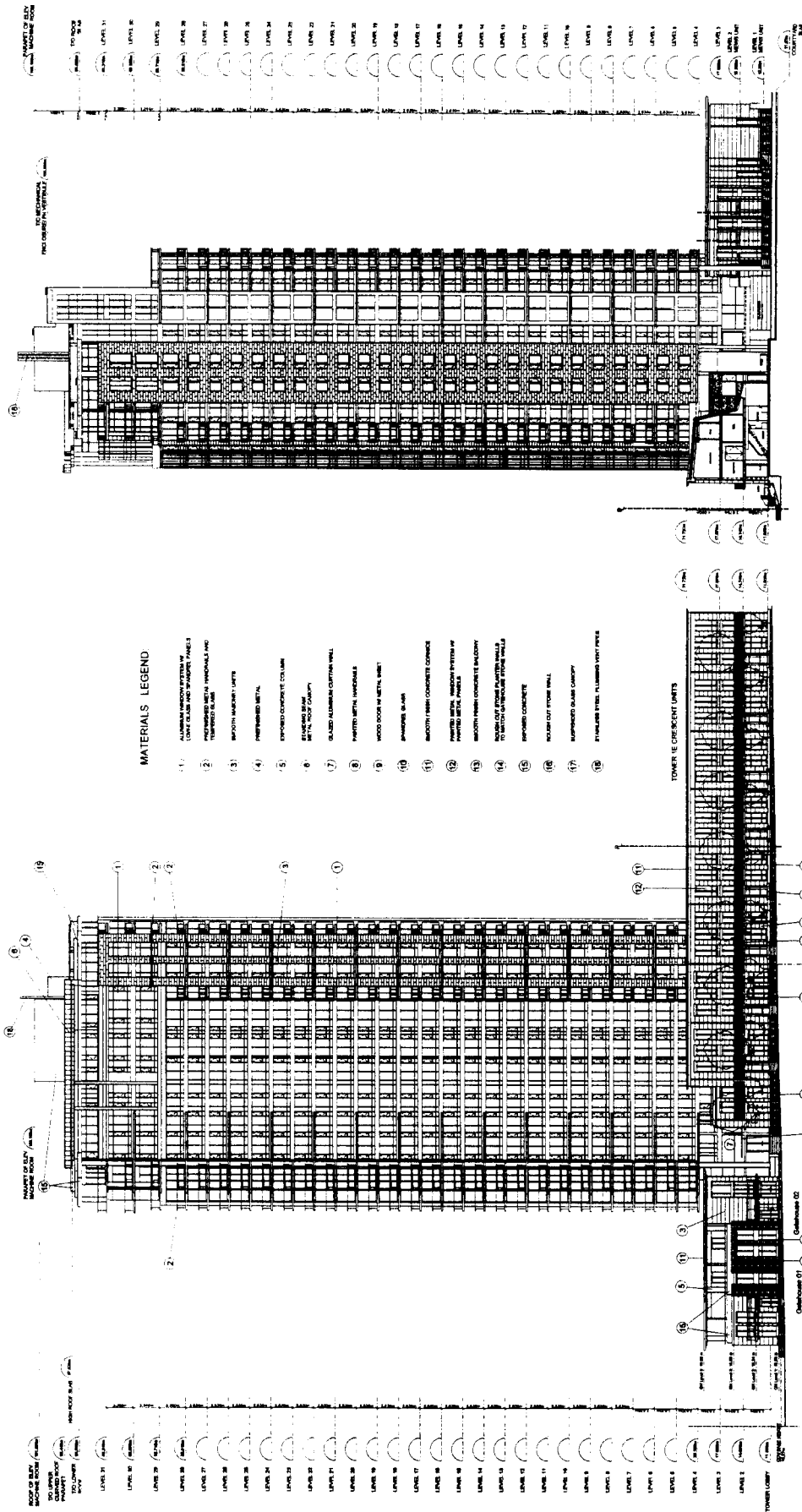


Tower 1L Site

NOTE: NOT FOR CONSTRUCTION  
 THIS DRAWING IS TO BE USED FOR REFERENCE PURPOSES ONLY

TOWER 1M - AREA 1A  
 FOR: PACIFIC PLACE DEVELOPMENT CORPORATION  
 BEACH NEIGHBOURHOOD, FALSE CREEK NORTH, VANCOUVER, B.C.

CRESCENT & COURTYARD ELEVATIONS

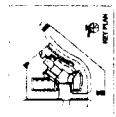


**MATERIALS LEGEND**

- 1 ALUMINUM WINDOW SYSTEM BY (NAME GLASS AND TRANSOM) PANELS
- 2 POLYURETHANE FINISH PANELS AND TRANSOM PANELS
- 3 BRONZE ANODIZED ALUMINUM
- 4 PREFINISHED METAL
- 5 EXPANDED CONCRETE COLUMN
- 6 EXPANDED BEAM
- 7 GALVALUM ALUMINUM CLIFFHANG WALL
- 8 PAINTED METAL INVERTIBLES
- 9 WOOD DOOR BY METAL SHEET
- 10 GRANITE SLAB
- 11 BRONZE TINTED CONCRETE CORNICE
- 12 PAINTED METAL WINDOW SYSTEM BY (NAME) PANELS
- 13 BRONZE TINTED CONCRETE BALCONY
- 14 BRONZE TINTED CONCRETE BALCONY TO MATCH BALCONY SYSTEM WALLS
- 15 REINFORCED CONCRETE
- 16 SOLID CORE STYRENE WALL
- 17 SUPPLEMENTAL ALUMINUM CORNICE
- 18 STAINLESS STEEL ALUMINUM VENT PANELS

2 COURTYARD ELEVATION  
 SCALE 1/200

1 CRESCENT ELEVATION  
 SCALE 1/200

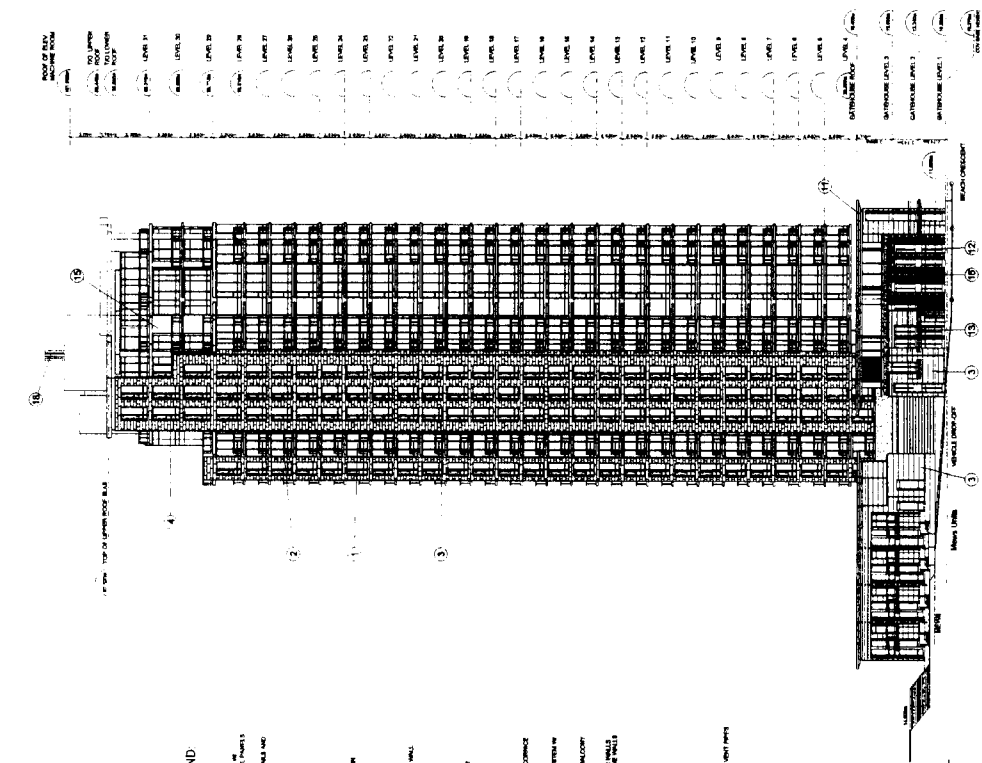


**NOTE NOT FOR CONSTRUCTION**  
THIS DRAWING IS FOR REFERENCE ONLY  
AND COORDINATION PURPOSES ONLY

FOR: PACIFIC PLACE DEVELOPMENT CORPORATION  
BEACH NEIGHBOURHOOD FALSE CREEK NORTH VANCOUVER, B.C.

**TOWER 1M - AREA 1A**

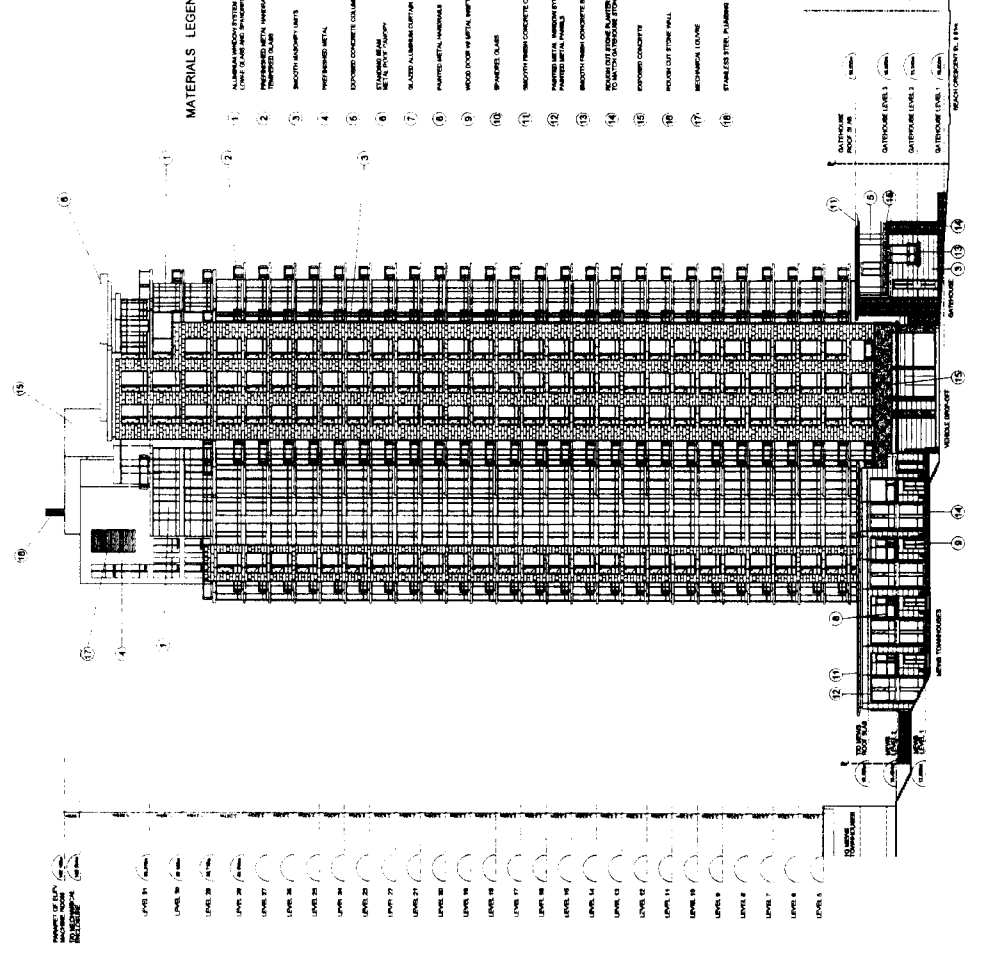
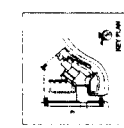
MEWS and SOUTHWEST CORNER ELEVATIONS  
DATE: 2017.07.19  
DRAWN BY: [Name]  
CHECKED BY: [Name]



**MATERIALS LEGEND**

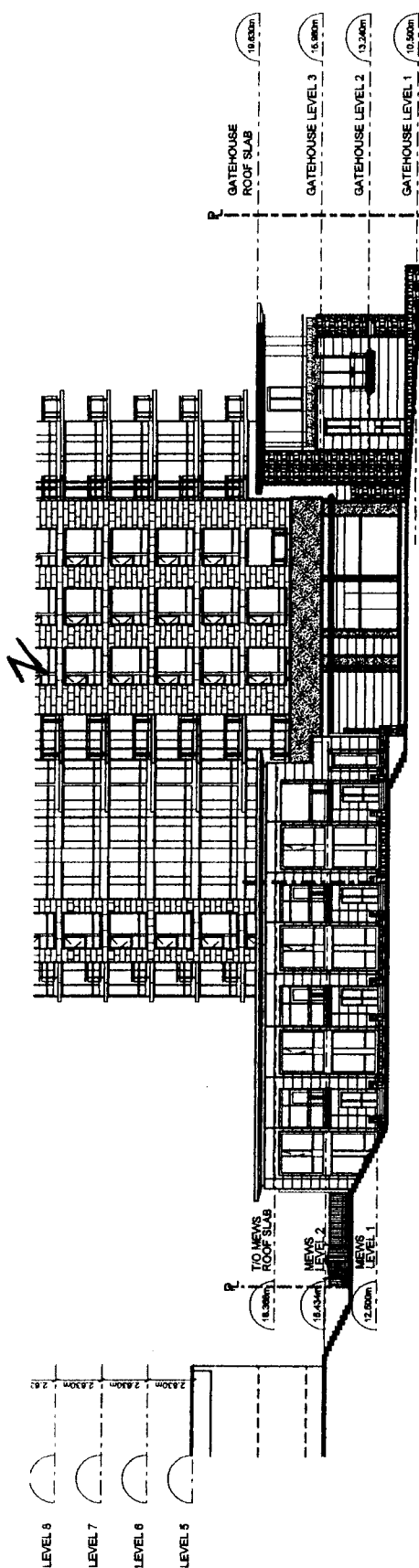
1. ALUMINA LAMINON SYSTEM W/ (LEVEL 2 GLASS AND STAINLESS STEEL) PANELS
2. PAINTED METAL, HORIZONTAL AND VERTICAL SLATS
3. SMOOTH ALUMINUM PANELS
4. PAINTED METAL
5. EXPOSED CONCRETE COLUMN
6. EXPOSED BALCONY METAL RAIL SYSTEM
7. GLAZED ALUMINUM CURTAIN WALL
8. PAINTED METAL, HORIZONTAL
9. WOOD JOIST W/ METAL SHEET
10. BRICK CLASH
11. SMOOTH FIBRE CONCRETE CORNER
12. PAINTED METAL, MEDIUM EXTENSION PAINTED METAL PANELS
13. SMOOTH FIBRE CONCRETE RAILCOY
14. SMOOTH FIBRE CONCRETE RAILCOY TO MATCH EXISTING STONE WALLS
15. EXPOSED CONCRETE
16. BRICK CLASH STONE WALL
17. MECHANICAL CURTAIN
18. STAINLESS STEEL PLUMBING VENT CAPS

3. MEWS ELEVATION  
SCALE 1:200

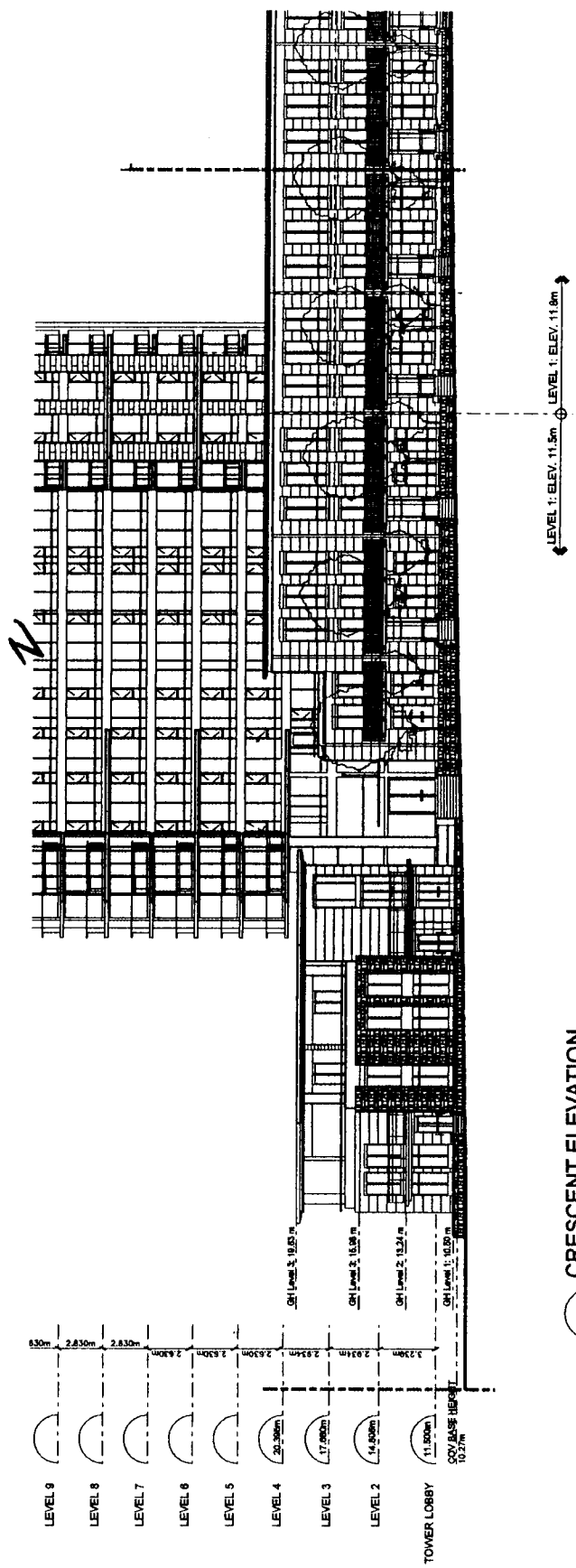


4. SOUTHWEST ELEVATION  
SCALE 1:200





MEWS ELEVATION  
SCALE 1:100



CRESCENT ELEVATION  
SCALE 1:100

