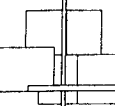



Appendix 3: City Choices Questionnaire



City Choices 2002: What's Your Choice?

Appendix 3: Questionnaire Responses

April 2002



City Choices Questionnaire: The Results

- **City Choices 2002** flyer distributed through
 - ✓ Courier community newspaper
 - ✓ Sing Tao newspaper
 - ✓ Community Centres, Branch Libraries

- There were 1,150 responses to the questionnaire:
 - ✓ 625 by fax or mail
 - ✓ 525 completed on the website
 - ✓ Screened for duplicate entries

Appendix 3: City Choices Questionnaire

City Choices: Interpreting the Results

- Questionnaire is "self selecting": results may not be statistically significant
 - ✓ No weighting of the responses for demographic makeup of the City – the data is "raw"
 - ✓ MarkTrend survey responses were weighted
- Distribution by community newspaper
 - ✓ Responses may be more heavily weighted to owners
- Distribution of the questionnaire was in part through civic facilities
 - ✓ responses may represent interests associated with those facilities
 - ✓ sources of responses were not tracked, questionnaires were received from common fax numbers or arrived by mail in batches

City Choices 2002: Who Responded?

The questionnaire requested some basic demographic information

Where Do You Live?	Flyer	% of Population
Downtown	13.5%	11.0%
North of 16 th Ave / West of	17.0%	16.0%
North of 16 th Ave / East of	20.9%	17.0%
South of 16 th Ave / West of	20.0%	23.0%
South of 16 th Ave / East of	26.6%	33.0%
Not Specified	2.0%	-
	100.0%	100.0%

- Respondents were more heavily weighted to the north part of the City than the general population

Appendix 3: City Choices Questionnaire

City Choices 2002: Who Responded?

The questionnaire asked for some basic demographic information

Do You Own or Rent?	Flyer	MarkTrend
Rent	25.9%	47.0%
Own	74.1%	53.0%
	100.0%	100.0%

What Is Your Age?	Flyer	% of Population
18 - 44	37.9%	56.0%
45 - 64	41.3%	27.0%
65 and over	18.9%	17.0%
No Answer	1.9%	-
	100.0%	100.0%

City Choices 2002: Who Responded?

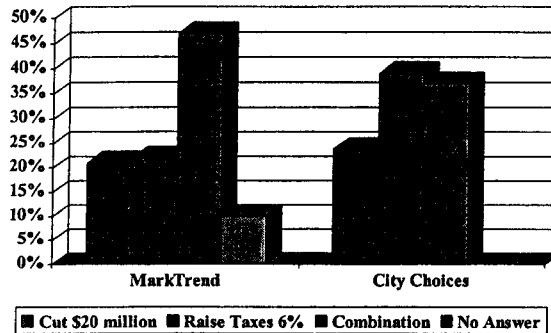
The questionnaire asked for some basic demographic information

How Long Have You Lived in Vancouver?	Flyer	% of Population
Less than 11 years	22.8%	34.0%
More than 10 years	75.6%	65.0%
No Response	1.6%	1.0%
	100.0%	100.0%

- Compared to MarkTrend, City Choices respondents tend to
 - ✓ be older
 - ✓ have lived in Vancouver longer
 - ✓ be weighted toward home ownership
 - ✓ own more valuable property

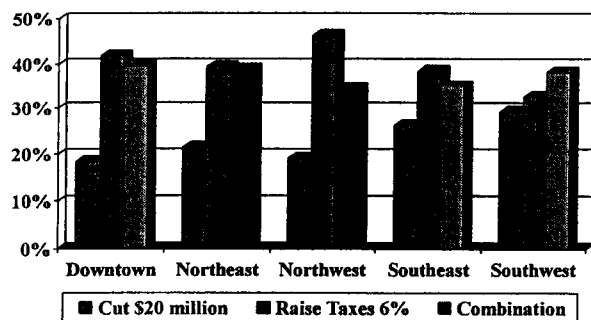
Appendix 3: City Choices Questionnaire

Question #1: Cut Service or Raise Taxes?



- Compared to MarkTrend, City Choices respondents were more willing to accept 6% tax increase to avoid service reductions
- A combination of reductions and tax increases was more popular than service cuts alone

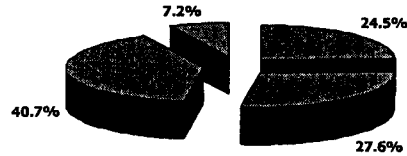
Question #1: Cut Service or Raise Taxes?



- Respondents on the south side are less supportive of tax increases and more supportive of service reductions
- A combination of reductions and tax increases more popular than service cuts alone

Appendix 3: City Choices Questionnaire

Question #2: What Combination of Service Reductions and Tax Increases?



■ Cut \$13 million / Tax 2% ■ Cut \$6 million / Tax 4% ■ No Cuts / Tax 6% □ Other

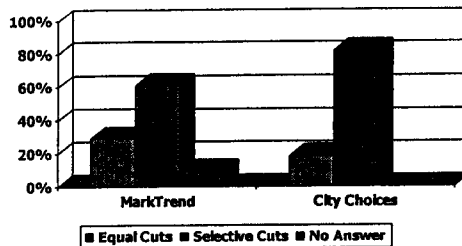
- 24% of respondents would hold tax increase to 2% by reducing services
- 68% would accept a tax increase of at least 4% to limit service reductions.
- 40% would accept a tax increase of 6% to eliminate the need for service reductions
- 7% offered other combinations (Appendix 4)

Question #2: What Combination of Service Reductions and Tax Increases?

- By age, tenancy, length of time in the City or value of property:
 - ✓ support for a small tax increase (2%) and a large component of service reductions (\$13 million) received the least support among respondents
 - ✓ support for no cuts and a 6% tax increase received the highest level of support
- 75% of MarkTrend respondents would accept a tax increase of 4% to avoid service reductions

Appendix 3: City Choices Questionnaire

Question #3: If Necessary, How Should Cuts be Applied?



- City Choices respondents indicated overwhelming support for service reductions in selected areas rather than across-the-board cuts
- Support was consistent across age, tenancy, length of time in Vancouver and property value
- City Choices respondents favoured selective reductions by a significant margin over MarkTrend respondents

Question #4: Level of Support for Various Budget Balancing Options

	Equal Cuts	Selective Cuts	Raise Taxes 6%	Combination
Strong Support	8.2%	40.6%	42.9%	27.6%
Moderate Support	12.9%	28.7%	17.3%	27.7%
Moderate Oppose	25.9%	13.6%	11.2%	20.4%
Strong Oppose	53.0%	17.1%	28.6%	24.2%
	100.0%	100.0%	100.0%	100.0%

- If Council chooses to reduce service, selective cuts have more support than across the board cuts
- If Council chooses to raise taxes, 60% support or strongly support a 6% tax increase
- 55% of respondents support a some combination of tax increase and service cuts

Appendix 3: City Choices Questionnaire

Question #5: Which 5 Service Areas Would You Protect? Which 5 Would You Reduce?


Percentage of respondents identifying services areas as areas to protect or areas to reduce

Service Area	Protect	Reduce	No Mention
Fire	66.5%	11.3%	22.0%
Police	65.5%	16.0%	18.4%
Library	54.2%	18.5%	27.3%
Streets & Traffic	49.8%	24.4%	25.8%
Recreation	45.0%	15.0%	40.0%
Parks	41.0%	28.8%	30.2%
Other Public Safety	37.4%	23.0%	39.6%
Community Services	37.4%	32.9%	29.7%
Cultural Services	26.5%	49.6%	23.9%
Planning & Development	17.1%	48.2%	34.7%
Support Services	12.4%	54.1%	33.5%
Legislative Services	5.5%	68.0%	26.4%

Question #5: Which 5 Service Areas Would You Protect? Which 5 Would You Reduce?

- Like the MarkTrend survey, City Choices gave high priority to public safety – Police and Fire
 - ✓ Three in five respondents gave these services high priority
- Support for public safety:
 - ✓ was stronger in the southern sections of the City
 - ✓ grew with age and length of time in the City
 - ✓ Was higher among homeowners than renters
 - ✓ Was more important to those with higher value homes
- Support for Libraries was also broad-based
 - ✓ Highest priority among downtown respondents
 - ✓ Support tended to decline with age and tenure in the City
 - ✓ Was of consistent importance to owners and renters

Appendix 3: City Choices Questionnaire



Question #5: Which 5 Service Areas Would You Protect? Which 5 Would You Reduce?

- 50% of respondents indicated Streets & Traffic should not be reduced while only 25% supported this area for reduction
- City Choices respondents *Parks & Recreation* has higher priority than MarkTrend respondents
- MarkTrend respondents rank *Community Services* as a much higher priority to protect from reductions than City Choices respondents
 - ✓ City Choices respondents were more evenly split on the priority of this service
- City Choices respondents ranked
 - ✓ *Cultural Services*
 - ✓ *Planning & Development Services*
 - ✓ *Support Services* and
 - ✓ *Legislative Services*as the highest priorities for reduction