

- - - - - Zoning Boundary
 - . - . - . Notification Boundary

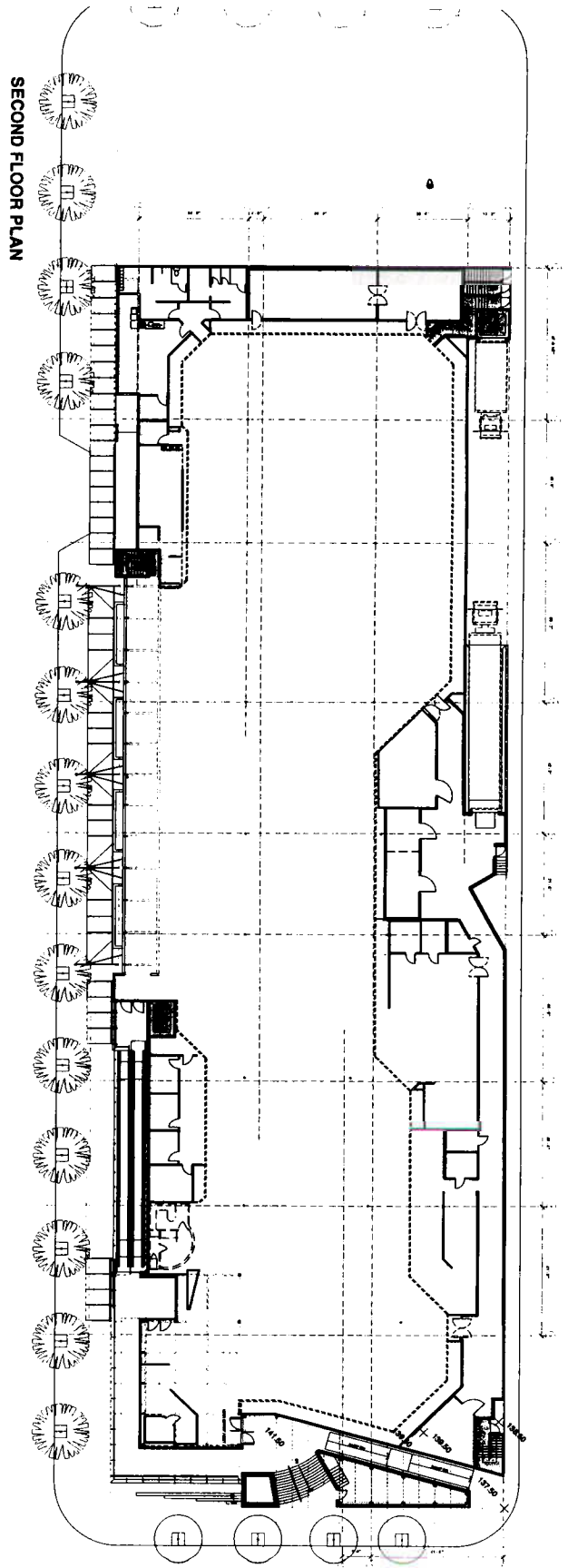
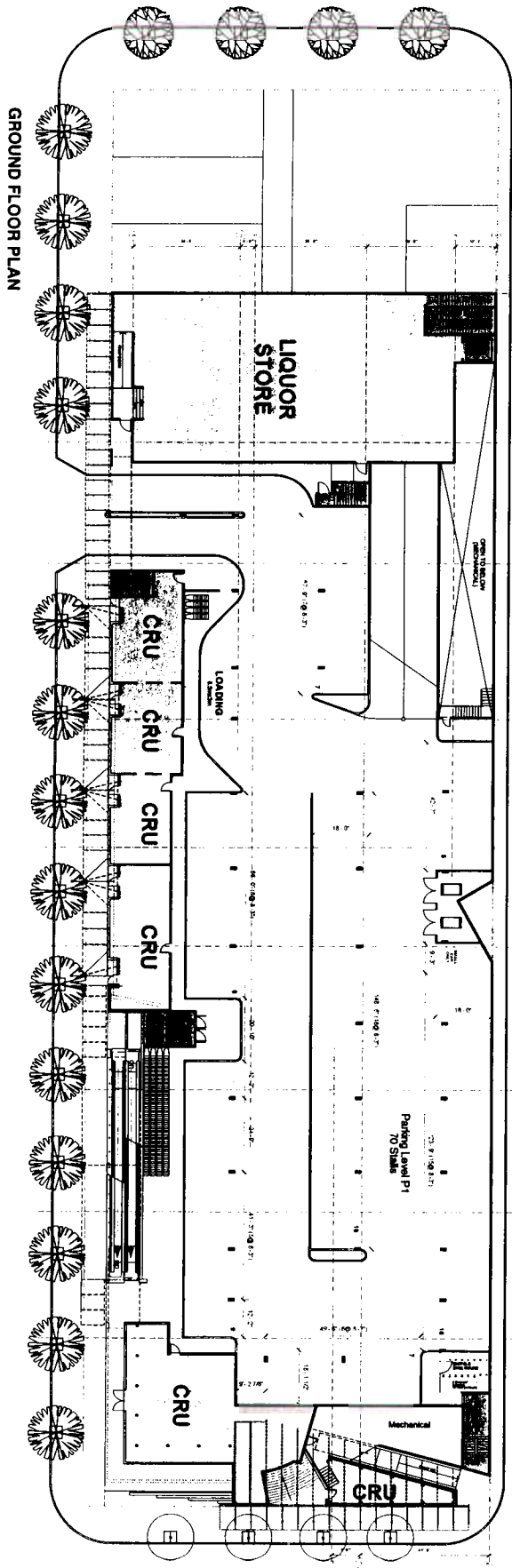
1716 ROBSON ST. DE 406086

DATE 2001 11 16
DRAWN WGKS



CITY OF VANCOUVER PLANNING DEPARTMENT

FILENAME :F:\FRM0FDEV\2001 FORM OF DEV\1714 ROBSON.DWG



DP-04

DATE: 11/11/03

**Ground Floor Plan
2nd Floor Plan**

PROJECT NUMBER: 11111111

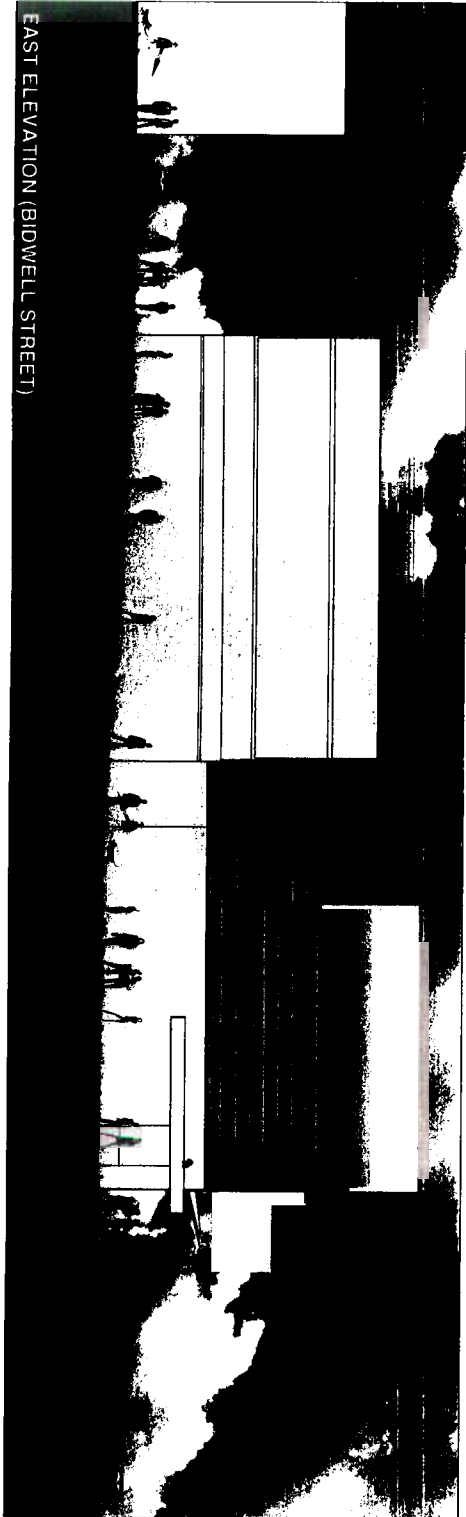
DATE: 11/11/03

SAFETY #36

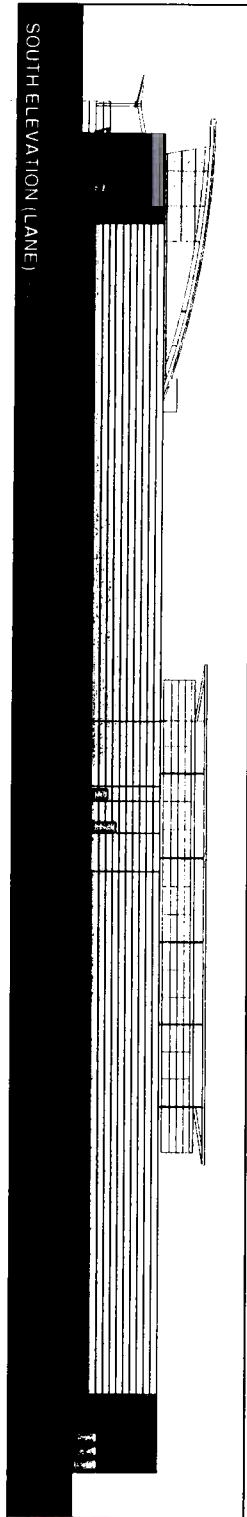


Safeway #36
Robson Street, Vancouver, B.C.

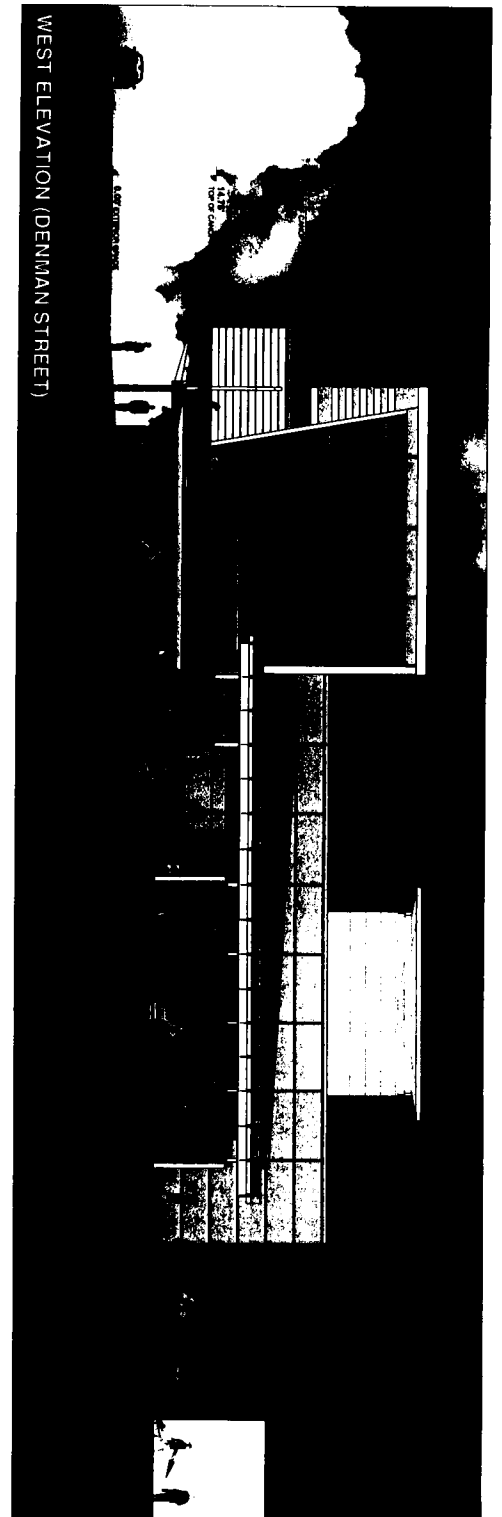




EAST ELEVATION (BIDWELL STREET)



SOUTH ELEVATION (LANE)



WEST ELEVATION (DENMAN STREET)

DP-07

DATE: 08/11/2009
 DATE: 08/11/2009

West, South & East Elevations

PROJECT NUMBER: 09-000000-0000

DATE: 08/11/2009



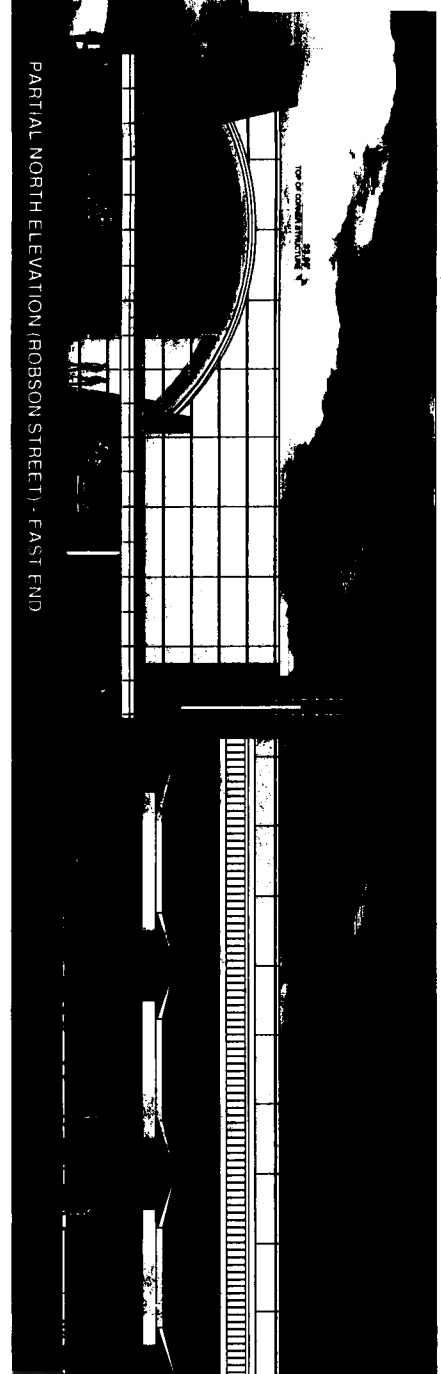
Safeway #36
 Robson Street, Vancouver, B.C.





PARTIAL NORTH ELEVATION (ROBSON STREET) - WEST END

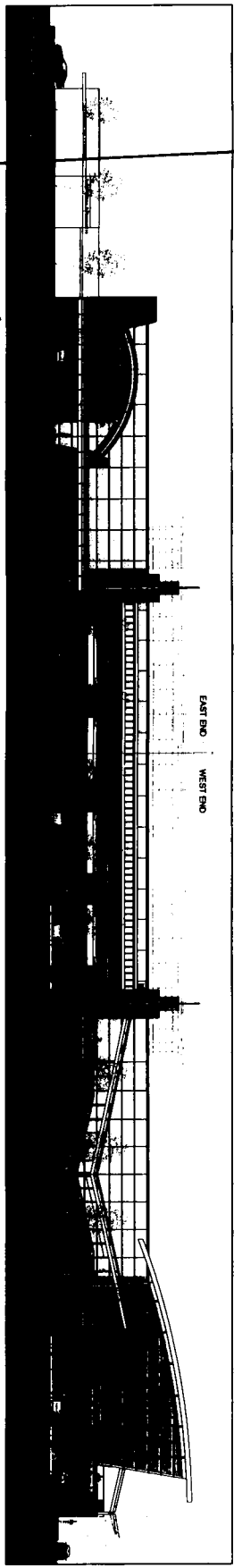
- 44.00' TOP OF ROOFLINE ENCLOSURE
- 31.31' TOP OF SIGN MOUNT
- 18.00' TOP OF CHIMNEY
- 13.00' TOP OF RETAIL ENTRY WALL
- 0.00' EXTERIOR GRADE



PARTIAL NORTH ELEVATION (ROBSON STREET) - EAST END

- 44.00' TOP OF ROOFLINE ENCLOSURE
- 31.31' TOP OF SIGN MOUNT
- 18.00' TOP OF CHIMNEY
- 13.00' TOP OF RETAIL ENTRY WALL
- 0.00' EXTERIOR GRADE

NOTE: REFER TO DP-10 FOR BUILDING COLOUR AND MATERIAL DATA



PROPOSED LIQUOR STORE



Safeway #36
Robson Street, Vancouver, B.C.



REVISIONS
 1. Additions
 2. Deletions
 3. Changes
 4. Notes

DATE: 11/11/11
 DRAWING BY: [Name]
 CHECKED BY: [Name]

North Elevation

SCALE: 1/8" = 1'-0"
 SHEET NUMBER: SK-08