

----- ZONING BOUNDARY

3588 CROWLEY DRIVE DE 405823

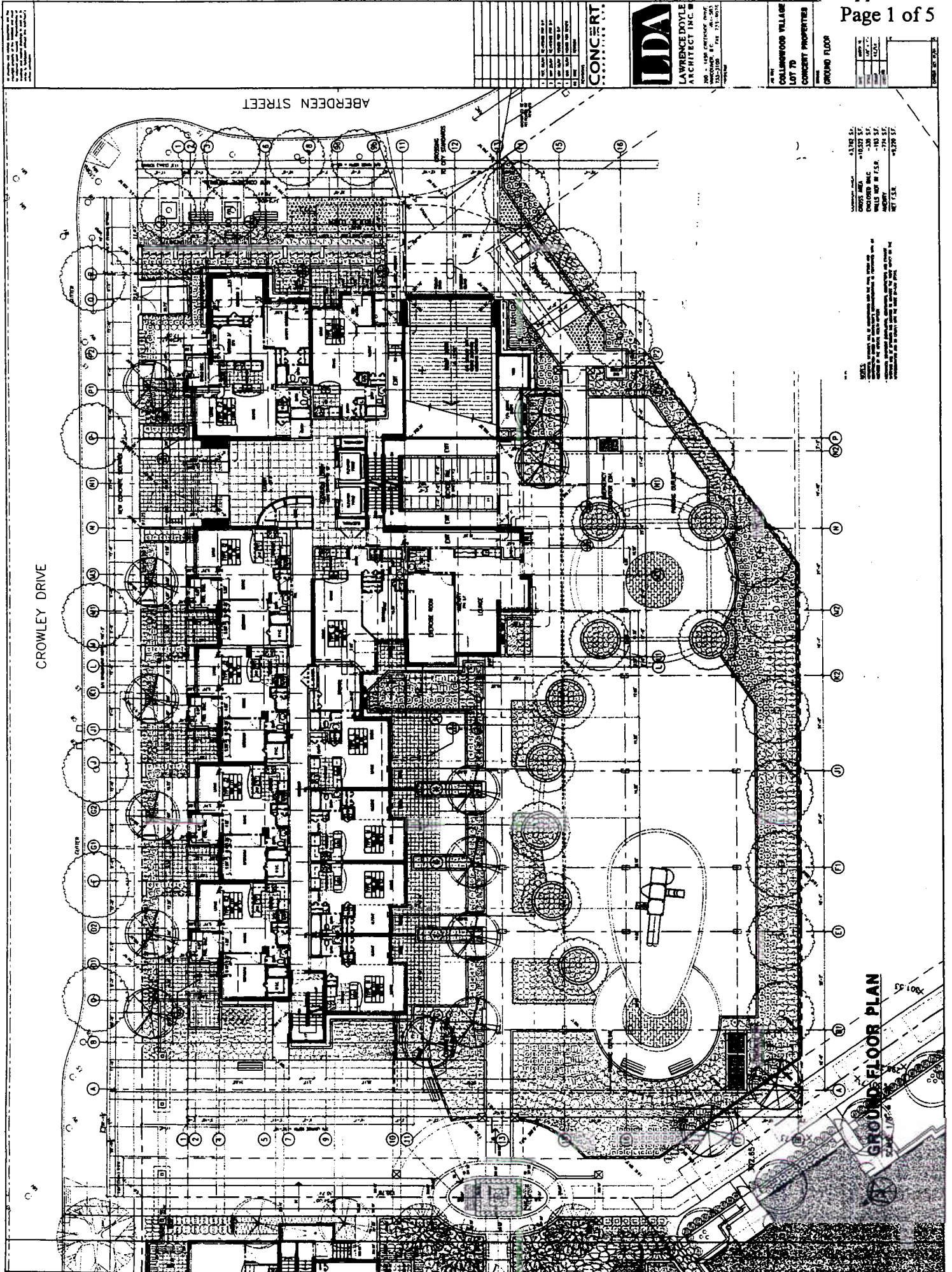
CITY OF VANCOUVER PLANNING DEPARTMENT

DATE 2001 10 10

DRAWN WGS DY



FILENAME :F:FRMOFDEV\2001 FRMOFDEV.3588 CROWLEY DRIVE.DWG



NOT TO SCALE
DATE: 10/15/01
PROJECT: COLLEENWOOD VILLAGE
LOT 70
CONCRETE PROPERTIES

| NO. | DESCRIPTION | DATE |
|-----|-------------|----------|
| 1 | REVISED | 10/15/01 |
| 2 | REVISED | 10/15/01 |
| 3 | REVISED | 10/15/01 |
| 4 | REVISED | 10/15/01 |
| 5 | REVISED | 10/15/01 |
| 6 | REVISED | 10/15/01 |
| 7 | REVISED | 10/15/01 |
| 8 | REVISED | 10/15/01 |
| 9 | REVISED | 10/15/01 |
| 10 | REVISED | 10/15/01 |
| 11 | REVISED | 10/15/01 |
| 12 | REVISED | 10/15/01 |
| 13 | REVISED | 10/15/01 |
| 14 | REVISED | 10/15/01 |
| 15 | REVISED | 10/15/01 |
| 16 | REVISED | 10/15/01 |
| 17 | REVISED | 10/15/01 |
| 18 | REVISED | 10/15/01 |
| 19 | REVISED | 10/15/01 |
| 20 | REVISED | 10/15/01 |

LDA
LAWRENCE DOYLE
ARCHITECT INC. ■
300 S. 15th Street, Suite 200
Wichita, KS 67202
TEL: 316.261.1111 FAX: 316.261.1112

COLLEENWOOD VILLAGE
LOT 70
CONCRETE PROPERTIES

GROUND FLOOR

| NO. | DESCRIPTION | DATE |
|-----|-------------|----------|
| 1 | REVISED | 10/15/01 |
| 2 | REVISED | 10/15/01 |
| 3 | REVISED | 10/15/01 |
| 4 | REVISED | 10/15/01 |
| 5 | REVISED | 10/15/01 |
| 6 | REVISED | 10/15/01 |
| 7 | REVISED | 10/15/01 |
| 8 | REVISED | 10/15/01 |
| 9 | REVISED | 10/15/01 |
| 10 | REVISED | 10/15/01 |
| 11 | REVISED | 10/15/01 |
| 12 | REVISED | 10/15/01 |
| 13 | REVISED | 10/15/01 |
| 14 | REVISED | 10/15/01 |
| 15 | REVISED | 10/15/01 |
| 16 | REVISED | 10/15/01 |
| 17 | REVISED | 10/15/01 |
| 18 | REVISED | 10/15/01 |
| 19 | REVISED | 10/15/01 |
| 20 | REVISED | 10/15/01 |

STATES: ILLINOIS

| DESCRIPTION | AREA |
|---------------------|------------|
| CROSS AREA | 118,527 SF |
| ENCLOSED B.M.C. | 1,338 SF |
| WALLS NOT IN F.S.P. | 113,852 SF |
| ENTRY | 1,774 SF |
| REVISIONS | 4,629 SF |

GROUND FLOOR PLAN

| | | | | | | | | | | | | | | | | | | | | | | | | | | | | | | | | | | | | | | | | | | | | | | | | | | | | | | | | | | | | | | | | | | | | | | | | | | | | | | | | | | | | | | | | | | | | | | | | | | | |
|-------|-------|-------|-------|-------|-------|-------|-------|-------|--------|--------|--------|--------|--------|--------|--------|--------|--------|--------|--------|--------|--------|--------|--------|--------|--------|--------|--------|--------|--------|--------|--------|--------|--------|--------|--------|--------|--------|--------|--------|--------|--------|--------|--------|--------|--------|--------|--------|--------|--------|--------|--------|--------|--------|--------|--------|--------|--------|--------|--------|--------|--------|--------|--------|--------|--------|--------|--------|--------|--------|--------|--------|--------|--------|--------|--------|--------|--------|--------|--------|--------|--------|--------|--------|--------|--------|--------|--------|--------|--------|--------|--------|--------|--------|--------|--------|--------|--------|--------|---------|
| NO. 1 | NO. 2 | NO. 3 | NO. 4 | NO. 5 | NO. 6 | NO. 7 | NO. 8 | NO. 9 | NO. 10 | NO. 11 | NO. 12 | NO. 13 | NO. 14 | NO. 15 | NO. 16 | NO. 17 | NO. 18 | NO. 19 | NO. 20 | NO. 21 | NO. 22 | NO. 23 | NO. 24 | NO. 25 | NO. 26 | NO. 27 | NO. 28 | NO. 29 | NO. 30 | NO. 31 | NO. 32 | NO. 33 | NO. 34 | NO. 35 | NO. 36 | NO. 37 | NO. 38 | NO. 39 | NO. 40 | NO. 41 | NO. 42 | NO. 43 | NO. 44 | NO. 45 | NO. 46 | NO. 47 | NO. 48 | NO. 49 | NO. 50 | NO. 51 | NO. 52 | NO. 53 | NO. 54 | NO. 55 | NO. 56 | NO. 57 | NO. 58 | NO. 59 | NO. 60 | NO. 61 | NO. 62 | NO. 63 | NO. 64 | NO. 65 | NO. 66 | NO. 67 | NO. 68 | NO. 69 | NO. 70 | NO. 71 | NO. 72 | NO. 73 | NO. 74 | NO. 75 | NO. 76 | NO. 77 | NO. 78 | NO. 79 | NO. 80 | NO. 81 | NO. 82 | NO. 83 | NO. 84 | NO. 85 | NO. 86 | NO. 87 | NO. 88 | NO. 89 | NO. 90 | NO. 91 | NO. 92 | NO. 93 | NO. 94 | NO. 95 | NO. 96 | NO. 97 | NO. 98 | NO. 99 | NO. 100 |
|-------|-------|-------|-------|-------|-------|-------|-------|-------|--------|--------|--------|--------|--------|--------|--------|--------|--------|--------|--------|--------|--------|--------|--------|--------|--------|--------|--------|--------|--------|--------|--------|--------|--------|--------|--------|--------|--------|--------|--------|--------|--------|--------|--------|--------|--------|--------|--------|--------|--------|--------|--------|--------|--------|--------|--------|--------|--------|--------|--------|--------|--------|--------|--------|--------|--------|--------|--------|--------|--------|--------|--------|--------|--------|--------|--------|--------|--------|--------|--------|--------|--------|--------|--------|--------|--------|--------|--------|--------|--------|--------|--------|--------|--------|--------|--------|--------|--------|--------|---------|

CONCERT PROPERTIES, LLC

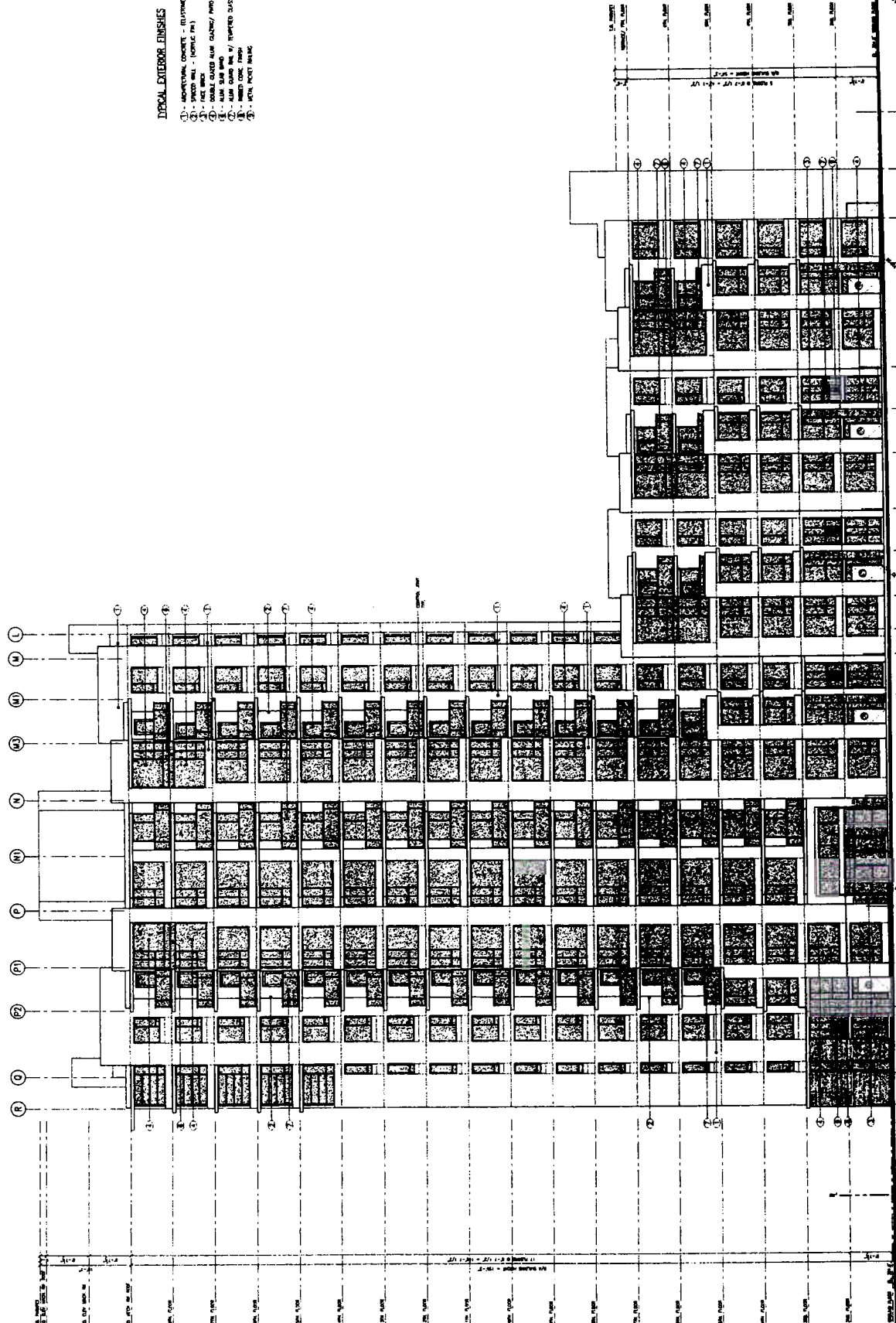


LAWRENCE DOYLE ARCHITECT INC.
300 - 1400 CRENSHAW DRIVE
WILMINGTON, DE 19804
302.438.1234
WWW.LDA-ARCHITECT.COM

COLLINGSWOOD VILLAGE
LOT 70
CONCERT PROPERTIES, LLC

| | |
|-----------------|---------|
| NORTH ELEVATION | |
| NO. 1 | NO. 2 |
| NO. 3 | NO. 4 |
| NO. 5 | NO. 6 |
| NO. 7 | NO. 8 |
| NO. 9 | NO. 10 |
| NO. 11 | NO. 12 |
| NO. 13 | NO. 14 |
| NO. 15 | NO. 16 |
| NO. 17 | NO. 18 |
| NO. 19 | NO. 20 |
| NO. 21 | NO. 22 |
| NO. 23 | NO. 24 |
| NO. 25 | NO. 26 |
| NO. 27 | NO. 28 |
| NO. 29 | NO. 30 |
| NO. 31 | NO. 32 |
| NO. 33 | NO. 34 |
| NO. 35 | NO. 36 |
| NO. 37 | NO. 38 |
| NO. 39 | NO. 40 |
| NO. 41 | NO. 42 |
| NO. 43 | NO. 44 |
| NO. 45 | NO. 46 |
| NO. 47 | NO. 48 |
| NO. 49 | NO. 50 |
| NO. 51 | NO. 52 |
| NO. 53 | NO. 54 |
| NO. 55 | NO. 56 |
| NO. 57 | NO. 58 |
| NO. 59 | NO. 60 |
| NO. 61 | NO. 62 |
| NO. 63 | NO. 64 |
| NO. 65 | NO. 66 |
| NO. 67 | NO. 68 |
| NO. 69 | NO. 70 |
| NO. 71 | NO. 72 |
| NO. 73 | NO. 74 |
| NO. 75 | NO. 76 |
| NO. 77 | NO. 78 |
| NO. 79 | NO. 80 |
| NO. 81 | NO. 82 |
| NO. 83 | NO. 84 |
| NO. 85 | NO. 86 |
| NO. 87 | NO. 88 |
| NO. 89 | NO. 90 |
| NO. 91 | NO. 92 |
| NO. 93 | NO. 94 |
| NO. 95 | NO. 96 |
| NO. 97 | NO. 98 |
| NO. 99 | NO. 100 |

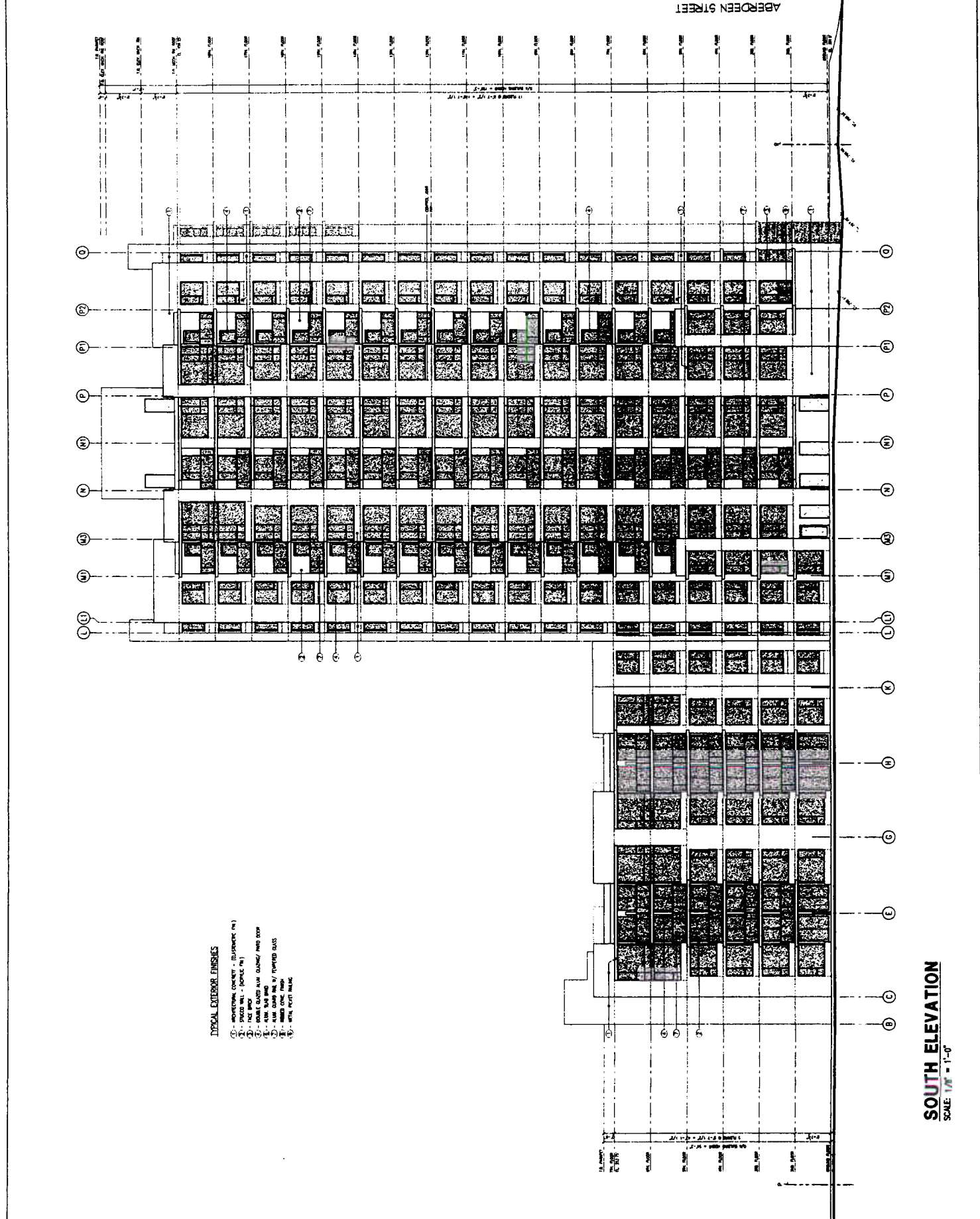
- TYPICAL EXTERIOR FINISHES**
- 1. ARCHITECTURAL CONCRETE - (ELEVATION FIN.)
 - 2. STAINED BRICK - (ELEVATION FIN.)
 - 3. BRICK - (ELEVATION FIN.)
 - 4. BRICK - (ELEVATION FIN.)
 - 5. BRICK - (ELEVATION FIN.)
 - 6. BRICK - (ELEVATION FIN.)
 - 7. BRICK - (ELEVATION FIN.)
 - 8. BRICK - (ELEVATION FIN.)
 - 9. BRICK - (ELEVATION FIN.)
 - 10. BRICK - (ELEVATION FIN.)
 - 11. BRICK - (ELEVATION FIN.)
 - 12. BRICK - (ELEVATION FIN.)
 - 13. BRICK - (ELEVATION FIN.)
 - 14. BRICK - (ELEVATION FIN.)
 - 15. BRICK - (ELEVATION FIN.)
 - 16. BRICK - (ELEVATION FIN.)
 - 17. BRICK - (ELEVATION FIN.)
 - 18. BRICK - (ELEVATION FIN.)
 - 19. BRICK - (ELEVATION FIN.)
 - 20. BRICK - (ELEVATION FIN.)
 - 21. BRICK - (ELEVATION FIN.)
 - 22. BRICK - (ELEVATION FIN.)
 - 23. BRICK - (ELEVATION FIN.)
 - 24. BRICK - (ELEVATION FIN.)
 - 25. BRICK - (ELEVATION FIN.)
 - 26. BRICK - (ELEVATION FIN.)
 - 27. BRICK - (ELEVATION FIN.)
 - 28. BRICK - (ELEVATION FIN.)
 - 29. BRICK - (ELEVATION FIN.)
 - 30. BRICK - (ELEVATION FIN.)
 - 31. BRICK - (ELEVATION FIN.)
 - 32. BRICK - (ELEVATION FIN.)
 - 33. BRICK - (ELEVATION FIN.)
 - 34. BRICK - (ELEVATION FIN.)
 - 35. BRICK - (ELEVATION FIN.)
 - 36. BRICK - (ELEVATION FIN.)
 - 37. BRICK - (ELEVATION FIN.)
 - 38. BRICK - (ELEVATION FIN.)
 - 39. BRICK - (ELEVATION FIN.)
 - 40. BRICK - (ELEVATION FIN.)
 - 41. BRICK - (ELEVATION FIN.)
 - 42. BRICK - (ELEVATION FIN.)
 - 43. BRICK - (ELEVATION FIN.)
 - 44. BRICK - (ELEVATION FIN.)
 - 45. BRICK - (ELEVATION FIN.)
 - 46. BRICK - (ELEVATION FIN.)
 - 47. BRICK - (ELEVATION FIN.)
 - 48. BRICK - (ELEVATION FIN.)
 - 49. BRICK - (ELEVATION FIN.)
 - 50. BRICK - (ELEVATION FIN.)
 - 51. BRICK - (ELEVATION FIN.)
 - 52. BRICK - (ELEVATION FIN.)
 - 53. BRICK - (ELEVATION FIN.)
 - 54. BRICK - (ELEVATION FIN.)
 - 55. BRICK - (ELEVATION FIN.)
 - 56. BRICK - (ELEVATION FIN.)
 - 57. BRICK - (ELEVATION FIN.)
 - 58. BRICK - (ELEVATION FIN.)
 - 59. BRICK - (ELEVATION FIN.)
 - 60. BRICK - (ELEVATION FIN.)
 - 61. BRICK - (ELEVATION FIN.)
 - 62. BRICK - (ELEVATION FIN.)
 - 63. BRICK - (ELEVATION FIN.)
 - 64. BRICK - (ELEVATION FIN.)
 - 65. BRICK - (ELEVATION FIN.)
 - 66. BRICK - (ELEVATION FIN.)
 - 67. BRICK - (ELEVATION FIN.)
 - 68. BRICK - (ELEVATION FIN.)
 - 69. BRICK - (ELEVATION FIN.)
 - 70. BRICK - (ELEVATION FIN.)
 - 71. BRICK - (ELEVATION FIN.)
 - 72. BRICK - (ELEVATION FIN.)
 - 73. BRICK - (ELEVATION FIN.)
 - 74. BRICK - (ELEVATION FIN.)
 - 75. BRICK - (ELEVATION FIN.)
 - 76. BRICK - (ELEVATION FIN.)
 - 77. BRICK - (ELEVATION FIN.)
 - 78. BRICK - (ELEVATION FIN.)
 - 79. BRICK - (ELEVATION FIN.)
 - 80. BRICK - (ELEVATION FIN.)
 - 81. BRICK - (ELEVATION FIN.)
 - 82. BRICK - (ELEVATION FIN.)
 - 83. BRICK - (ELEVATION FIN.)
 - 84. BRICK - (ELEVATION FIN.)
 - 85. BRICK - (ELEVATION FIN.)
 - 86. BRICK - (ELEVATION FIN.)
 - 87. BRICK - (ELEVATION FIN.)
 - 88. BRICK - (ELEVATION FIN.)
 - 89. BRICK - (ELEVATION FIN.)
 - 90. BRICK - (ELEVATION FIN.)
 - 91. BRICK - (ELEVATION FIN.)
 - 92. BRICK - (ELEVATION FIN.)
 - 93. BRICK - (ELEVATION FIN.)
 - 94. BRICK - (ELEVATION FIN.)
 - 95. BRICK - (ELEVATION FIN.)
 - 96. BRICK - (ELEVATION FIN.)
 - 97. BRICK - (ELEVATION FIN.)
 - 98. BRICK - (ELEVATION FIN.)
 - 99. BRICK - (ELEVATION FIN.)
 - 100. BRICK - (ELEVATION FIN.)



NORTH ELEVATION
SCALE: 1/8" = 1'-0"

| | | | |
|--------------------|---------------|--|--|
| CONCERT PROPERTIES | | <p>LDA LAWRENCE DOYLE ARCHITECT INC. 100 - 1100 CHESTER, SUITE 100 WINDSOR, B.C. V8Y 1S1 TEL: 250-261-1111 WWW.LDA-ARCHITECT.COM</p> | <p>PROJECT: COLLINGSWOOD VILLAGE LOT 7D CONCERT PROPERTIES</p> |
| 1. EX. FINISH | 2. EX. FINISH | | |

1. EX. FINISH
2. EX. FINISH
3. EX. FINISH
4. EX. FINISH
5. EX. FINISH
6. EX. FINISH
7. EX. FINISH
8. EX. FINISH
9. EX. FINISH
10. EX. FINISH
11. EX. FINISH
12. EX. FINISH
13. EX. FINISH
14. EX. FINISH
15. EX. FINISH
16. EX. FINISH
17. EX. FINISH
18. EX. FINISH
19. EX. FINISH
20. EX. FINISH
21. EX. FINISH
22. EX. FINISH
23. EX. FINISH
24. EX. FINISH
25. EX. FINISH
26. EX. FINISH
27. EX. FINISH
28. EX. FINISH
29. EX. FINISH
30. EX. FINISH
31. EX. FINISH
32. EX. FINISH
33. EX. FINISH
34. EX. FINISH
35. EX. FINISH
36. EX. FINISH
37. EX. FINISH
38. EX. FINISH
39. EX. FINISH
40. EX. FINISH
41. EX. FINISH
42. EX. FINISH
43. EX. FINISH
44. EX. FINISH
45. EX. FINISH
46. EX. FINISH
47. EX. FINISH
48. EX. FINISH
49. EX. FINISH
50. EX. FINISH
51. EX. FINISH
52. EX. FINISH
53. EX. FINISH
54. EX. FINISH
55. EX. FINISH
56. EX. FINISH
57. EX. FINISH
58. EX. FINISH
59. EX. FINISH
60. EX. FINISH
61. EX. FINISH
62. EX. FINISH
63. EX. FINISH
64. EX. FINISH
65. EX. FINISH
66. EX. FINISH
67. EX. FINISH
68. EX. FINISH
69. EX. FINISH
70. EX. FINISH
71. EX. FINISH
72. EX. FINISH
73. EX. FINISH
74. EX. FINISH
75. EX. FINISH
76. EX. FINISH
77. EX. FINISH
78. EX. FINISH
79. EX. FINISH
80. EX. FINISH
81. EX. FINISH
82. EX. FINISH
83. EX. FINISH
84. EX. FINISH
85. EX. FINISH
86. EX. FINISH
87. EX. FINISH
88. EX. FINISH
89. EX. FINISH
90. EX. FINISH
91. EX. FINISH
92. EX. FINISH
93. EX. FINISH
94. EX. FINISH
95. EX. FINISH
96. EX. FINISH
97. EX. FINISH
98. EX. FINISH
99. EX. FINISH
100. EX. FINISH



- TYPICAL EXTERIOR FINISHES**
- 1. MOVINGWALL CONCRETE - (GLAZEMENT FIN.)
 - 2. STUCCO W/LL - (CONCRETE FIN.)
 - 3. STUCCO W/LL - (CONCRETE FIN.)
 - 4. STUCCO W/LL - (CONCRETE FIN.)
 - 5. STUCCO W/LL - (CONCRETE FIN.)
 - 6. STUCCO W/LL - (CONCRETE FIN.)
 - 7. STUCCO W/LL - (CONCRETE FIN.)
 - 8. STUCCO W/LL - (CONCRETE FIN.)
 - 9. STUCCO W/LL - (CONCRETE FIN.)
 - 10. STUCCO W/LL - (CONCRETE FIN.)
 - 11. STUCCO W/LL - (CONCRETE FIN.)
 - 12. STUCCO W/LL - (CONCRETE FIN.)
 - 13. STUCCO W/LL - (CONCRETE FIN.)
 - 14. STUCCO W/LL - (CONCRETE FIN.)
 - 15. STUCCO W/LL - (CONCRETE FIN.)
 - 16. STUCCO W/LL - (CONCRETE FIN.)
 - 17. STUCCO W/LL - (CONCRETE FIN.)
 - 18. STUCCO W/LL - (CONCRETE FIN.)
 - 19. STUCCO W/LL - (CONCRETE FIN.)
 - 20. STUCCO W/LL - (CONCRETE FIN.)
 - 21. STUCCO W/LL - (CONCRETE FIN.)
 - 22. STUCCO W/LL - (CONCRETE FIN.)
 - 23. STUCCO W/LL - (CONCRETE FIN.)
 - 24. STUCCO W/LL - (CONCRETE FIN.)
 - 25. STUCCO W/LL - (CONCRETE FIN.)
 - 26. STUCCO W/LL - (CONCRETE FIN.)
 - 27. STUCCO W/LL - (CONCRETE FIN.)
 - 28. STUCCO W/LL - (CONCRETE FIN.)
 - 29. STUCCO W/LL - (CONCRETE FIN.)
 - 30. STUCCO W/LL - (CONCRETE FIN.)
 - 31. STUCCO W/LL - (CONCRETE FIN.)
 - 32. STUCCO W/LL - (CONCRETE FIN.)
 - 33. STUCCO W/LL - (CONCRETE FIN.)
 - 34. STUCCO W/LL - (CONCRETE FIN.)
 - 35. STUCCO W/LL - (CONCRETE FIN.)
 - 36. STUCCO W/LL - (CONCRETE FIN.)
 - 37. STUCCO W/LL - (CONCRETE FIN.)
 - 38. STUCCO W/LL - (CONCRETE FIN.)
 - 39. STUCCO W/LL - (CONCRETE FIN.)
 - 40. STUCCO W/LL - (CONCRETE FIN.)
 - 41. STUCCO W/LL - (CONCRETE FIN.)
 - 42. STUCCO W/LL - (CONCRETE FIN.)
 - 43. STUCCO W/LL - (CONCRETE FIN.)
 - 44. STUCCO W/LL - (CONCRETE FIN.)
 - 45. STUCCO W/LL - (CONCRETE FIN.)
 - 46. STUCCO W/LL - (CONCRETE FIN.)
 - 47. STUCCO W/LL - (CONCRETE FIN.)
 - 48. STUCCO W/LL - (CONCRETE FIN.)
 - 49. STUCCO W/LL - (CONCRETE FIN.)
 - 50. STUCCO W/LL - (CONCRETE FIN.)
 - 51. STUCCO W/LL - (CONCRETE FIN.)
 - 52. STUCCO W/LL - (CONCRETE FIN.)
 - 53. STUCCO W/LL - (CONCRETE FIN.)
 - 54. STUCCO W/LL - (CONCRETE FIN.)
 - 55. STUCCO W/LL - (CONCRETE FIN.)
 - 56. STUCCO W/LL - (CONCRETE FIN.)
 - 57. STUCCO W/LL - (CONCRETE FIN.)
 - 58. STUCCO W/LL - (CONCRETE FIN.)
 - 59. STUCCO W/LL - (CONCRETE FIN.)
 - 60. STUCCO W/LL - (CONCRETE FIN.)
 - 61. STUCCO W/LL - (CONCRETE FIN.)
 - 62. STUCCO W/LL - (CONCRETE FIN.)
 - 63. STUCCO W/LL - (CONCRETE FIN.)
 - 64. STUCCO W/LL - (CONCRETE FIN.)
 - 65. STUCCO W/LL - (CONCRETE FIN.)
 - 66. STUCCO W/LL - (CONCRETE FIN.)
 - 67. STUCCO W/LL - (CONCRETE FIN.)
 - 68. STUCCO W/LL - (CONCRETE FIN.)
 - 69. STUCCO W/LL - (CONCRETE FIN.)
 - 70. STUCCO W/LL - (CONCRETE FIN.)
 - 71. STUCCO W/LL - (CONCRETE FIN.)
 - 72. STUCCO W/LL - (CONCRETE FIN.)
 - 73. STUCCO W/LL - (CONCRETE FIN.)
 - 74. STUCCO W/LL - (CONCRETE FIN.)
 - 75. STUCCO W/LL - (CONCRETE FIN.)
 - 76. STUCCO W/LL - (CONCRETE FIN.)
 - 77. STUCCO W/LL - (CONCRETE FIN.)
 - 78. STUCCO W/LL - (CONCRETE FIN.)
 - 79. STUCCO W/LL - (CONCRETE FIN.)
 - 80. STUCCO W/LL - (CONCRETE FIN.)
 - 81. STUCCO W/LL - (CONCRETE FIN.)
 - 82. STUCCO W/LL - (CONCRETE FIN.)
 - 83. STUCCO W/LL - (CONCRETE FIN.)
 - 84. STUCCO W/LL - (CONCRETE FIN.)
 - 85. STUCCO W/LL - (CONCRETE FIN.)
 - 86. STUCCO W/LL - (CONCRETE FIN.)
 - 87. STUCCO W/LL - (CONCRETE FIN.)
 - 88. STUCCO W/LL - (CONCRETE FIN.)
 - 89. STUCCO W/LL - (CONCRETE FIN.)
 - 90. STUCCO W/LL - (CONCRETE FIN.)
 - 91. STUCCO W/LL - (CONCRETE FIN.)
 - 92. STUCCO W/LL - (CONCRETE FIN.)
 - 93. STUCCO W/LL - (CONCRETE FIN.)
 - 94. STUCCO W/LL - (CONCRETE FIN.)
 - 95. STUCCO W/LL - (CONCRETE FIN.)
 - 96. STUCCO W/LL - (CONCRETE FIN.)
 - 97. STUCCO W/LL - (CONCRETE FIN.)
 - 98. STUCCO W/LL - (CONCRETE FIN.)
 - 99. STUCCO W/LL - (CONCRETE FIN.)
 - 100. STUCCO W/LL - (CONCRETE FIN.)

SOUTH ELEVATION
SCALE: 1/8" = 1'-0"

NOT TO SCALE
 ALL DIMENSIONS ARE TO FACE UNLESS NOTED OTHERWISE
 ALL FINISHES ARE TO BE AS SHOWN UNLESS NOTED OTHERWISE
 ALL MATERIALS ARE TO BE AS SHOWN UNLESS NOTED OTHERWISE
 ALL WORK IS TO BE IN ACCORDANCE WITH THE LATEST EDITIONS OF THE BUILDING CODES AND SPECIFICATIONS THEREOF
 ALL WORK IS TO BE IN ACCORDANCE WITH THE LATEST EDITIONS OF THE BUILDING CODES AND SPECIFICATIONS THEREOF

| | | |
|----|--------------------|--------------------|
| 1 | 1/2" CONC. ON FORM | 1/2" CONC. ON FORM |
| 2 | 1/2" CONC. ON FORM | 1/2" CONC. ON FORM |
| 3 | 1/2" CONC. ON FORM | 1/2" CONC. ON FORM |
| 4 | 1/2" CONC. ON FORM | 1/2" CONC. ON FORM |
| 5 | 1/2" CONC. ON FORM | 1/2" CONC. ON FORM |
| 6 | 1/2" CONC. ON FORM | 1/2" CONC. ON FORM |
| 7 | 1/2" CONC. ON FORM | 1/2" CONC. ON FORM |
| 8 | 1/2" CONC. ON FORM | 1/2" CONC. ON FORM |
| 9 | 1/2" CONC. ON FORM | 1/2" CONC. ON FORM |
| 10 | 1/2" CONC. ON FORM | 1/2" CONC. ON FORM |
| 11 | 1/2" CONC. ON FORM | 1/2" CONC. ON FORM |
| 12 | 1/2" CONC. ON FORM | 1/2" CONC. ON FORM |
| 13 | 1/2" CONC. ON FORM | 1/2" CONC. ON FORM |
| 14 | 1/2" CONC. ON FORM | 1/2" CONC. ON FORM |

CONCRETE



LAWRENCE DOYLE
 ARCHITECT INC.
 200 - 1500 GREENWOOD CONC.
 WASHINGTON, D.C. 20004
 (202) 338-1100 FAX (202) 338-1100

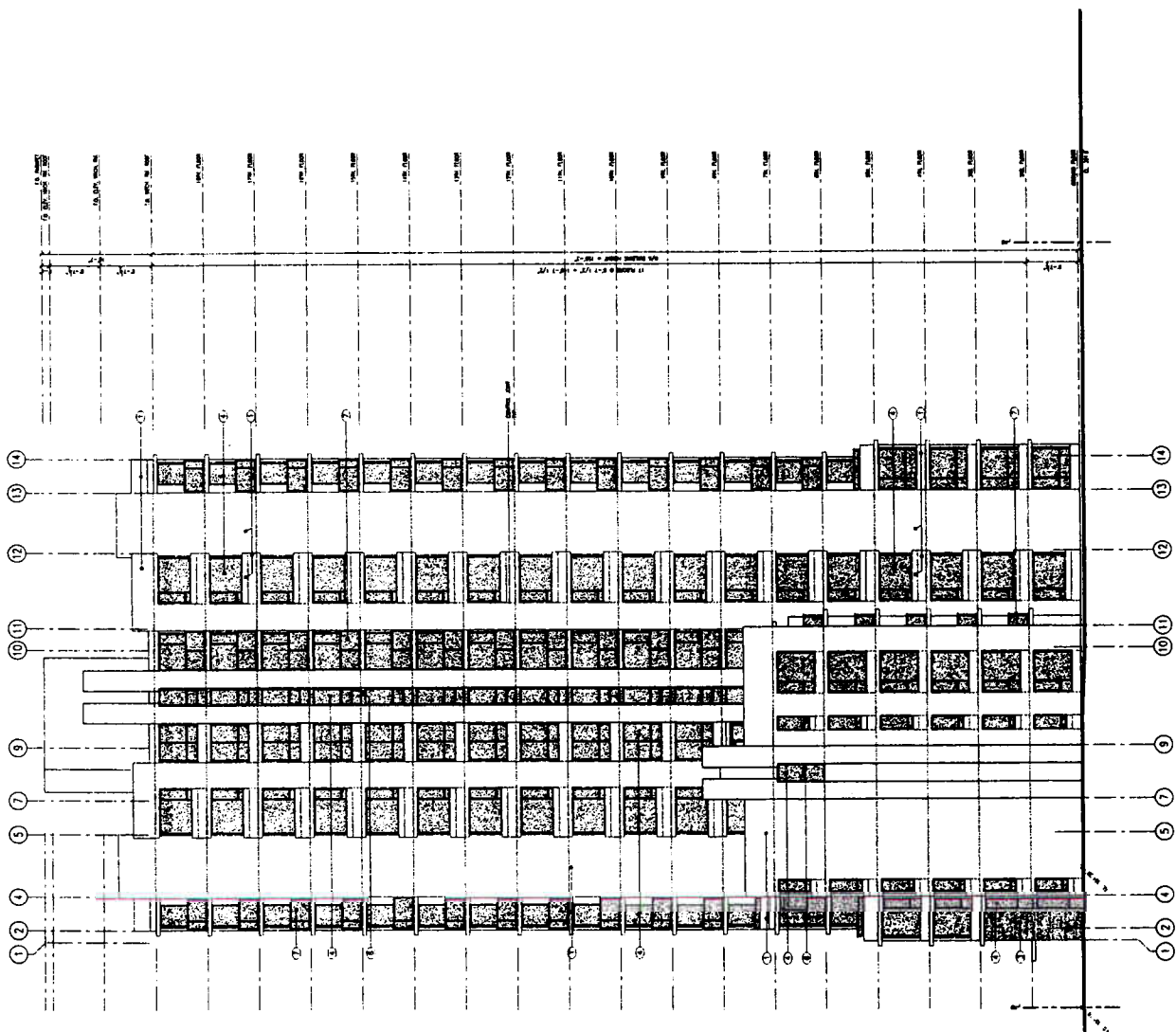
PROJECT
 COLLINGWOOD VILLAGE
 LOT 7B
 CONCERT PROPERTIES

WEST ELEV.

| | | | |
|-----|------|----|-------|
| NO. | DATE | BY | CHKD. |
| 1 | | | |
| 2 | | | |
| 3 | | | |
| 4 | | | |
| 5 | | | |
| 6 | | | |
| 7 | | | |
| 8 | | | |
| 9 | | | |
| 10 | | | |
| 11 | | | |
| 12 | | | |
| 13 | | | |
| 14 | | | |

DATE: 11/11/11
 DRAWN BY: JLD
 CHECKED BY: JLD
 PROJECT NO.: 11-001

- TYPICAL EXTERIOR FINISHES**
- 1. INTERIORS CONCRETE - (CLAYTONE) (M)
 - 2. STUCCO WALL - (FORMIC) (M)
 - 3. STUCCO WALL - (FORMIC) (M)
 - 4. STUCCO WALL - (FORMIC) (M)
 - 5. STUCCO WALL - (FORMIC) (M)
 - 6. STUCCO WALL - (FORMIC) (M)
 - 7. STUCCO WALL - (FORMIC) (M)
 - 8. STUCCO WALL - (FORMIC) (M)
 - 9. STUCCO WALL - (FORMIC) (M)
 - 10. STUCCO WALL - (FORMIC) (M)
 - 11. STUCCO WALL - (FORMIC) (M)
 - 12. STUCCO WALL - (FORMIC) (M)
 - 13. STUCCO WALL - (FORMIC) (M)
 - 14. STUCCO WALL - (FORMIC) (M)



WEST ELEVATION
 SCALE: 1/8" = 1'-0"