

--- ZONING BOUNDARY

858 BEATTY STREET DE 405676

DATE 2001 06 19

DRAWN WGKS



CITY OF VANCOUVER PLANNING DEPARTMENT

FILE:F:\FROFDEV\2001 FORM OF DEVELOPMENT\858 BEATTY.DWG

NO.	DATE	DESCRIPTION

PROJECT NO. 0004
 RUMBY + ASSOCIATES ARCHITECTS
 1000 WEST 10TH AVENUE
 VANCOUVER, BC V6H 2E6
 TEL: 604.681.1111
 FAX: 604.681.1112

DATE: 11/15/2011
 DRAWN BY: J. SMITH
 CHECKED BY: J. SMITH
 APPROVED BY: J. SMITH
 SCALE: AS SHOWN

FOR **PA**
 1850 BEATTY STREET
 OFFICE DEVELOPMENT

DATE: 11/15/2011
 DRAWN BY: J. SMITH
 CHECKED BY: J. SMITH
 APPROVED BY: J. SMITH
 SCALE: AS SHOWN

REVISIONS:
 NO. DATE DESCRIPTION
 1 11/15/2011 ISSUED FOR PERMIT
 2 11/15/2011 REVISIONS

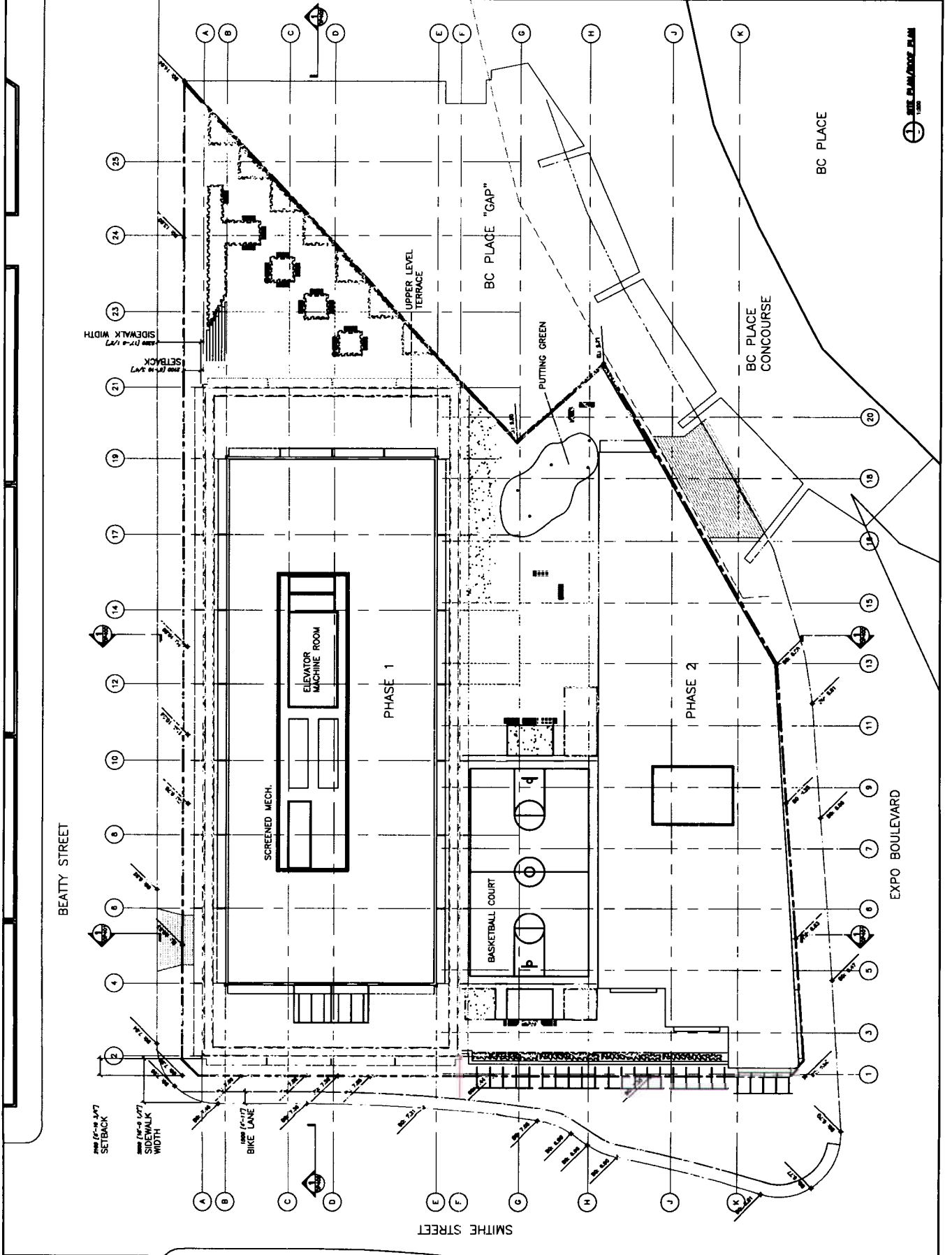
PROJECT NO. 0004
 RUMBY + ASSOCIATES ARCHITECTS
 1000 WEST 10TH AVENUE
 VANCOUVER, BC V6H 2E6
 TEL: 604.681.1111
 FAX: 604.681.1112

DATE: 11/15/2011
 DRAWN BY: J. SMITH
 CHECKED BY: J. SMITH
 APPROVED BY: J. SMITH
 SCALE: AS SHOWN

FOR **PA**
 1850 BEATTY STREET
 OFFICE DEVELOPMENT

DATE: 11/15/2011
 DRAWN BY: J. SMITH
 CHECKED BY: J. SMITH
 APPROVED BY: J. SMITH
 SCALE: AS SHOWN

REVISIONS:
 NO. DATE DESCRIPTION
 1 11/15/2011 ISSUED FOR PERMIT
 2 11/15/2011 REVISIONS



EXPO BOULEVARD

BEATTY STREET

SMITHE STREET

FROM (10-0-0 LVT) SETBACK
 FROM (10-0-0 LVT) SIDEWALK WIDTH
 FROM (10-0-17) BIKE LANE

FROM (10-0-17) BIKE LANE
 FROM (10-0-17) SETBACK
 FROM (10-0-17) SIDEWALK WIDTH

PHASE 1

PHASE 2

SCREENED MECH.

ELEVATOR MACHINE ROOM

BASKETBALL COURT

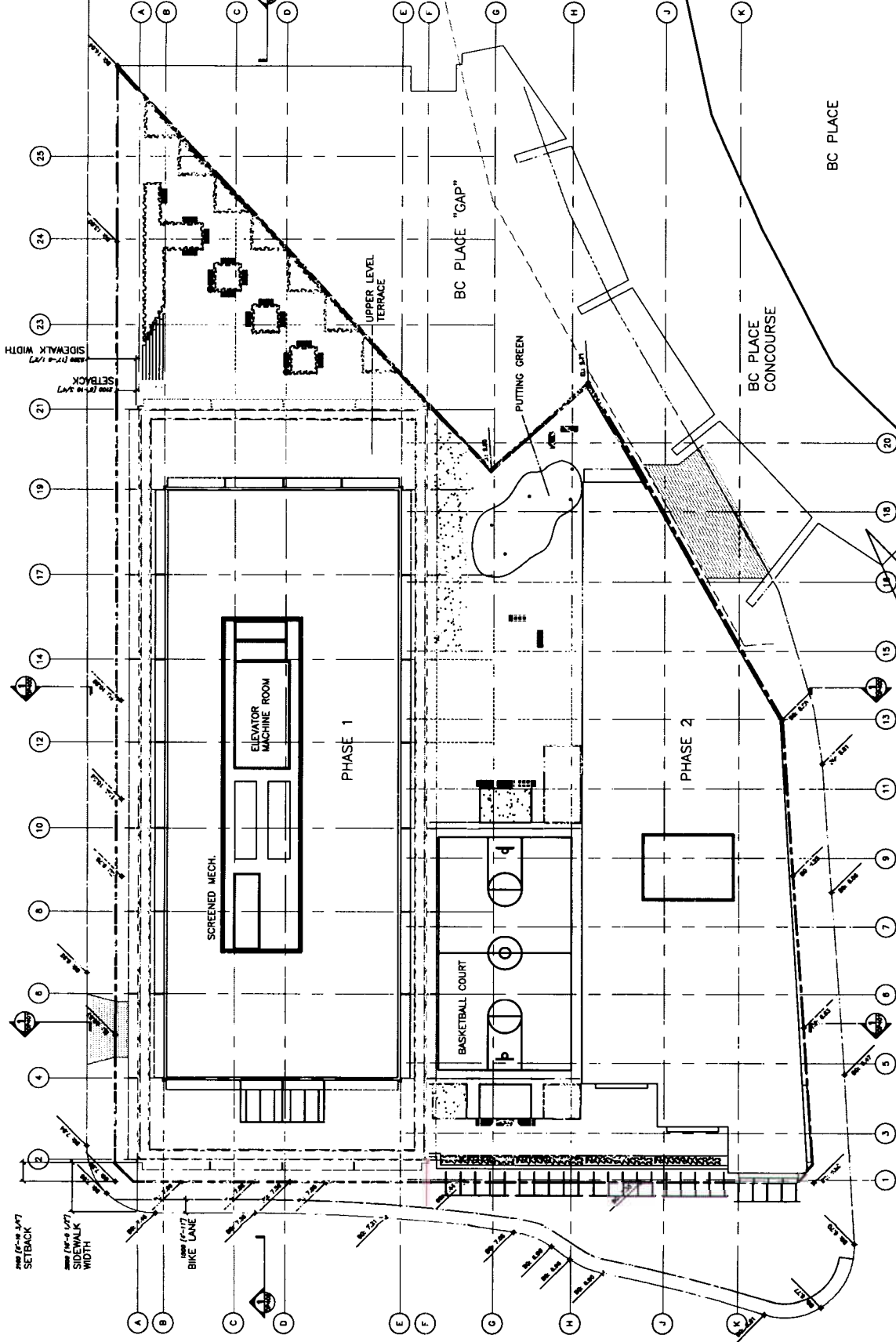
UPPER LEVEL TERRACE

PUTTING GREEN

BC PLACE "GAP"

BC PLACE CONCOURSE

BC PLACE



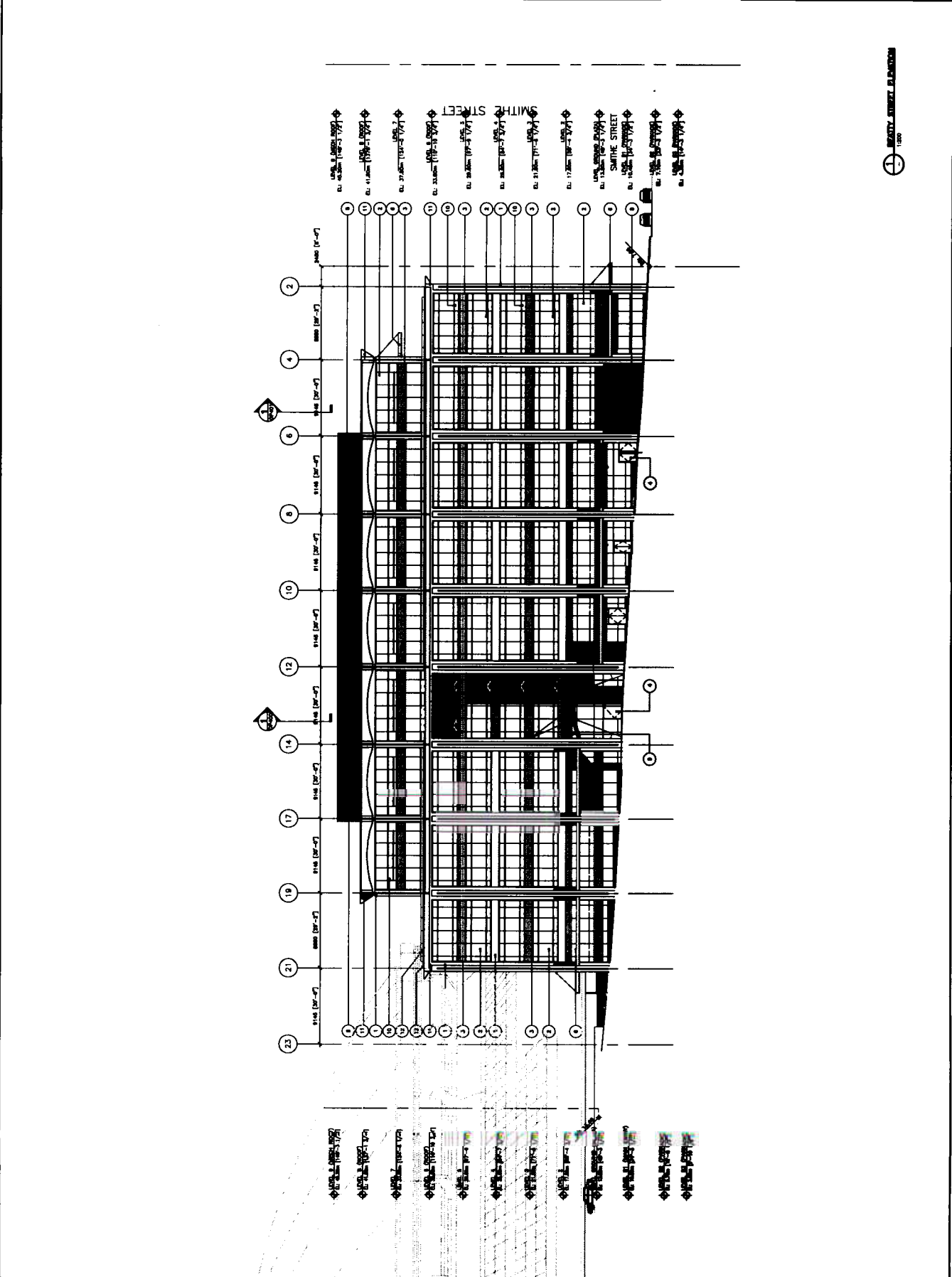
NO.	REVISION	DATE
1	ISSUED FOR DEVELOPMENT PERMIT	08/11/2010

- MATERIALS LEGEND:**
1. SANDCASTED GLAZED CONCRETE
 2. ALUMINUM GLAZING SYSTEM
 3. GLAZED SPANDREL PANEL
 4. EXTERIOR FINISH: BRICK SCREEN
 5. MECHANICAL BRICK SCREEN
 6. METAL AND GLASS CANOPY
 7. PUBLIC ART COMPONENT
 8. METAL CANOPY
 9. METAL, WOOD AND GLASS CANOPY
 10. OPERABLE WINDOWS
 11. SANDCASTED GLAZED CONCRETE COLOR
 12. SANDCASTED GLAZED CONCRETE COLOR
 13. PRECAST CONCRETE PLANTER

PROJECT NO. 0004
BEAUMY + ASSOCIATES ARCHITECTS
 1000 WEST 10TH AVENUE
 SUITE 200
 DENVER, CO 80202

FOR **FOR**
 PROJECT NO. 658 BEAUTY STREET
 OFFICE DEVELOPMENT
 BEAUTY STREET

SCALE: 1/8"=1'-0"
DATE: 08/11/2010
DESIGNER: [Name]
CHECKED: [Name]
DATE: 08/11/2010



658 BEAUTY STREET ELEVATION
 1/8"=1'-0"

NO.	REVISIONS	DATE	BY	CHECKED
1	ISSUED FOR DEVELOPMENT PERMIT			

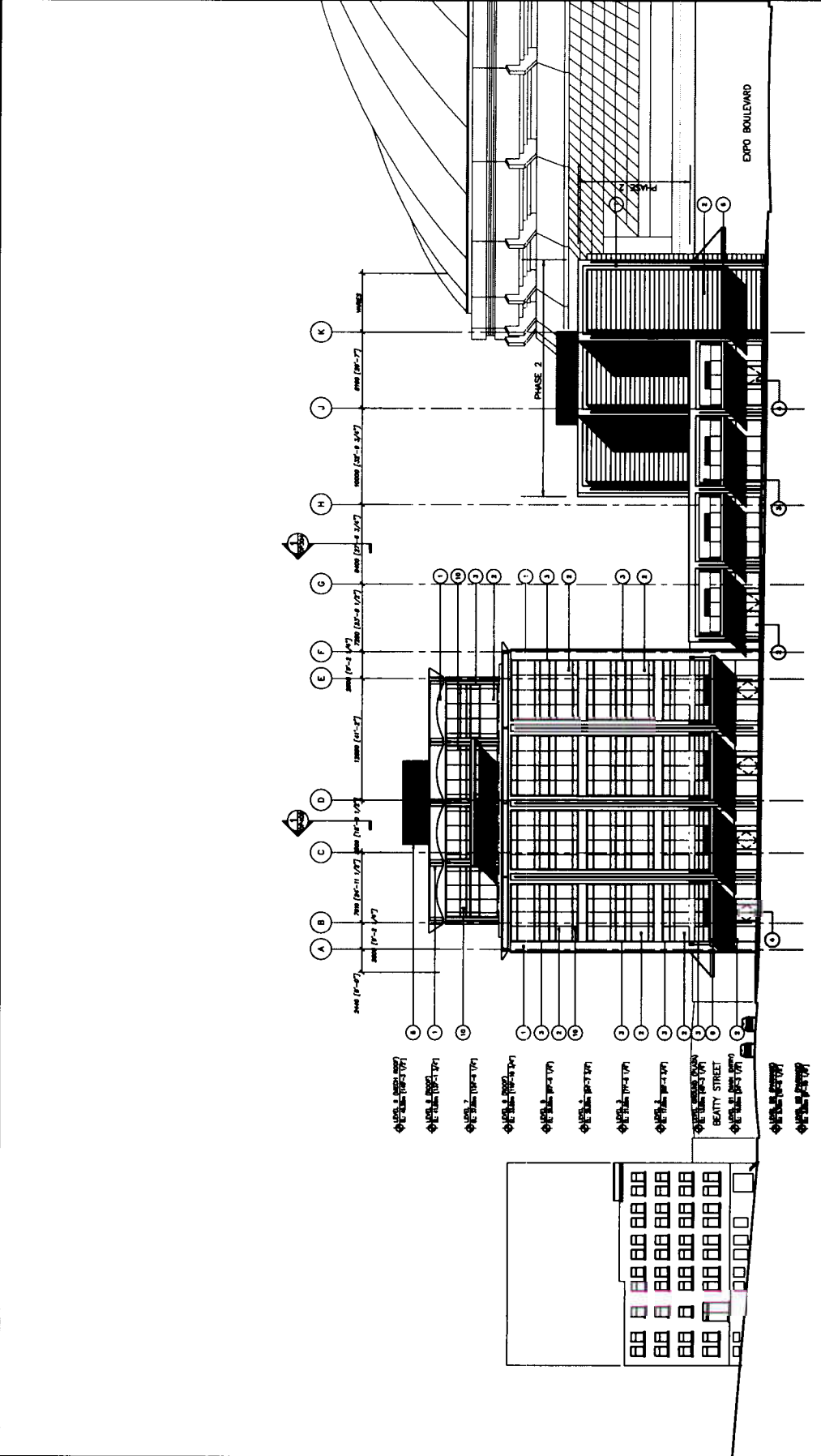
- MATERIALS LEGEND:**
1. SANDBLASTED COLORED CONCRETE
 2. ALUMINUM GLAZING SYSTEM
 3. GLAZED SPANDREL PANEL
 4. MECHANICAL EXHAUST SCREEN
 5. MECHANICAL EXHAUST SCREEN
 6. METAL AND GLASS CANOPY
 7. GLAZED CANOPY
 8. METAL, WOOD AND GLASS CANOPY
 9. METAL, WOOD AND GLASS CANOPY
 10. METAL, WOOD AND GLASS CANOPY
 11. FINISH CONCRETE TO MATCH CONCRETE COLOR
 12. GLASS CANOPY
 13. PRECAST CONCRETE PLANTER

PROJECT NO.: 0004
BURBY + ASSOCIATES ARCHITECTS
 1000 ...
 ...
 ...
 ...

PROJECT NO.: 0004
FOR PA
 ...
 ...
 ...

SMITH STREET E
 REVISED TO SH01

SCALE: 1/200
DATE: 11/27/2018
DESIGNED BY: [Signature]
CHECKED BY: [Signature]
APPROVED BY: [Signature]
DATE: 11/27/2018



SMITH STREET DEVELOPMENT

11/27/2018

SMITH STREET E
REVISED TO SH01

NO.	DESCRIPTION	UNIT	QUANTITY
1.	SHIMBOLATED COLORED CONCRETE		
2.	ALUMINUM CLADDING SYSTEM		
3.	GLAZED SWIRL PANEL		
4.	METAL AND GLASS CANOPY		
5.	METAL AND GLASS CANOPY		
6.	METAL AND GLASS CANOPY		
7.	METAL AND GLASS CANOPY		
8.	METAL, WOOD AND GLASS CANOPY		
9.	CONCRETE TO MATCH CONCRETE COLOR		
10.	GLASS CHAMBRAL		
11.	CONCRETE TO MATCH CONCRETE COLOR		
12.	GLASS CHAMBRAL		
13.	PRECIST CONCRETE PLANTER		

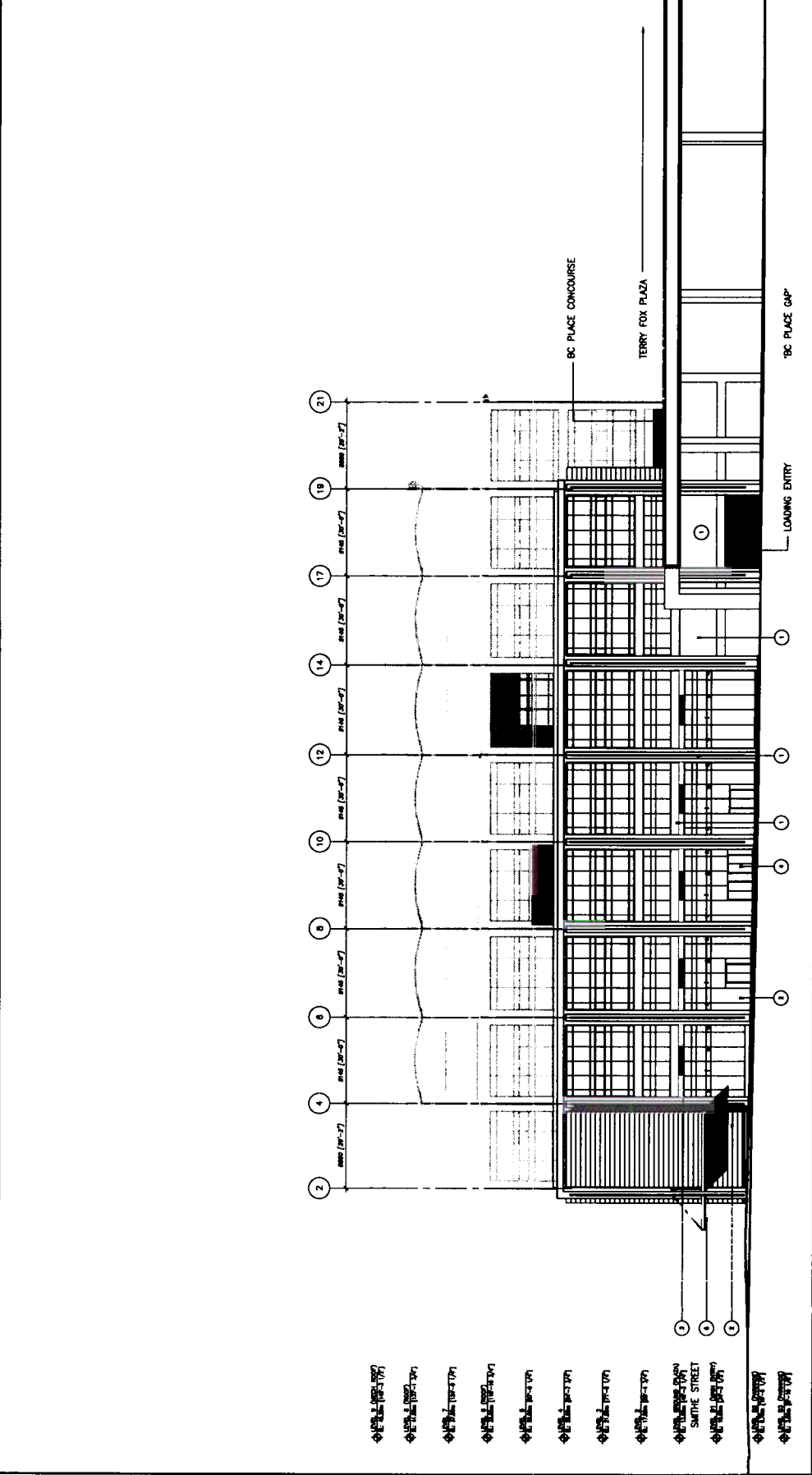
- MATERIALS LEGEND:**
1. SHIMBOLATED COLORED CONCRETE
 2. ALUMINUM CLADDING SYSTEM
 3. GLAZED SWIRL PANEL
 4. METAL AND GLASS CANOPY
 5. MECHANICAL EQUIPMENT SCREEN
 6. METAL AND GLASS CANOPY
 7. METAL AND GLASS CANOPY
 8. METAL, WOOD AND GLASS CANOPY
 9. CONCRETE TO MATCH CONCRETE COLOR
 10. GLASS CHAMBRAL
 11. CONCRETE TO MATCH CONCRETE COLOR
 12. GLASS CHAMBRAL
 13. PRECIST CONCRETE PLANTER


PROJECT NO. 0004
BLURBY + ASSOCIATES ARCHITECTS
 1000 WEST 10TH AVENUE
 SUITE 200
 VANCOUVER, BC V6H 2E6

PROPERTY NO. 858 BEATTY STREET
OFFICE DEVELOPMENT
 FOR **PA**

DATE: 12/01/2010
 DRAWING NO. 1200
 REVISIONS TO SHOW

DATE	12/01/2010
DRAWING NO.	1200
REVISIONS	
FILE NO.	0004/0004





EDCO BUILDING SOLUTIONS
 1200

NO.	REVISION	DATE
1	ISSUED FOR PERMIT	08/11/2011
2		
3		
4		
5		
6		
7		
8		
9		
10		
11		
12		
13		

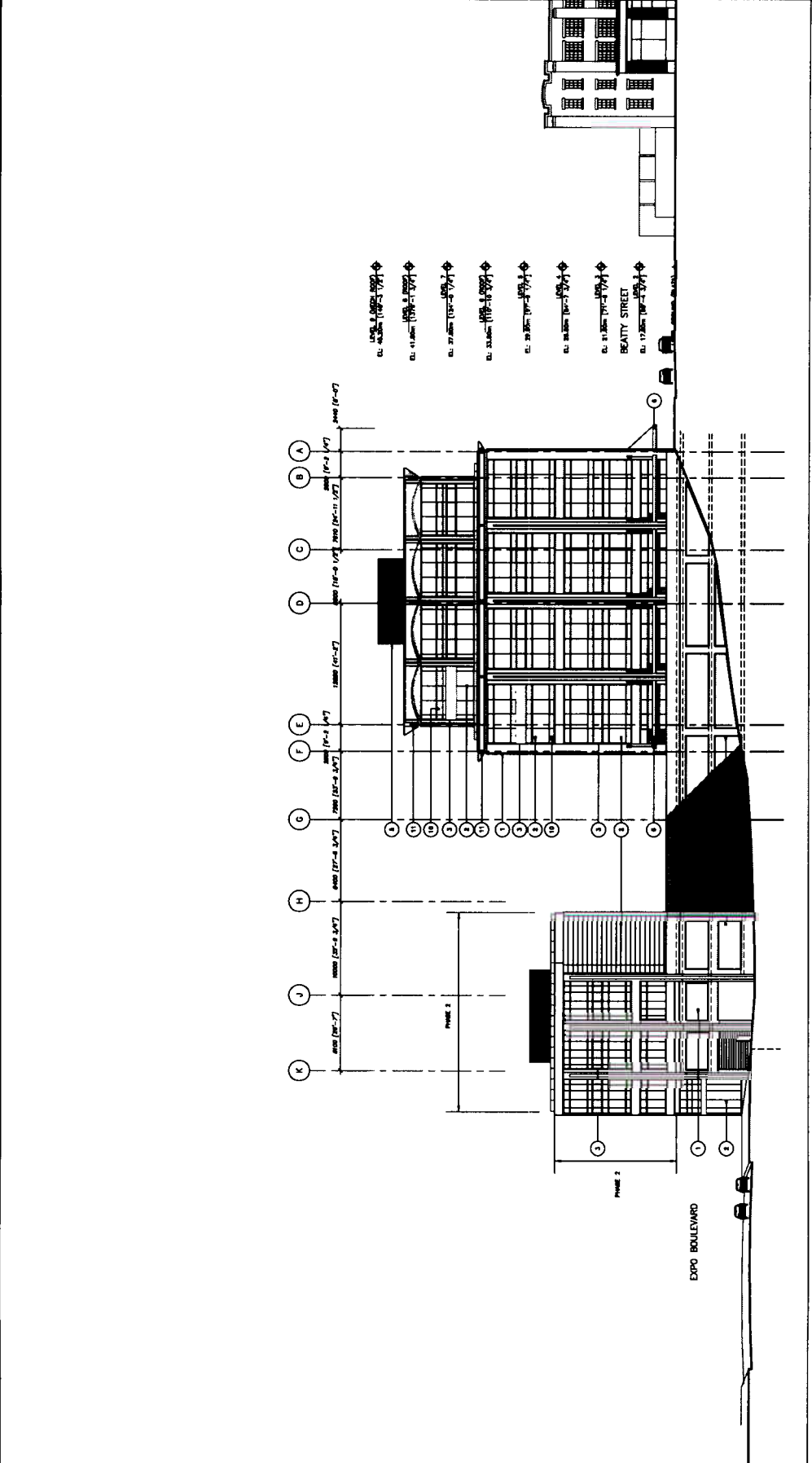
- MATERIALS LEGEND:**
1. SANDBLASTED COLORED CONCRETE
 2. ALUMINUM GLAZING SYSTEM
 3. GLAZED SPANDREL PANEL
 4. ALUMINUM CURTAIN WALL
 5. MECHANICAL EQUIPMENT SCREEN
 6. METAL AND GLASS CANOPY
 7. PLASTER AND COMPOUND
 8. METAL AND GLASS CANOPY
 9. METAL AND GLASS CANOPY
 10. FINISHES TO MATCH CONCRETE COLOR
 11. SANDBLASTED COLORED CONCRETE
 12. SANDBLASTED COLORED CONCRETE
 13. PRECAST CONCRETE PLANTER

PROJECT NO. 0004
 BLUMBERG + ASSOCIATES ARCHITECTS
 1000 15th St. N
 Minneapolis, MN 55403
 TEL: 612.338.1100
 FAX: 612.338.1101
 WWW.BLAUMBERGARCHITECTS.COM

FOR THE
FOR M
 181 BEAUTY STREET
 OFFICE ELEVATION

TESSER FOX PLAZA
 ELEVATION
 REFINED TO SHOW

DATE	08/11/2011
SCALE	1/8" = 1'-0"
DRAWN BY	MM
CHECKED BY	MM
PROJECT NO.	0004
SHEET NO.	05



- 01. 11'-0" (11'-0" - 11'-0")
- 02. 11'-0" (11'-0" - 11'-0")
- 03. 11'-0" (11'-0" - 11'-0")
- 04. 11'-0" (11'-0" - 11'-0")
- 05. 11'-0" (11'-0" - 11'-0")
- 06. 11'-0" (11'-0" - 11'-0")
- 07. 11'-0" (11'-0" - 11'-0")
- 08. 11'-0" (11'-0" - 11'-0")
- 09. 11'-0" (11'-0" - 11'-0")
- 10. 11'-0" (11'-0" - 11'-0")



TESSER FOX PLAZA ELEVATION
 1/8" = 1'-0"