


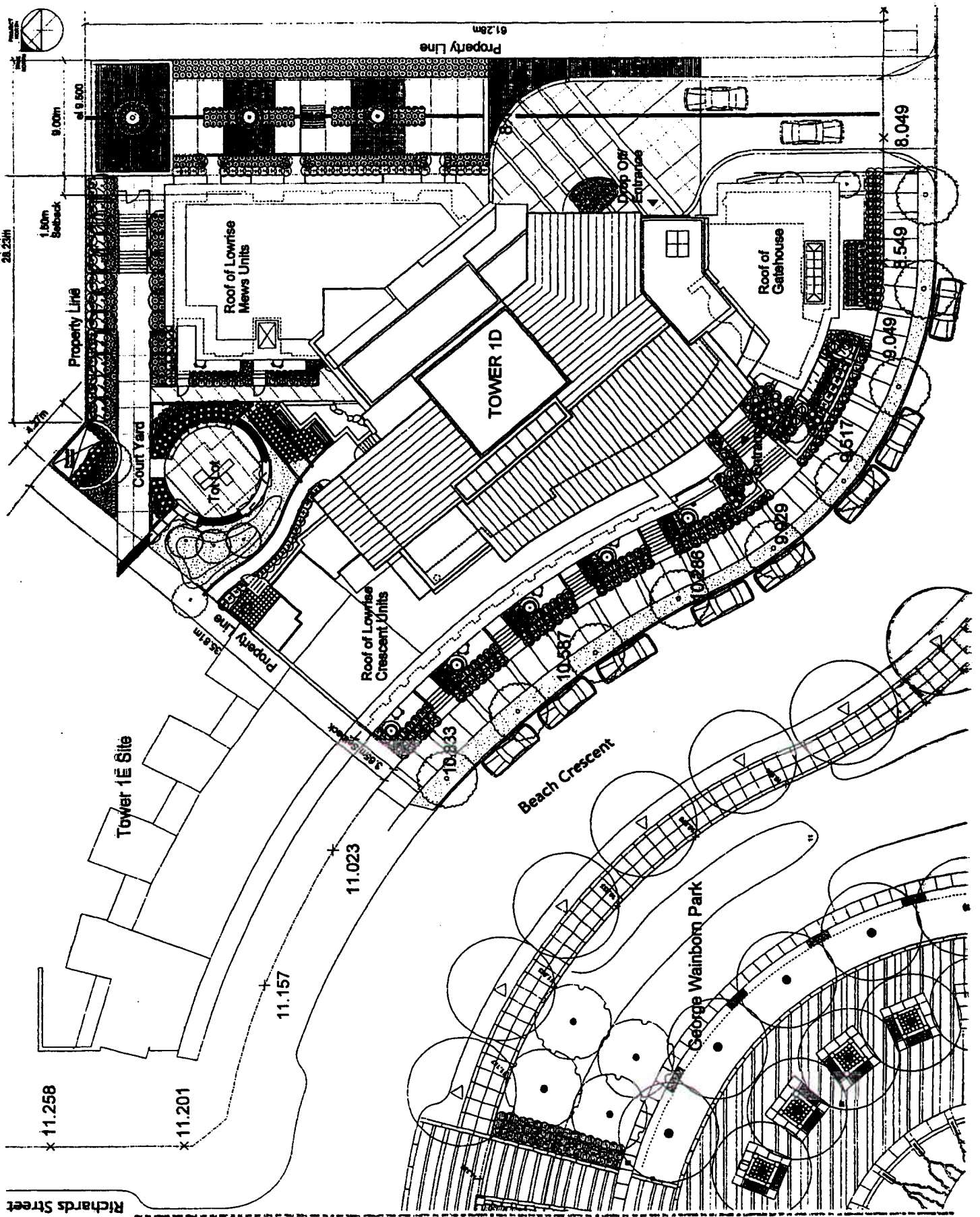
<p>455 BEACH CRESCENT DE 405455</p>	<p>DATE 2001 05 15</p>	
<p>CITY OF VANCOUVER PLANNING DEPARTMENT</p>	<p>DRAWN WGKS</p> <p>F:\FRMOPDEV\2001\455 BEACH CRESC.DWG</p>	

THE HULBERT GROUP
ARCHITECTS
1000 West Broadway, Suite 1000
Vancouver, B.C. V6H 4G1
Tel: 604-681-1111
Fax: 604-681-1112
www.hulbertgroup.com

NOTE: NOT FOR CONSTRUCTION
THIS DRAWING IS TO BE USED FOR INFORMATION PURPOSES ONLY

TOWER 1D - AREA 1B
FOR: PACIFIC PLACE DEVELOPMENT CORPORATION
BEACH NEIGHBOURHOOD FALSE CREEK NORTH VANCOUVER, B.C.

SITE PLAN
DATE: 11/11/11
SCALE: 1:100
DRAWN BY: [Name]
CHECKED BY: [Name]
DATE: 11/11/11
DP 2



Richards Street



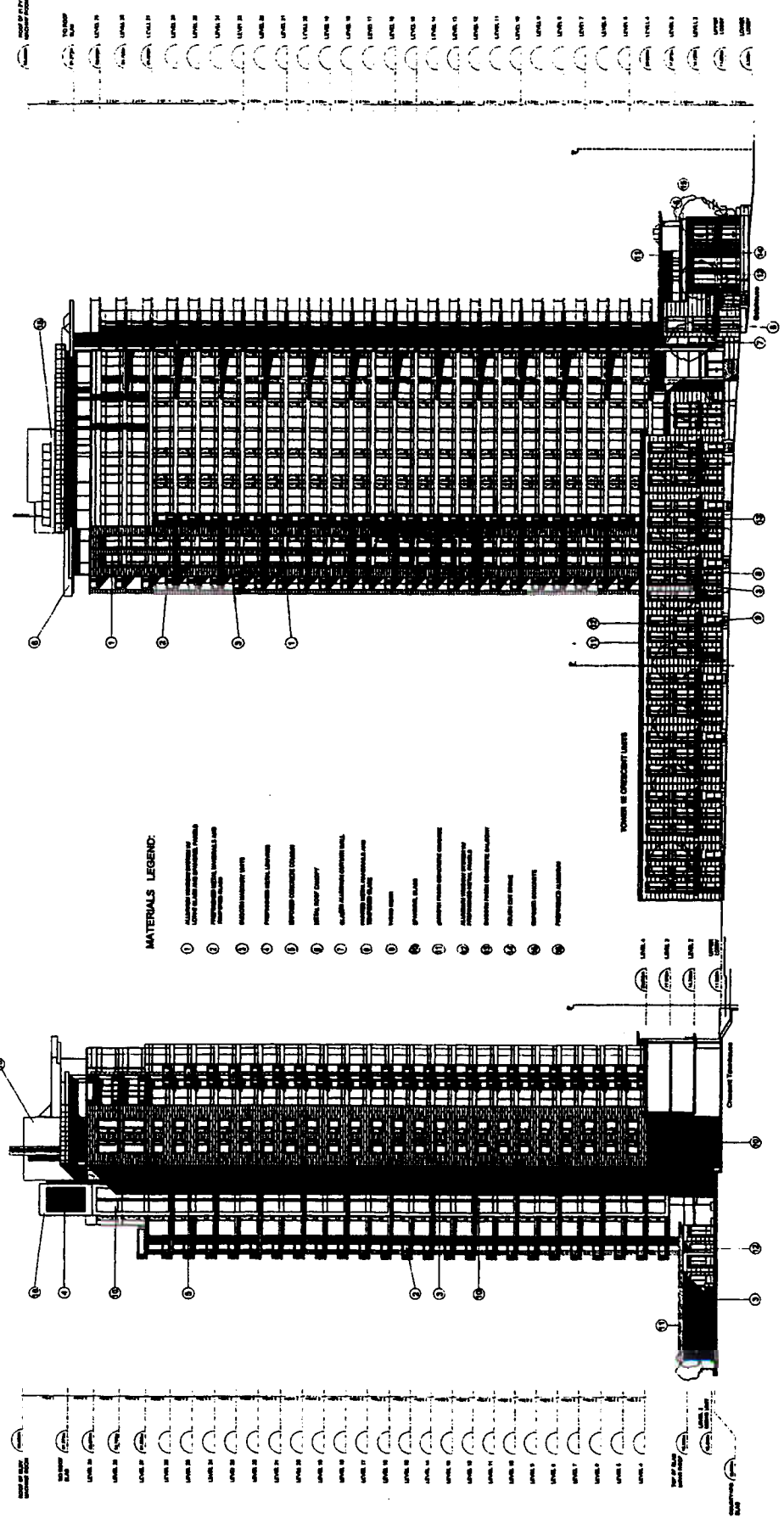
THE HULBERT GROUP
ARCHITECTS & COMMERCIAL ENGINEERS
1000 West Broadway, Suite 1000
Vancouver, B.C. V6C 2B5
Tel: 604-681-1111
Fax: 604-681-1112
www.hulbertgroup.com

NOTE: NOT FOR CONSTRUCTION
THIS DRAWING IS TO BE USED FOR REFERENCE PURPOSES ONLY.

TOWER 1D - AREA 1B
FOR: PACIFIC PLACE DEVELOPMENT CORPORATION
BEACH NEIGHBOURHOOD FALSE CREEK NORTH VANCOUVER, B.C.

CRESCENT & COURTYARD ELEVATIONS
DATE: 08/13/20
PROJECT NO: 1200
DRAWN BY: J.S.P.
CHECKED BY: J.S.P.
TEMPORARY FILE NAME

DP 12



MATERIALS LEGEND:

- 1 ALUMINUM WINDOW FRAMES, TYPICAL
- 2 GLASS CURTAIN WALL SYSTEM, TYPICAL
- 3 ALUMINUM WINDOW FRAMES, TYPICAL
- 4 ALUMINUM WINDOW FRAMES, TYPICAL
- 5 ALUMINUM WINDOW FRAMES, TYPICAL
- 6 ALUMINUM WINDOW FRAMES, TYPICAL
- 7 ALUMINUM WINDOW FRAMES, TYPICAL
- 8 ALUMINUM WINDOW FRAMES, TYPICAL
- 9 ALUMINUM WINDOW FRAMES, TYPICAL
- 10 ALUMINUM WINDOW FRAMES, TYPICAL
- 11 ALUMINUM WINDOW FRAMES, TYPICAL
- 12 ALUMINUM WINDOW FRAMES, TYPICAL



The Project: Beach Neighbourhood
 1000 West Broadway, Suite 1000
 Vancouver, British Columbia V6C 2E8
 Tel: 604.681.1111
 Fax: 604.681.1112
 Website: www.hulbertgroup.com

DATE: 12/12/12
 DRAWN BY: [Name]
 CHECKED BY: [Name]
 APPROVED BY: [Name]

NOTE: NOT FOR CONSTRUCTION
 THIS DRAWING IS TO BE USED FOR INFORMATION AND COORDINATION PURPOSES ONLY

FOR: PACIFIC PLACE DEVELOPMENT CORPORATION
 BEACH NEIGHBOURHOOD FALSE CREEK NORTH VANCOUVER, B.C.

TOWER 1D - AREA 1B

DATE: 12/12/12
 SCALE: 1/8" = 1'-0"

DATE: 12/12/12
 SCALE: 1/8" = 1'-0"

DATE: 12/12/12
 SCALE: 1/8" = 1'-0"

DATE: 12/12/12
 SCALE: 1/8" = 1'-0"

DATE: 12/12/12
 SCALE: 1/8" = 1'-0"

DATE: 12/12/12
 SCALE: 1/8" = 1'-0"

DATE: 12/12/12
 SCALE: 1/8" = 1'-0"

DATE: 12/12/12
 SCALE: 1/8" = 1'-0"

DATE: 12/12/12
 SCALE: 1/8" = 1'-0"

DATE: 12/12/12
 SCALE: 1/8" = 1'-0"

DATE: 12/12/12
 SCALE: 1/8" = 1'-0"



- MATERIALS LEGEND:**
- ① MASONRY: BRICKWORK WITH LIGHT COLOURED GROUT
 - ② MASONRY: BRICKWORK WITH DARK GROUT
 - ③ MASONRY: BRICKWORK WITH LIGHT GROUT
 - ④ MASONRY: BRICKWORK WITH DARK GROUT
 - ⑤ MASONRY: BRICKWORK WITH LIGHT GROUT
 - ⑥ MASONRY: BRICKWORK WITH DARK GROUT
 - ⑦ MASONRY: BRICKWORK WITH LIGHT GROUT
 - ⑧ MASONRY: BRICKWORK WITH DARK GROUT
 - ⑨ MASONRY: BRICKWORK WITH LIGHT GROUT
 - ⑩ MASONRY: BRICKWORK WITH DARK GROUT
 - ⑪ MASONRY: BRICKWORK WITH LIGHT GROUT
 - ⑫ MASONRY: BRICKWORK WITH DARK GROUT
 - ⑬ MASONRY: BRICKWORK WITH LIGHT GROUT
 - ⑭ MASONRY: BRICKWORK WITH DARK GROUT
 - ⑮ MASONRY: BRICKWORK WITH LIGHT GROUT
 - ⑯ MASONRY: BRICKWORK WITH DARK GROUT
 - ⑰ MASONRY: BRICKWORK WITH LIGHT GROUT
 - ⑱ MASONRY: BRICKWORK WITH DARK GROUT
 - ⑲ MASONRY: BRICKWORK WITH LIGHT GROUT
 - ⑳ MASONRY: BRICKWORK WITH DARK GROUT
 - ㉑ MASONRY: BRICKWORK WITH LIGHT GROUT
 - ㉒ MASONRY: BRICKWORK WITH DARK GROUT
 - ㉓ MASONRY: BRICKWORK WITH LIGHT GROUT
 - ㉔ MASONRY: BRICKWORK WITH DARK GROUT
 - ㉕ MASONRY: BRICKWORK WITH LIGHT GROUT
 - ㉖ MASONRY: BRICKWORK WITH DARK GROUT
 - ㉗ MASONRY: BRICKWORK WITH LIGHT GROUT
 - ㉘ MASONRY: BRICKWORK WITH DARK GROUT
 - ㉙ MASONRY: BRICKWORK WITH LIGHT GROUT
 - ㉚ MASONRY: BRICKWORK WITH DARK GROUT
 - ㉛ MASONRY: BRICKWORK WITH LIGHT GROUT
 - ㉜ MASONRY: BRICKWORK WITH DARK GROUT
 - ㉝ MASONRY: BRICKWORK WITH LIGHT GROUT
 - ㉞ MASONRY: BRICKWORK WITH DARK GROUT
 - ㉟ MASONRY: BRICKWORK WITH LIGHT GROUT
 - ㊱ MASONRY: BRICKWORK WITH DARK GROUT
 - ㊲ MASONRY: BRICKWORK WITH LIGHT GROUT
 - ㊳ MASONRY: BRICKWORK WITH DARK GROUT
 - ㊴ MASONRY: BRICKWORK WITH LIGHT GROUT
 - ㊵ MASONRY: BRICKWORK WITH DARK GROUT
 - ㊶ MASONRY: BRICKWORK WITH LIGHT GROUT
 - ㊷ MASONRY: BRICKWORK WITH DARK GROUT
 - ㊸ MASONRY: BRICKWORK WITH LIGHT GROUT
 - ㊹ MASONRY: BRICKWORK WITH DARK GROUT
 - ㊺ MASONRY: BRICKWORK WITH LIGHT GROUT
 - ㊻ MASONRY: BRICKWORK WITH DARK GROUT
 - ㊼ MASONRY: BRICKWORK WITH LIGHT GROUT
 - ㊽ MASONRY: BRICKWORK WITH DARK GROUT
 - ㊾ MASONRY: BRICKWORK WITH LIGHT GROUT
 - ㊿ MASONRY: BRICKWORK WITH DARK GROUT

