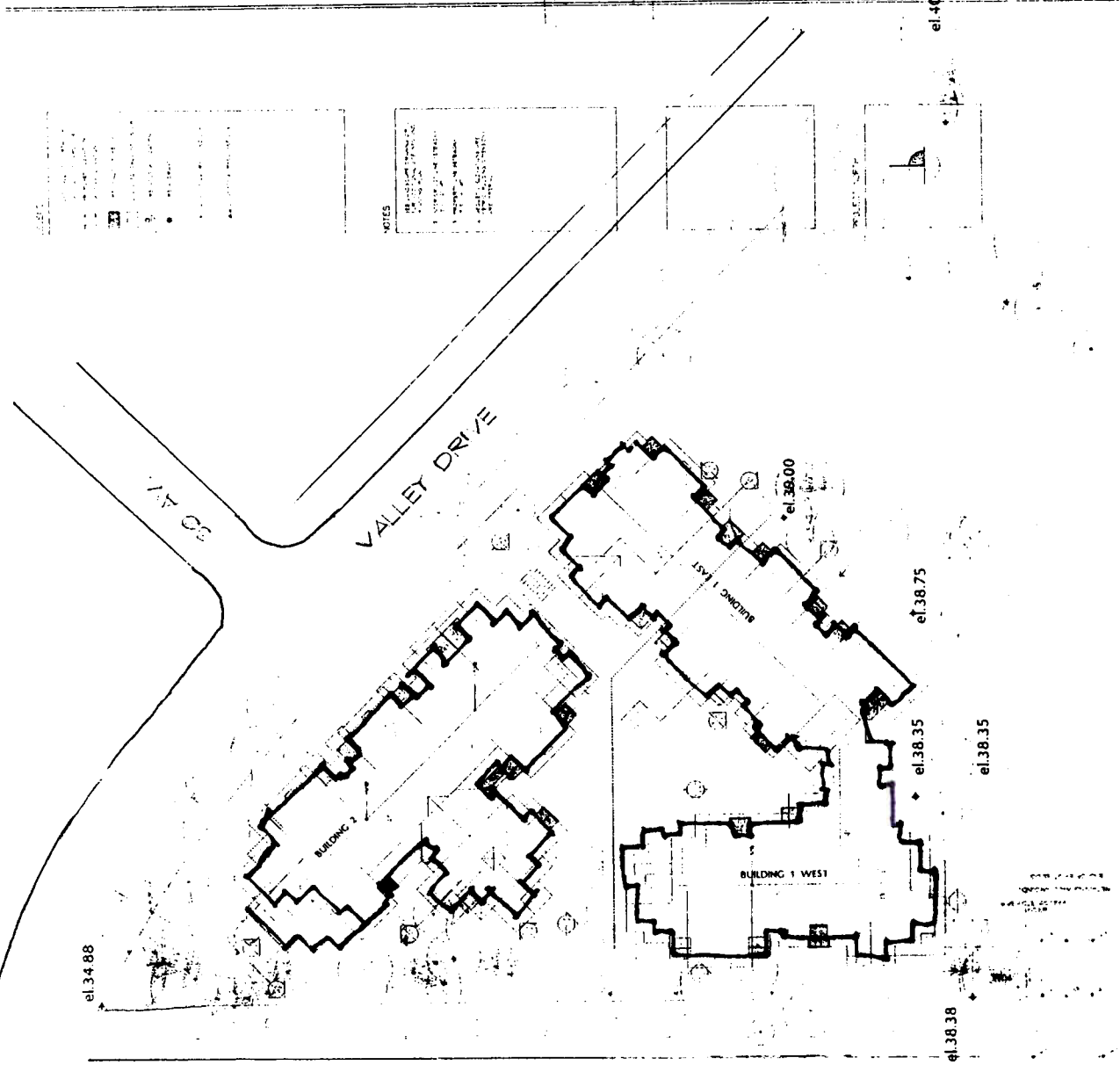


----- PARCEL BOUNDARY
 - - - - - ZONING BOUNDARY

4625 VALLEY DRIVE. DE 403589	DATE 1999 12 20	↑
	DRAWN WGKS & DY	
CITY OF VANCOUVER PLANNING DEPARTMENT	FILENAME :Q:\MAJOR PROJECTS\VF\RMOFDEV\4625VAL.DWG	

Paul Merrick, Architect



ARBUTHUS STREET

VALLEY DRIVE

BUILDING 2

BUILDING 1 WEST

BUILDING 1 EAST

el. 34.88

el. 38.00

el. 38.75

el. 38.35

el. 38.35

el. 38.38

NOTES

1. ALL DIMENSIONS ARE TO FACE UNLESS OTHERWISE NOTED.

2. ALL FINISHES ARE TO BE AS SHOWN ON THE FINISH SCHEDULE.

3. ALL UTILITIES ARE TO BE AS SHOWN ON THE UTILITIES PLAN.

4. ALL ELEVATIONS ARE TO FINISH UNLESS OTHERWISE NOTED.

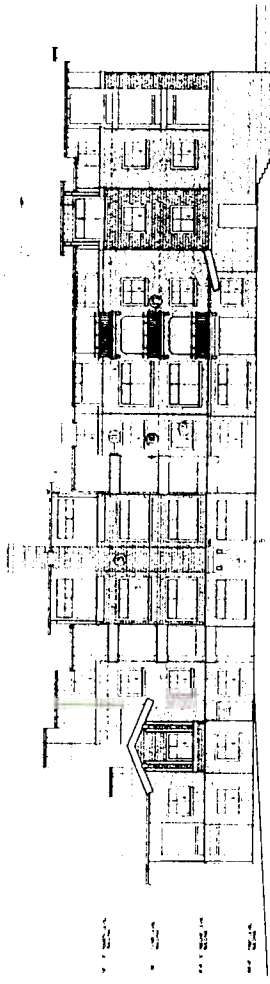
5. ALL DISTANCES ARE TO CENTERLINE UNLESS OTHERWISE NOTED.

6. ALL DISTANCES ARE TO CENTERLINE UNLESS OTHERWISE NOTED.

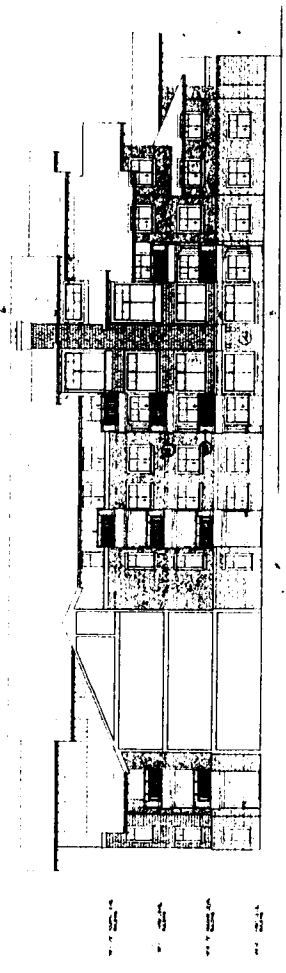
7. ALL DISTANCES ARE TO CENTERLINE UNLESS OTHERWISE NOTED.

8. ALL DISTANCES ARE TO CENTERLINE UNLESS OTHERWISE NOTED.

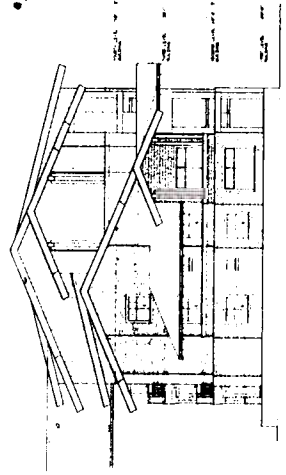
el. 40



BUILDING 1 WEST

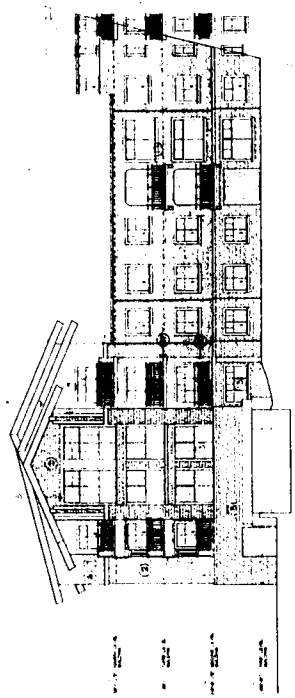


BUILDING 1 NORTHEAST

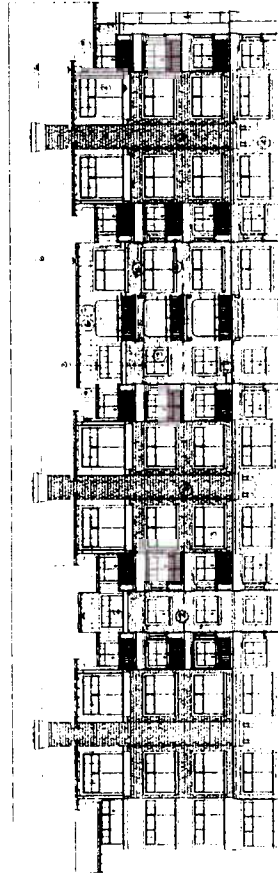


BUILDING 1 NORTH

FOR THE BOARD OF SUPERVISORS
COUNTY OF SAN JOAQUIN
CALIFORNIA
RECEIVED
MAY 1 1983
COUNTY ADMINISTRATOR'S OFFICE



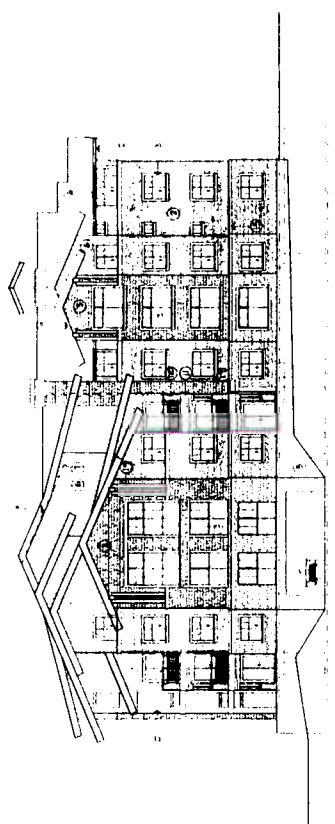
BUILDING 1 SOUTH



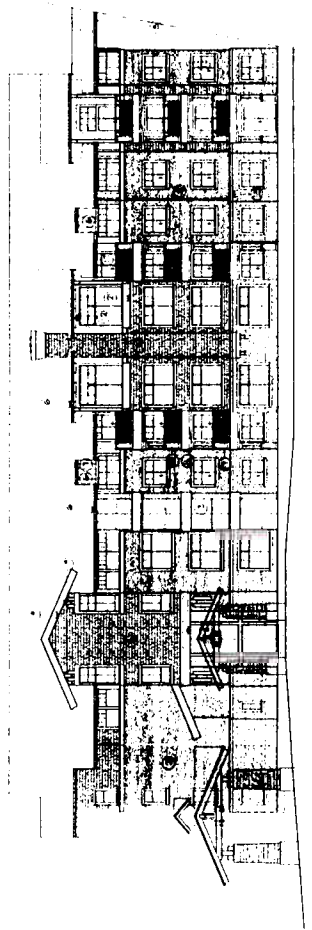
BUILDING 1 SOUTHEAST

- 1 3/4" BRICK WALL - 4" NGLES
- 2 1/2" 1/2" BOND
- 3 1/2" 1/2" BOND
- 4 CONCRETE BLOCK
- 5 1/2" 1/2" CONCRETE
- 6 1/2" 1/2" CONCRETE
- 7 1/2" 1/2" CONCRETE
- 8 1/2" 1/2" CONCRETE
- 9 1/2" 1/2" CONCRETE
- 10 1/2" 1/2" CONCRETE
- 11 1/2" 1/2" CONCRETE
- 12 1/2" 1/2" CONCRETE
- 13 1/2" 1/2" CONCRETE
- 14 1/2" 1/2" CONCRETE
- 15 1/2" 1/2" CONCRETE
- 16 1/2" 1/2" CONCRETE
- 17 1/2" 1/2" CONCRETE
- 18 1/2" 1/2" CONCRETE
- 19 1/2" 1/2" CONCRETE
- 20 1/2" 1/2" CONCRETE
- 21 1/2" 1/2" CONCRETE
- 22 1/2" 1/2" CONCRETE
- 23 1/2" 1/2" CONCRETE
- 24 1/2" 1/2" CONCRETE
- 25 1/2" 1/2" CONCRETE
- 26 1/2" 1/2" CONCRETE
- 27 1/2" 1/2" CONCRETE
- 28 1/2" 1/2" CONCRETE
- 29 1/2" 1/2" CONCRETE
- 30 1/2" 1/2" CONCRETE
- 31 1/2" 1/2" CONCRETE
- 32 1/2" 1/2" CONCRETE
- 33 1/2" 1/2" CONCRETE
- 34 1/2" 1/2" CONCRETE
- 35 1/2" 1/2" CONCRETE
- 36 1/2" 1/2" CONCRETE
- 37 1/2" 1/2" CONCRETE
- 38 1/2" 1/2" CONCRETE
- 39 1/2" 1/2" CONCRETE
- 40 1/2" 1/2" CONCRETE
- 41 1/2" 1/2" CONCRETE
- 42 1/2" 1/2" CONCRETE
- 43 1/2" 1/2" CONCRETE
- 44 1/2" 1/2" CONCRETE
- 45 1/2" 1/2" CONCRETE
- 46 1/2" 1/2" CONCRETE
- 47 1/2" 1/2" CONCRETE
- 48 1/2" 1/2" CONCRETE
- 49 1/2" 1/2" CONCRETE
- 50 1/2" 1/2" CONCRETE
- 51 1/2" 1/2" CONCRETE
- 52 1/2" 1/2" CONCRETE
- 53 1/2" 1/2" CONCRETE
- 54 1/2" 1/2" CONCRETE
- 55 1/2" 1/2" CONCRETE
- 56 1/2" 1/2" CONCRETE
- 57 1/2" 1/2" CONCRETE
- 58 1/2" 1/2" CONCRETE
- 59 1/2" 1/2" CONCRETE
- 60 1/2" 1/2" CONCRETE
- 61 1/2" 1/2" CONCRETE
- 62 1/2" 1/2" CONCRETE
- 63 1/2" 1/2" CONCRETE
- 64 1/2" 1/2" CONCRETE
- 65 1/2" 1/2" CONCRETE
- 66 1/2" 1/2" CONCRETE
- 67 1/2" 1/2" CONCRETE
- 68 1/2" 1/2" CONCRETE
- 69 1/2" 1/2" CONCRETE
- 70 1/2" 1/2" CONCRETE
- 71 1/2" 1/2" CONCRETE
- 72 1/2" 1/2" CONCRETE
- 73 1/2" 1/2" CONCRETE
- 74 1/2" 1/2" CONCRETE
- 75 1/2" 1/2" CONCRETE
- 76 1/2" 1/2" CONCRETE
- 77 1/2" 1/2" CONCRETE
- 78 1/2" 1/2" CONCRETE
- 79 1/2" 1/2" CONCRETE
- 80 1/2" 1/2" CONCRETE
- 81 1/2" 1/2" CONCRETE
- 82 1/2" 1/2" CONCRETE
- 83 1/2" 1/2" CONCRETE
- 84 1/2" 1/2" CONCRETE
- 85 1/2" 1/2" CONCRETE
- 86 1/2" 1/2" CONCRETE
- 87 1/2" 1/2" CONCRETE
- 88 1/2" 1/2" CONCRETE
- 89 1/2" 1/2" CONCRETE
- 90 1/2" 1/2" CONCRETE
- 91 1/2" 1/2" CONCRETE
- 92 1/2" 1/2" CONCRETE
- 93 1/2" 1/2" CONCRETE
- 94 1/2" 1/2" CONCRETE
- 95 1/2" 1/2" CONCRETE
- 96 1/2" 1/2" CONCRETE
- 97 1/2" 1/2" CONCRETE
- 98 1/2" 1/2" CONCRETE
- 99 1/2" 1/2" CONCRETE
- 100 1/2" 1/2" CONCRETE

11/11/03
11/11/03
11/11/03

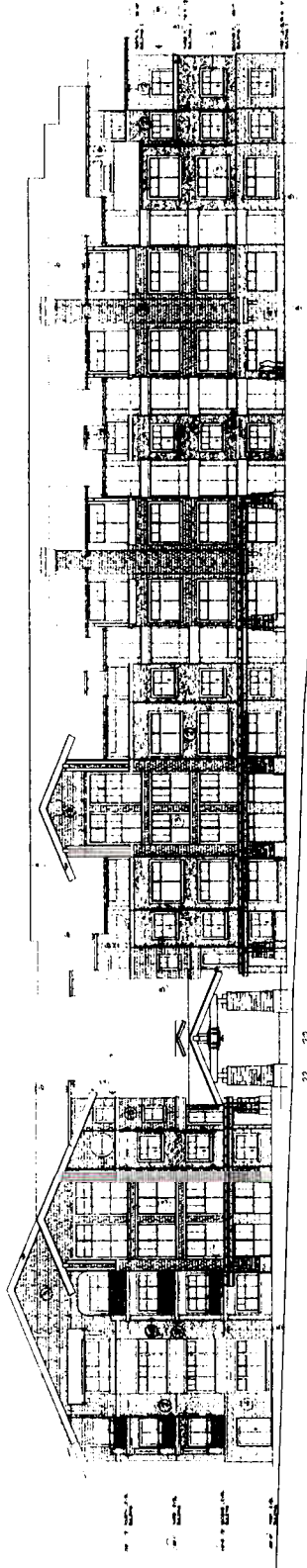


BUILDING 2 NORTHWEST



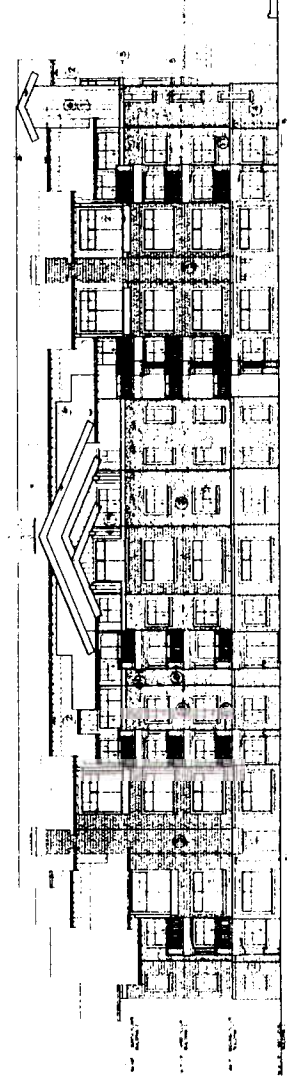
BUILDING 1 NORTHWEST

NO.	DESCRIPTION	QTY	UNIT	PRICE	TOTAL
1	CONCRETE	100	CU YD	120.00	12000.00
2	STEEL	500	LB	0.40	200.00
3	BRICK	2000	SQ YD	1.50	3000.00
4	ROOFING	100	SQ YD	1.00	100.00
5	PAINT	500	GA	0.20	100.00
6	PLASTER	100	SQ YD	1.00	100.00
7	MECHANICAL	100	HR	1.00	100.00
8	ELECTRICAL	100	HR	1.00	100.00
9	LANDSCAPE	100	SQ YD	1.00	100.00
10	FOUNDATION	100	SQ YD	1.00	100.00
11	ROOFING	100	SQ YD	1.00	100.00
12	PAINT	100	GA	0.20	20.00
13	PLASTER	100	SQ YD	1.00	100.00
14	MECHANICAL	100	HR	1.00	100.00
15	ELECTRICAL	100	HR	1.00	100.00
16	LANDSCAPE	100	SQ YD	1.00	100.00
17	FOUNDATION	100	SQ YD	1.00	100.00
18	ROOFING	100	SQ YD	1.00	100.00
19	PAINT	100	GA	0.20	20.00
20	PLASTER	100	SQ YD	1.00	100.00
21	MECHANICAL	100	HR	1.00	100.00
22	ELECTRICAL	100	HR	1.00	100.00
23	LANDSCAPE	100	SQ YD	1.00	100.00
24	FOUNDATION	100	SQ YD	1.00	100.00
25	ROOFING	100	SQ YD	1.00	100.00
26	PAINT	100	GA	0.20	20.00
27	PLASTER	100	SQ YD	1.00	100.00
28	MECHANICAL	100	HR	1.00	100.00
29	ELECTRICAL	100	HR	1.00	100.00
30	LANDSCAPE	100	SQ YD	1.00	100.00
31	FOUNDATION	100	SQ YD	1.00	100.00
32	ROOFING	100	SQ YD	1.00	100.00
33	PAINT	100	GA	0.20	20.00
34	PLASTER	100	SQ YD	1.00	100.00
35	MECHANICAL	100	HR	1.00	100.00
36	ELECTRICAL	100	HR	1.00	100.00
37	LANDSCAPE	100	SQ YD	1.00	100.00
38	FOUNDATION	100	SQ YD	1.00	100.00
39	ROOFING	100	SQ YD	1.00	100.00
40	PAINT	100	GA	0.20	20.00
41	PLASTER	100	SQ YD	1.00	100.00
42	MECHANICAL	100	HR	1.00	100.00
43	ELECTRICAL	100	HR	1.00	100.00
44	LANDSCAPE	100	SQ YD	1.00	100.00
45	FOUNDATION	100	SQ YD	1.00	100.00
46	ROOFING	100	SQ YD	1.00	100.00
47	PAINT	100	GA	0.20	20.00
48	PLASTER	100	SQ YD	1.00	100.00
49	MECHANICAL	100	HR	1.00	100.00
50	ELECTRICAL	100	HR	1.00	100.00
51	LANDSCAPE	100	SQ YD	1.00	100.00
52	FOUNDATION	100	SQ YD	1.00	100.00
53	ROOFING	100	SQ YD	1.00	100.00
54	PAINT	100	GA	0.20	20.00
55	PLASTER	100	SQ YD	1.00	100.00
56	MECHANICAL	100	HR	1.00	100.00
57	ELECTRICAL	100	HR	1.00	100.00
58	LANDSCAPE	100	SQ YD	1.00	100.00
59	FOUNDATION	100	SQ YD	1.00	100.00
60	ROOFING	100	SQ YD	1.00	100.00
61	PAINT	100	GA	0.20	20.00
62	PLASTER	100	SQ YD	1.00	100.00
63	MECHANICAL	100	HR	1.00	100.00
64	ELECTRICAL	100	HR	1.00	100.00
65	LANDSCAPE	100	SQ YD	1.00	100.00
66	FOUNDATION	100	SQ YD	1.00	100.00
67	ROOFING	100	SQ YD	1.00	100.00
68	PAINT	100	GA	0.20	20.00
69	PLASTER	100	SQ YD	1.00	100.00
70	MECHANICAL	100	HR	1.00	100.00
71	ELECTRICAL	100	HR	1.00	100.00
72	LANDSCAPE	100	SQ YD	1.00	100.00
73	FOUNDATION	100	SQ YD	1.00	100.00
74	ROOFING	100	SQ YD	1.00	100.00
75	PAINT	100	GA	0.20	20.00
76	PLASTER	100	SQ YD	1.00	100.00
77	MECHANICAL	100	HR	1.00	100.00
78	ELECTRICAL	100	HR	1.00	100.00
79	LANDSCAPE	100	SQ YD	1.00	100.00
80	FOUNDATION	100	SQ YD	1.00	100.00
81	ROOFING	100	SQ YD	1.00	100.00
82	PAINT	100	GA	0.20	20.00
83	PLASTER	100	SQ YD	1.00	100.00
84	MECHANICAL	100	HR	1.00	100.00
85	ELECTRICAL	100	HR	1.00	100.00
86	LANDSCAPE	100	SQ YD	1.00	100.00
87	FOUNDATION	100	SQ YD	1.00	100.00
88	ROOFING	100	SQ YD	1.00	100.00
89	PAINT	100	GA	0.20	20.00
90	PLASTER	100	SQ YD	1.00	100.00
91	MECHANICAL	100	HR	1.00	100.00
92	ELECTRICAL	100	HR	1.00	100.00
93	LANDSCAPE	100	SQ YD	1.00	100.00
94	FOUNDATION	100	SQ YD	1.00	100.00
95	ROOFING	100	SQ YD	1.00	100.00
96	PAINT	100	GA	0.20	20.00
97	PLASTER	100	SQ YD	1.00	100.00
98	MECHANICAL	100	HR	1.00	100.00
99	ELECTRICAL	100	HR	1.00	100.00
100	LANDSCAPE	100	SQ YD	1.00	100.00



BUILDING 1 EAST

BUILDING 2 EAST



BUILDING 2 WEST

- 1. CONCRETE
- 2. BRICK
- 3. GLASS
- 4. METAL
- 5. WOOD
- 6. PLASTER
- 7. STUCCO
- 8. TERRAZZO
- 9. MARBLE
- 10. GRANITE
- 11. SLATE
- 12. CERAMIC
- 13. ENAMEL
- 14. PAINT
- 15. VARNISH
- 16. POLISH
- 17. LACQUER
- 18. OIL
- 19. WATER
- 20. GEL
- 21. PASTE
- 22. POWDER
- 23. LIQUID
- 24. SOLID
- 25. GASEOUS
- 26. PLASMA
- 27. BEAM
- 28. WAVE
- 29. PARTICLE
- 30. FIELD
- 31. FORCE
- 32. ENERGY
- 33. MATTER
- 34. SPACE
- 35. TIME
- 36. MOTION
- 37. CHANGE
- 38. GROWTH
- 39. DEATH
- 40. REBIRTH
- 41. TRANSFORMATION
- 42. EVOLUTION
- 43. REVO
- 44. LUTION
- 45. REVOLUTION
- 46. REVOLUTION
- 47. REVOLUTION
- 48. REVOLUTION
- 49. REVOLUTION
- 50. REVOLUTION