



# Update from the Director of Transportation

**City Finance & Services**

November 15<sup>th</sup>

# Transportation Update

## Project Updates

Burrard Bridge

Cambie Bridge

Alexander Street Bikeway

Millennium Line Broadway Extension

## Planning Updates

Gastown Complete Streets

Georgia Street Gateway West

False Creek Flats East Access Plan

## Policy

Transit Fare Policy Review

Congestion Management Strategy

Mobility Pricing



An aerial photograph of Vancouver, British Columbia, showing the city's skyline, the harbor, and the mountains in the distance. A semi-transparent blue overlay covers the top half of the image.

# Project Updates

An aerial view of the Burrard Bridge in Vancouver, showing the bridge crossing the Burrard Inlet, with a marina and residential areas visible on the left side.

**Burrard Bridge**

An aerial view of the Cambie Bridge in Vancouver, showing the bridge crossing the Cambie River, with a marina and residential areas visible on the left side.

**Cambie Bridge**

An aerial view of Alexander Street in Vancouver, showing the street running through the city, with a marina and residential areas visible on the left side.

**Alexander Street Bikeway**

An aerial view of the Millennium Line in Vancouver, showing the line running through the city, with a marina and residential areas visible on the left side.

**Millennium Line Broadway Extension**



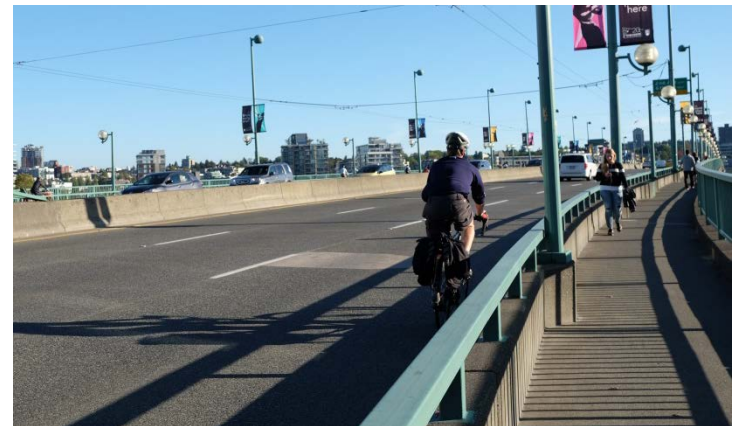
# Burrard Bridge



# Cambie Bridge

## BACKGROUND

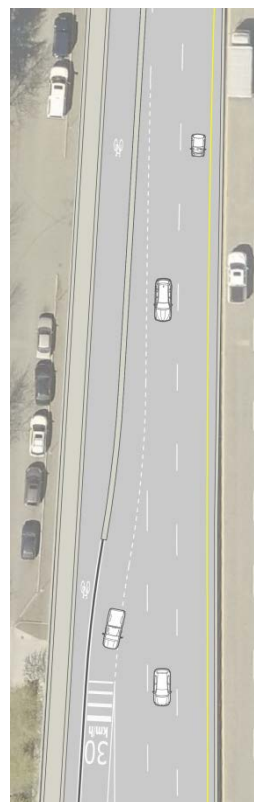
- **2013: Council Update**
  - Projected shared path capacity exceeded by 2020
- **2014-16 New PBLs Connect**
  - Beatty, Smithe, and Nelson
- **2017 Monthly Bike Volumes**
  - June up approximately 60% since 2012



# Cambie Bridge

## PROPOSAL

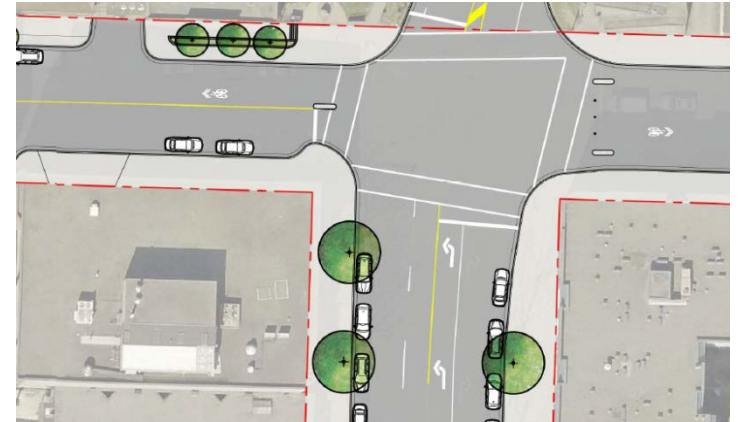
- **SB Protected Bike Lane**
  - Barriers along curb lane & side of southern off-ramp
- **Minimal impacts**
  - Travel time increase ~10s
  - No vehicle capacity impact
  - Cost - approximately \$400k
- **Open House Nov 30<sup>th</sup>**
  - Already discussing with BIAs, trucking, other stakeholders





# Alexander Street Bikeway

- **AAA Local Street Bikeway**
  - Carrall-Powell Overpass link
  - 5-Yr Cycling Network priority
- **Reduce motor vehicle volumes & speeds**
  - Full closure east of Main
  - Few parking/access impacts
- **Open House Nov 21<sup>st</sup>**
  - Builds on meetings with BIAs, businesses, partners



# Millennium Line Broadway Extension (MLBE)

## Working Towards Procurement Readiness

- Q4 2017
  - Held the first Mayor's Forum on MLBE Construction Mitigation (OCT)
  - Developing & reviewing City Principles and/or Strategies (NOV-DEC) with:
    - Business and Community Advisory Group
    - Other Advisory Groups
- Q1-Q2 2018
  - Review Draft Strategies with Mayor's Forum (JAN)
  - Engage the public on Draft Principles and Strategies (MAR)
  - Present City Principles and Strategies for approval by Council (MAR/APR)







# Planning Updates



**Gastown Complete Streets**



**Georgia Street Gateway West**



**False Creek Flats  
East Access Plan**



# Gastown Complete Streets

- Gastown’s streets require major repair and rehabilitation.
- This presents a once in a lifetime opportunity to holistically plan the streets.

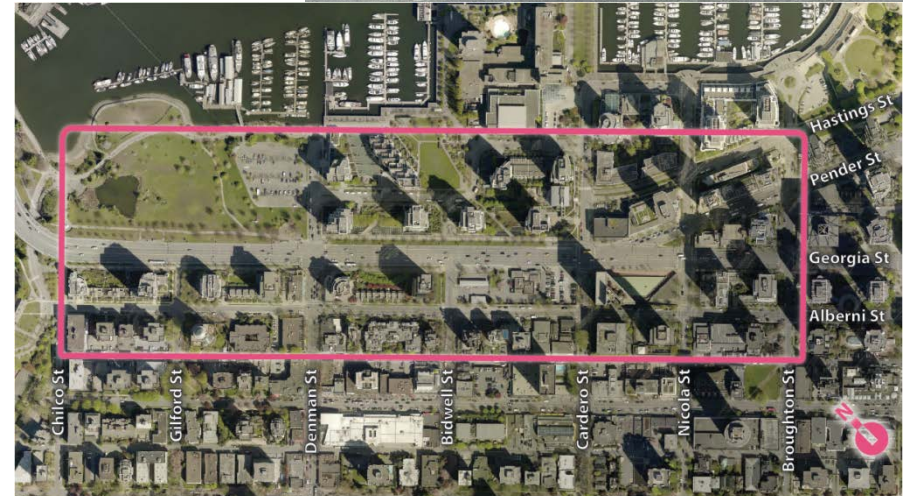


MOVEMENT + GATHERING + RECONCILIATION + HERITAGE + COMMUNITY

# Georgia Street Gateway West

Public engagement beginning in Nov:

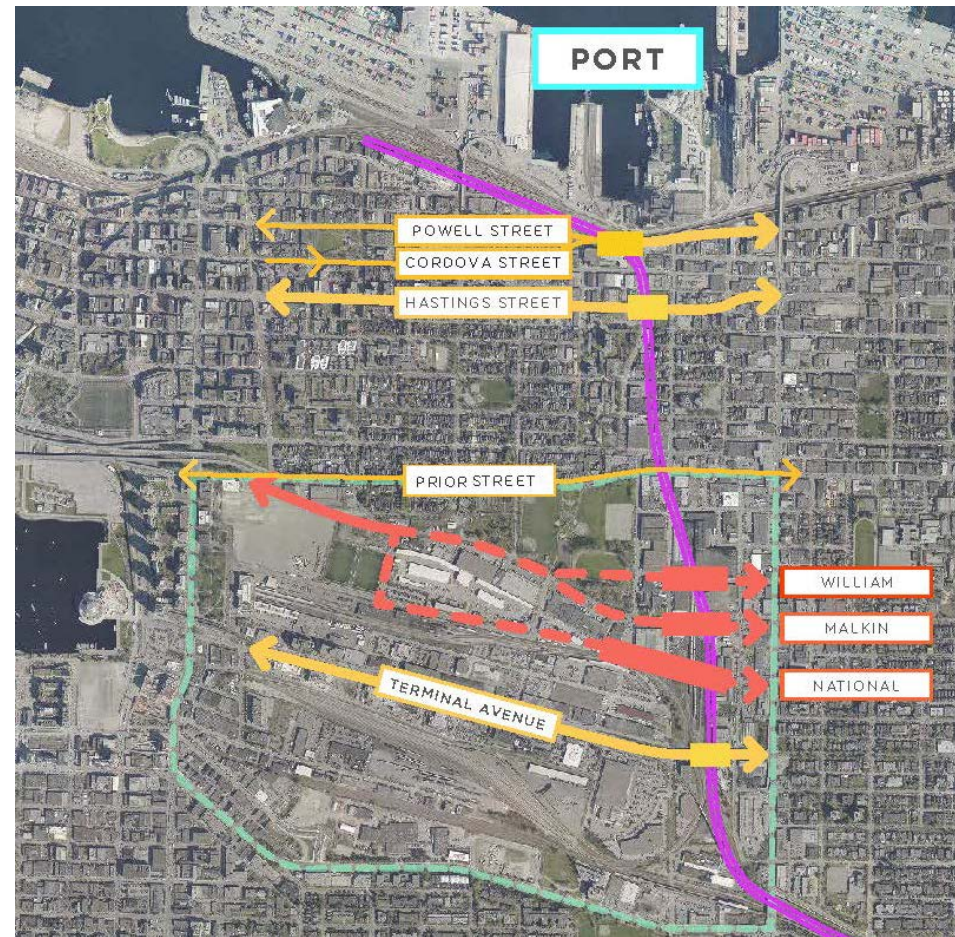
- Create a Complete Street vision for Georgia St as gateway to Vancouver
- Develop a comprehensive transportation planning strategy for Georgia Street West area
- Identify the opportunities to coordinate with new developments





# False Creek Flats East Access Plan

- **Need**  
Arterial overpass across rail
- **Status**  
Multiple alignment options have been explored
- **Next Steps**  
Continue engagement through a Community Panel process to identify a preferred route







# Policy Updates

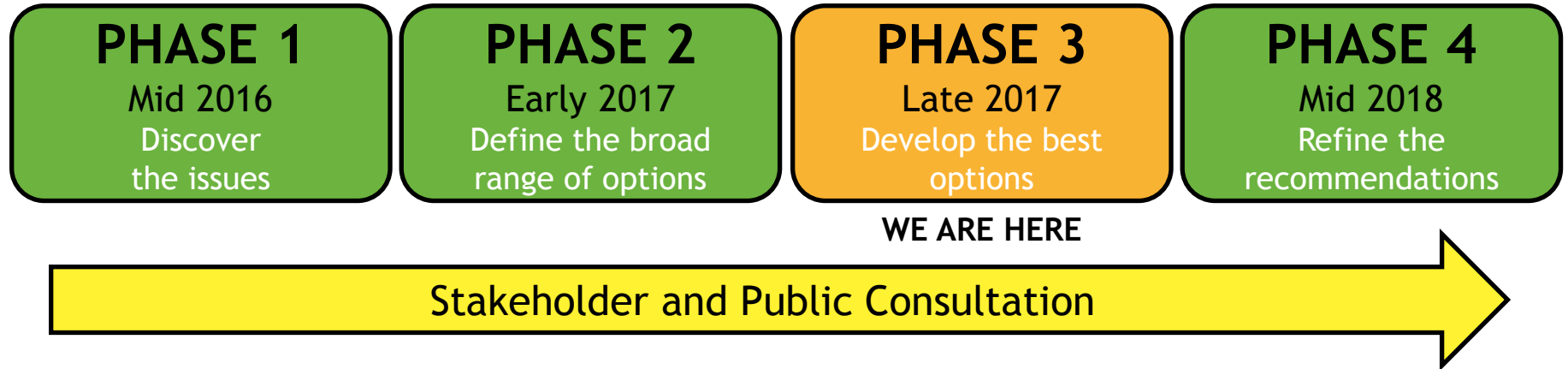
**Transit Fare Policy Review**

**Congestion Management**

**Mobility Pricing**

**Parking Meter Program  
Update**

# Transit Fare Policy Review



Phase 3 will recommend updated fare structure that is:

- Simple to understand and calculate
- Fair and affordable
- Helps to improve service, reduces overcrowding
- Grows ridership, maintains revenue

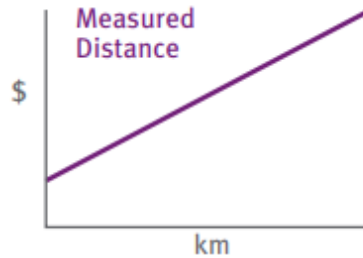
Phase 3 Public Consultation runs from Nov 16 - Dec 8



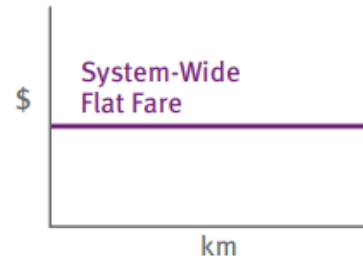
# Transit Fare Policy Review

Phase 2 consultation identified support for:

- SkyTrain - Fares by Distance



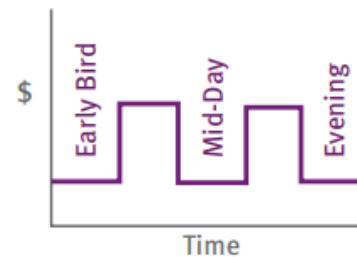
- Bus - Flat fares



- Premium fares - for West Coast Express

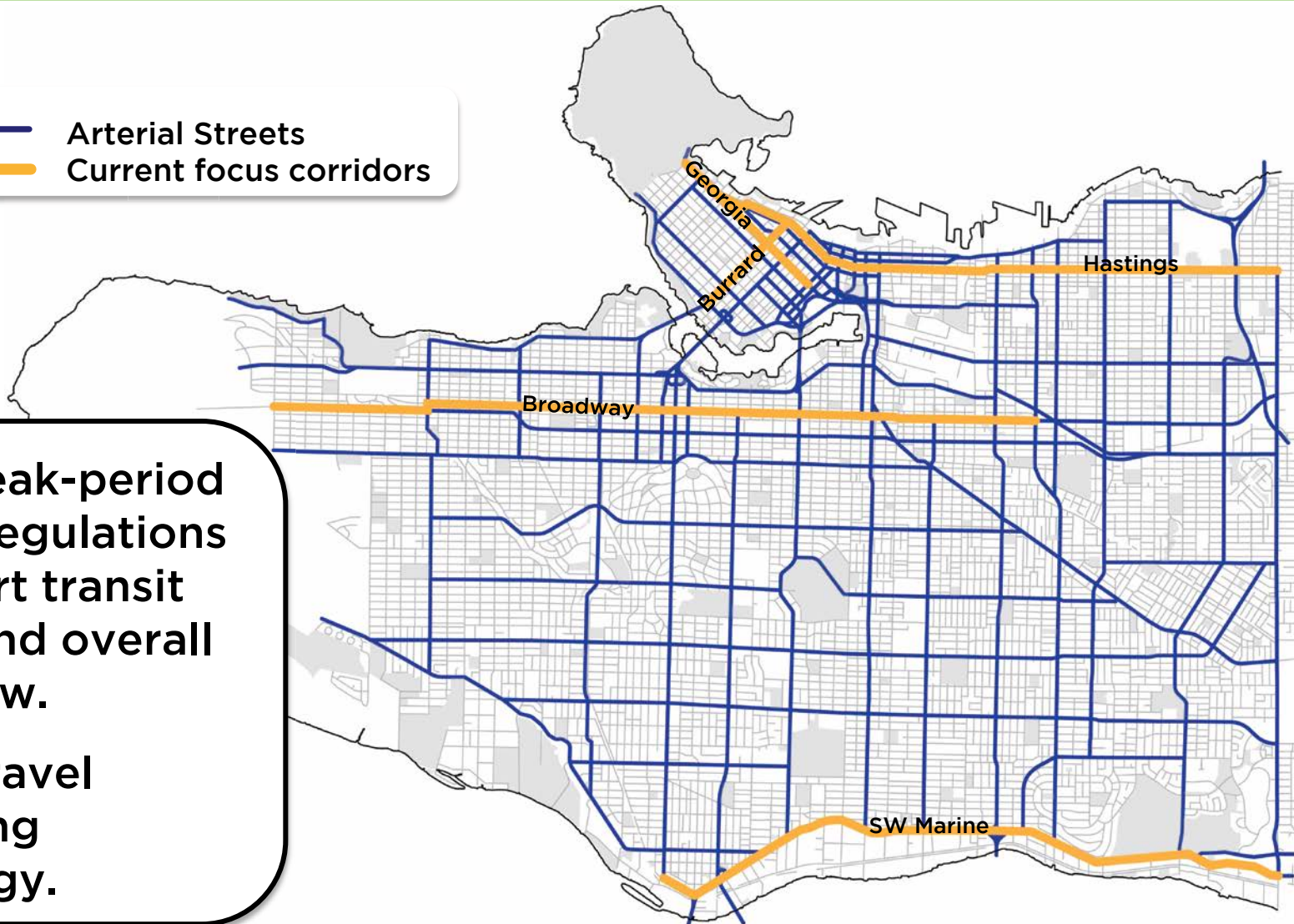


- Lower fares off-peak



# Congestion Management Strategy: Implementation

— Arterial Streets  
— Current focus corridors



Adjust peak-period parking regulations to support transit service and overall traffic flow.

Deploy travel monitoring technology.

# Congestion Management: Transit Related Benefits

- Increased transit speed and reliability enables more efficient use of TransLink resources
- Focus on person carrying capacity of roadways



## Shorter-term Opportunities

- Extend peak period bus lane times
- Trial red pavement treatment at key bus stops
- Improve passenger queue management at key bus stops



# Mobility Pricing



An independent commission is exploring new approaches to reduce congestion

## Study Phases

**Now to December 2017**

Commission conducts research & engagement

**January 2018 to April 2018**

Commission engages further & presents recommendations

**May 2018 +**

Steering Committee & Mayor's Council decides how to proceed



**IT'S TIME**

To address congestion in Metro Vancouver



**Reduce traffic congestion**



**Promote fairness**



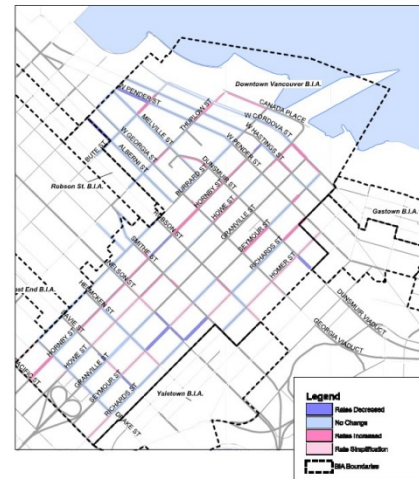
**Support transportation investment**

# Parking Meter Program Update

Implemented a data driven approach to adjusting parking meter rates annually to achieve a target occupancy of 1 to 2 spaces per block

- Rates simplified to whole dollar intervals
- Introduced daytime and evening rate periods.
- Ability to introduce metering at any location in the City to optimize parking conditions

2017 Parking Meter Rates Changes in the Downtown Vancouver BIA Daytime (9 AM - 6 PM)



## 2017 Parking Meter Rate Changes

	Daytime (9 AM - 6 PM)		Evening (6 PM to 10 PM)	
	Spaces	% of Total	Spaces	% of Total
Rates Decreased	1104	11%	2955	30%
Rates Unchanged or Simplified	7356	74%	6045	61%
Rates Increased	1371	14%	838	9%



An aerial photograph of a city, likely Vancouver, showing a large body of water in the foreground, a city skyline in the middle ground, and mountains in the background. A large blue semi-transparent rectangle covers the top half of the image, serving as a background for the title text.

# Council Reports

**By-law 2849 Updates &  
Skateboards in protected bike  
lanes report back**

**2017 Active Transportation  
Planning Updates**