

10<sup>th</sup> Ave Health  
Precinct  
Street  
Improvements

# Council Presentation: 10<sup>th</sup> Ave Health Precinct Street Improvements

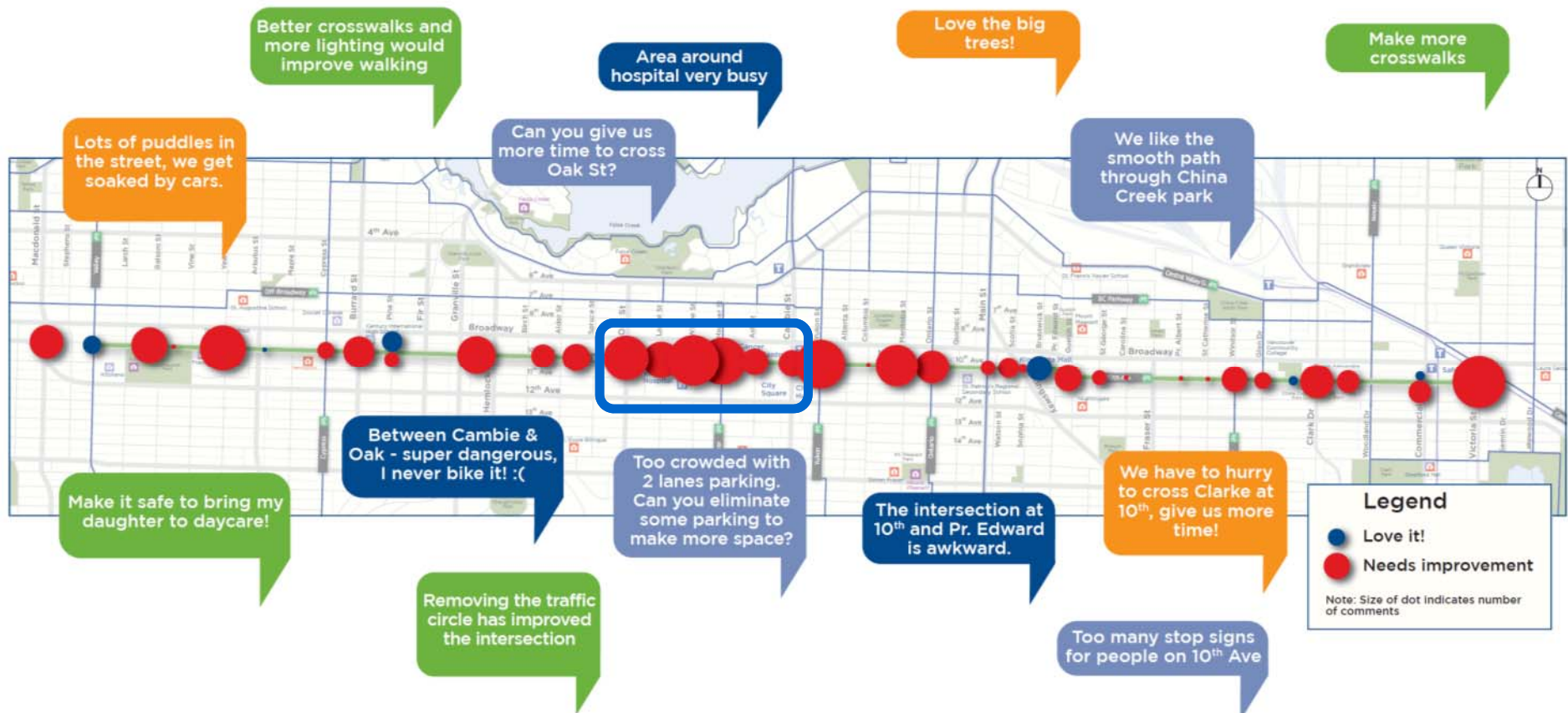


# Presentation Agenda

1. Overview
2. What We've Heard
3. Engagement Process
4. 10 Recommended Actions
5. Safety Implications
6. Parking Implications
7. Project Phasing
8. VCH / BCCA Perspectives

# 10<sup>th</sup> Ave Health Precinct Street Improvements

## Overview



# What We've Heard



10<sup>th</sup> Ave Health  
Precinct  
Street  
Improvements

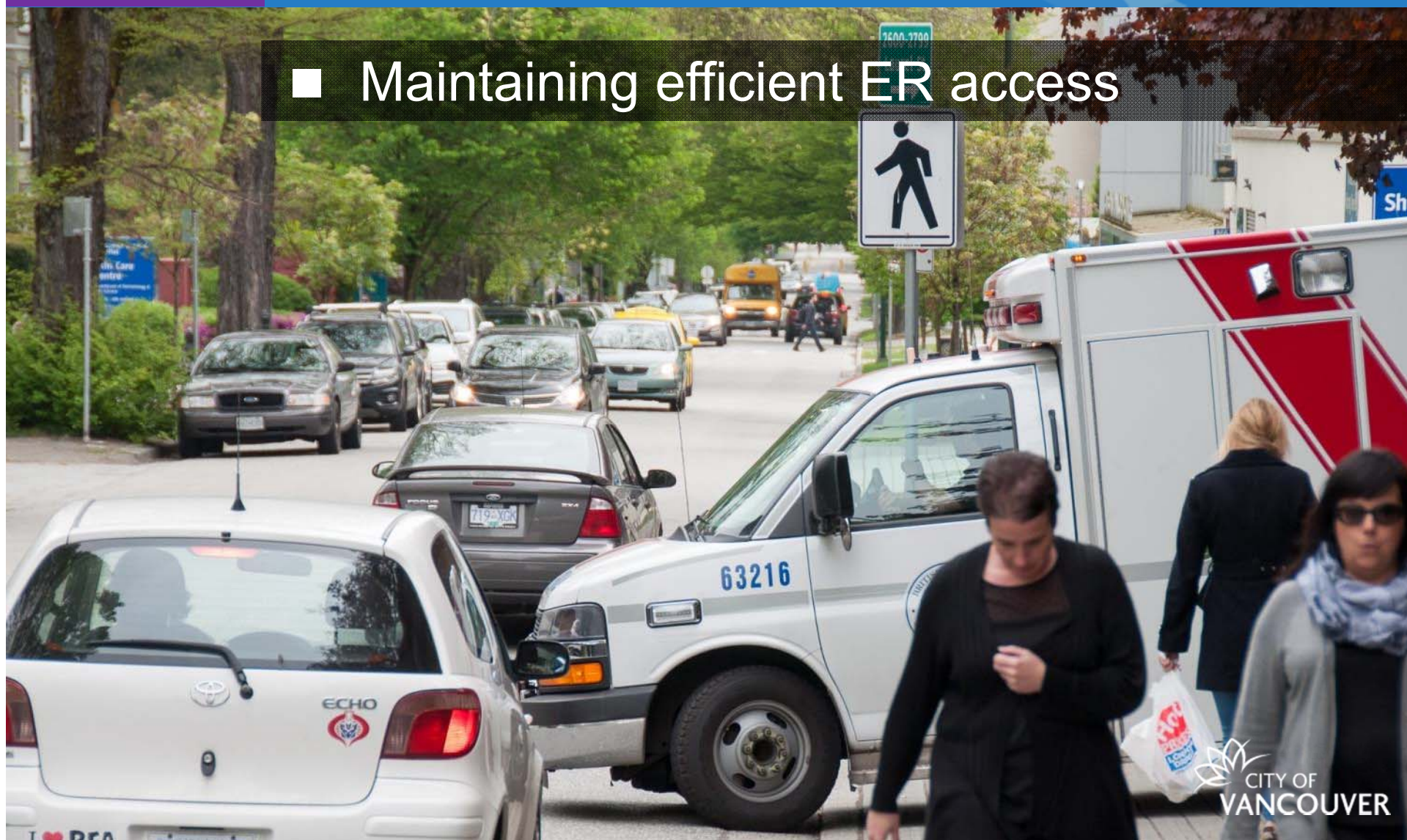
# Health Precinct: Challenges and Opportunities





## Health Precinct: Challenges and Opportunities

- Maintaining efficient ER access





## Health Precinct: Challenges and Opportunities

- High numbers of pedestrians with accessibility needs





## Health Precinct: Challenges and Opportunities

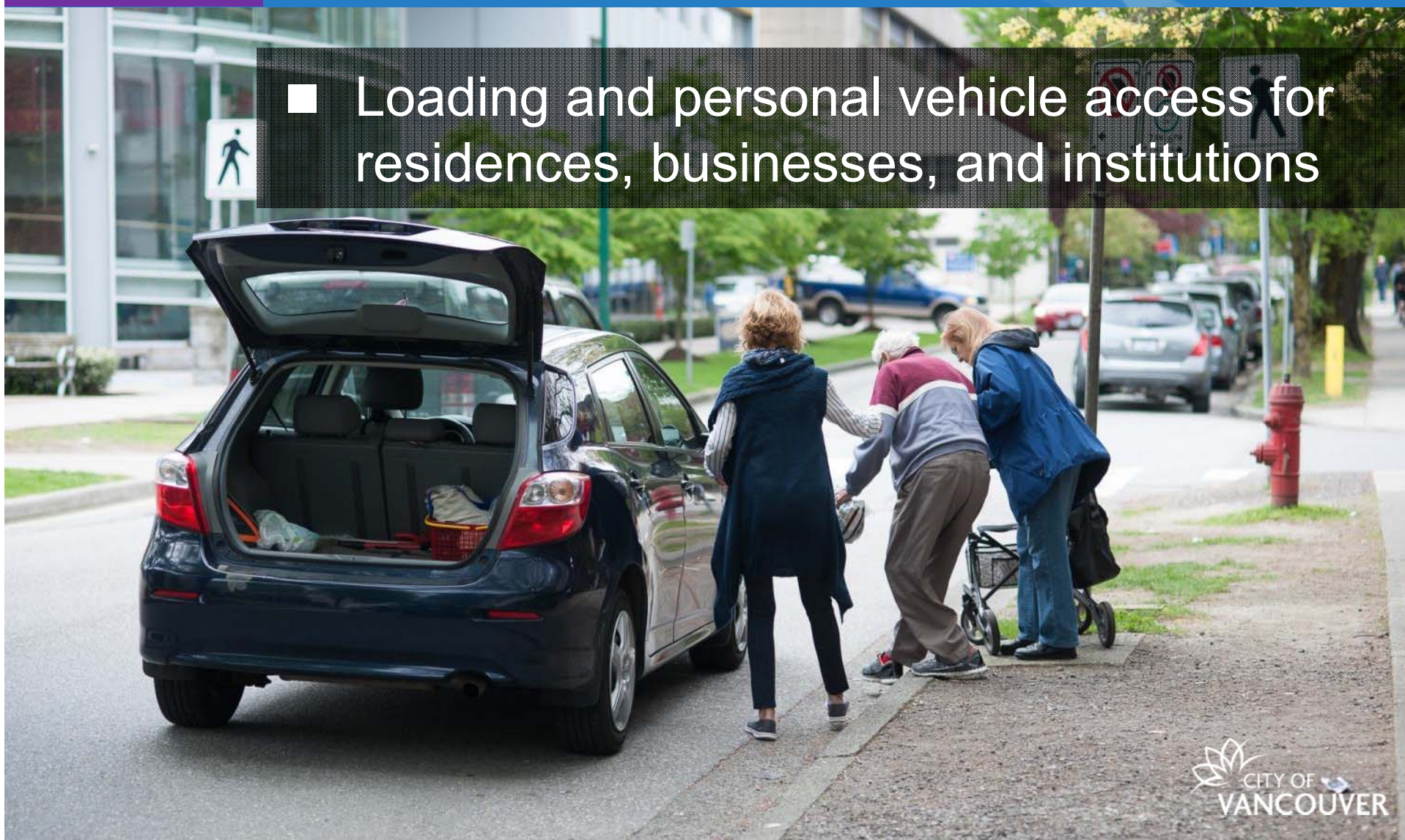
- Vehicles with special accessibility needs





## Health Precinct: Challenges and Opportunities

- Loading and personal vehicle access for residences, businesses, and institutions





# Health Precinct: Challenges and Opportunities

## ■ Primary hospital loading access





# Health Precinct: Challenges and Opportunities

- Mature tree canopy





# Health Precinct: Challenges and Opportunities

- High pedestrian volumes





## Health Precinct: Challenges and Opportunities

- High bike, car, and truck volumes



Over 60% of people biking  
on 10<sup>th</sup> had destinations in  
or just outside the Health  
Precinct



# Health Precinct: Challenges and Opportunities

- Narrow / constrained right-of-way

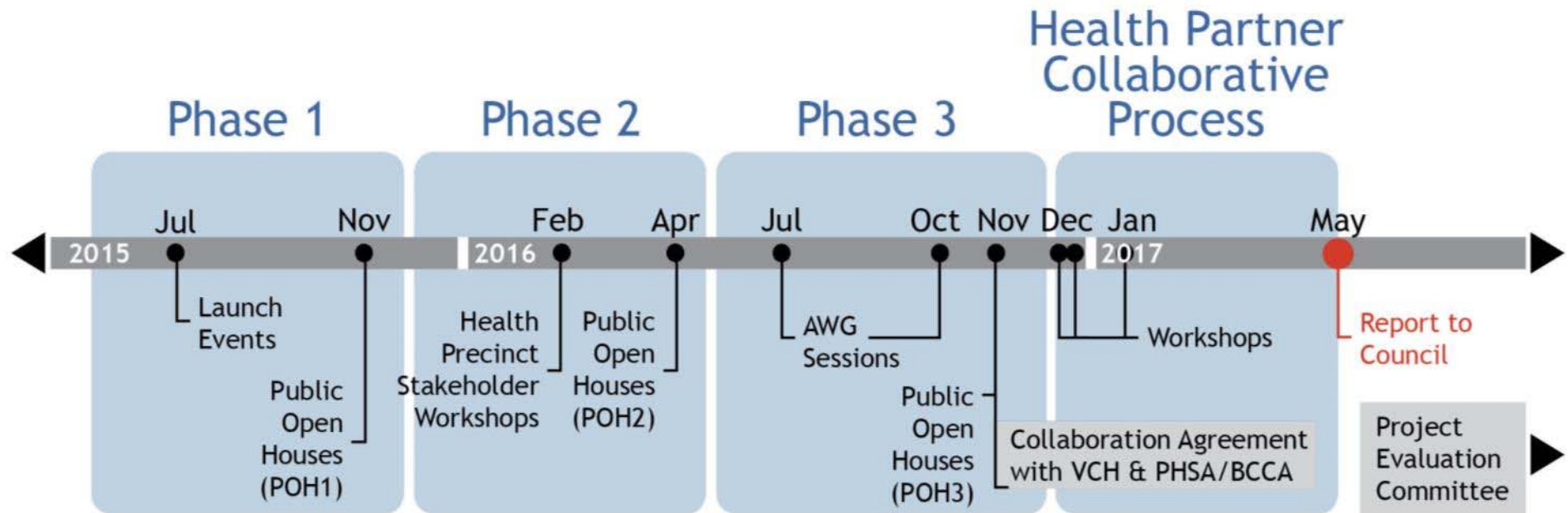




# Engagement Process

10<sup>th</sup> Ave Health  
Precinct  
Street  
Improvements

# 10<sup>th</sup> Avenue Health Precinct Process





10<sup>th</sup> Ave Health  
Precinct  
Street  
Improvements

# Health Precinct Collaborative Process





## Collaborative Process Hierarchy of Needs – Top Priorities

- Emergency room access
- Vulnerable pedestrians
- Patients and wayfinding
- Loading and servicing
- Drop-off and door access
- Accessible parking
- General pedestrians
- Seniors and children biking



## 10<sup>th</sup> Ave Health Precinct Engagement (all Phases)

By the  
Numbers:

700

Attended  
Open Houses

3,360

Surveys  
completed

85+

Stakeholder  
meetings

240

Emails and 3-1-1  
responses

30+

Health Precinct stakeholder  
groups/ service providers  
included in discussions



# Actions



## 10 Actions

1. Create a “Hospital Zone” and educate road users
2. Improve safety and comfort for patients and other vulnerable pedestrians
3. Enhance pick-up/drop-off areas
4. Ensure convenient parking for patients with disabilities
5. Improve alternate bike routes
6. Physically separate type of road users
7. Convert 10<sup>th</sup> Ave to one-way westbound
8. Add new bus stops and improve HandyDART access
9. Adjust residential permit parking
10. Establish project evaluation committee

# 1. Create a “Hospital Zone”



## Wayfinding and Messaging



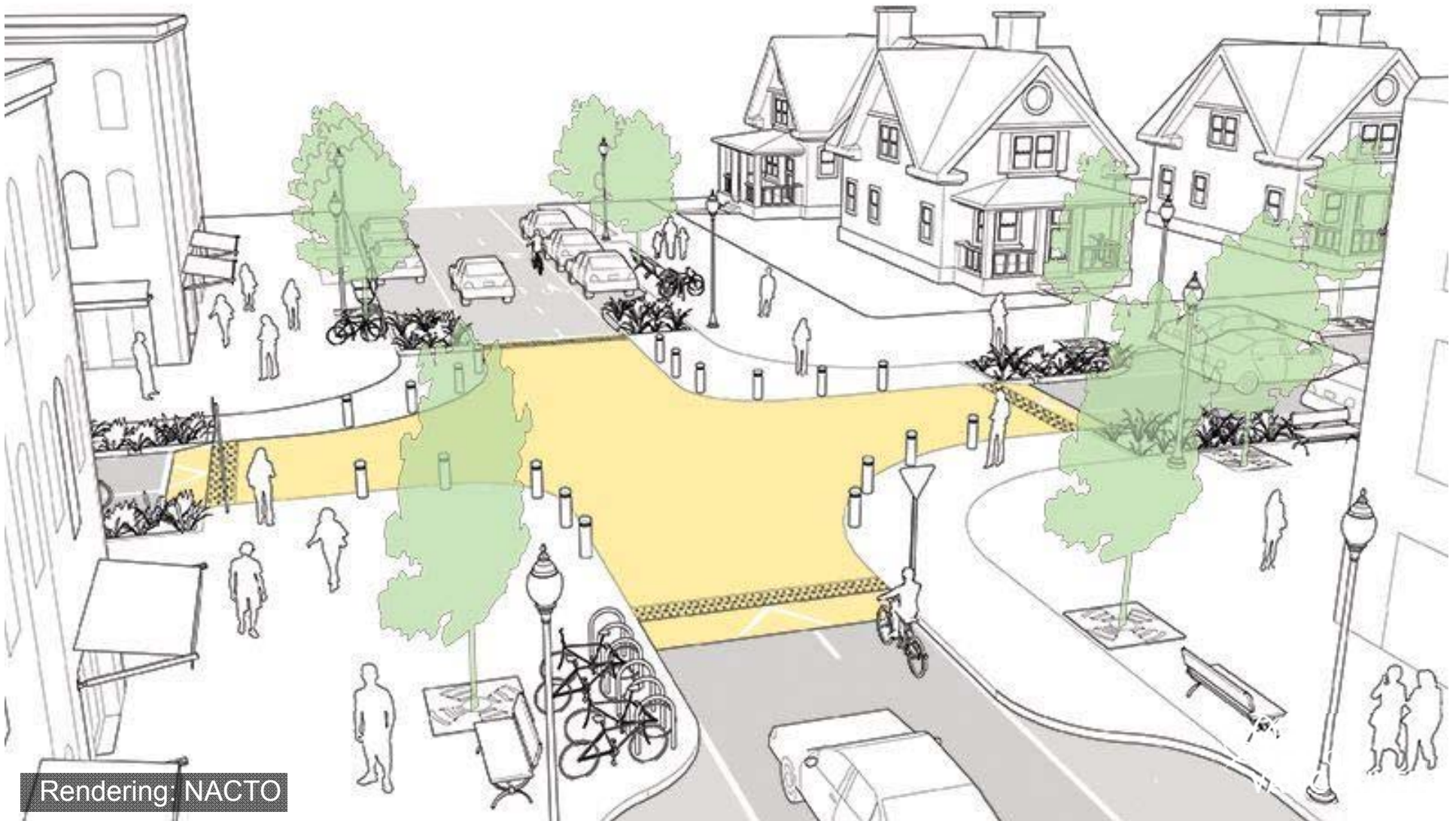
Artist illustration of "Hospital Zone" concept, looking west down 10th Ave from Oak St.

## 2. Improve Pedestrian Safety and Comfort



10<sup>th</sup> Ave Health  
Precinct  
Street  
Improvements

## Raised Intersections at Willow and Heather



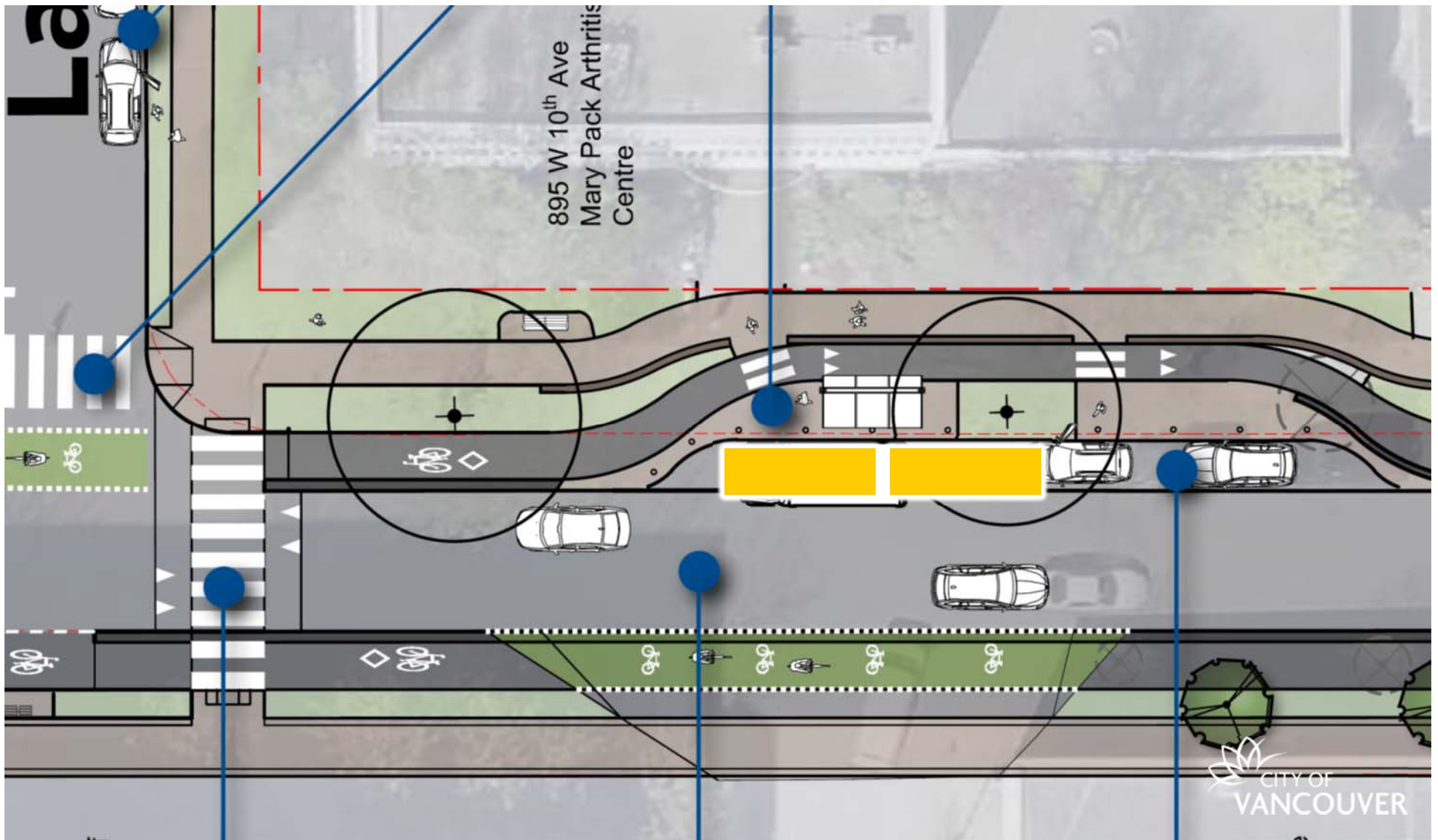
Rendering: NACTO

# 3. Enhance Pick-up / Drop-off Areas



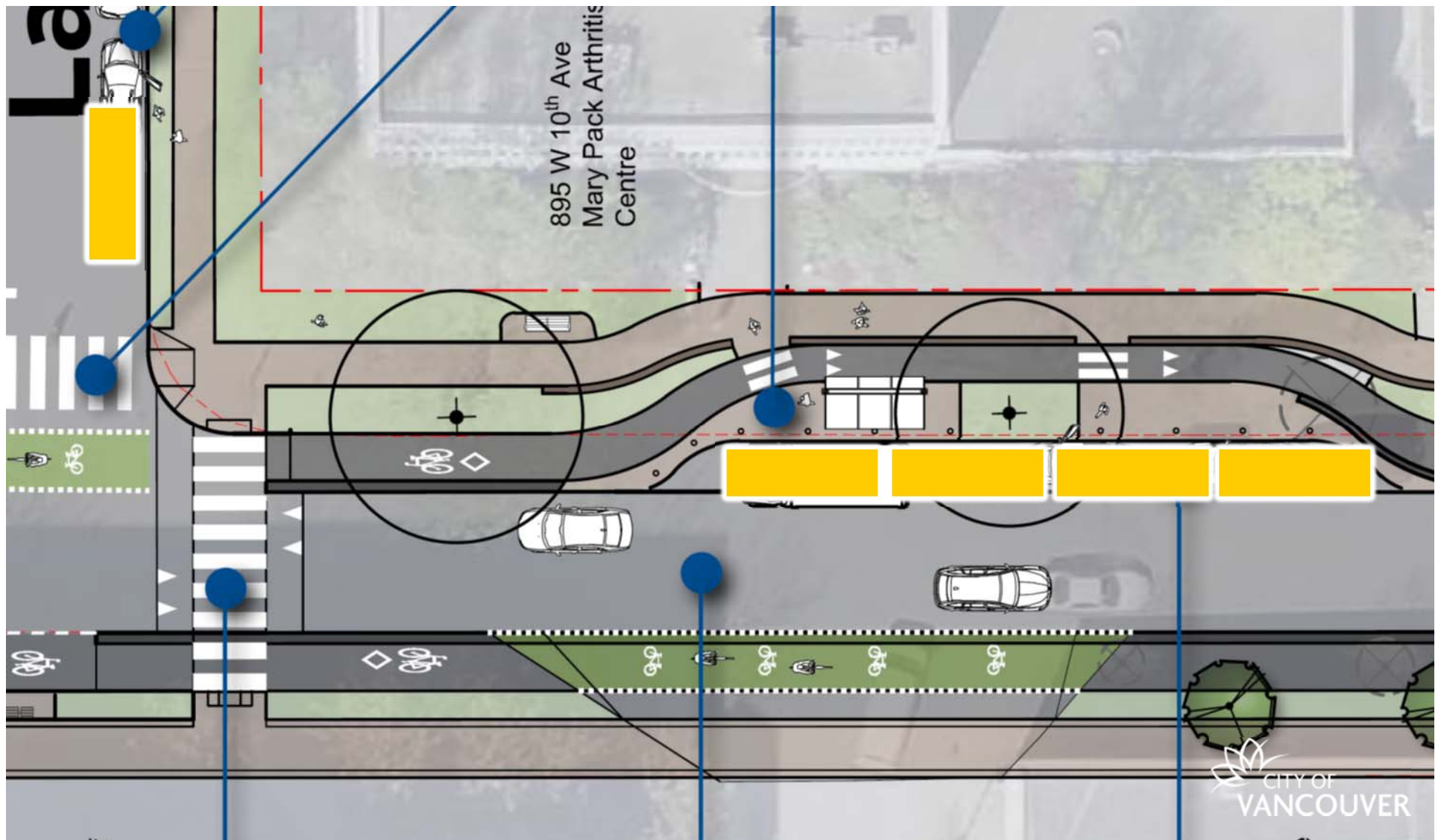
10<sup>th</sup> Ave Health  
Precinct  
Street  
Improvements

# Increased / Re-designed Pick-up / Drop-off



10<sup>th</sup> Ave Health  
Precinct  
Street  
Improvements

# Increased / Re-designed Pick-up / Drop-off

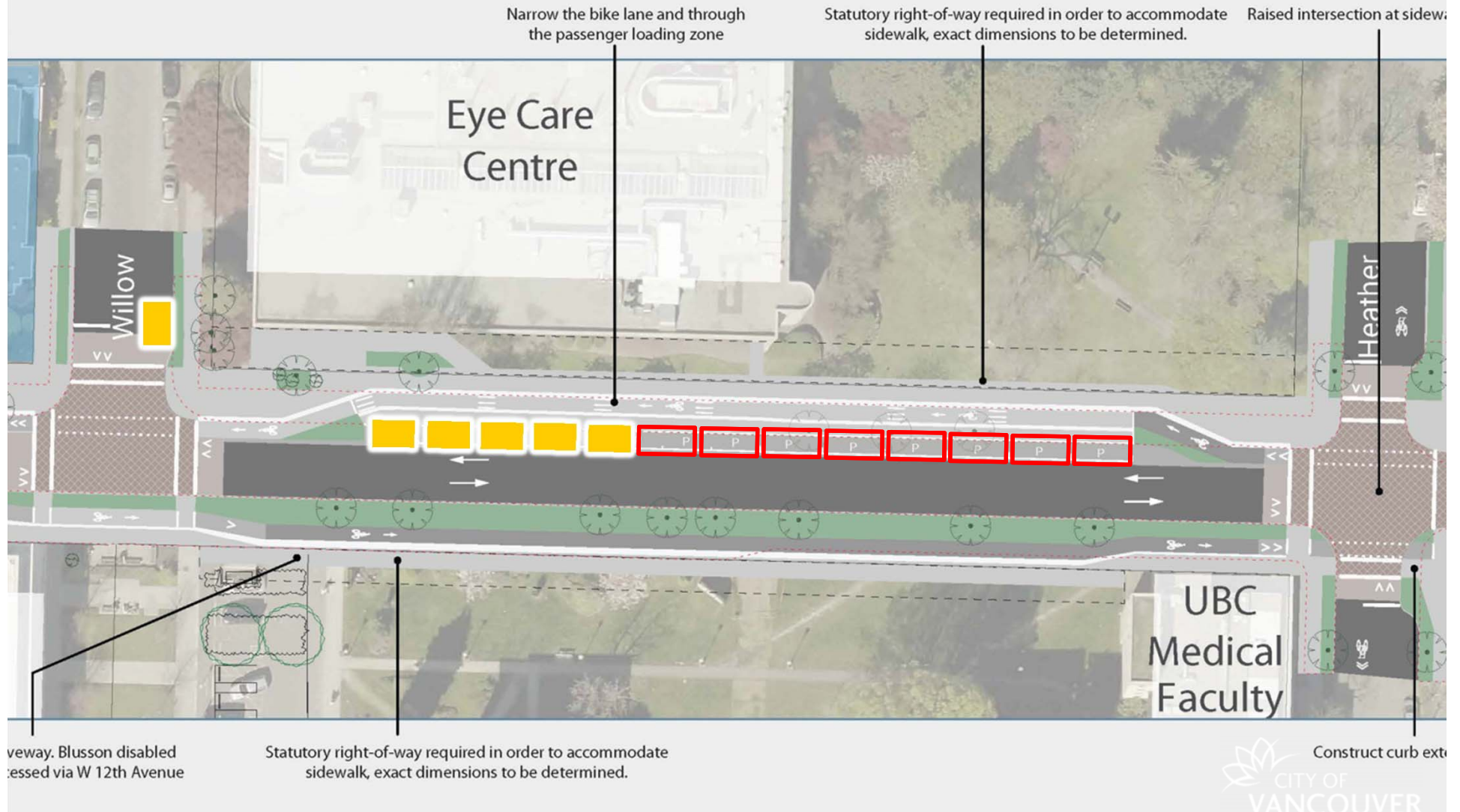




# 4. Increase Parking for Patients with Accessibility Needs

10<sup>th</sup> Ave Health  
Precinct  
Street  
Improvements

# Parking For Patients with Acute Accessibility Needs

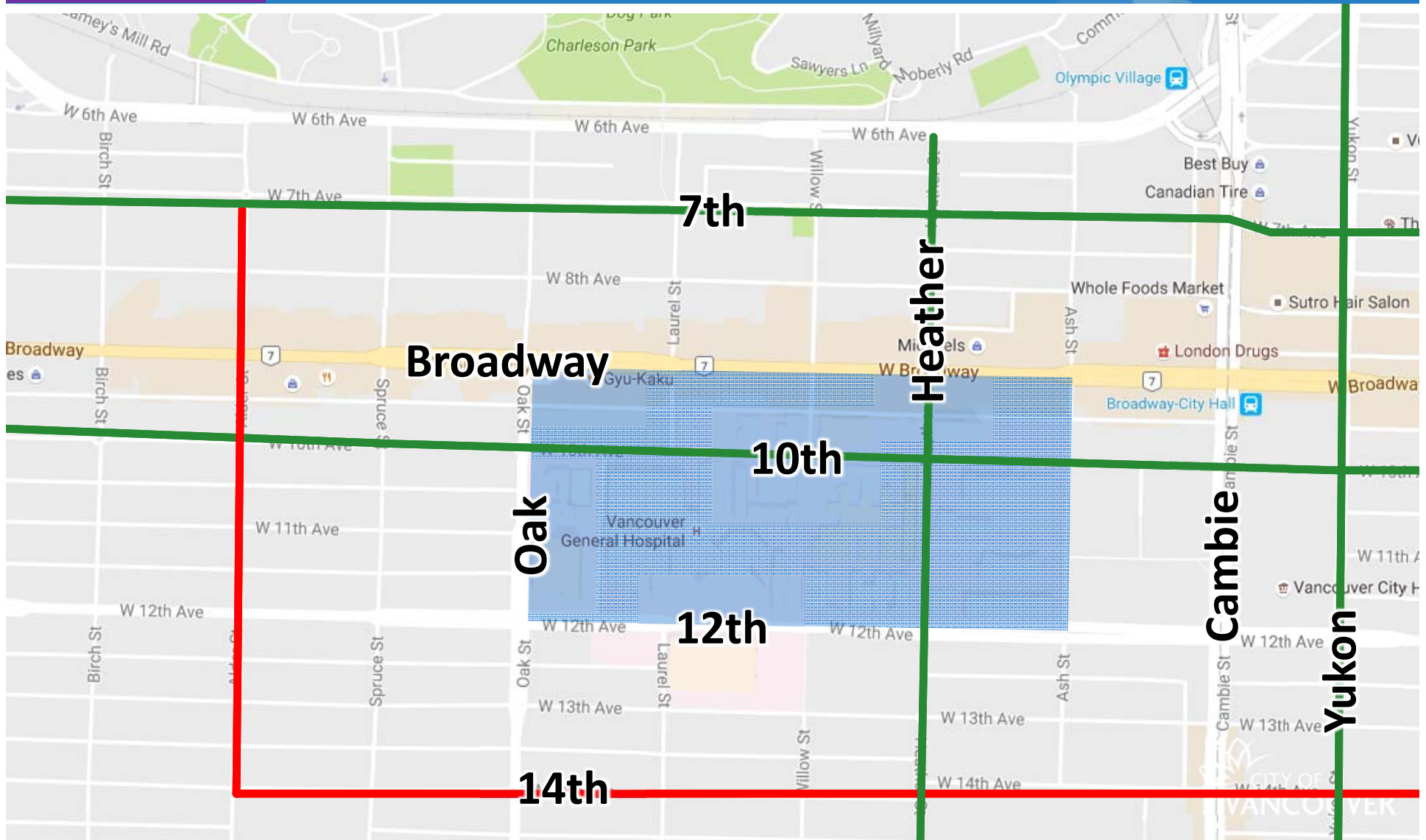




# 5. Improve Alternate Bike Routes

10<sup>th</sup> Ave Health  
Precinct  
Street  
Improvements

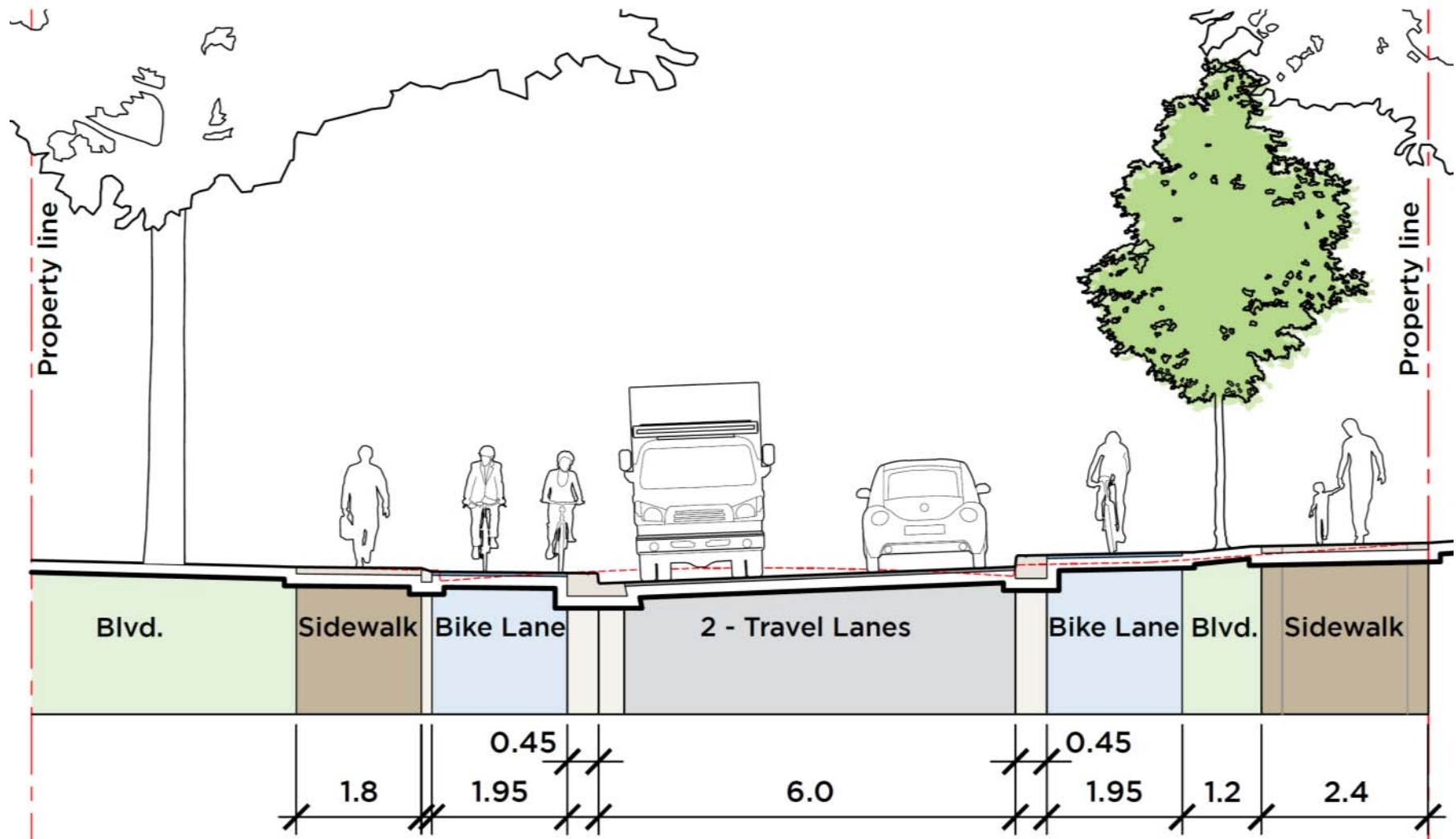
# Improvements to 7th Ave and New Parallel Route on 14th Ave with a North-South Connection West of Oak St.





# 6. Separate Different Modes of Transportation

## Separate Travel Modes

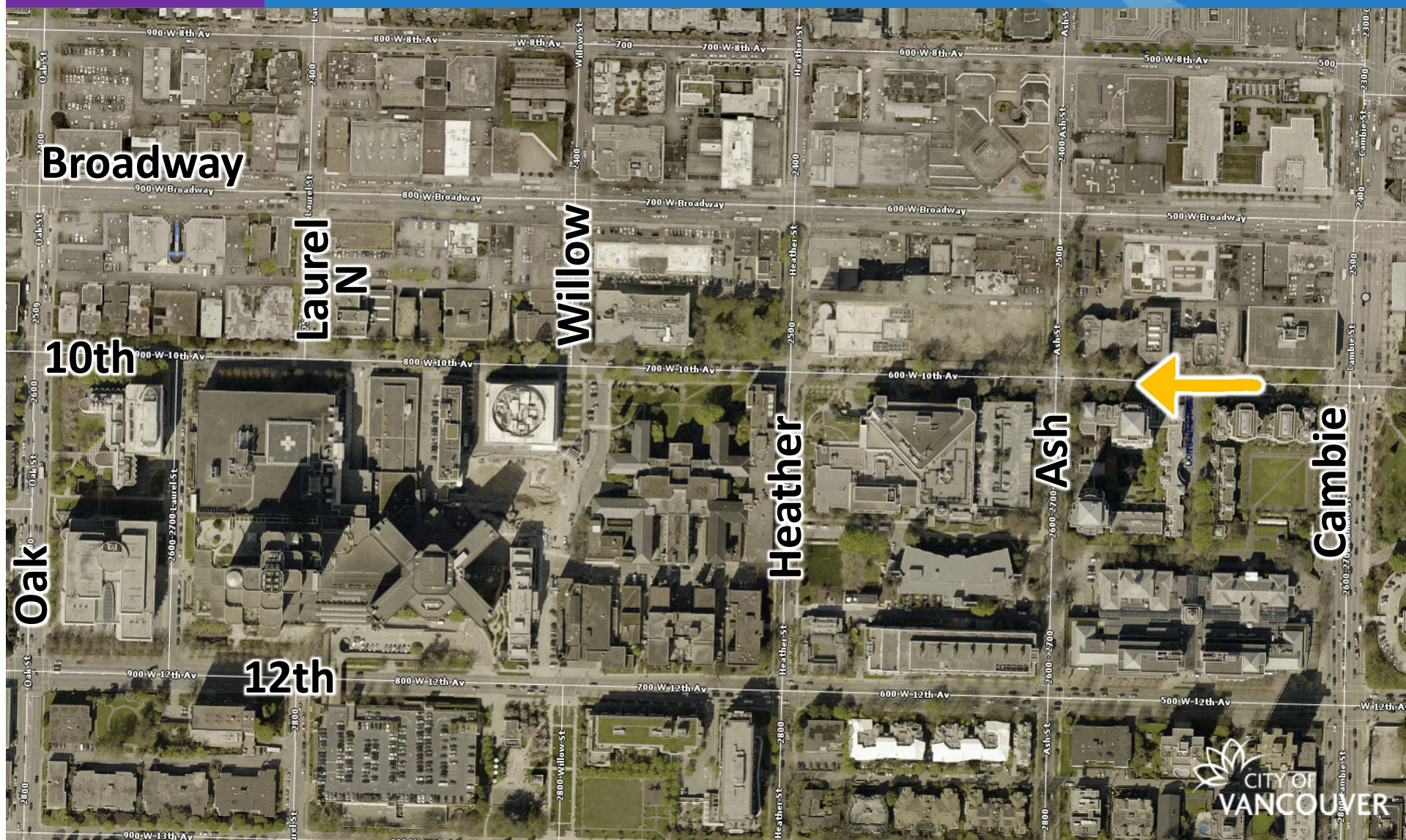




# 7. Convert 10<sup>th</sup> Ave to One-Way Cambie to Ash

10<sup>th</sup> Ave Health  
Precinct  
Street  
Improvements

# One-way Traffic from Cambie St to Ash St.



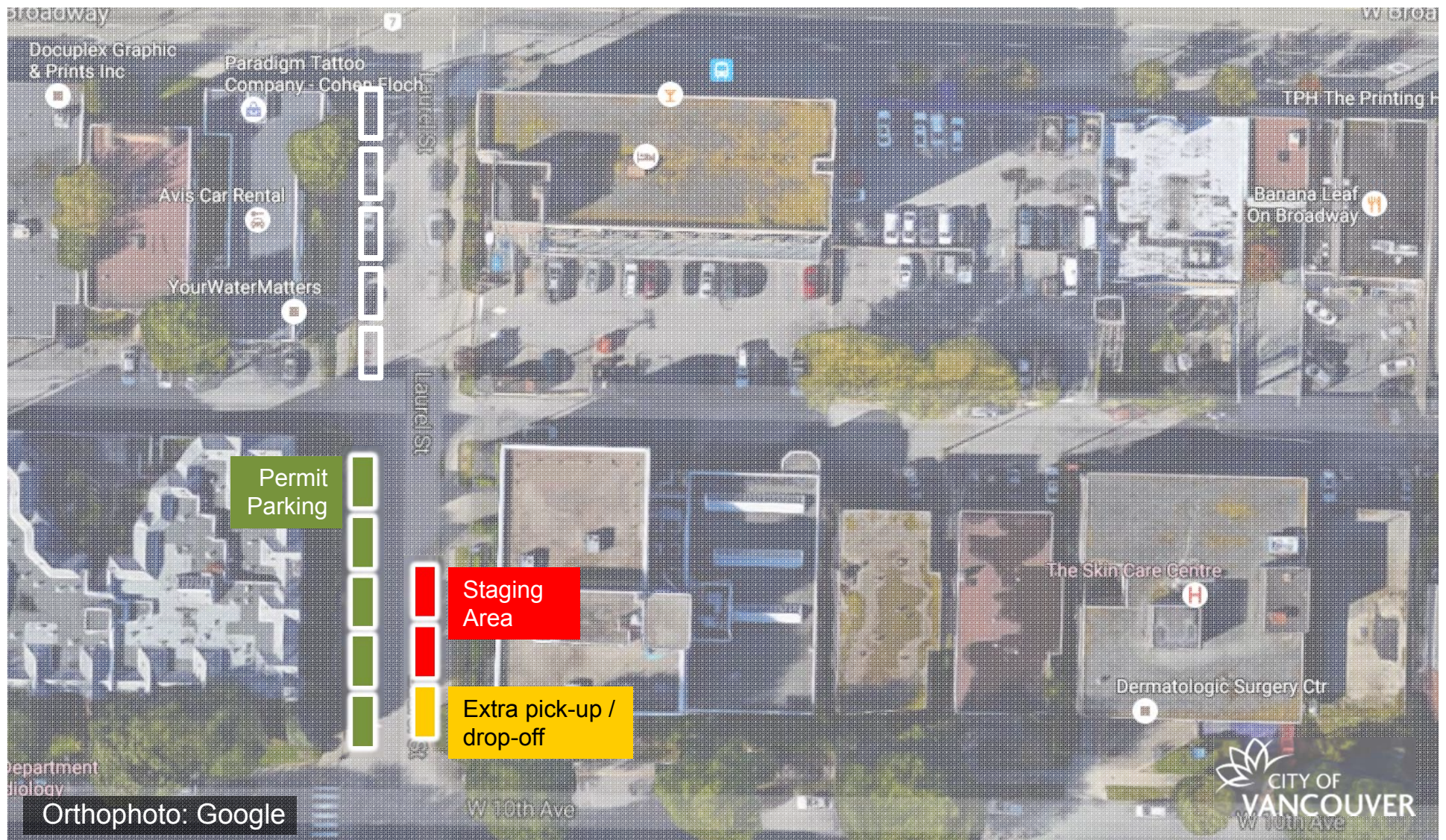


# 8. New Bus Stops and Improved HandyDART Access



## 10<sup>th</sup> Avenue Corridor Project

# Staging Area on Laurel to Wait for Longer Periods (30 minutes for SPARC & HandyDART)





# 9. Adjust Residential Permit Parking

## Adjust Residential Permit Parking

Residential permit  
parking:  
Reduction from 21 to  
17 on-street spaces





# 10. Create Evaluation Committee

10<sup>th</sup> Ave Health  
Precinct  
Street  
Improvements

# Create Evaluation Committee





# Safety implications

There were 69 vehicle collisions reported on 10th Avenue in the Health Precinct that involved people walking or cycling in the past 7 years (2009 to 2015).

**The recommended design would have eliminated or mitigated 70%-90% of these collisions,** including the 1/4 related to on-street parking and 1/4 related to turn conflicts at Oak St and 10th Ave.

*Based on City of Vancouver analysis of detailed descriptions documented in ICBC data that records collisions that involved people walking or cycling on 10th Ave in the Health Precinct.*





# Parking Implications

## Parking Implications

Re-assign parking to those who need it, where they need it:

- +10 disability spaces
- +12 passenger loading (10 min) and vehicle staging spaces (30 min)





## Parking Implications



Collaborate to increase parking  
supply:

- +116 off-street spaces (PHSA)



## Parking Implications

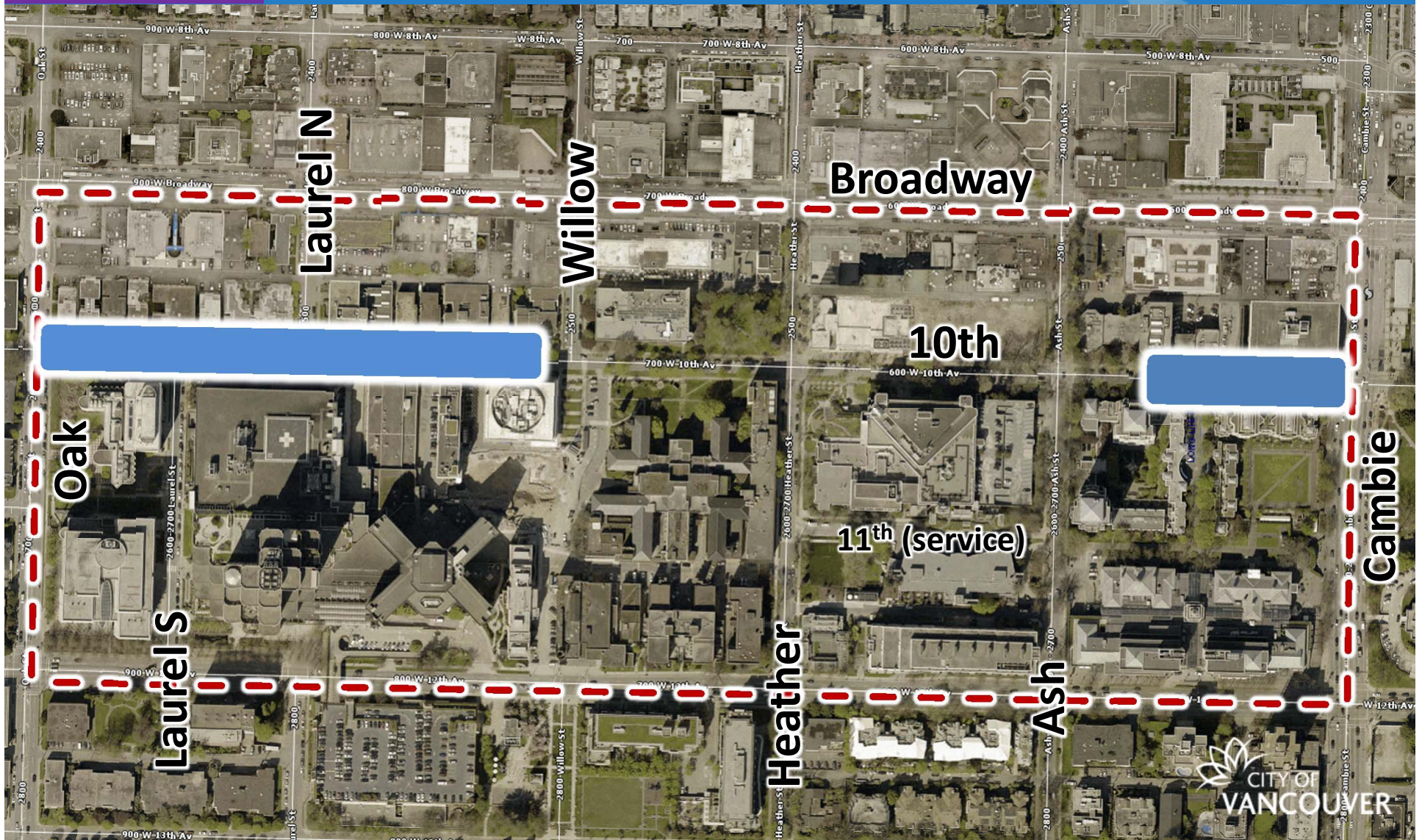
Parking Type	Existing Spaces	Proposed Spaces
Passenger loading and priority vehicle staging area	8	20
Meter parking on 10 <sup>th</sup> Ave – west of Ash St	56 + 1 disability/SPARC	0 + 11 disability/SPARC*
Meter parking on 10 <sup>th</sup> Ave – east of Ash St	21	2
Meter Parking on side streets	80	62
Residential permit parking surrounding the 900 block	21	17
New surface parking lot at Ash St / 10 <sup>th</sup> Ave (by PHSA)	-	116+ (incl. disability parking)
<b>Total</b>	<b>187</b>	<b>228+</b>



# Project Phasing

10<sup>th</sup> Ave Health  
Precinct  
Street  
Improvements

Phase 1





## Tree Canopy Implications: Phase 1

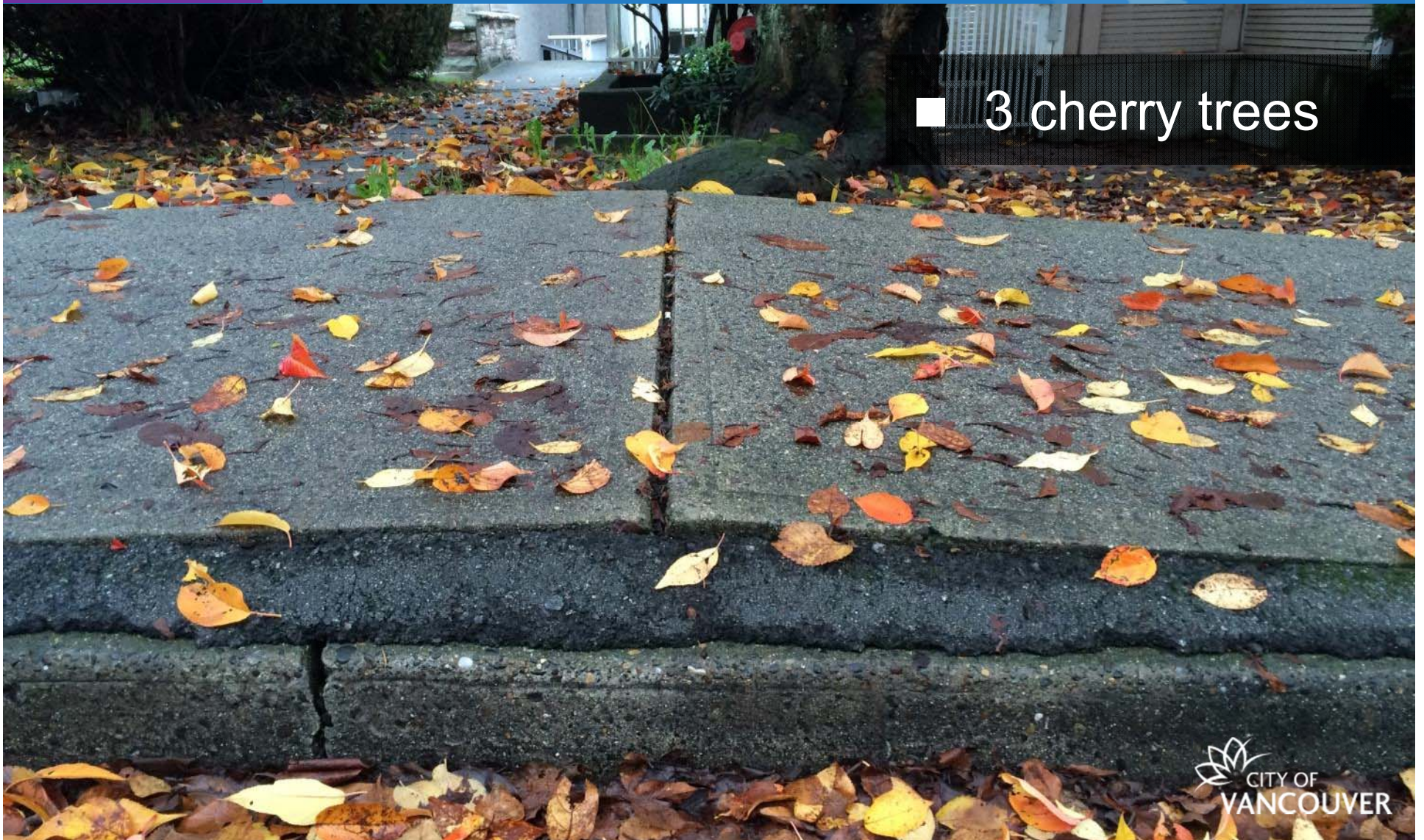
■ 3 cherry trees

Photo: Google StreetView



## Tree Canopy Implications: Phase 1

- 3 cherry trees





## Tree Canopy Implications: Phase 1

- 2 mature beech trees

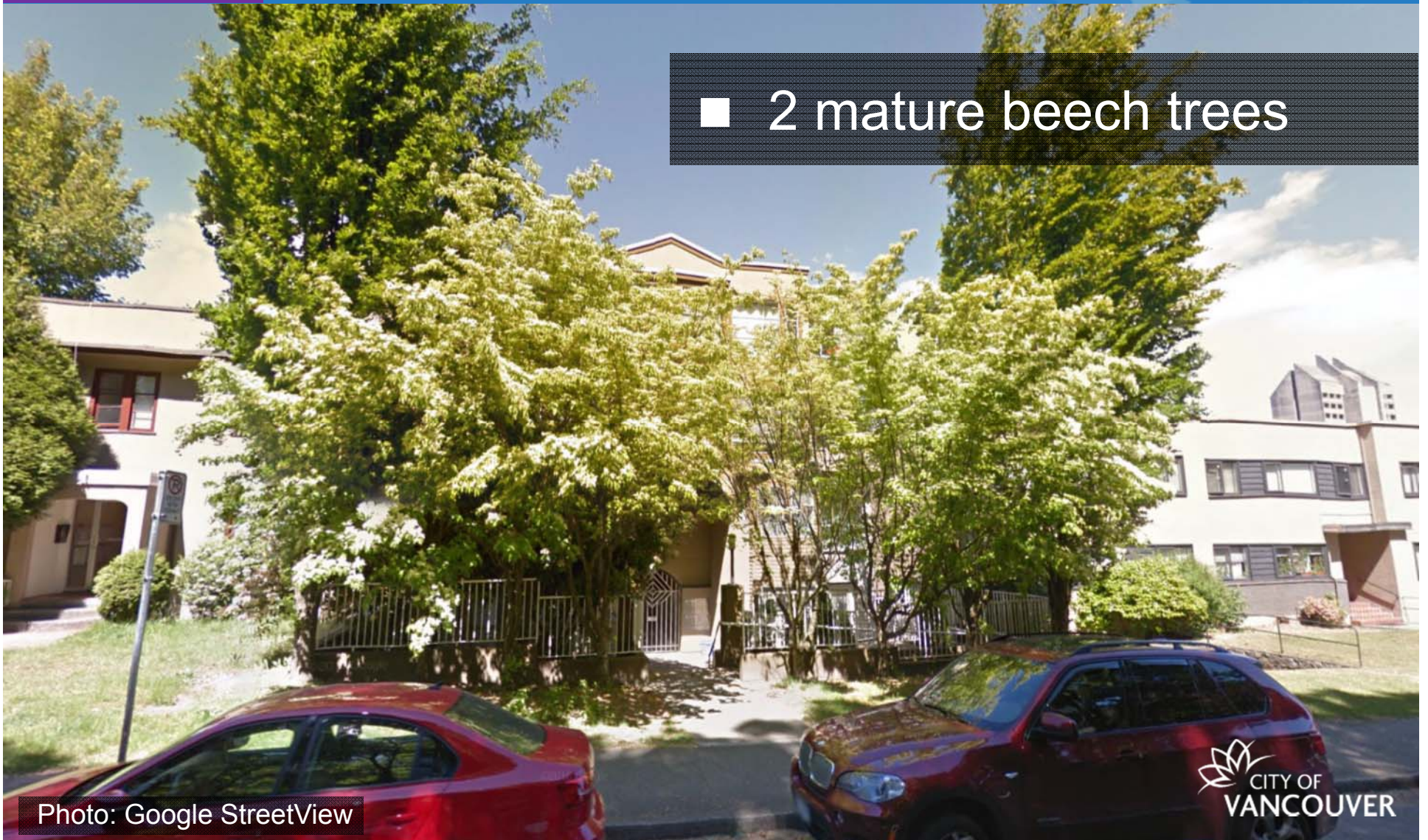


Photo: Google StreetView



## Tree Canopy Implications: Phase 1

- Replanting 15 young trees
- Planting 19 additional new trees



Photo: Google StreetView



# Vancouver Coastal Health/BC Cancer Perspectives

## Importance of Vancouver Coastal Health and BC Cancer Agency in the Health Precinct

- VGH is 2<sup>nd</sup> largest hospital in Canada
- VCC is largest cancer treatment centre in BC
- 90,000 annual visits to Emergency Department
  - 7 ambulance arrivals per hour during peak periods
- 3,800 daily patient visits to VCH health services
- 1,765 physicians
  - 1,400 serve acute care population
  - 200 community physicians, 165 VCC physicians
- 8,140 staff (full-time and part-time, including scientists and researchers at BCCRC)



## Benefits of proposed design

1. Safe patient access, protecting the most vulnerable pedestrians
2. Intuitive and fast ER access
3. Convenient and sufficient parking supply for people with acute accessibility needs
4. Safe pedestrian crossings at intersections and passenger zones
5. Vehicle access for patients and hospital operations
6. Reduced short cutting through the hospital precinct