

800 Robson Plaza Update

Presentation to Council – Dec. 14, 2016

Presented by:

Margaret Wittgens

Director of Public Space and Street Use



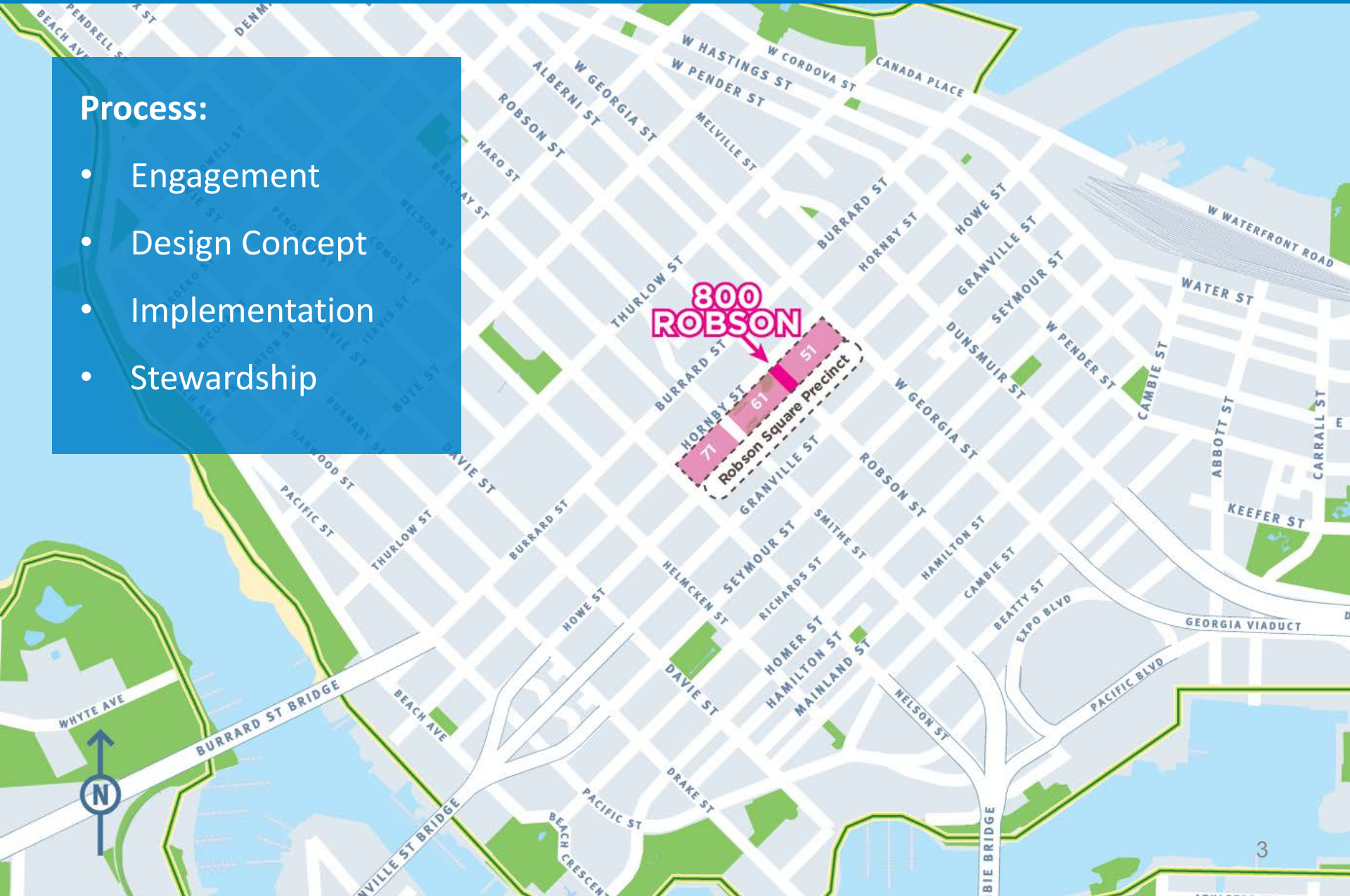
800 Robson is:

- A city-serving public space, with high social, cultural and political value
- A regional destination in the heart of the city
- A place for expression, relaxation, and enjoyment
- A key connector between business and neighbourhoods

Update to Council

Process:

- Engagement
- Design Concept
- Implementation
- Stewardship



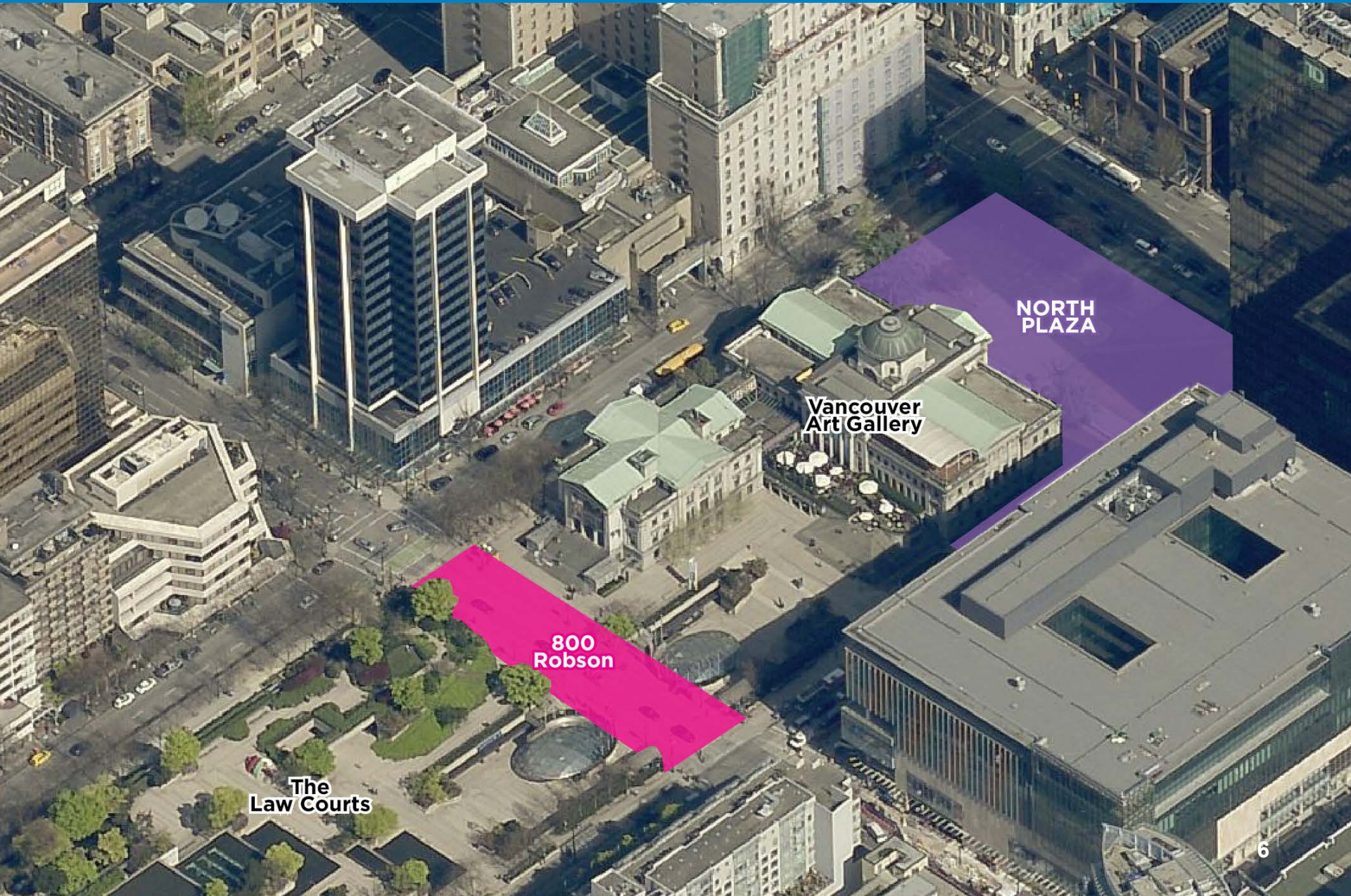
Background



Background



Background



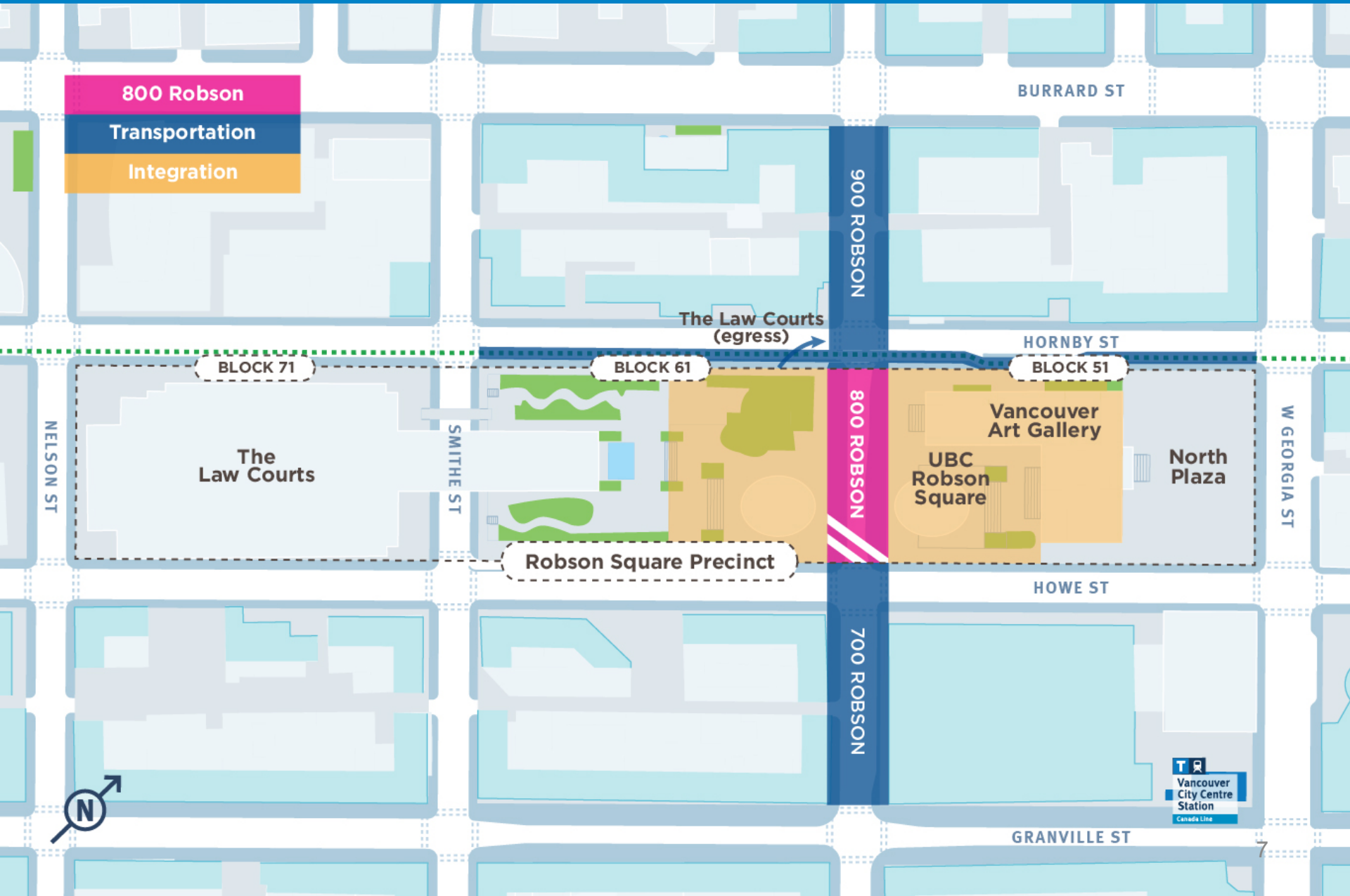
**NORTH
PLAZA**

**Vancouver
Art Gallery**

**800
Robson**

**The
Law Courts**

Scope





- Open Houses at 800 Robson
- 2,200 surveys completed
- 20 key area stakeholder groups



- Level surface, flexible

- Reinforce architectural and landscape aesthetic
- Unify design elements





- Corridor connecting businesses, neighbourhoods, and civic institutions





- Safe, secure, well-maintained and managed throughout the year



- Dynamic space that attracts people, activities, and gatherings

The Vancouver International Jazz Festival

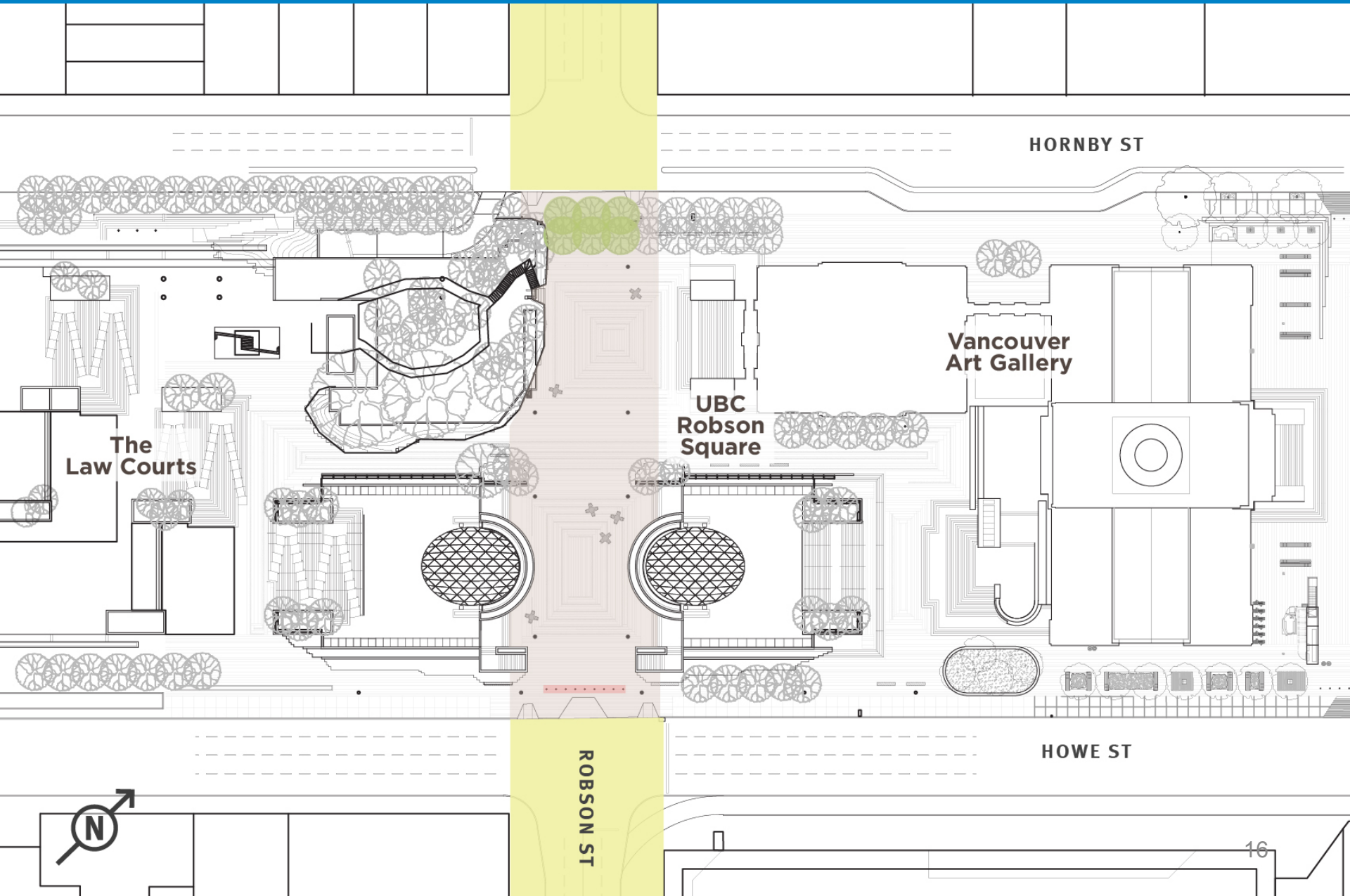


International Pillow Fight Vancouver

Photo Credit: GoToVan



Emerging Concept



The Law Courts

UBC Robson Square

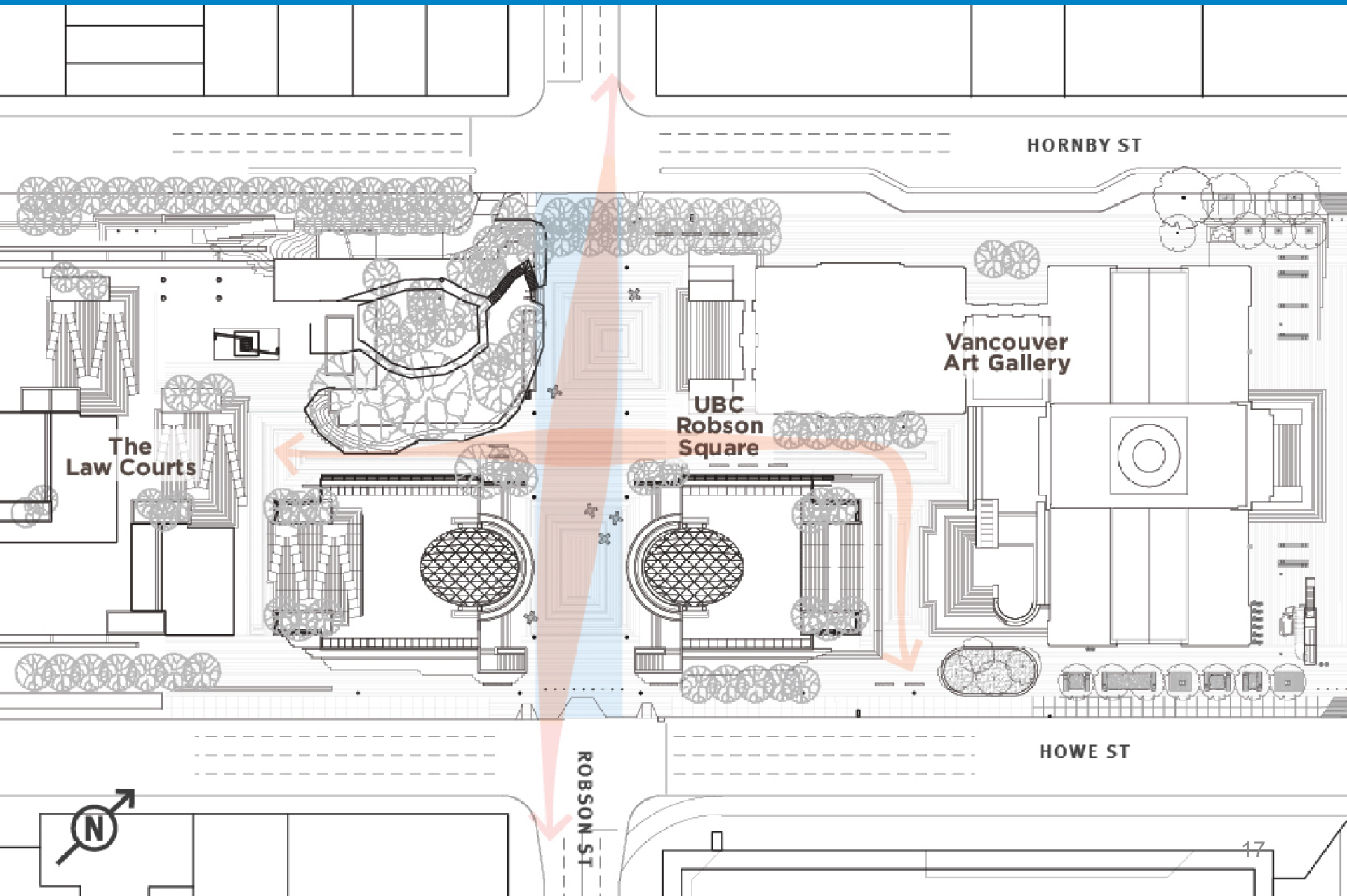
Vancouver Art Gallery

HORNBY ST

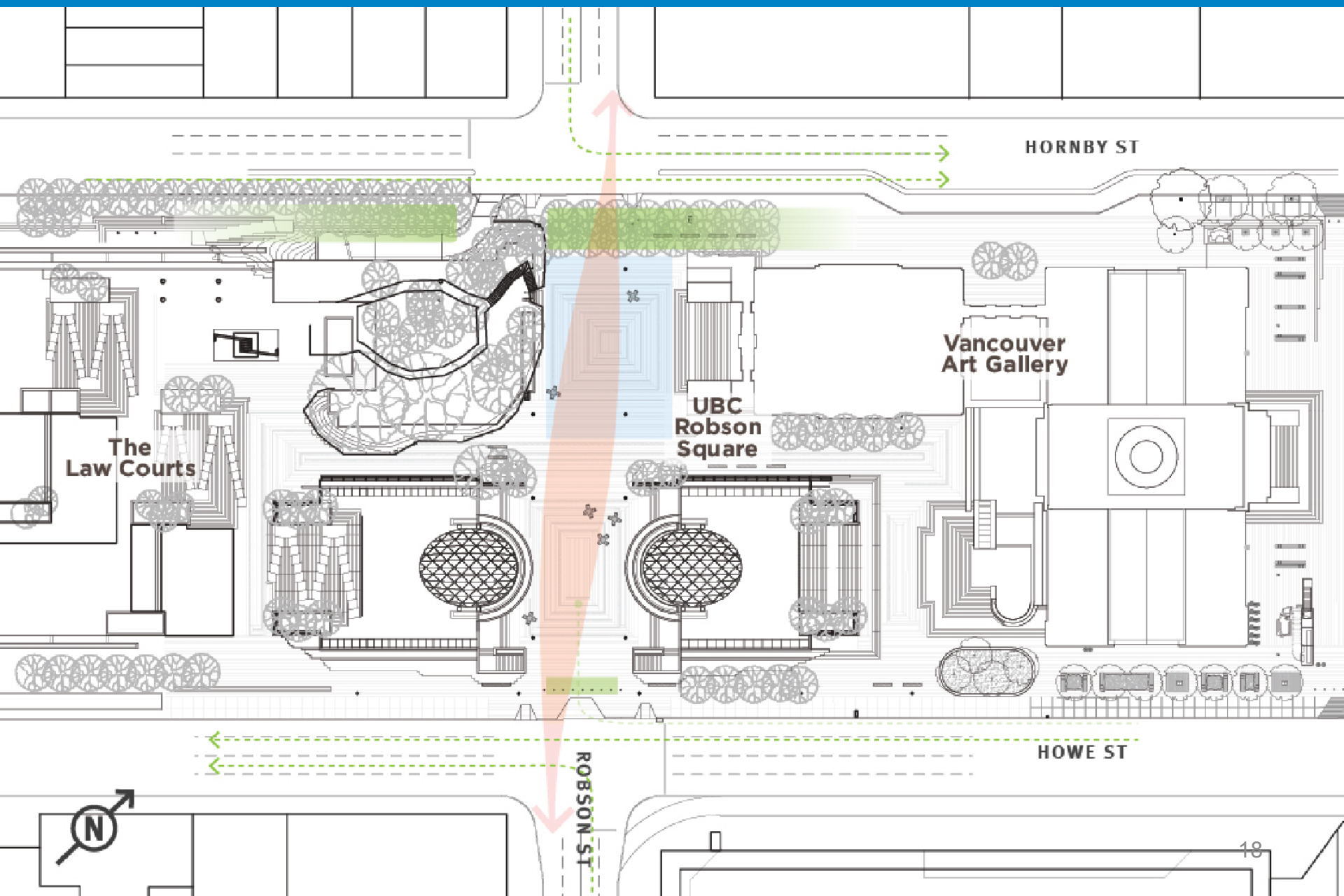
HOWE ST

ROBSON ST

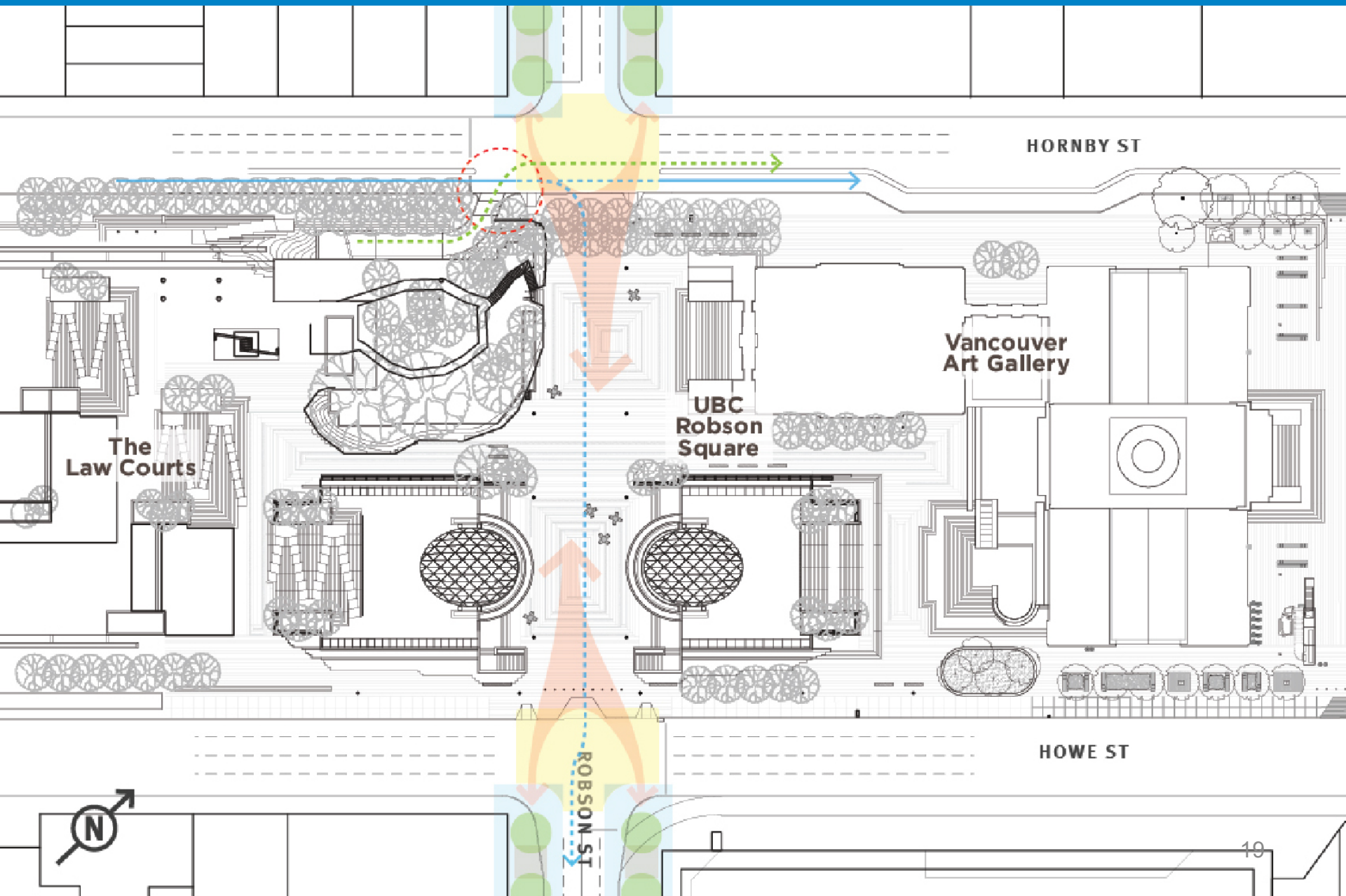
Design Themes – Levelling the Street



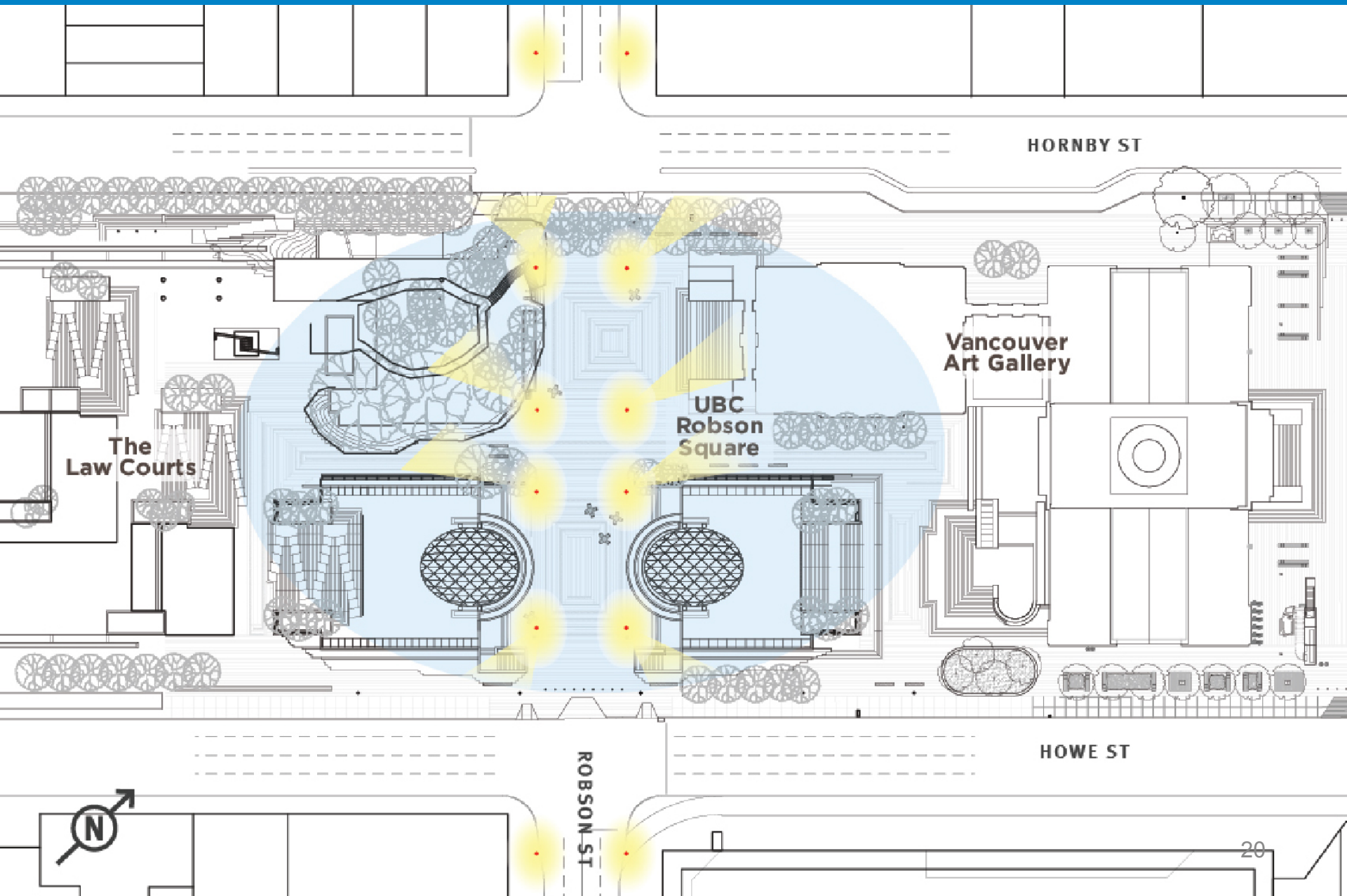
Design Themes – Defining the Block Ends



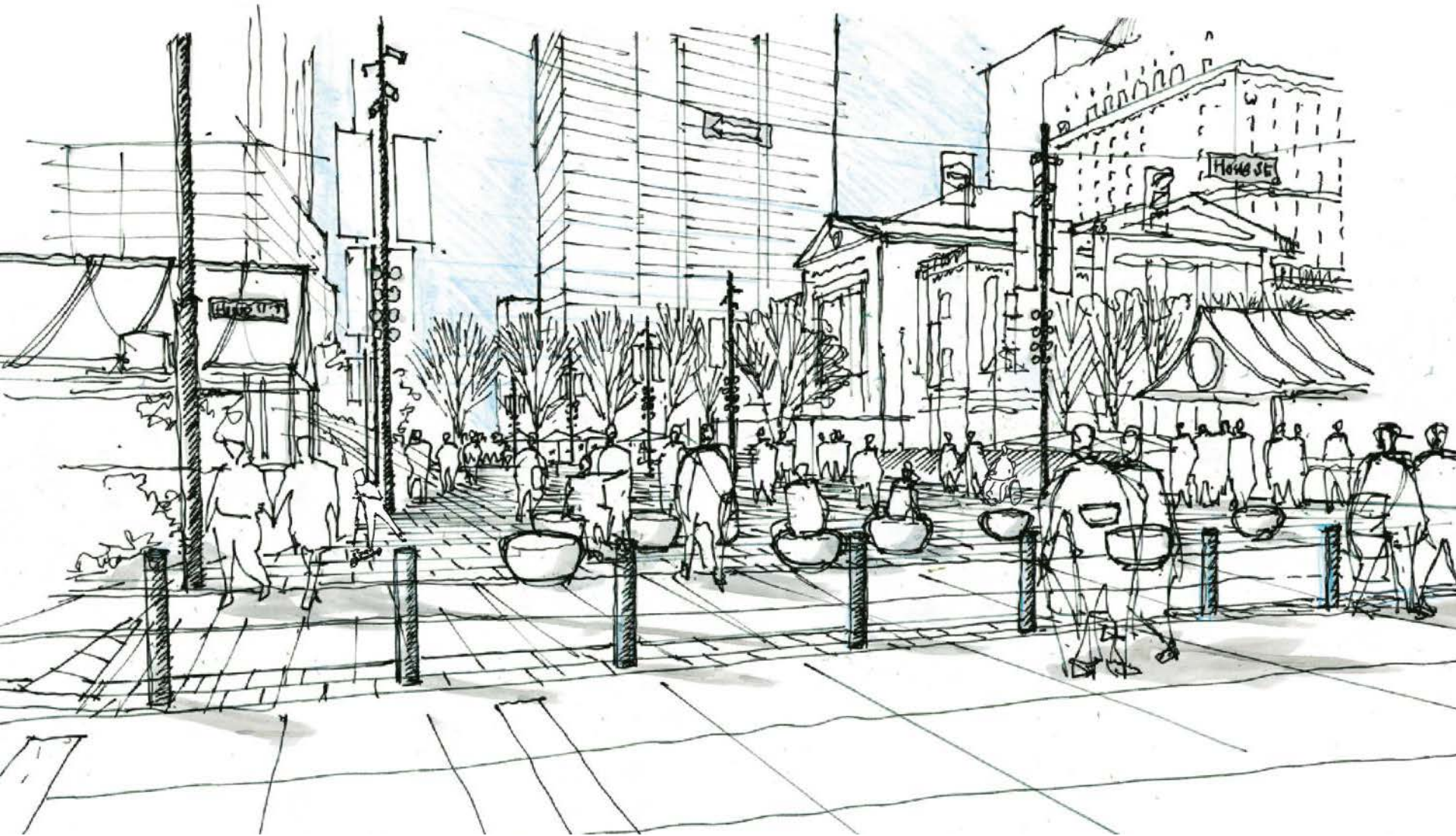
Design Theme – Improving Connections



Design Themes – Additional Features



Emerging Concept – Robson & Howe

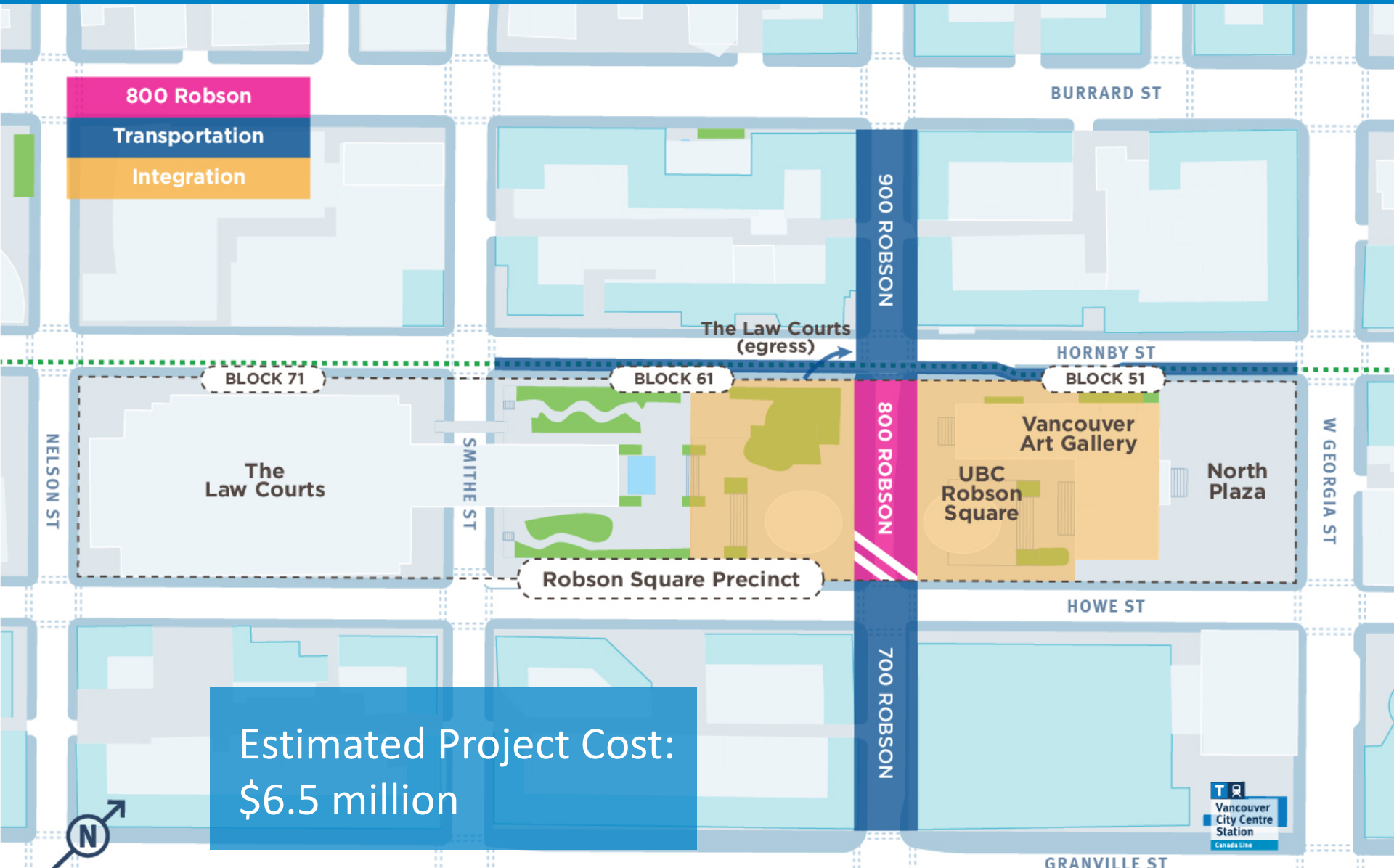


Emerging Concept – 800 Robson

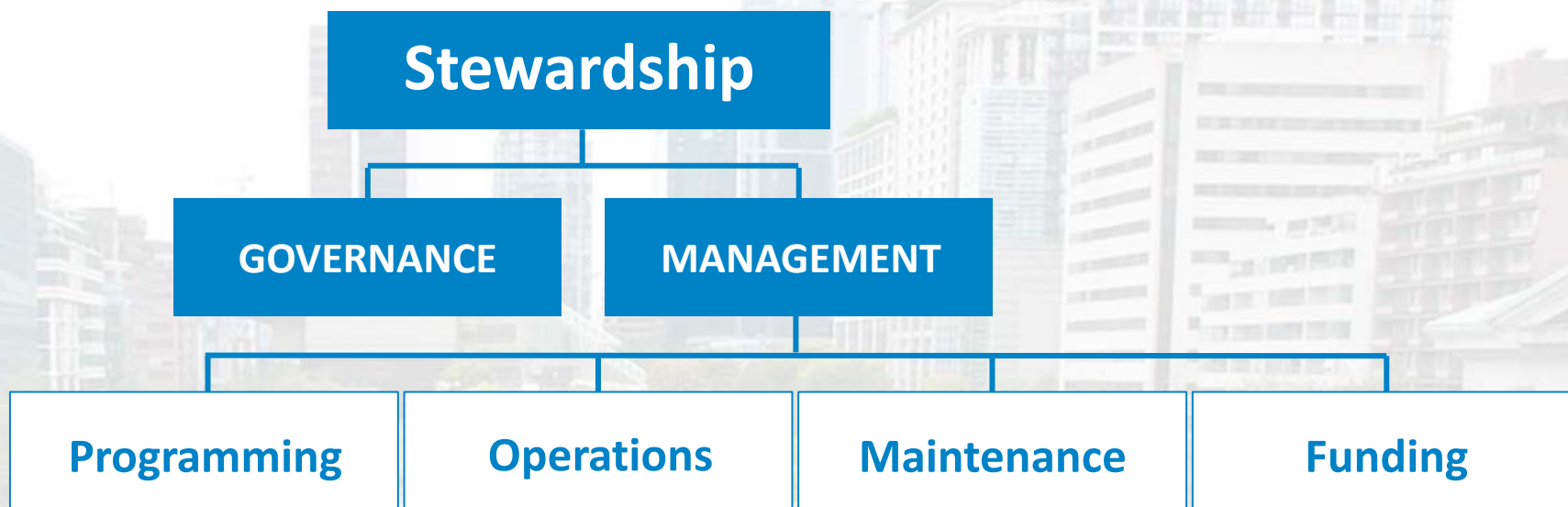


Project Cost

800 Robson
Transportation
Integration



Estimated Project Cost:
\$6.5 million





Key Considerations

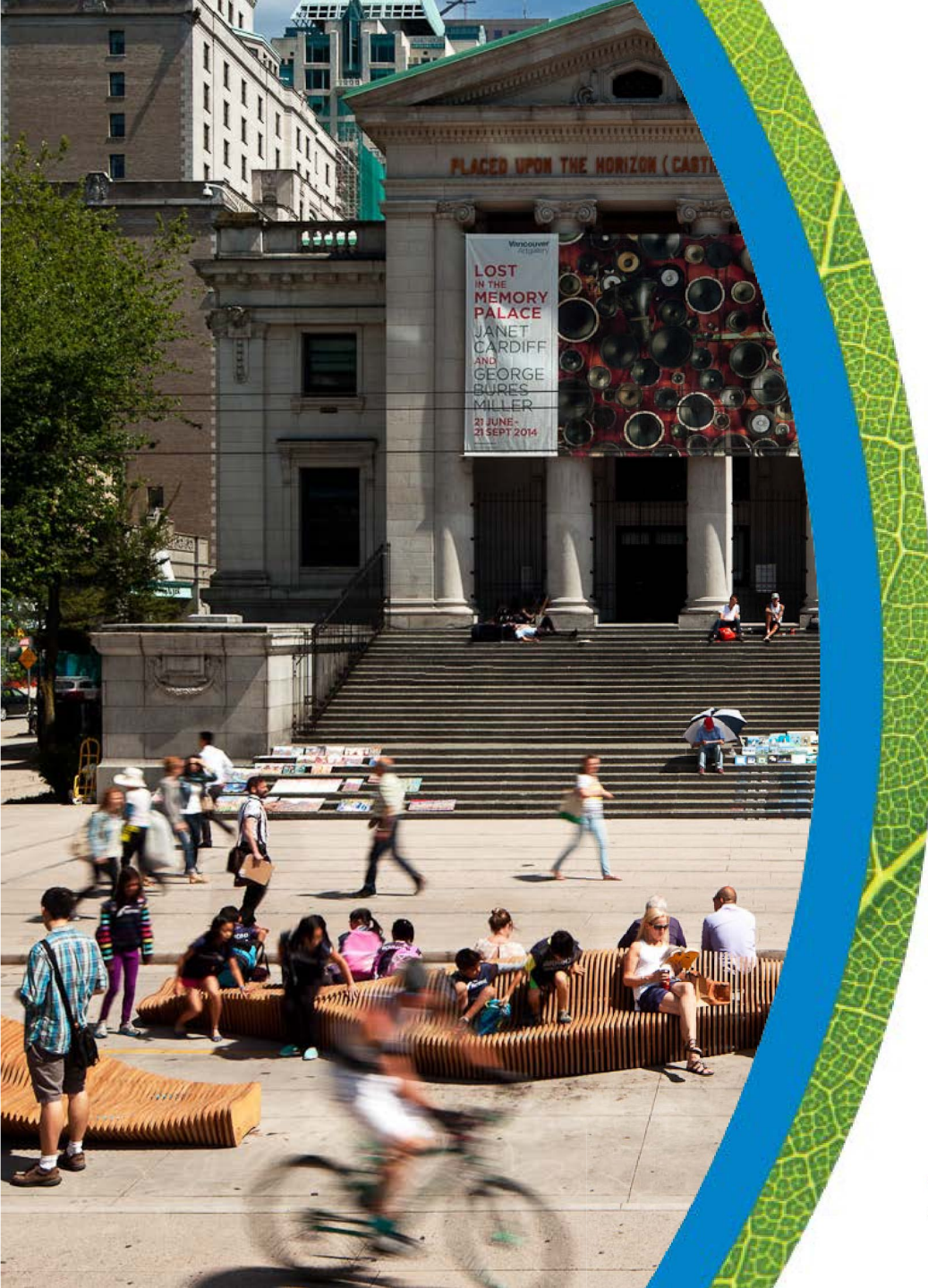
- Landownership and Lease Agreements
- Programming Vision
- Infrastructure Management
- Operations, Security, and Maintenance
- Financial, Environmental, and Social Sustainability

Expected Implementation:

- Continued Engagement through Detailed Plaza Design
- Phase I Construction (commencing spring 2017)
- Phase II Construction to follow
- Stewardship Strategy Development



Next Steps

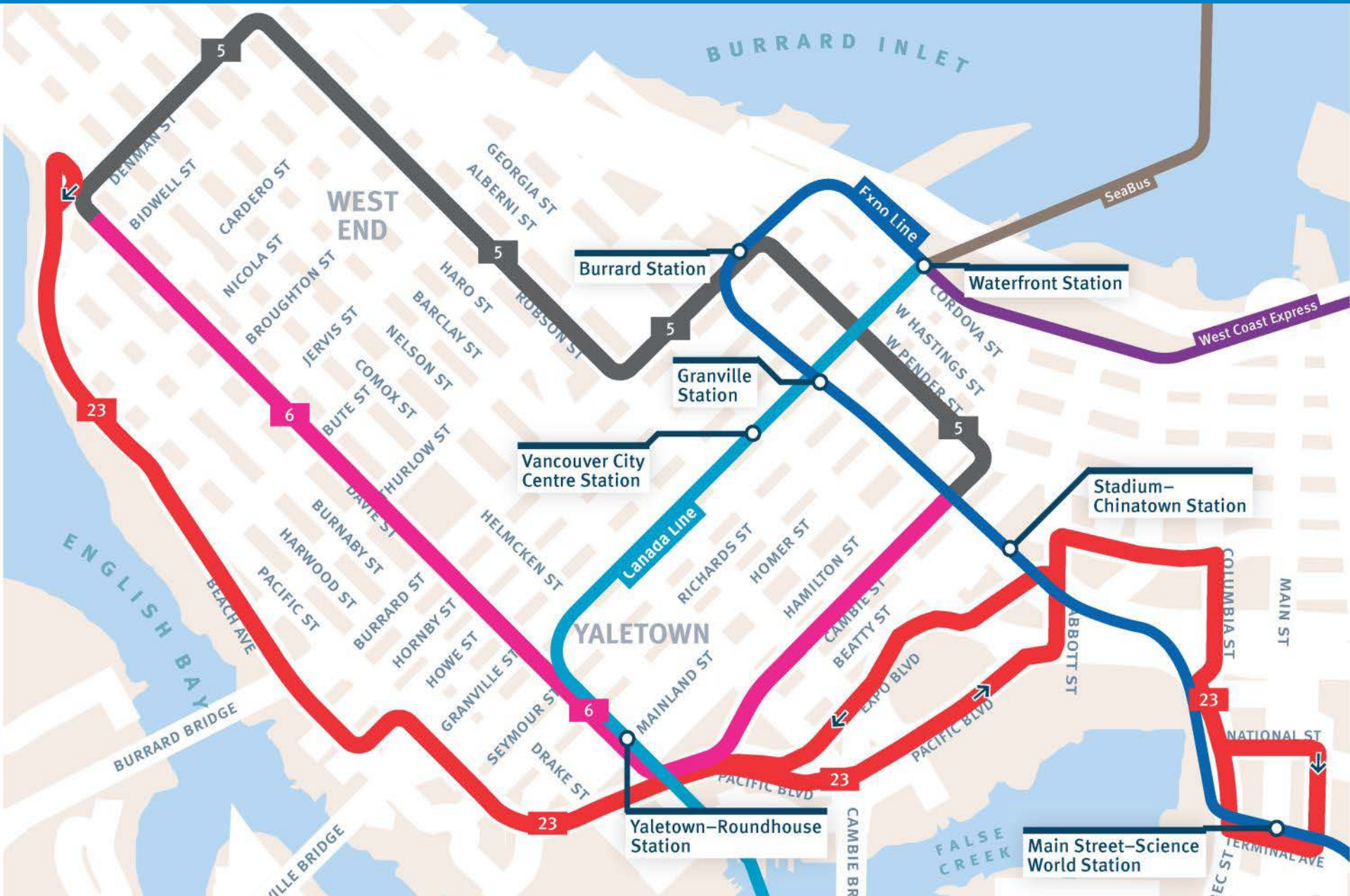


PLACED UPON THE HORIZON (CAST)

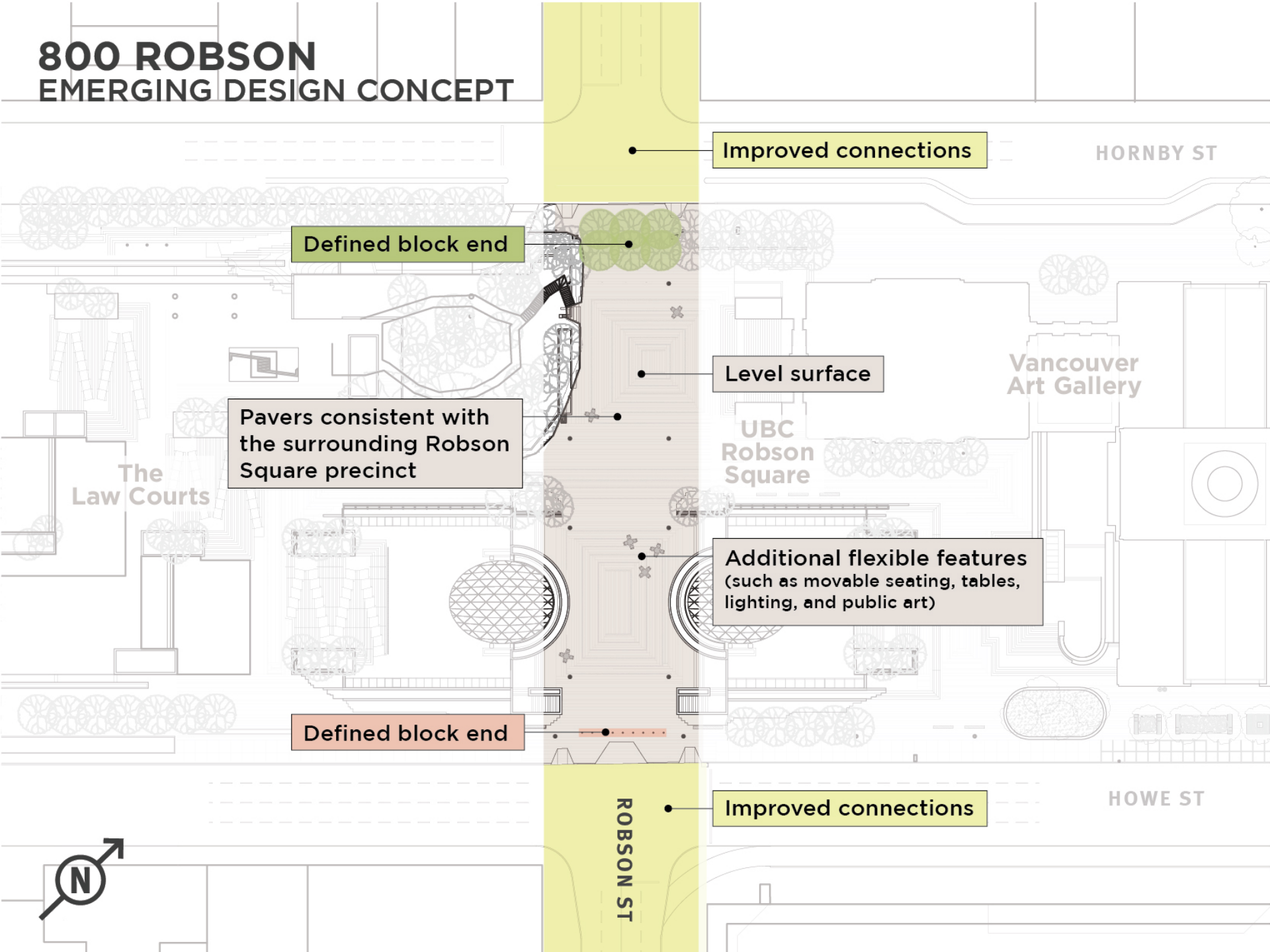
Vancouver Art Gallery
**LOST
IN THE
MEMORY
PALACE**
JANET
CARDIFF
AND
GEORGE
BURES
MILLER
21 JUNE -
21 SEPT 2014

Reference Slides

Transit Routes – December 19



800 ROBSON EMERGING DESIGN CONCEPT



Improved connections

HORNBY ST

Defined block end

Level surface

Vancouver Art Gallery

Pavers consistent with the surrounding Robson Square precinct

UBC Robson Square

Additional flexible features (such as movable seating, tables, lighting, and public art)

The Law Courts

Defined block end

Improved connections

HOWE ST

ROBSON ST

