



# Metro Vancouver Update

CITY OF VANCOUVER COUNCIL – NOVEMBER 30, 2016

**Greg Moore**

CHAIR, METRO VANCOUVER BOARD OF DIRECTORS

**Raymond Louie**

VICE-CHAIR, METRO VANCOUVER BOARD OF DIRECTORS

**Carol Mason**

COMMISSIONER/CHIEF ADMINISTRATIVE OFFICER



**metrovancover**  
SERVICES AND SOLUTIONS FOR A LIVABLE REGION

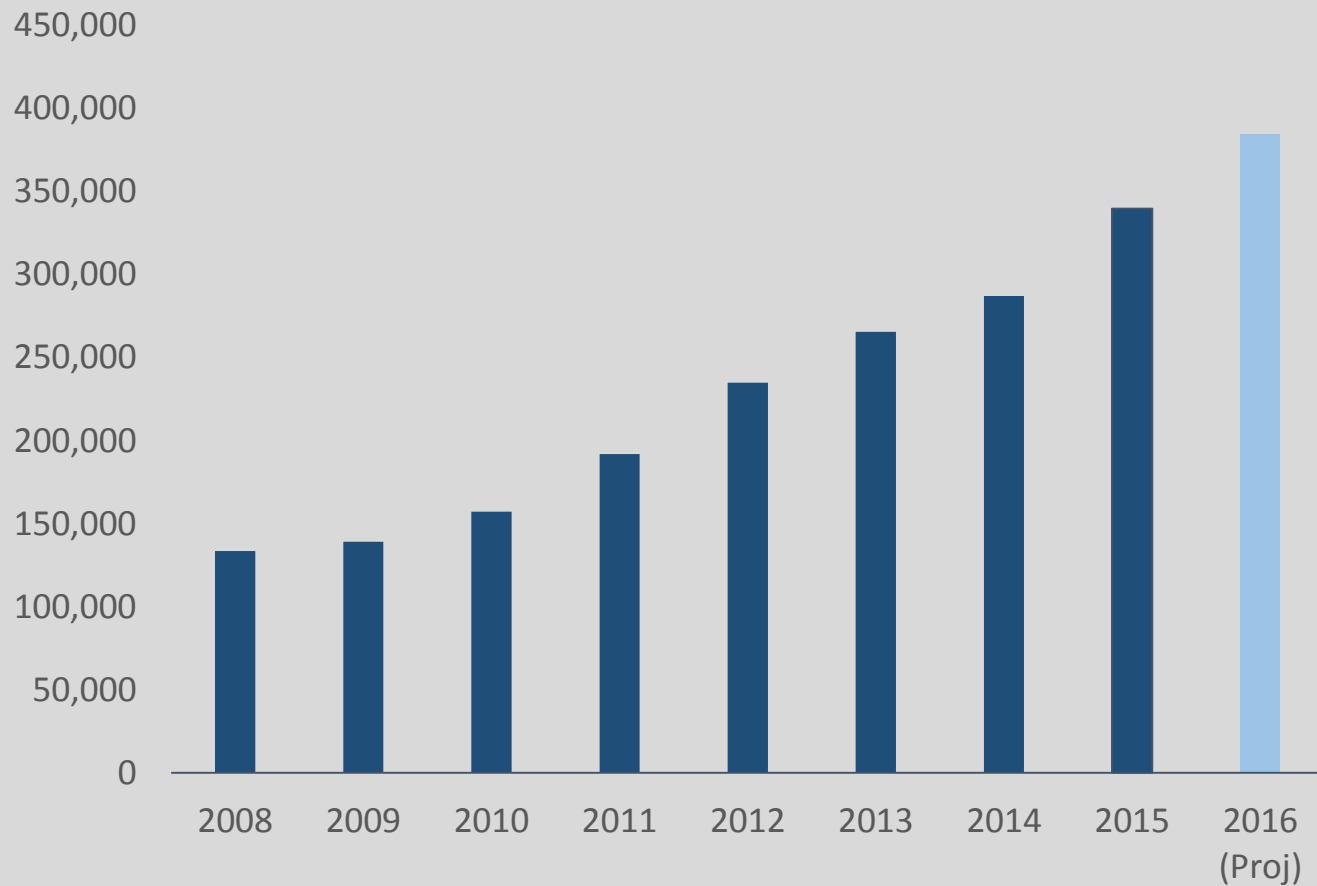
1. Waste reduction strategies
2. Water/liquid waste projects
3. Affordable housing
4. Metro 2040 update
5. Sustainability Innovation Funds
6. Questions

## Agenda



Waste reduction strategies

# Annual Tonnes of Organics Processed in Metro Vancouver







# APPLE LOVERS hate waste

Search...

## Ready to try something new?

Meal planning is the best way to reduce food waste in your home, saving you up to \$700 a year on your grocery bills. We can help.




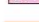




We've got dozens of recipes to whet your appetite - and help you get to the food bank.

Love Food Hate Waste Hack 2



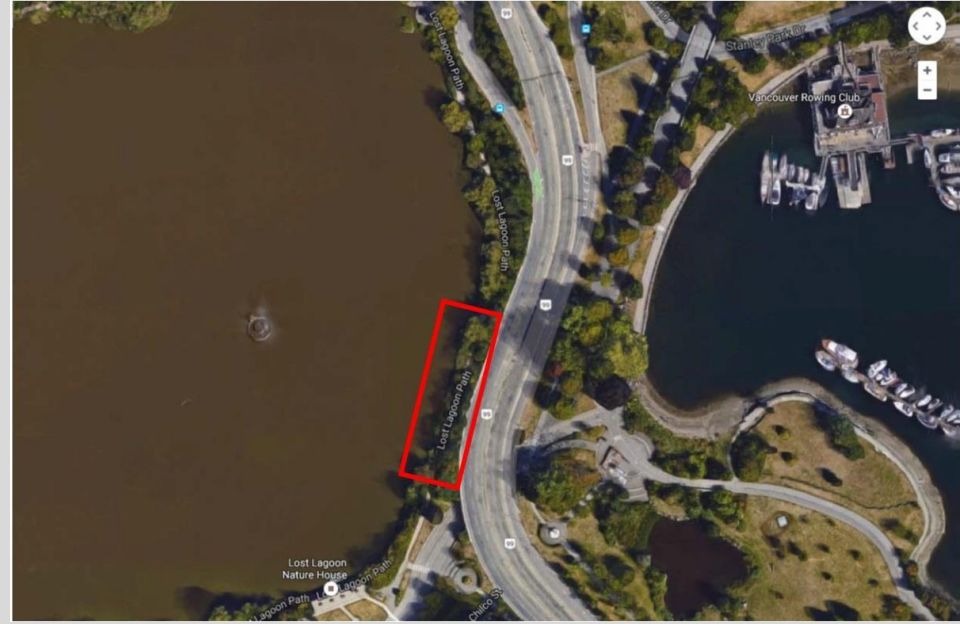
# Waste reduction strategies

# MV Water & Sewer Facilities Within the City of Vancouver

- Legend**
-  MV Water Pump Station
  -  MV Water Reservoir
  -  MV Sewer Pump Station
  -  Iona Island WWTP
  -  MV Sewer Main
  -  MV Water Main
  -  Abandoned Water Main
  -  Proposed Water Main







Agencies involved:

- Metro Vancouver • City of Vancouver • MoTI

Water Services – Capilano No. 4 repairs, Aug. 2016



Drinking water for a growing region

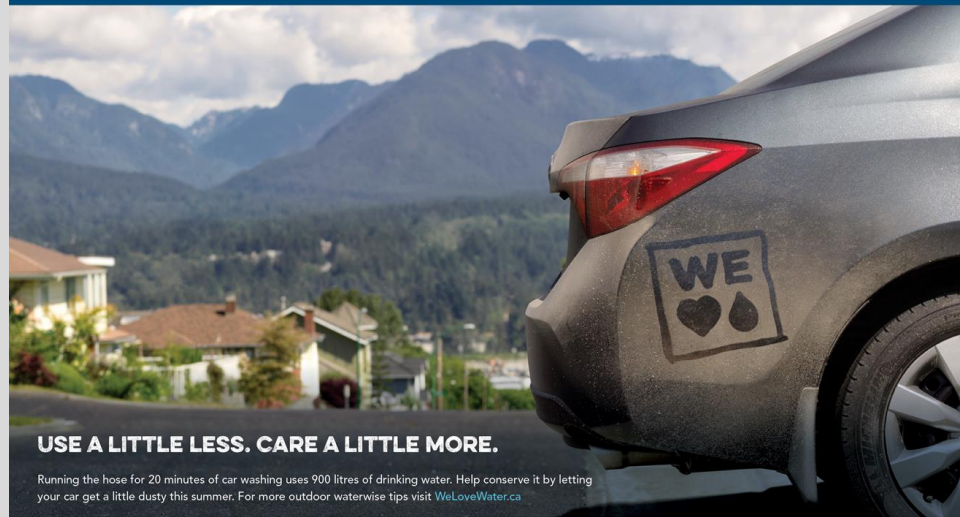




**DON'T JUDGE A HEALTHY LAWN BY ITS COLOUR.**

A browning lawn is a sign of summer. Watering one hour per week is all you need to keep it healthy. For more outdoor waterwise tips visit [WeLoveWater.ca](http://WeLoveWater.ca)

SERVICES AND SOLUTIONS FOR A LIVABLE REGION



**USE A LITTLE LESS. CARE A LITTLE MORE.**

Running the hose for 20 minutes of car washing uses 900 litres of drinking water. Help conserve it by letting your car get a little dusty this summer. For more outdoor waterwise tips visit [WeLoveWater.ca](http://WeLoveWater.ca)

SERVICES AND SOLUTIONS FOR A LIVABLE REGION

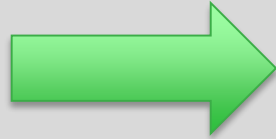
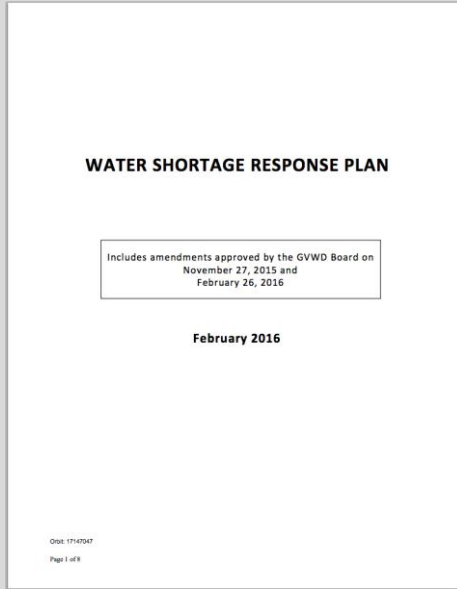


Every two average days, Metro Vancouver residents use enough water

**TO FILL BC PLACE**

**In the summer, this can nearly double.**





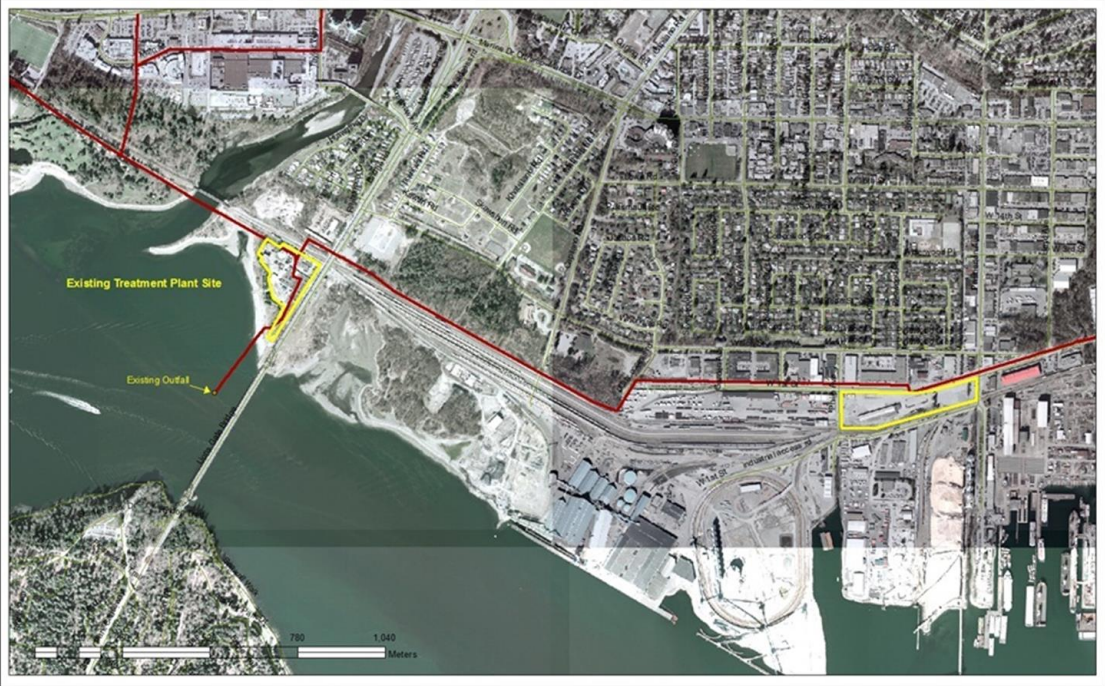
metrovancover

**Metro Vancouver Water Shortage Response Plan**

SERVICES AND SOLUTIONS FOR A LIVABLE REGION

# Water Shortage Response Plan (WSRP)





Lions Gate WWTP – project status



Request for Proposal

**Greater Vancouver Sewerage and Drainage  
District  
Lions Gate Secondary Wastewater Treatment  
Plant Project**

RFP #16-004

April 13, 2016

4330 Kingsway, Burnaby, BC, Canada V5H 4G8 • 604-432-6200 • www.metrovancover.org

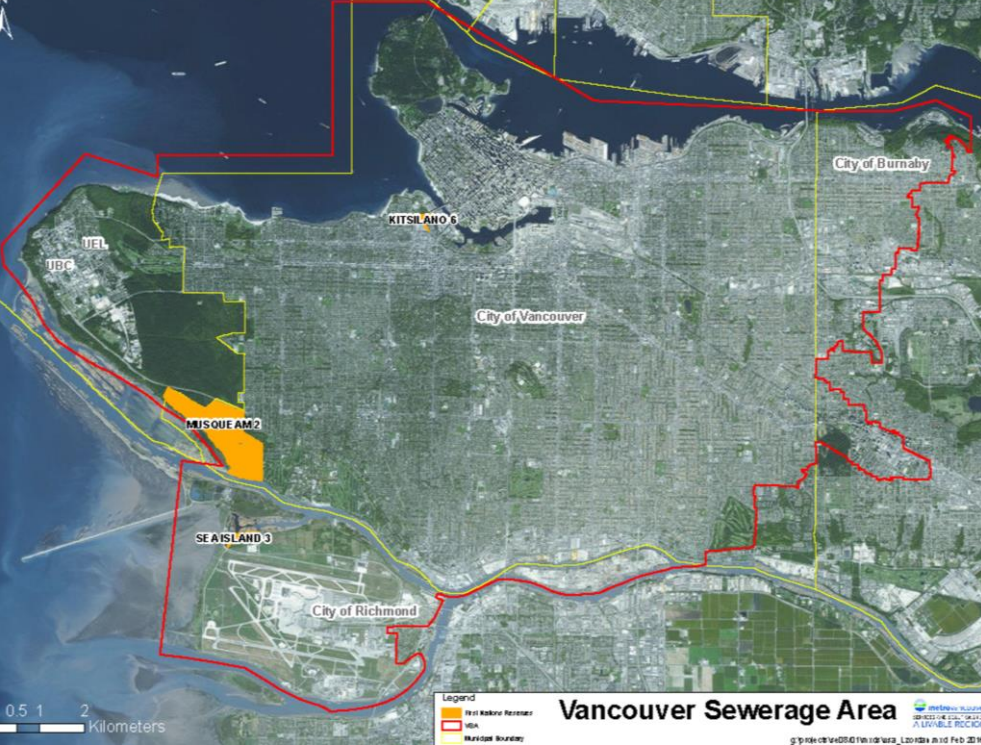
Greater Vancouver Regional District • Greater Vancouver Water District • Greater Vancouver Sewerage and Drainage District • Metro Vancouver  
Housing Corporation

6238044.05

## LGSWWTP Request for Proposals

- 3 respondents
- Technical Submissions (*November 2016*)
- Financial Submissions (*January 2017*)
- Selection of a Preferred Proponent (*February 2017*)
- Financial Close (*April 2017*)

# Lions Gate WWTP – project status



# Iona WWTP – project definition



# Regional Homelessness Task Force



- **MVHC restructuring**
- **Federal/provincial engagement**
- **Regional Affordable Housing Strategy**



# Affordable Housing and the Metro Vancouver Housing Corporation (MVHC)



# Heather Place redevelopment





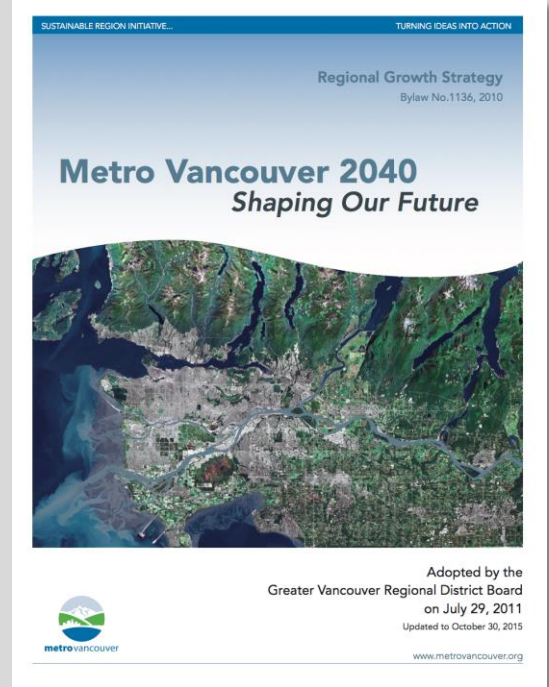
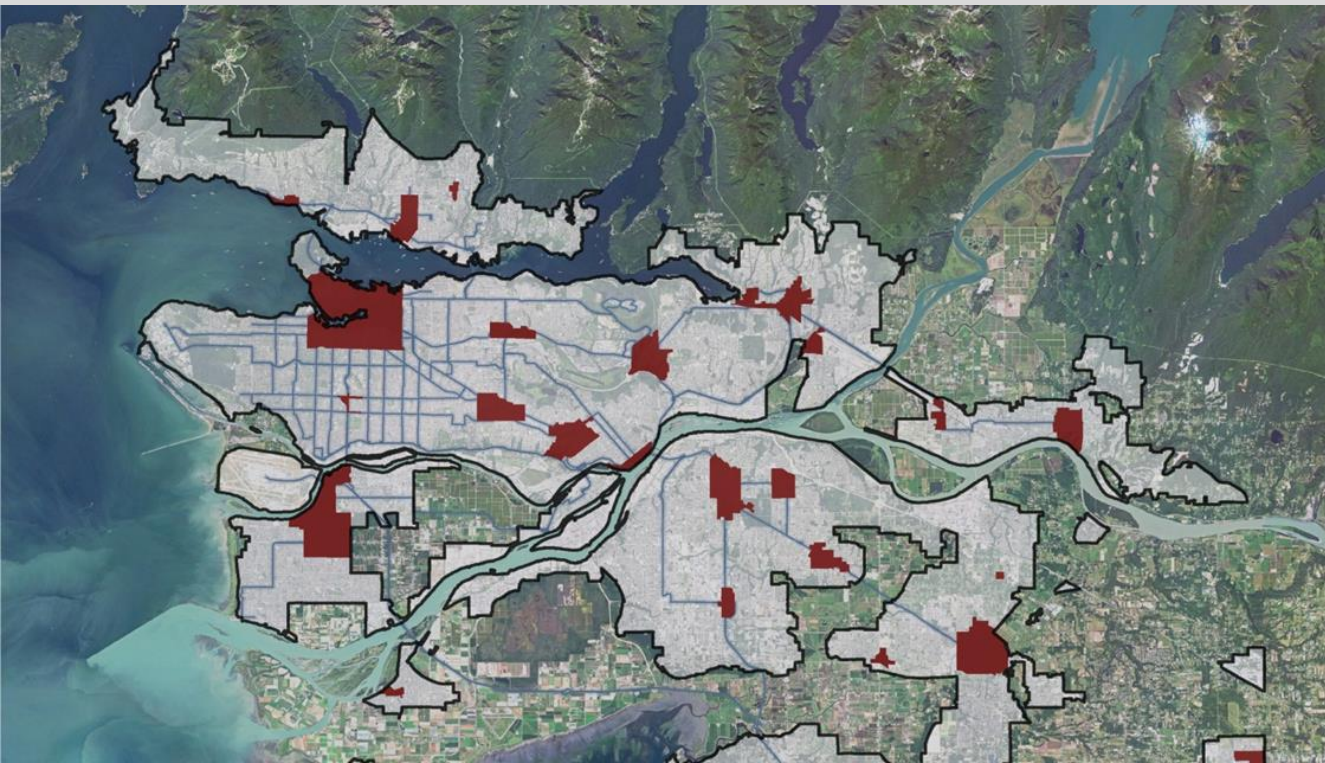
14 MVHC sites  
in Vancouver

770 housing  
units



Affordable housing – other MVHC sites





# Metro 2040



DRIVE BETTER.  
DRIVE LESS.  
DRIVE CHANGE.

Apply Today!

Log In

Home

About

News

FAQ

Contact

## Metro Vancouver Smart Drive Challenge

Drive better. Drive less. Drive change.



One of our biggest impacts on climate change and urban congestion is our personal vehicle.

Apply Today!



# Sustainability Innovation Funds





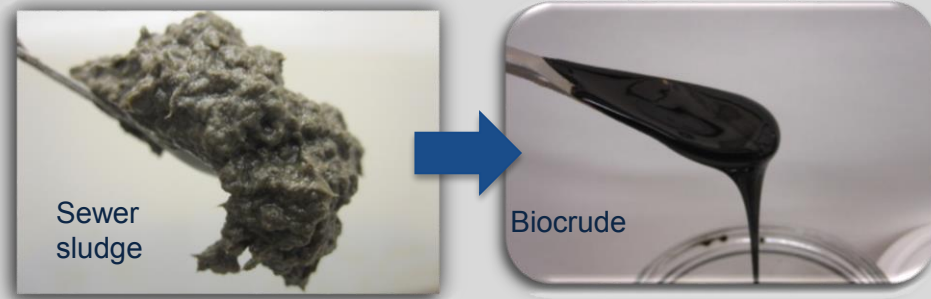
Strata Energy  
Advisor Program

Sustainability Innovation Funds





## Hydrothermal Processing Pilot Facility



Water conservation research/program

# Sustainability Innovation Funds



Questions?



**metrovancouver**  
SERVICES AND SOLUTIONS FOR A LIVABLE REGION