

BY-LAW NO. _____

**A By-law to amend
Zoning and Development By-law No. 3575
to rezone an area to CD-1**

THE COUNCIL OF THE CITY OF VANCOUVER, in public meeting, enacts as follows:

Zoning District Plan Amendment

1. This By-law amends the Zoning District Plan attached as Schedule D to By-law No. 3575, and amends or substitutes the boundaries and districts shown on it, according to the amendments, substitutions, explanatory legends, notations, and references shown on the plan marginally numbered Z-708 (a) attached as Schedule A to this By-law, and incorporates Schedule A into Schedule D, to By-law No. 3575.

Uses

2.1 The description of the area shown within the heavy black outline on Schedule A is CD-1 ().

2.2 Subject to Council approval of the form of development, to all conditions, guidelines and policies adopted by Council, and to the conditions set out in this By-law or in a development permit, the only uses permitted within CD-1 (), and the only uses for which the Director of Planning or Development Permit Board will issue development permits are:

- (a) Cultural and Recreational Uses, limited to Artist Studio, Arts and Culture Indoor Event, Club, Community Centre or Neighbourhood House, Fitness Centre, Library, and Museum or Archives;
- (b) Dwelling uses, limited to Dwelling Units in conjunction with any of the uses listed in this By-law;
- (c) Institutional Uses, limited to Church and Social Service Centre;
- (d) Manufacturing Uses, limited to Jewellery Manufacturing and Printing or Publishing;
- (e) Office Uses;
- (f) Retail Uses, limited to Farmers' Markets, Furniture or Appliance Store, Grocery or Drug Store, Liquor Store, Public Bike Share, Retail Store, Secondhand Store and Small-scale Pharmacy;

- (g) Service Uses, limited to Animal Clinic, Auction Hall, Barber Shop or Beauty Salon, Beauty and Wellness Centre, Catering Establishment, Laundromat or Dry Cleaning Establishment, Neighbourhood Public House, Photofinishing or Photography Studio, Print Shop, Repair Shop - Class A, Repair Shop - Class B, Restaurant, School - Arts or Self-Improvement, School - Business, School - Vocational or Trade, and Wedding Chapel;
- (h) Utility and Communication Uses, limited to Public Utility and Radiocommunication Station; and
- (i) Accessory Uses customarily ancillary to uses listed in this Section 2.2.

Conditions of use

3.1 No portion of the first storey of a building, to a depth of 10.7 m from the south wall of the building and extending across its full width, shall be used for residential purposes except for entrances to the residential portion.

3.2 All commercial uses permitted in the By-law shall be carried on wholly within a completely enclosed building except for:

- (a) Farmers' Market;
- (b) Neighbourhood Public House;
- (c) Public Bike Share;
- (d) Restaurant; and
- (e) Display of flowers, plants, fruits and vegetables in conjunction with a permitted use.

Floor area and density

4.1 Computation of the floor space ratio must assume that the site consists of 1,465 m², being the site size at the time of application for the rezoning evidenced by this By-law prior to any dedications.

4.2 The floor space ratio for all uses must to not exceed 3.44.

4.3 Computation of floor area must include all floors, including earthen floor, above and below ground level, having a minimum ceiling height of 1.2 m, measured to the extreme outer limits of the building.

4.4 Computation of floor area must exclude:

- (a) open residential balconies or sun decks and any other appurtenances which, in the opinion of the Director of Planning, are similar to the foregoing, except that:

- (i) the total area of all such exclusions must not exceed 12% of the permitted floor area, and
- (ii) the balconies must not be enclosed for the life of the building;
- (b) patios and roof gardens, if the Director of Planning first approves the design of sunroofs and walls;
- (c) where floors are used for off-street parking and loading, the taking on or discharging of passengers, bicycle storage, heating and mechanical equipment or uses which in the opinion of the Director of Planning are similar to the foregoing, those floors or portions thereof so used, located at or below base surface, provided that the maximum exclusion for a parking space shall not exceed 7.3 m in length; and
- (d) all residential storage area above or below base surface, except that if the residential storage area above base surface exceeds 3.7 m² per dwelling unit, there will be no exclusion for any of the residential storage area above base surface for that unit.

4.5 Computation of floor area may exclude amenity areas, except that the total exclusion for amenity areas must not exceed 10% of permitted floor area.

4.6 The use of floor area excluded under sections 4.4 and 4.5 must not include any use other than that which justified the exclusion.

Building height

5. Building height, measured from base surface, must not exceed 21.6 m.

Horizontal angle of daylight

6.1 Each habitable room must have at least one window on an exterior wall of a building.

6.2 The location of each such exterior window must allow a plane or planes extending from the window and formed by an angle of 50 degrees, or two angles with a sum of 70 degrees, to encounter no obstruction over a distance of 24.0 m.

6.3 Measurement of the plane or planes referred to in section 6.2 must be horizontally from the centre of the bottom of each window.

6.4 The Director of Planning or Development Permit Board may relax the horizontal angle of daylight requirement, if:

- (a) the Director of Planning or Development Permit Board first considers all the applicable policies and guidelines adopted by Council; and
- (b) the minimum distance of unobstructed view is not less than 3.7 m.

6.5 An obstruction referred to in section 6.2 means:

- (a) any part of the same building including permitted projections; or
- (b) the largest building permitted under the zoning on any site adjoining CD-1 ().

6.6 A habitable room referred to in section 6.1 does not include:

- (a) a bathroom; or
- (b) a kitchen whose floor area is the lesser of:
 - (i) 10% or less of the total floor area of the dwelling unit, or
 - (ii) 9.3 m².

Acoustics

7. All development permit applications require evidence in the form of a report and recommendations prepared by a person trained in acoustics and current techniques of noise measurement, demonstrating that the noise levels in those portions of dwelling units listed below do not exceed the noise level set opposite such portions. For the purposes of this section, the noise level is the A-weighted 24-hour equivalent (Leq) sound level and is defined simply as noise level in decibels.

Portions of dwelling units	Noise levels (Decibels)
Bedrooms	35
Living, dining, recreation rooms	40
Kitchen, bathrooms, hallways	45

Severability

8. A decision by a court that any part of this By-law is illegal, void, or unenforceable severs that part from this By-law, and is not to affect the balance of this By-law.

Force and effect

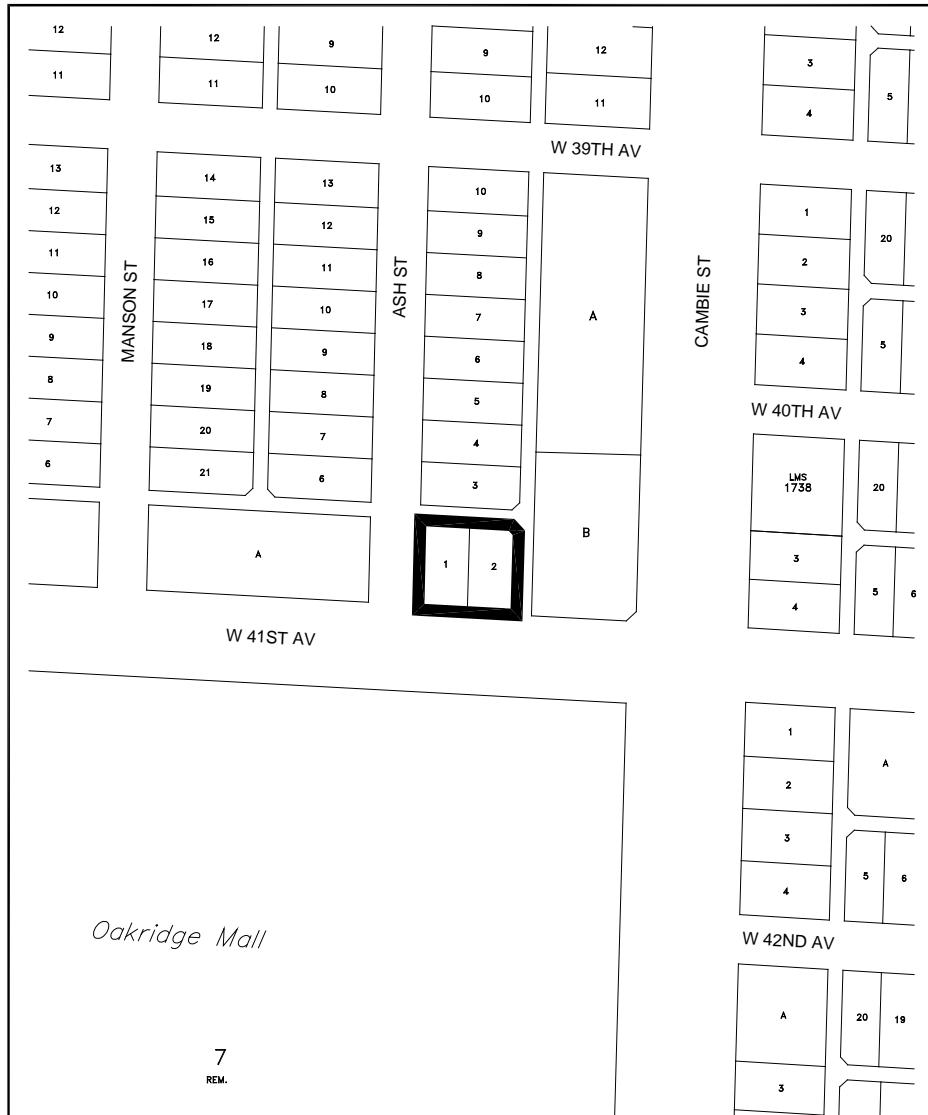
9. This By-law is to come into force and take effect on the date of its enactment.

ENACTED by Council this day of , 2016

Mayor

City Clerk

Schedule A



The properties outlined in black () are rezoned:
 From **RS-1** to **CD-1**

Z-708 (a)

RZ - 585 West 41st Avenue (5688 Ash Street)

map: 1 of 1
 scale: NTS



City of Vancouver

date: 2016-06-20