



CD-1 Rezoning: 445 Kingsway and 2935 St. George Street

Public Hearing | July 12, 2016

Site and Context





View from Kingsway/St. George intersection looking north



View from Robson Park, looking west



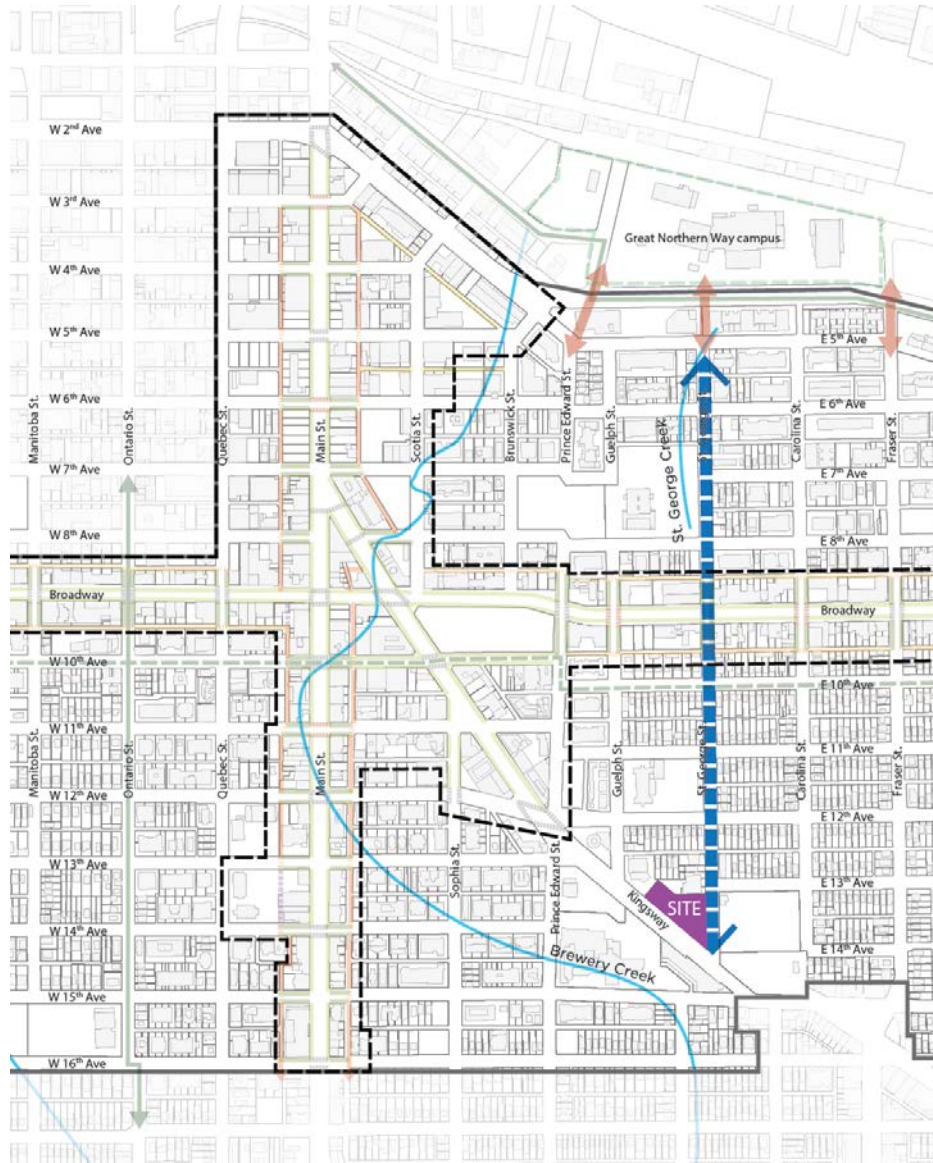
View from St. George Street, looking north



Parkade Entry



St. George Rainway

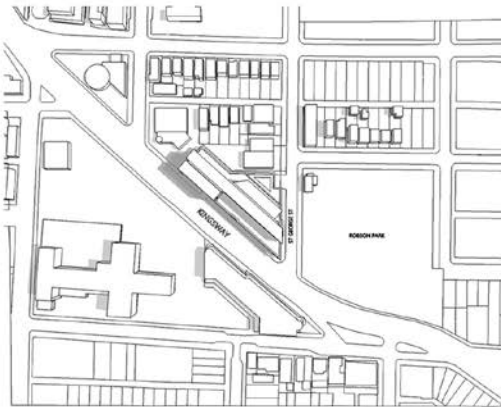


Example of a constructed rainway feature at Creeksway Park, Vancouver

View from Kingsway/St. George intersection looking north



Shadow Study - Proposed



June 22, 9 am



June 22, 12 pm



June 22, 3 pm



March/September 21, 9 am

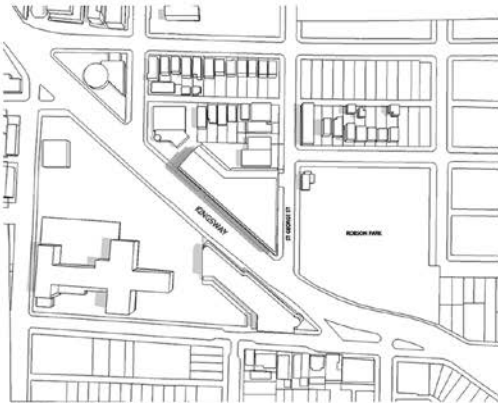


March/September 21, 12 pm



March/September 21, 3 pm

Shadow Study – C-2



June 22, 9 am



June 22, 12 pm



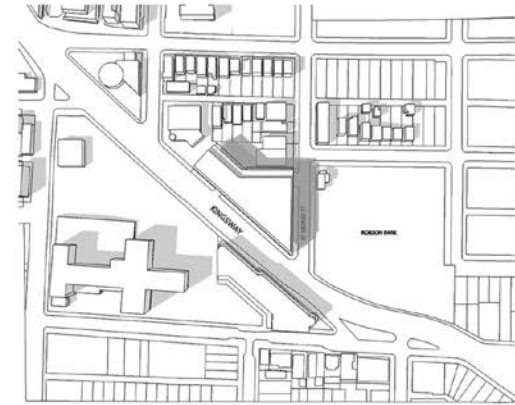
June 22, 3 pm



March/September 21, 9 am

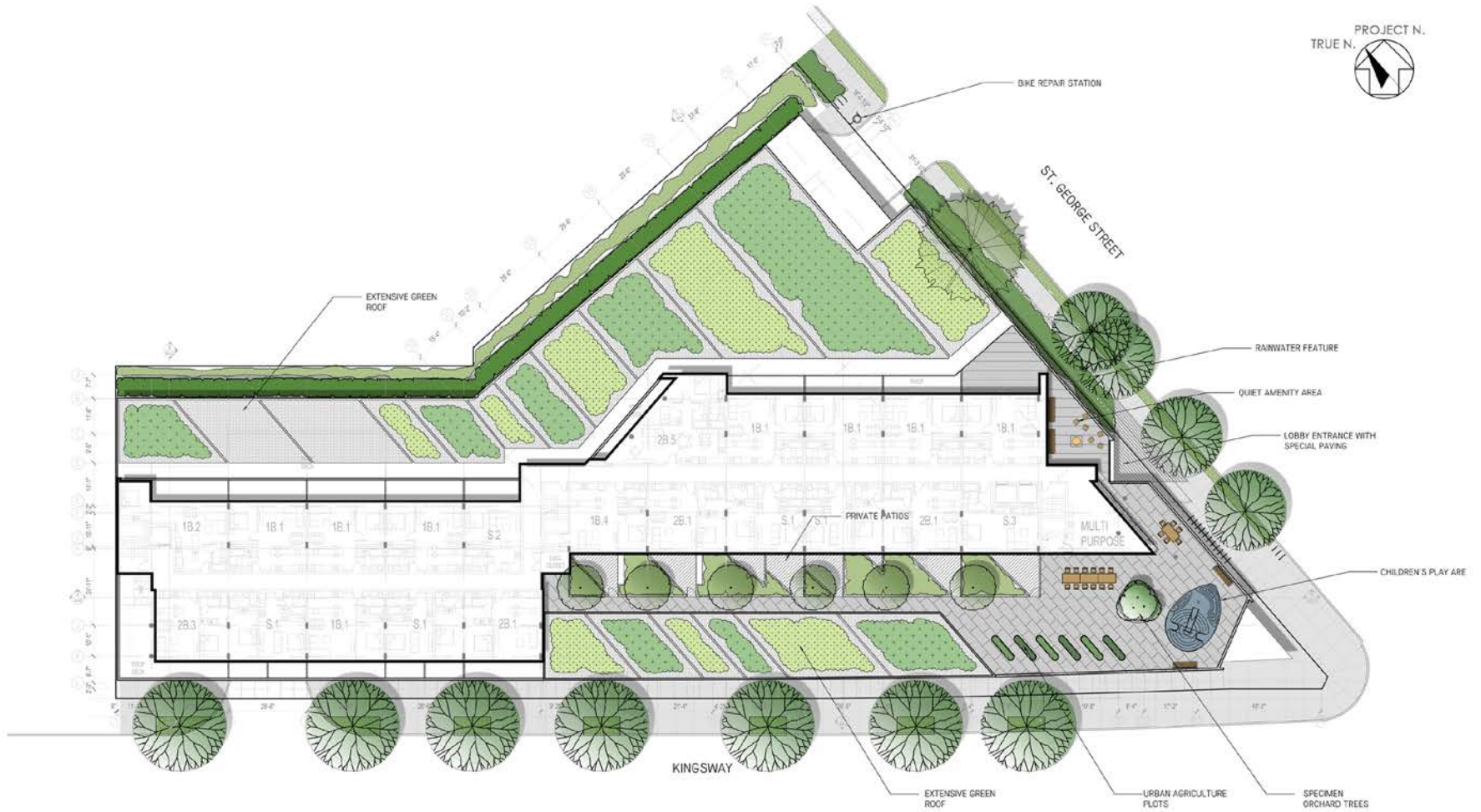


March/September 21, 12 pm

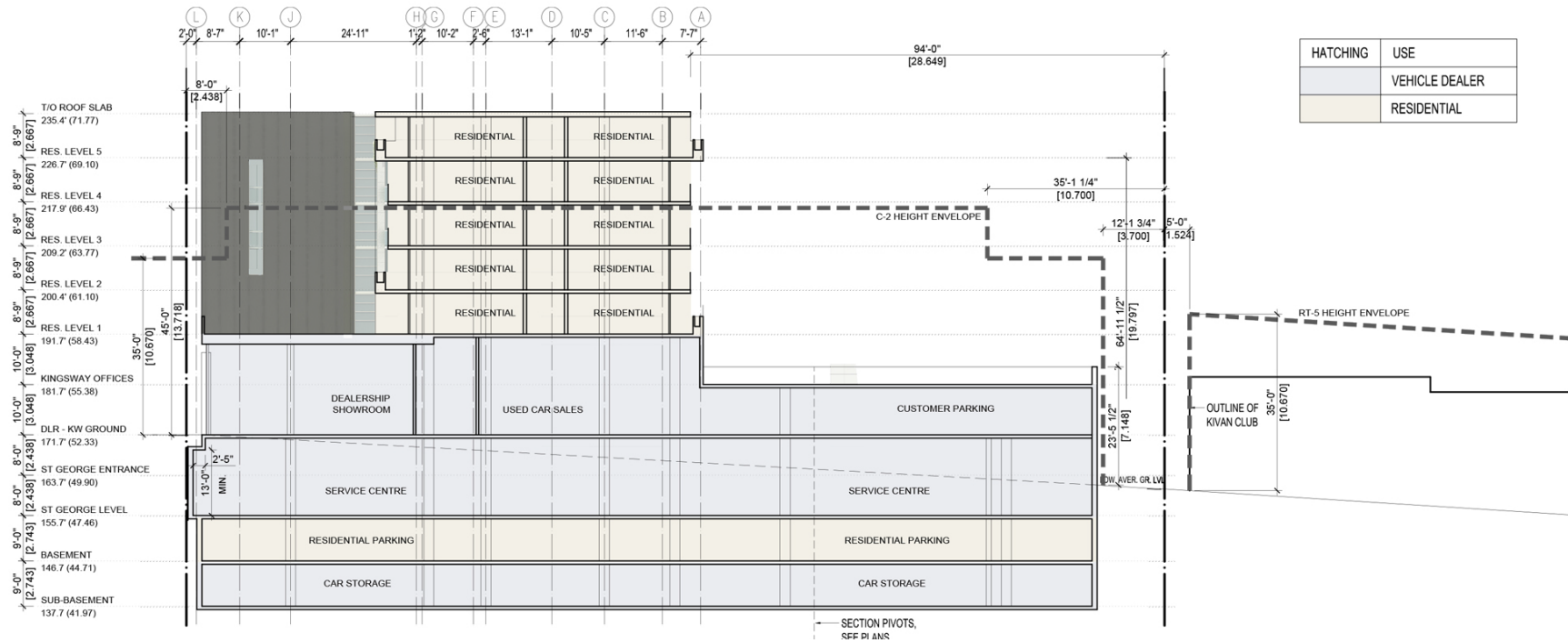


March/September 21, 3 pm

Site Plan



Cross-section



HATCHING	USE
	VEHICLE DEALER
	RESIDENTIAL