

RESOLUTION

3. Closure and Sale of a Portion of Lane Adjacent to 3205 to 3221 West 41st Avenue

THAT WHEREAS:

1. The City of Vancouver is the owner of all the streets and lanes lying within the limits of the City of Vancouver;
2. There is a proposal to redevelop:
 - a. [PID: 010-297-723] Lot 1 Block 12 District Lot 2027 Plan 7918;
 - b. [PID: 007-352-735] Lot 2 Block 12 District Lot 2027 Plan 7918;
 - c. [PID: 010-297-766] Lot 3 Block 12 District Lot 2027 Plan 7918;
 - d. [PID: 003-500-233] Lot 4 Block 12 District Lot 2027 Plan 7918; and
 - e. [PID: 013-006-797] Lot A (Reference Plan 10053) Block 12 District Lot 2027 Plan 3269;collectively, the "Rezoning Lots".
3. The proposal requires the closure of a 355.5 square metre portion of lane abutting the Rezoning Lots.
4. The said portion of lane was dedicated by the deposit of Plans 4098 and 7918 in 1912 and 1948, respectively.
5. The said portion of lane to be closed is no longer required for municipal purposes.
6. The said portion of lane to be closed will be conveyed to the owner of said Lots 1 to 4, and will be subdivided with the Rezoning Lots to form two parcels.

THEREFORE BE IT RESOLVED THAT all that portion of lane adjacent to the said Rezoning Lots, the same as shown in heavy outline on the Reference Plan prepared by Steven E. Wong, B.C.L.S., completed on the 27th day of November, 2015, and numbered Plan EPP51580, a copy of which is attached hereto, be closed, stopped-up and conveyed to the owner of said Lots 1 to 4; and

BE IT FURTHER RESOLVED THAT the said portion of lane to be closed is to be subdivided with the said Rezoning Lots to form two parcels, as shown within the heavy bold outline on the Subdivision Plan prepared by Steven E. Wong, B.C.L.S., completed on the 27th day of November, 2015, and numbered Plan EPP51581, to the satisfaction of the Approving Officer and the Director of Legal Services.

* * * * *

**REFERENCE PLAN TO ACCOMPANY RESOLUTION OF THE COUNCIL
OF THE CITY OF VANCOUVER STOPPING-UP PORTIONS OF:
1) LANE DEDICATED BY THE DEPOSIT OF PLAN 4098 ADJACENT
TO LOT A (REFERENCE PLAN 10053), PLAN 3269 AND;
2) LANE DEDICATED BY THE DEPOSIT OF PLAN 7918 ADJACENT
TO LOTS 1 TO 4 INCLUSIVE, PLAN 7918,
ALL OF BLOCK 12, DISTRICT LOT 2027,
GROUP 1, NEW WESTMINSTER DISTRICT**

PLAN EPP51580

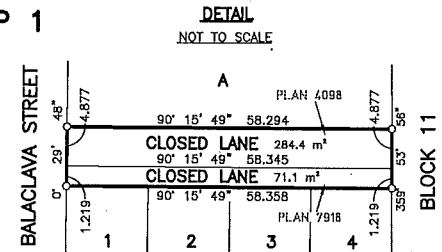
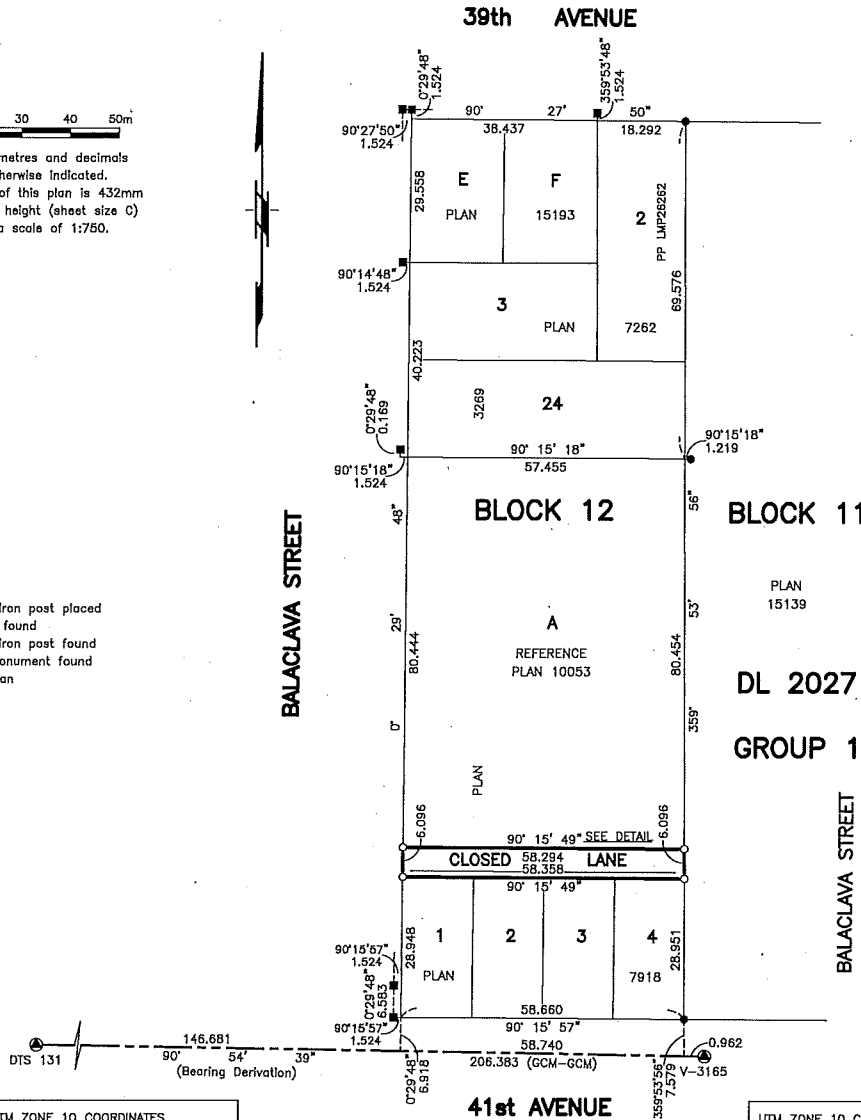
BCGS:92G.025



All distances are in metres and decimals thereof unless otherwise indicated. The intended plot size of this plan is 432mm in width by 560mm in height (sheet size C) when plotted at a scale of 1:750.

LEGEND

- standard iron post placed
- lead plug found
- standard iron post found
- ⊙ control monument found
- PP posting plan



UTM ZONE 10 COORDINATES
DATUM: NAD83(CSRS)4.0.0.BC.1.GVRD
NORTHING 5453578.209
EASTING 486996.959
POINT COMBINED FACTOR: 0.9995981
ESTIMATED HORIZONTAL
POSITIONAL ACCURACY: ±0.01m

UTM ZONE 10 COORDINATES
DATUM: NAD83(CSRS)4.0.0.BC.1.GVRD
NORTHING 5453574.930
EASTING 487203.233
POINT COMBINED FACTOR: 0.9995968
ESTIMATED HORIZONTAL
POSITIONAL ACCURACY: ±0.01m

Integrated Survey Area No.31, City of Vancouver.
NAD83(CSRS)4.0.0.BC.1.GVRD.

Grid bearings are derived from observations between geodetic control monuments DTS 131 and V-3165.

The UTM coordinates and estimated horizontal positional accuracy achieved have been derived from the MASCOT published coordinates and standard deviations for geodetic control monuments DTS 131 and V-3165.

This plan shows horizontal ground-level distances unless otherwise specified. To compute grid distances, multiply ground-level distances by the average combined factor of 0.99959745 which has been derived from geodetic control monuments DTS 131 and V-3165.

This plan lies within the Greater Vancouver Regional District.

The field survey represented by this plan was completed on the 27th day of November, 2015. Steven E. Wong, BCLS 942.

Ken K. Wong and Associates
Canada and B.C. Land Surveyors
5624 E. Hastings Street
Burnaby, B.C. V5B 1R4
Telephone: 604-294-8881
Fax: 604-294-0625
150309 FB921 P78
FB991 P112-116
R-5573 TGA-531
Drawn by:TB SU-2748

FILE: SU-2452

SUBMISSION PLAN OF:

PLAN EPP51581

- 1) LOT A (REFERENCE PLAN 10053), PLAN 3269;**
- 2) LOTS 1 TO 4 INCLUSIVE, ALL OF PLAN 7918;**
- 3) CLOSED LANE INCLUDED IN PLAN EPP51580**
(DEDICATED BY THE DEPOSIT OF PLANS 4098 AND 7918);
- ALL OF BLOCK 12, DISTRICT LOT 2027,**
GROUP 1, NEW WESTMINSTER DISTRICT

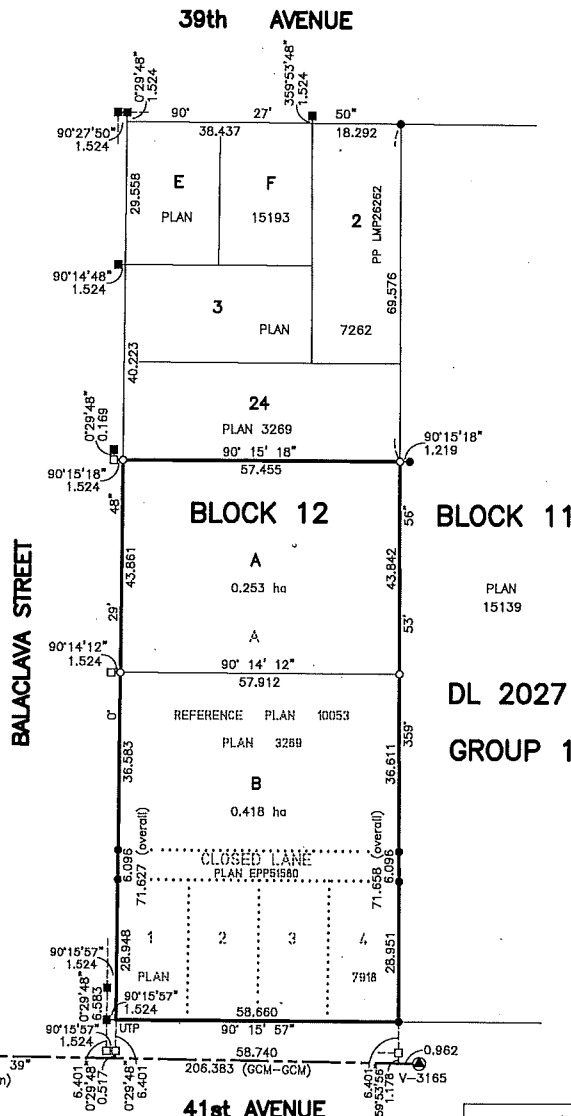
PURSUANT TO SECTION 67, LAND TITLE ACT
 BCGS:92G.025



All distances are in metres and decimals thereof unless otherwise indicated. The intended plot size of this plan is 432mm in width by 560mm in height (sheet size C) when plotted at a scale of 1:750.

LEGEND

- lead plug placed
- standard iron post placed
- lead plug found
- standard iron post found
- ⊙ control monument found
- PP posting plan
- UTP unsuitable to post



UTM ZONE 10 COORDINATES
 DATUM: NAD83(CSRS)4.0.0.BC.1.GVRD
 NORTHING 5453578.209
 EASTING 486996.959
 POINT COMBINED FACTOR: 0.9995981
 ESTIMATED HORIZONTAL
 POSITIONAL ACCURACY: ±0.01m

UTM ZONE 10 COORDINATES
 DATUM: NAD83(CSRS)4.0.0.BC.1.GVRD
 NORTHING 5453574.930
 EASTING 487203.233
 POINT COMBINED FACTOR: 0.9995968
 ESTIMATED HORIZONTAL
 POSITIONAL ACCURACY: ±0.01m

Integrated Survey Area No.31, City of Vancouver.
 NAD83(CSRS)4.0.0.BC.1.GVRD.

Grid bearings are derived from observations between geodetic control monuments DTS 131 and V-3165.

The UTM coordinates and estimated horizontal positional accuracy achieved have been derived from the MASCOT published coordinates and standard deviations for geodetic control monuments DTS 131 and V-3165.

This plan shows horizontal ground-level distances unless otherwise specified. To compute grid distances, multiply ground-level distances by the average combined factor of 0.99959745 which has been derived from geodetic control monuments DTS 131 and V-3165.

This plan lies within the jurisdiction of the Approving Officer for the City of Vancouver.

The field survey represented by this plan was completed on the 27th day of November, 2015. Steven E. Wong, BCLS 942.

This plan lies within the Greater Vancouver Regional District.

Ken K. Wong and Associates
 Canada and B.C. Land Surveyors
 5824 E. Hastings Street
 Burnaby, B.C. V5B 1R4
 Telephone: 604-294-8881
 Fax: 604-294-0825
 150309 FB921 P78
 FB891 P112-116
 R-5573 TGA-531 SU-2452
 Drawn by:TB

FILE: SU-2748