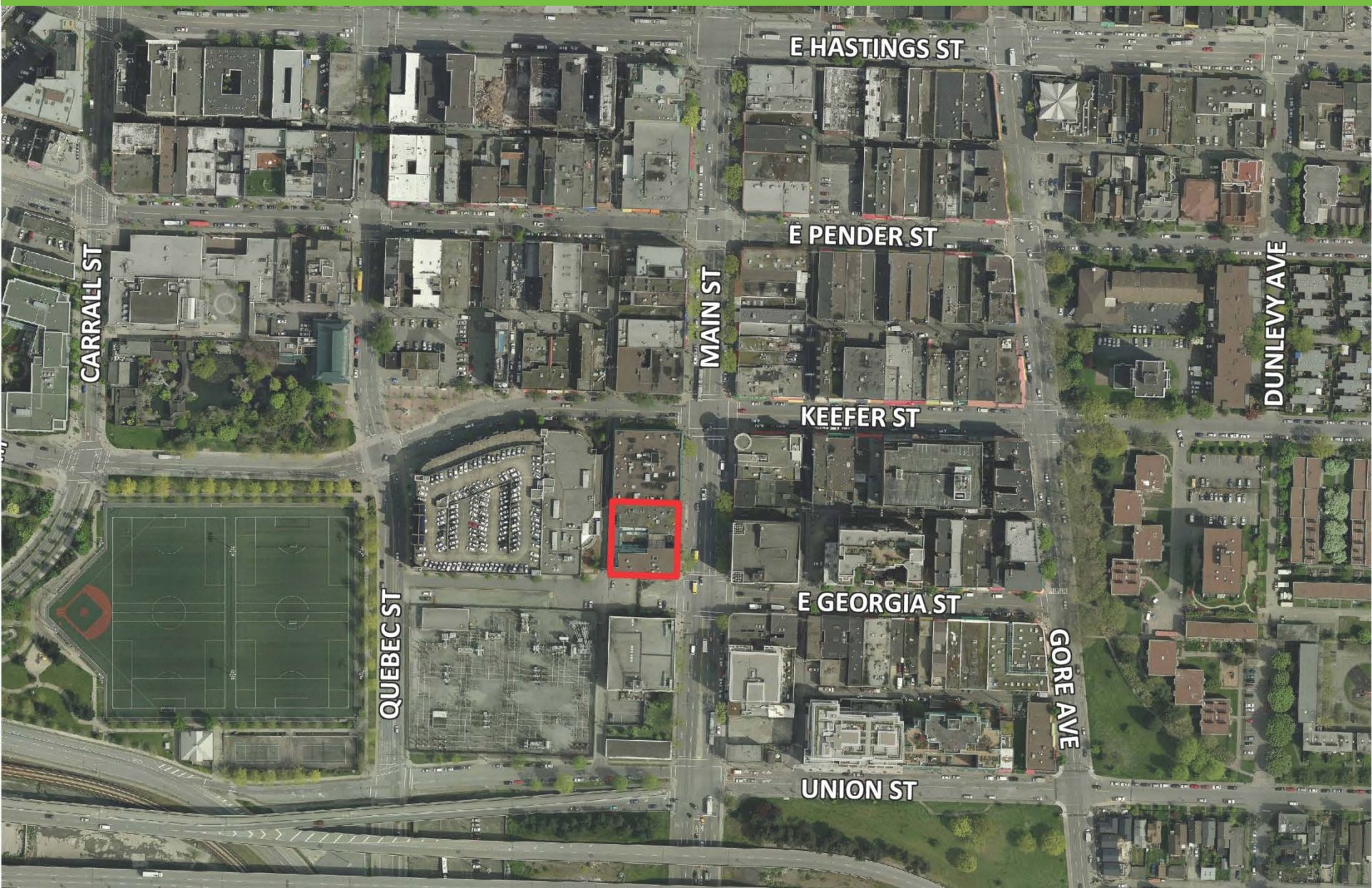




CD-1 Rezoning 633 Main Street

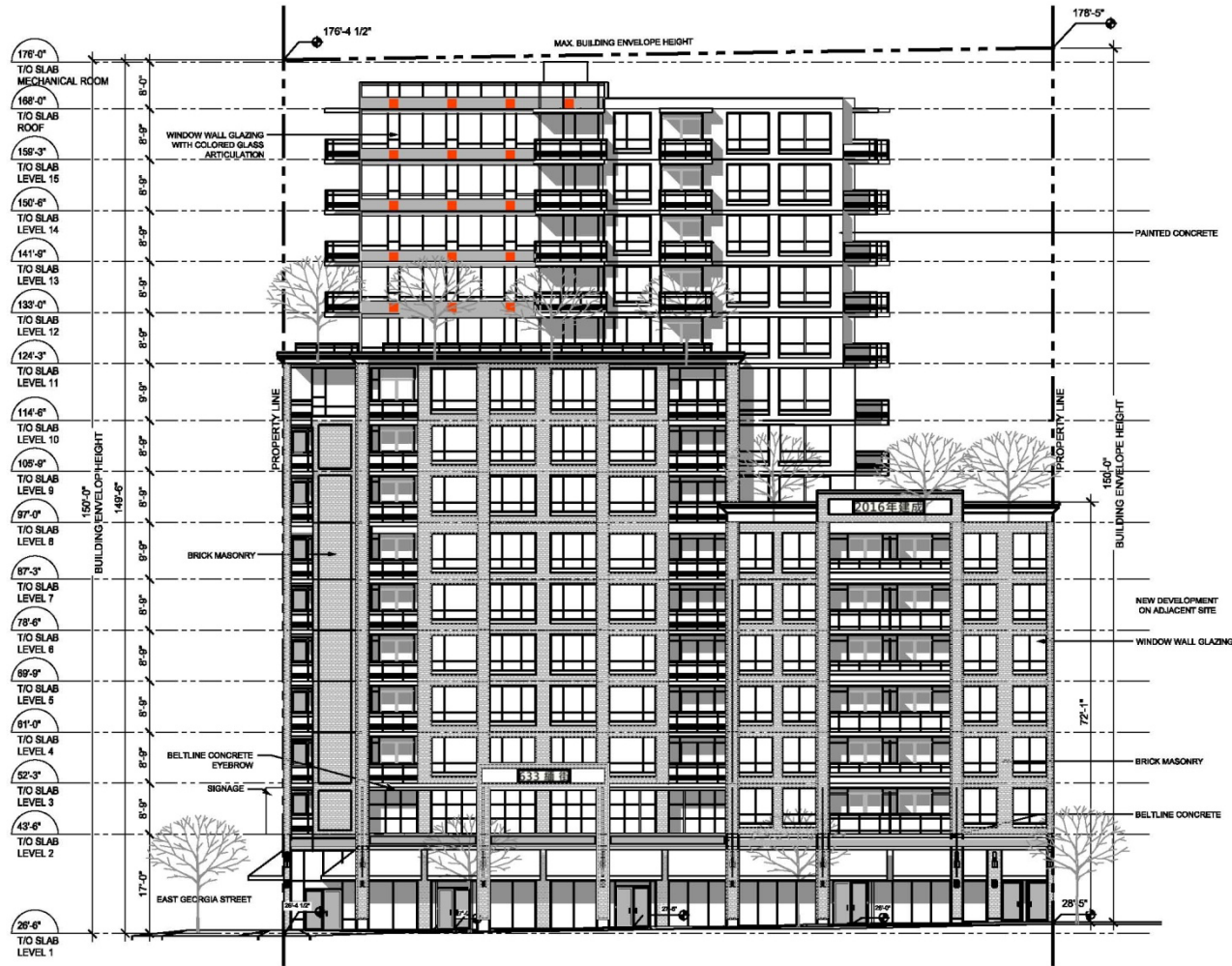
**Public Hearing
February 27, 2013**

Site and Context

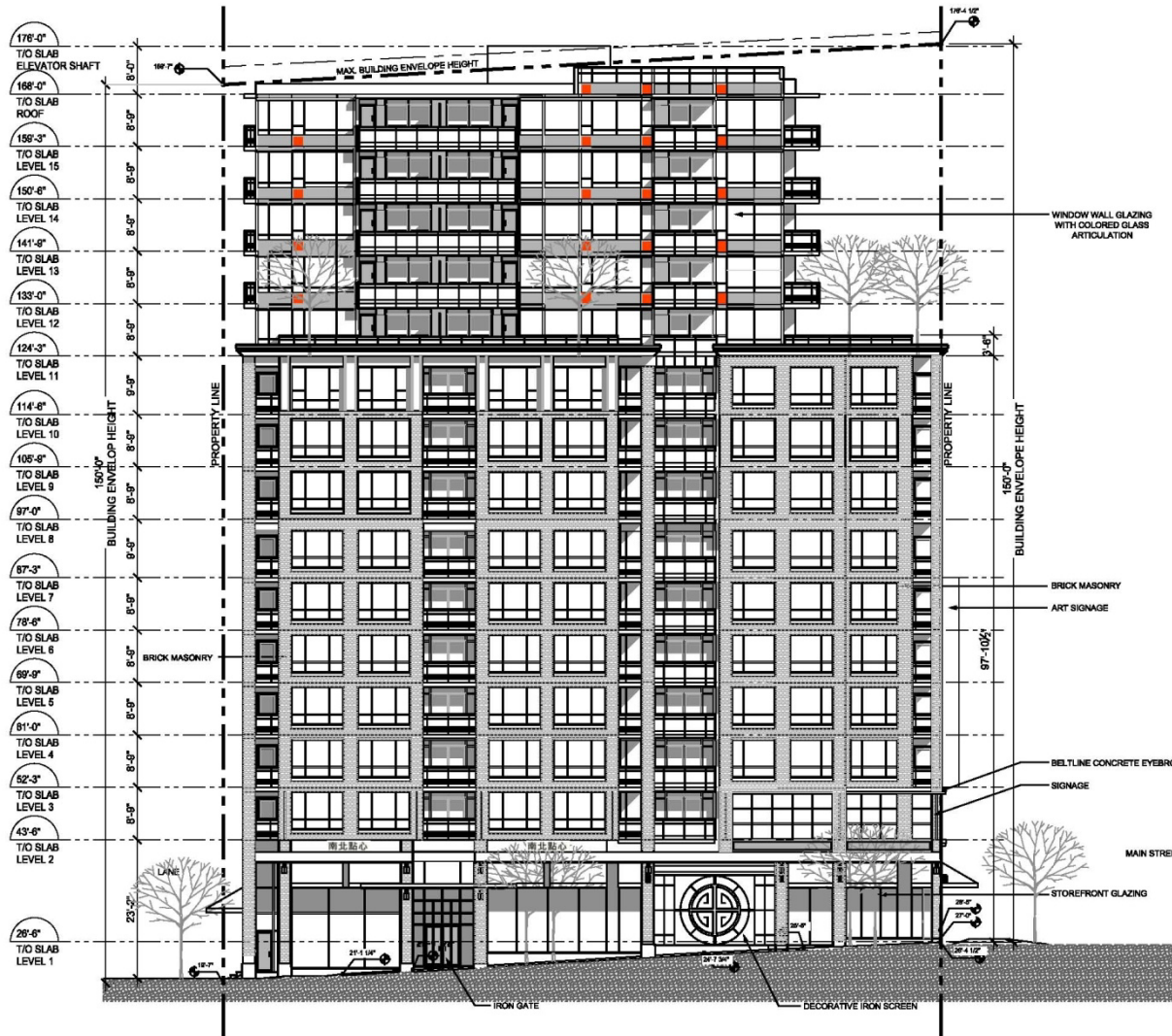


- Rezoning Policy for Chinatown South (2011)
 - policies to consider rezonings of up to 150 feet.
- Chinatown HA-1A Design Guidelines (2011)
- Chinatown Neighbourhood Plan and Economic Revitalization Strategy (July 2012)
- Downtown Eastside (DTES) Local Area Plan
 - Interim Rezoning Policy, allows redevelopments in Chinatown South to proceed

View from Main Street

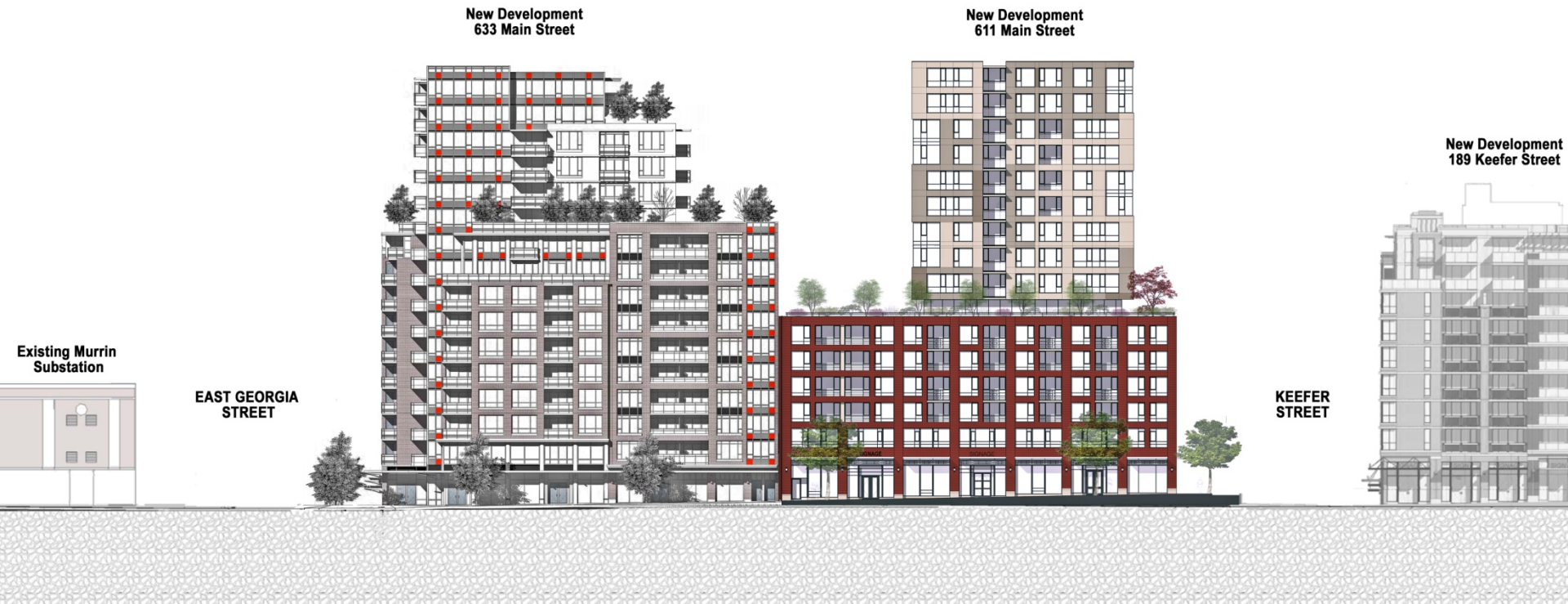


View from East Georgia Street

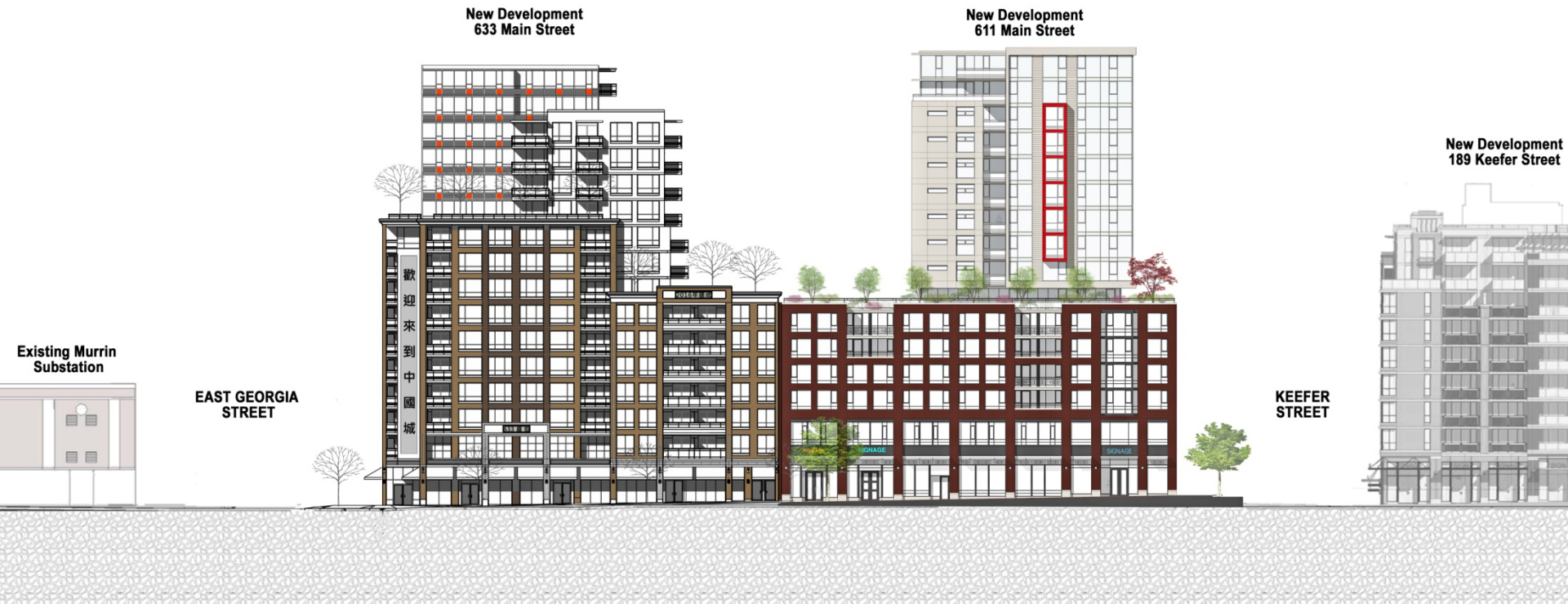


- Open House June 2012
 - 40 people in attendance
- Review by CHAPC June 2012
 - Concerns about fit in context

Original Development Proposal



Revised Development Proposal



Original Development Proposal



Revised Development Proposal

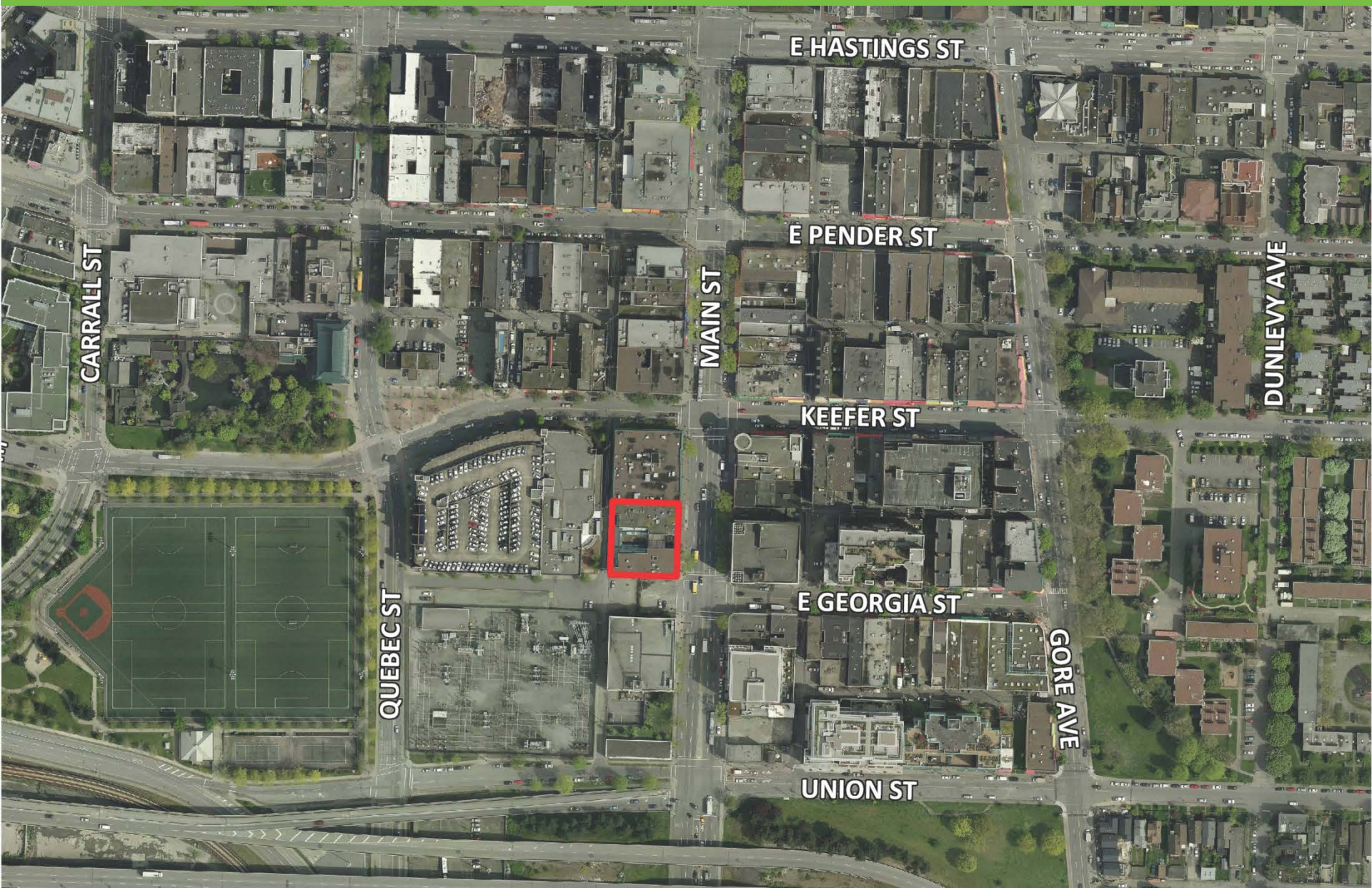


Review by DTES LAP November 2012

- Concerns about gentrification and displacement
- Community Benefit Agreements
- New Retail Space unaffordable
- Design and fit into Chinatown

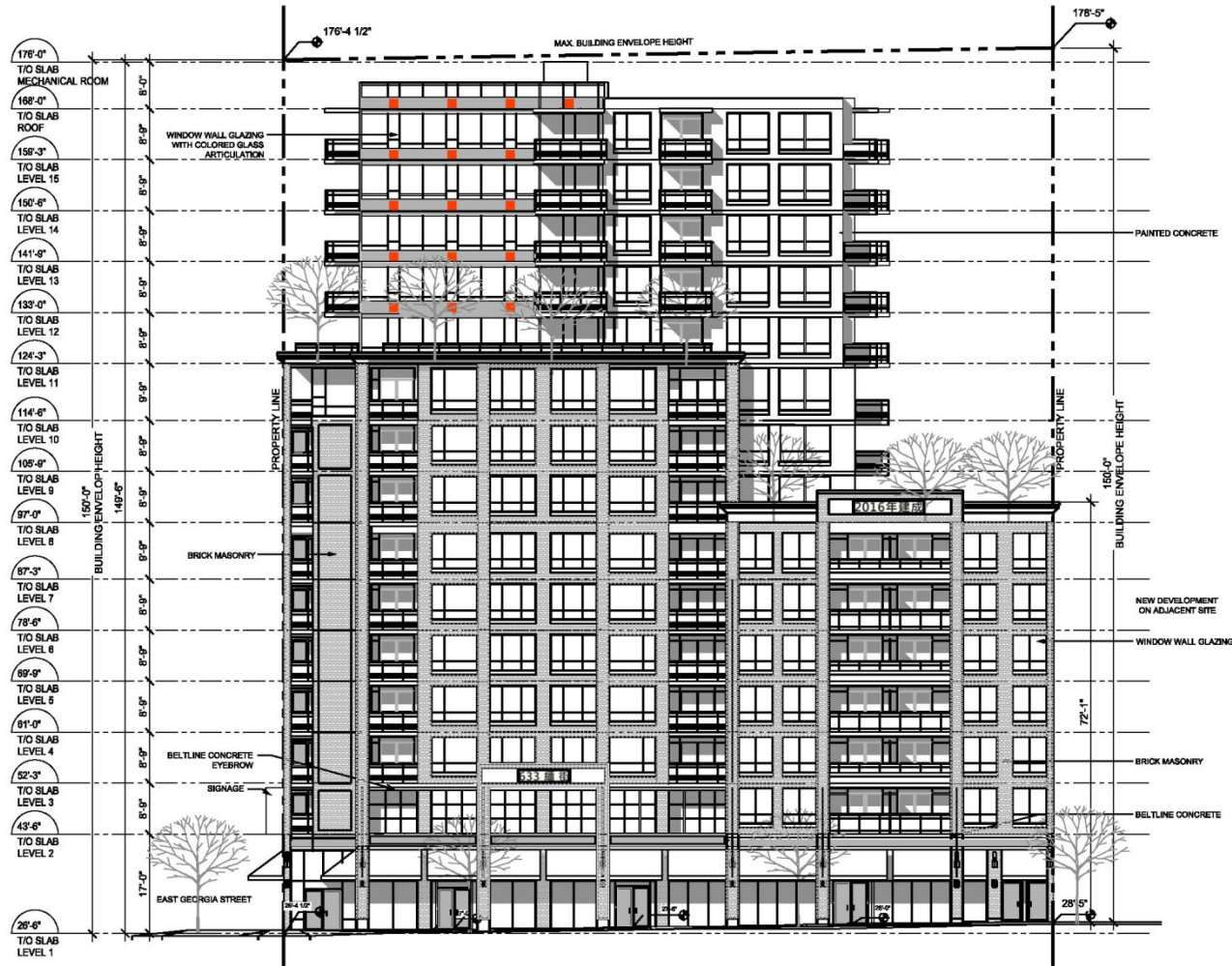
- Memo 1 -- Status of Applications in the Downtown Eastside
- Memo 2 - Questions from Councillor Tang
 - Cornice Treatments on Buildings
 - Neon Signage in Chinatown
 - Laneway Activation

Site and Context

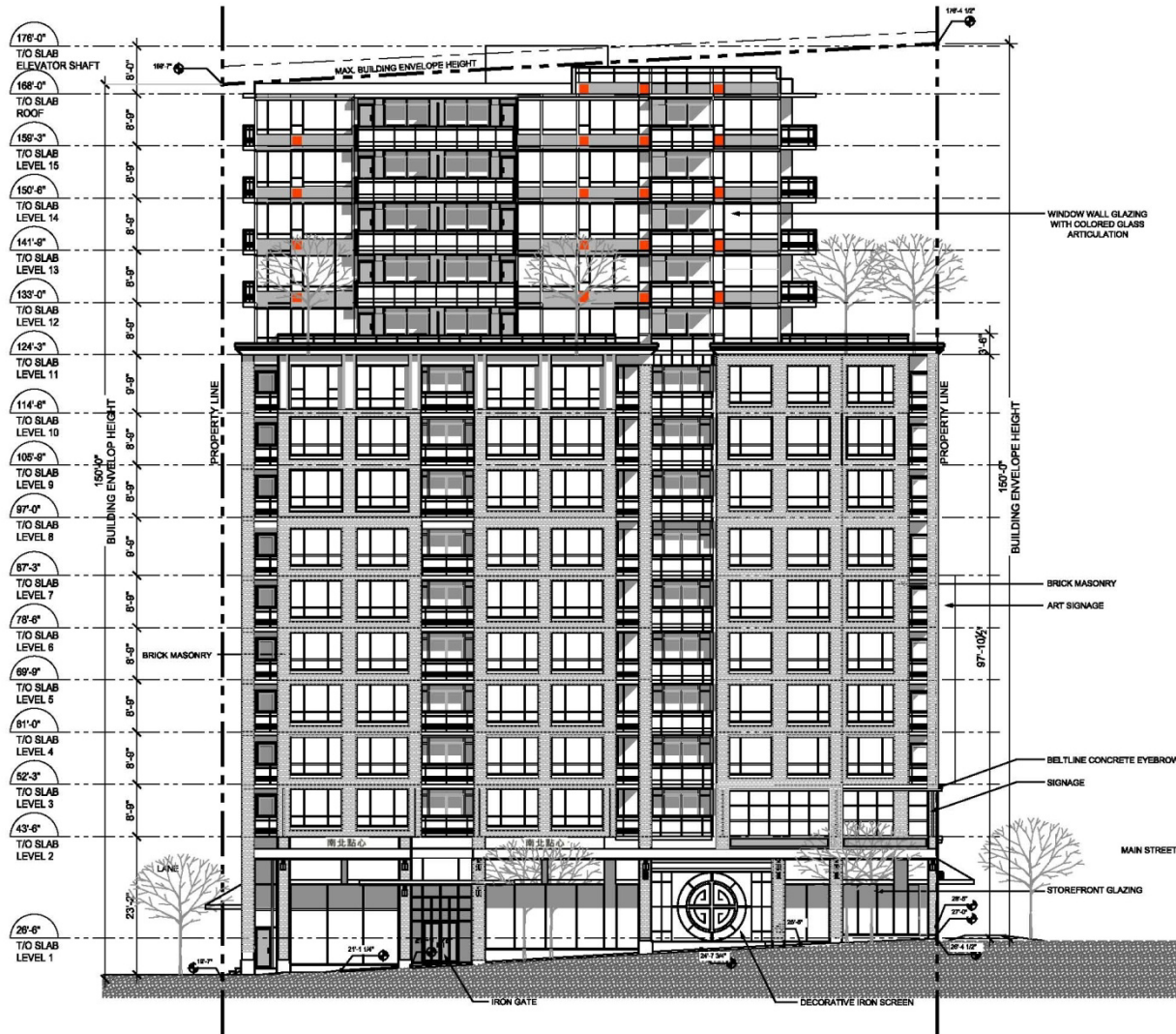


- Rezoning Policy for Chinatown South (2011)
 - policies to consider rezonings of up to 150 feet.
- Chinatown HA-1A Design Guidelines (2011)
- Chinatown Neighbourhood Plan and Economic Revitalization Strategy (July 2012)
- Downtown Eastside (DTES) Local Area Plan
 - Interim Rezoning Policy, allows redevelopments in Chinatown South to proceed

View from Main Street

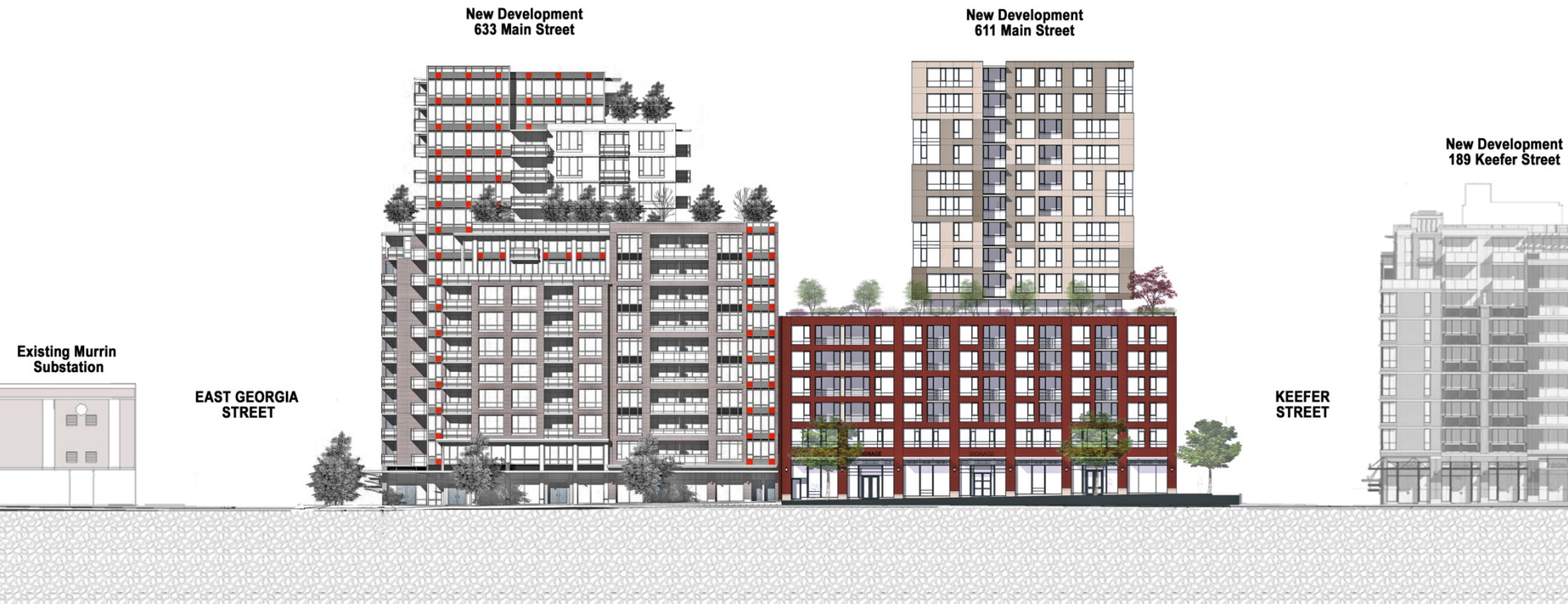


View from East Georgia Street



- Open House June 2012
 - 40 people in attendance
- Review by CHAPC June 2012
 - Concerns about fit in context

Original Development Proposal



Revised Development Proposal



Original Development Proposal



Revised Development Proposal



Review by DTES LAP November 2012

- Concerns about gentrification and displacement
- Community Benefit Agreements
- New Retail Space unaffordable
- Design and fit into Chinatown

- Memo 1 -- Status of Applications in the Downtown Eastside
- Memo 2 - Questions from Councillor Tang
 - Cornice Treatments on Buildings
 - Neon Signage in Chinatown
 - Laneway Activation