

- - - ZONING BOUNDARY
 - - - SUB-AREA BOUNDARY

550 PACIFIC ST. DE 406577

DATE 2002 05 28

DRAWN WGS



CITY OF VANCOUVER PLANNING DEPARTMENT

FILENAME :F:FRMOFDEV\2002 FRMOFDEV.550 PACIFIC.DWG

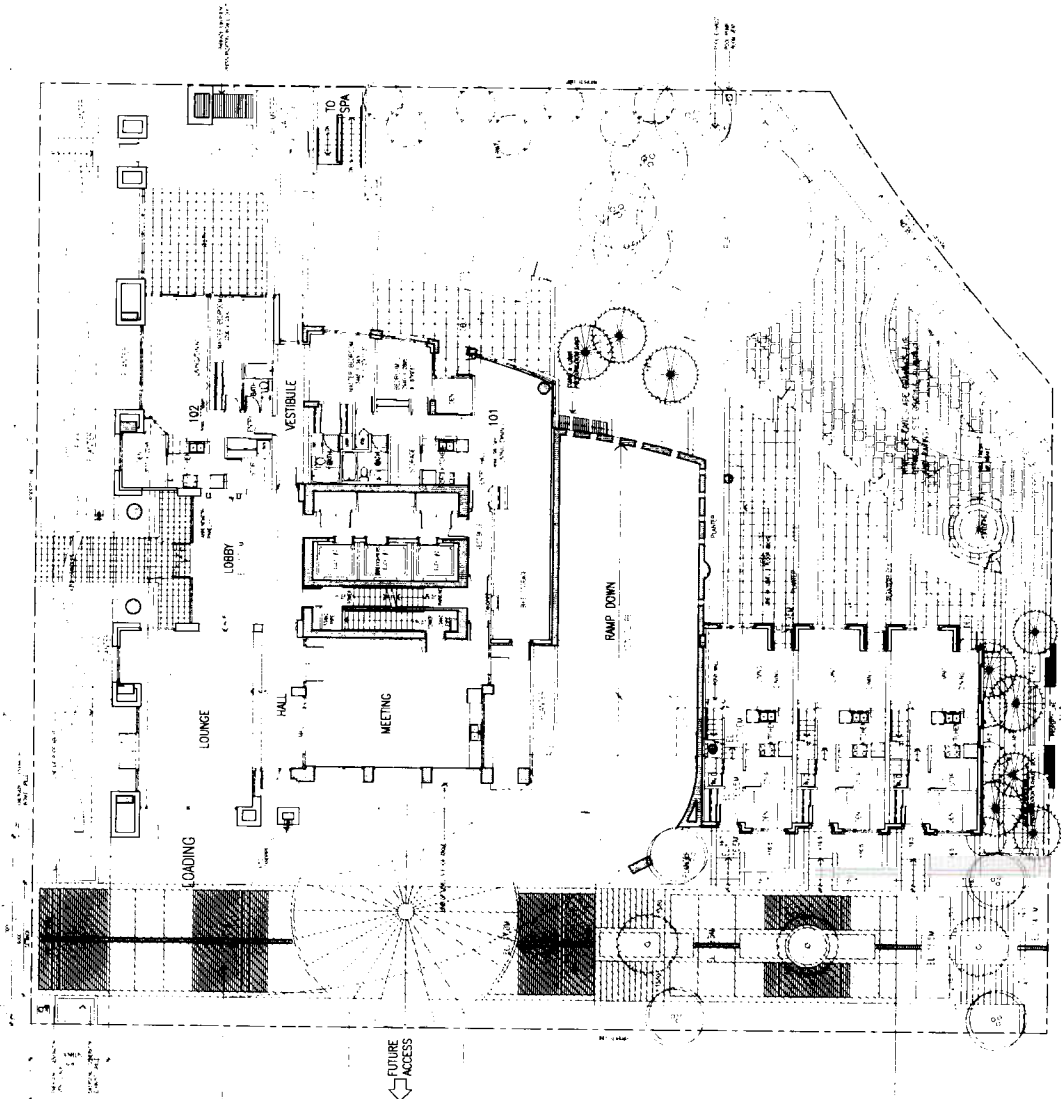
CONCORD PACIFIC GROUP INC.
10000 ALI WAY, Suite 100
Portland, OR 97201
TEL: (503) 251-1882 FAX: (503) 251-2224



IBI GROUP
ARCHITECTS
1000 NE Oregon Street
Portland, OR 97232
TEL: (503) 251-1882 FAX: (503) 251-2224

LEVEL 1 FLOOR PLAN

A3.



FIRE DEPARTMENT
ACCESS
(SHAD 100)

FUTURE
ACCESS

LOADING

LOUNGE

HALL

MEETING

LOBBY

VESTIBULE

RAMP
DOWN

TO
SPA

CONCORD PACIFIC GROUP, INC.
10000 15th Street, Suite 1000
San Francisco, CA 94133
Tel: 415 440-1881, Fax: 415 440-1882



CONCORD PACIFIC
Group, Inc.
Architect

REV: MAY 22, 2012
BY: [Signature]
DATE: MAY 22, 2012
DESCRIPTION: [Signature]
DATE: MAY 22, 2012
PROJECT: [Signature]
DATE: MAY 22, 2012

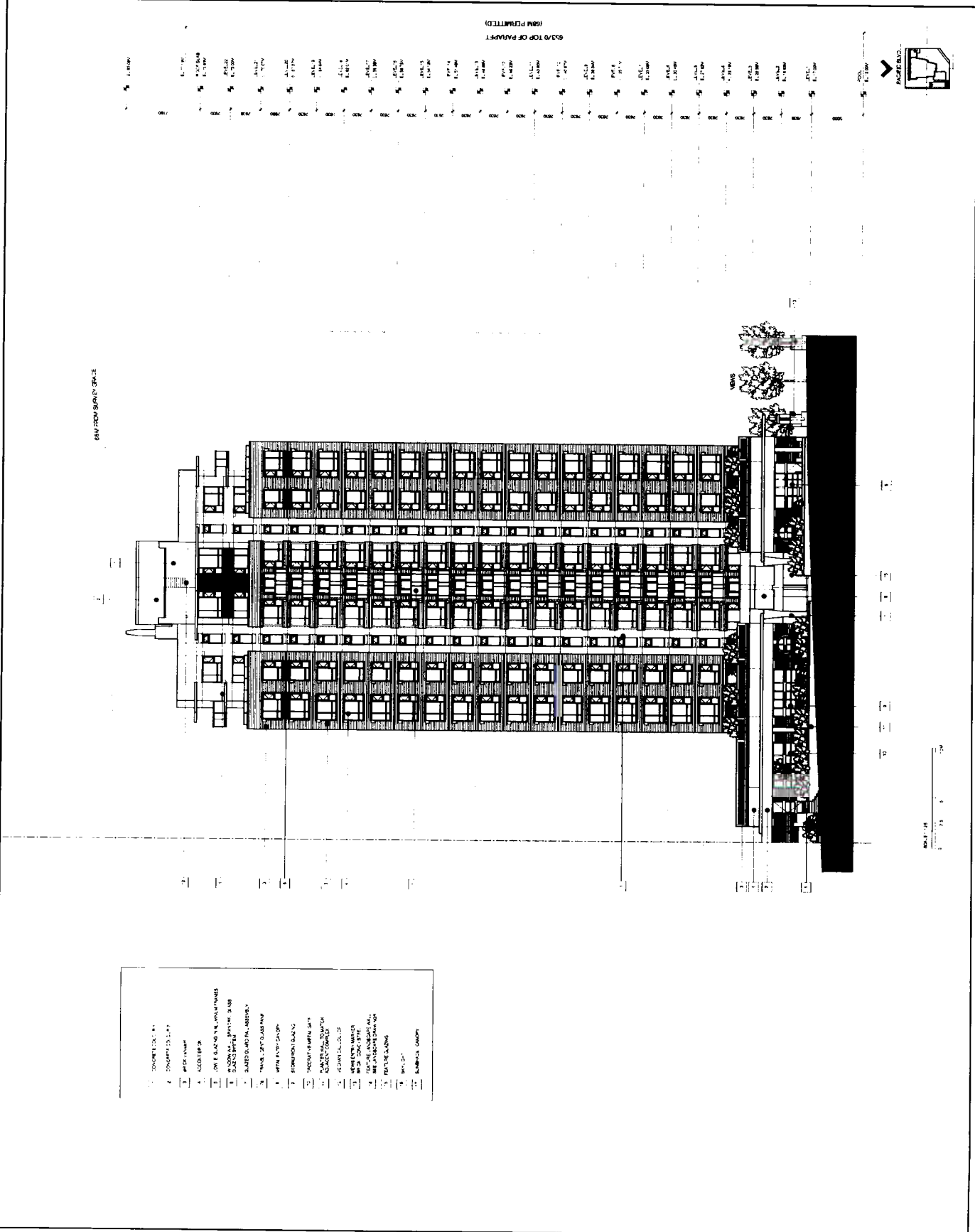


JBI GROUP, INC.
1100 Market Street, Suite 1000
San Francisco, CA 94102
Tel: 415 774-1881, Fax: 415 774-1882

DATE: MAY 22, 2012
BY: [Signature]
DATE: MAY 22, 2012
DESCRIPTION: [Signature]
DATE: MAY 22, 2012
PROJECT: [Signature]
DATE: MAY 22, 2012

A4.0

22 FLOOR
This drawing is a part of a set of architectural drawings. It is not to be used in isolation. It is to be used in conjunction with the other drawings in the set. It is not to be used for construction without the approval of the architect.



65'0" TO 50'0" SPACE


65'0" TO 50'0" SPACE



- 1. CONCRETE CURB
- 2. CONCRETE CURB
- 3. CONCRETE CURB
- 4. CONCRETE CURB
- 5. CONCRETE CURB
- 6. CONCRETE CURB
- 7. CONCRETE CURB
- 8. CONCRETE CURB
- 9. CONCRETE CURB
- 10. CONCRETE CURB
- 11. CONCRETE CURB
- 12. CONCRETE CURB
- 13. CONCRETE CURB
- 14. CONCRETE CURB
- 15. CONCRETE CURB
- 16. CONCRETE CURB
- 17. CONCRETE CURB
- 18. CONCRETE CURB
- 19. CONCRETE CURB
- 20. CONCRETE CURB
- 21. CONCRETE CURB
- 22. CONCRETE CURB
- 23. CONCRETE CURB
- 24. CONCRETE CURB
- 25. CONCRETE CURB
- 26. CONCRETE CURB
- 27. CONCRETE CURB
- 28. CONCRETE CURB
- 29. CONCRETE CURB
- 30. CONCRETE CURB
- 31. CONCRETE CURB
- 32. CONCRETE CURB
- 33. CONCRETE CURB
- 34. CONCRETE CURB
- 35. CONCRETE CURB
- 36. CONCRETE CURB
- 37. CONCRETE CURB
- 38. CONCRETE CURB
- 39. CONCRETE CURB
- 40. CONCRETE CURB
- 41. CONCRETE CURB
- 42. CONCRETE CURB
- 43. CONCRETE CURB
- 44. CONCRETE CURB
- 45. CONCRETE CURB
- 46. CONCRETE CURB
- 47. CONCRETE CURB
- 48. CONCRETE CURB
- 49. CONCRETE CURB
- 50. CONCRETE CURB
- 51. CONCRETE CURB
- 52. CONCRETE CURB
- 53. CONCRETE CURB
- 54. CONCRETE CURB
- 55. CONCRETE CURB
- 56. CONCRETE CURB
- 57. CONCRETE CURB
- 58. CONCRETE CURB
- 59. CONCRETE CURB
- 60. CONCRETE CURB
- 61. CONCRETE CURB
- 62. CONCRETE CURB
- 63. CONCRETE CURB
- 64. CONCRETE CURB
- 65. CONCRETE CURB
- 66. CONCRETE CURB
- 67. CONCRETE CURB
- 68. CONCRETE CURB
- 69. CONCRETE CURB
- 70. CONCRETE CURB
- 71. CONCRETE CURB
- 72. CONCRETE CURB
- 73. CONCRETE CURB
- 74. CONCRETE CURB
- 75. CONCRETE CURB
- 76. CONCRETE CURB
- 77. CONCRETE CURB
- 78. CONCRETE CURB
- 79. CONCRETE CURB
- 80. CONCRETE CURB
- 81. CONCRETE CURB
- 82. CONCRETE CURB
- 83. CONCRETE CURB
- 84. CONCRETE CURB
- 85. CONCRETE CURB
- 86. CONCRETE CURB
- 87. CONCRETE CURB
- 88. CONCRETE CURB
- 89. CONCRETE CURB
- 90. CONCRETE CURB
- 91. CONCRETE CURB
- 92. CONCRETE CURB
- 93. CONCRETE CURB
- 94. CONCRETE CURB
- 95. CONCRETE CURB
- 96. CONCRETE CURB
- 97. CONCRETE CURB
- 98. CONCRETE CURB
- 99. CONCRETE CURB
- 100. CONCRETE CURB

SCALE: 1/8" = 1'-0"

CONCORD PACIFIC GROUP INC.
1000 West Broadway
Suite 1000
Portland, OR 97201
TEL: 503.224.1100 FAX: 503.224.1101



CONCORD PACIFIC
Floor 10
Architect

IBI GROUP
1100 West Broadway
Suite 1000
Portland, OR 97201
TEL: 503.224.1100 FAX: 503.224.1101

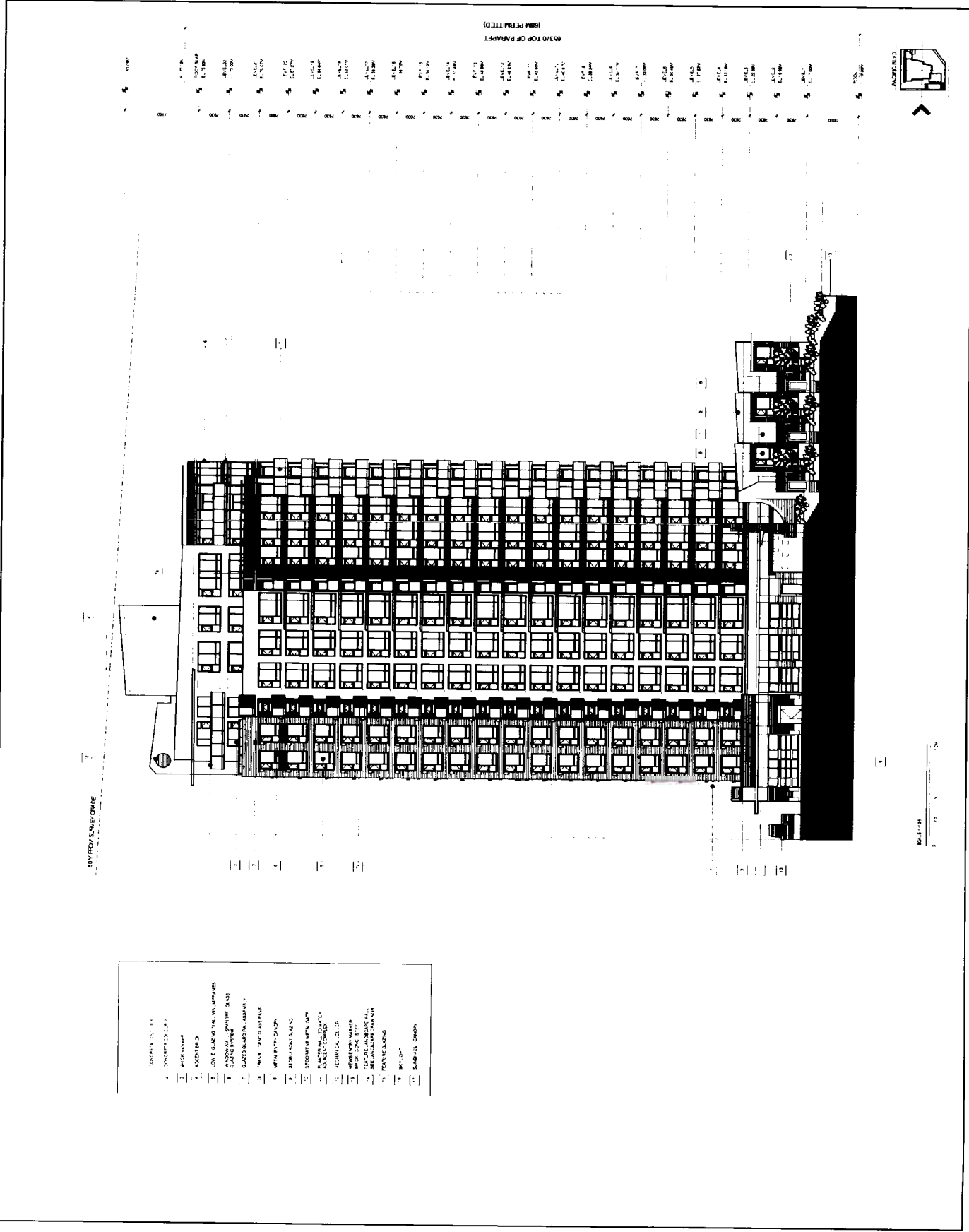
WEST ELEVATION

DATE: MAY 13, 2012
DRAWN BY: [Name]
CHECKED BY: [Name]
SCALE: AS SHOWN

A4.1

22 FLOOR

22 FLOOR PLAN
DATE: MAY 13, 2012
DRAWN BY: [Name]
CHECKED BY: [Name]
SCALE: AS SHOWN



ISSUE FOR PERMIT

REV	DATE	DESCRIPTION
REV 1	MAY 22, 2012	ISSUE FOR PERMIT
REV 2	MAY 18, 2012	ISSUE FOR PERMIT
REV 3	MARCH 27, 2012	ISSUE FOR PERMIT
REV 4	MARCH 13, 2012	ISSUE FOR PERMIT

- 1. CONCRETE FLOOR
- 2. CONCRETE SLAB
- 3. WALLS
- 4. FLOORING
- 5. CEILING
- 6. MECHANICAL
- 7. ELECTRICAL
- 8. PLUMBING
- 9. FINISHES
- 10. EXTERIOR
- 11. INTERIOR
- 12. LANDSCAPE
- 13. SIGNAGE
- 14. OTHER

ARCHITECT'S REVIEW

SCALE: 1/8" = 1'-0"

A4.2

22 FLOOR
The drawings are prepared under the supervision of the Licensed Professional Engineer, PE, whose name is shown on the title block. The drawings are not to be used for any other project without the express written consent of the engineer. The engineer is not responsible for any errors or omissions in the drawings or for any consequences arising from the use of the drawings.

PERMITTED SOUTH ELEVATION

DWG: MAY 03 2002 DWG BY: JVL/STB
SCALE: AS SHOWN
DATE: 05/03/02

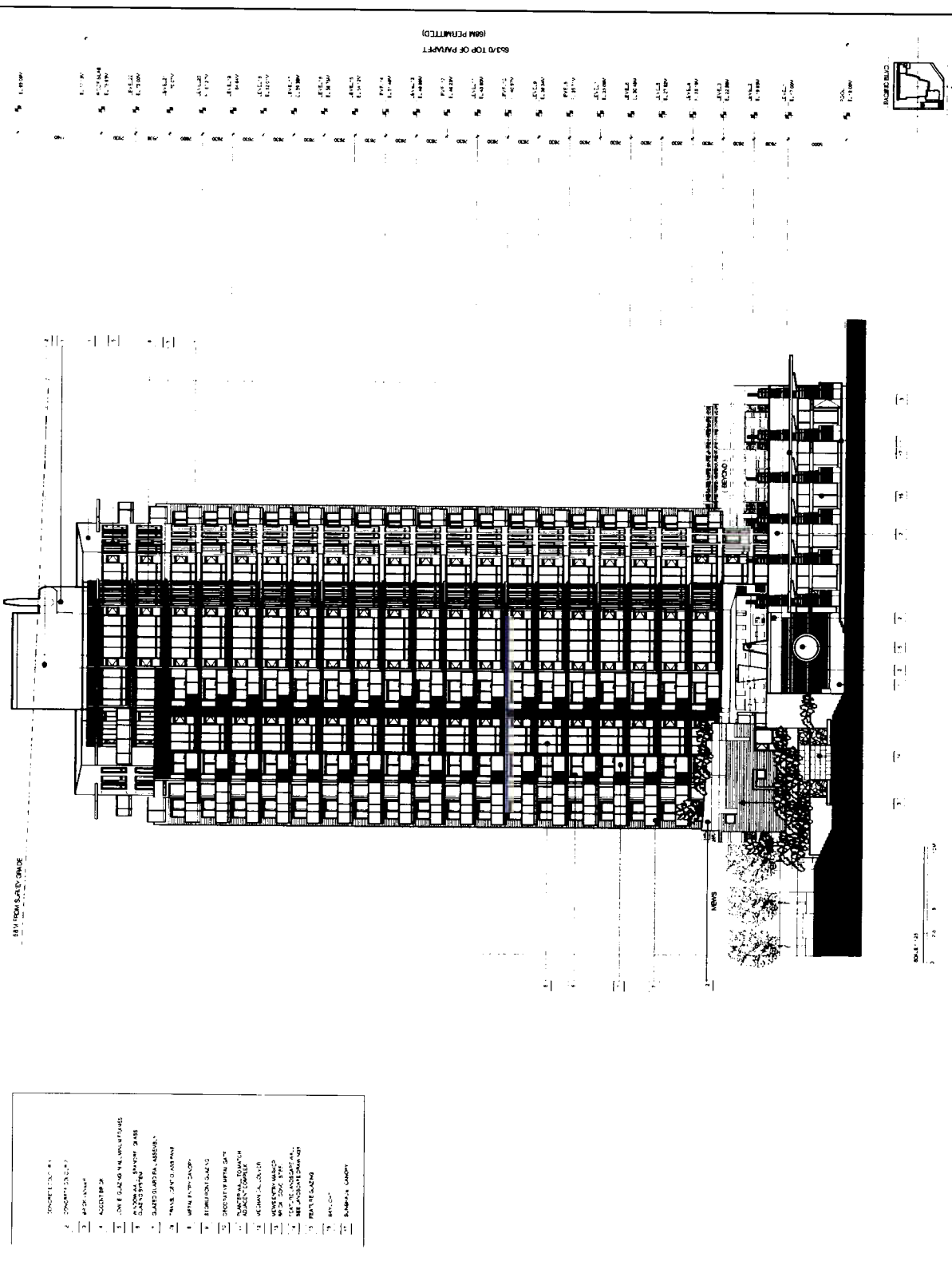


REV MAY 28 2002
REV MAY 18 2002
REV MARCH 27 2002
REV MARCH 13 2002
REVISION DATE

CONCORD PACIFIC GROUP, INC.
1100 West 10th Street
Suite 1000
Portland, OR 97204



CONCORD PACIFIC
PACIFIC PACIFIC



(SM FURTHER PERMITTED)
BASED TOP OF PART

- 1. SHEETING
- 2. CORRUGATED METAL
- 3. BRICK
- 4. CONCRETE
- 5. WOOD
- 6. GLASS
- 7. STEEL
- 8. INSULATION
- 9. FINISH
- 10. PAINT
- 11. ROOFING
- 12. MECHANICAL
- 13. ELECTRICAL
- 14. SANITARY
- 15. STRUCTURAL
- 16. CIVIL
- 17. LANDSCAPE
- 18. INTERIORS
- 19. EXTERIORS
- 20. SITEWORK
- 21. UTILITY
- 22. PAVING
- 23. SIGNAGE
- 24. FURNITURE
- 25. PLANTING
- 26. LIGHTING
- 27. SECURITY
- 28. ACCESSIBILITY
- 29. ENERGY EFFICIENT
- 30. GREEN BUILDING



CONCORD PACIFIC GROUP INC.
10000 14th Street, Suite 1000
San Francisco, CA 94133



CONCORD PACIFIC
INC., Member



IBI GROUP, INC.
10000 14th Street, Suite 1000
San Francisco, CA 94133

EAST ELEVATION

DATE: MAY 12, 2002
SCALE: 1/8" = 1'-0"
DRAWN BY: [Name]
CHECKED BY: [Name]

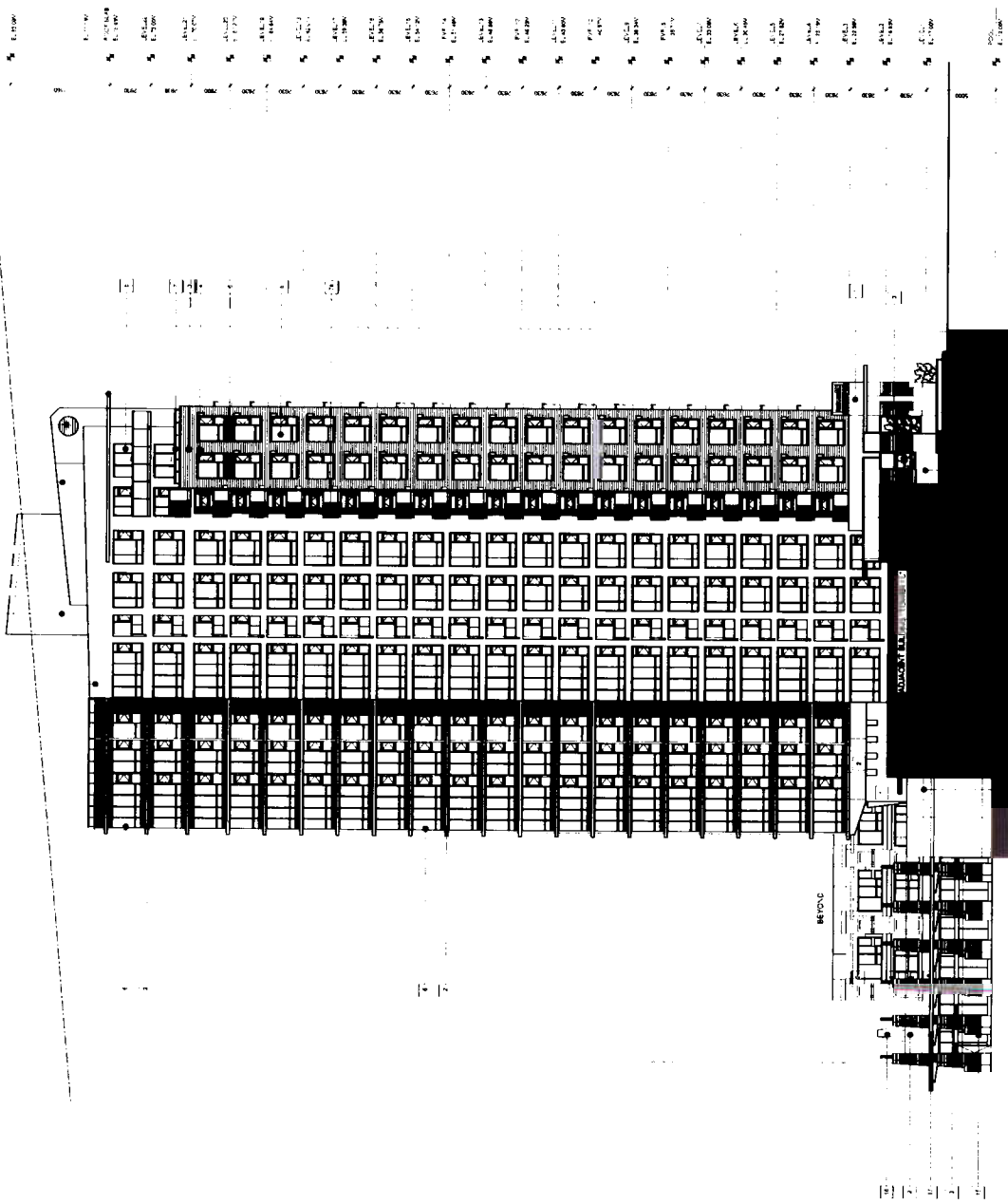
A4.3

22 E 100
PACIFIC BLDG.
10000 14th Street, Suite 1000
San Francisco, CA 94133

PACIFIC BLDG.

REVISIONS

5/20 TOP OF PARTIAL (88M PERMITTED)



- 1. CONCEPT PLAN
- 2. CONCEPT PLAN
- 3. ARCH. PLAN
- 4. ARCH. PLAN
- 5. ARCH. PLAN
- 6. ARCH. PLAN
- 7. ARCH. PLAN
- 8. ARCH. PLAN
- 9. ARCH. PLAN
- 10. ARCH. PLAN
- 11. ARCH. PLAN
- 12. ARCH. PLAN
- 13. ARCH. PLAN
- 14. ARCH. PLAN
- 15. ARCH. PLAN
- 16. ARCH. PLAN
- 17. ARCH. PLAN
- 18. ARCH. PLAN
- 19. ARCH. PLAN
- 20. ARCH. PLAN
- 21. ARCH. PLAN
- 22. ARCH. PLAN
- 23. ARCH. PLAN
- 24. ARCH. PLAN
- 25. ARCH. PLAN
- 26. ARCH. PLAN
- 27. ARCH. PLAN
- 28. ARCH. PLAN
- 29. ARCH. PLAN
- 30. ARCH. PLAN
- 31. ARCH. PLAN
- 32. ARCH. PLAN
- 33. ARCH. PLAN
- 34. ARCH. PLAN
- 35. ARCH. PLAN
- 36. ARCH. PLAN
- 37. ARCH. PLAN
- 38. ARCH. PLAN
- 39. ARCH. PLAN
- 40. ARCH. PLAN
- 41. ARCH. PLAN
- 42. ARCH. PLAN
- 43. ARCH. PLAN
- 44. ARCH. PLAN
- 45. ARCH. PLAN
- 46. ARCH. PLAN
- 47. ARCH. PLAN
- 48. ARCH. PLAN
- 49. ARCH. PLAN
- 50. ARCH. PLAN
- 51. ARCH. PLAN
- 52. ARCH. PLAN
- 53. ARCH. PLAN
- 54. ARCH. PLAN
- 55. ARCH. PLAN
- 56. ARCH. PLAN
- 57. ARCH. PLAN
- 58. ARCH. PLAN
- 59. ARCH. PLAN
- 60. ARCH. PLAN
- 61. ARCH. PLAN
- 62. ARCH. PLAN
- 63. ARCH. PLAN
- 64. ARCH. PLAN
- 65. ARCH. PLAN
- 66. ARCH. PLAN
- 67. ARCH. PLAN
- 68. ARCH. PLAN
- 69. ARCH. PLAN
- 70. ARCH. PLAN
- 71. ARCH. PLAN
- 72. ARCH. PLAN
- 73. ARCH. PLAN
- 74. ARCH. PLAN
- 75. ARCH. PLAN
- 76. ARCH. PLAN
- 77. ARCH. PLAN
- 78. ARCH. PLAN
- 79. ARCH. PLAN
- 80. ARCH. PLAN
- 81. ARCH. PLAN
- 82. ARCH. PLAN
- 83. ARCH. PLAN
- 84. ARCH. PLAN
- 85. ARCH. PLAN
- 86. ARCH. PLAN
- 87. ARCH. PLAN
- 88. ARCH. PLAN
- 89. ARCH. PLAN
- 90. ARCH. PLAN
- 91. ARCH. PLAN
- 92. ARCH. PLAN
- 93. ARCH. PLAN
- 94. ARCH. PLAN
- 95. ARCH. PLAN
- 96. ARCH. PLAN
- 97. ARCH. PLAN
- 98. ARCH. PLAN
- 99. ARCH. PLAN
- 100. ARCH. PLAN

SCALE: 1/8" = 1'-0"

